

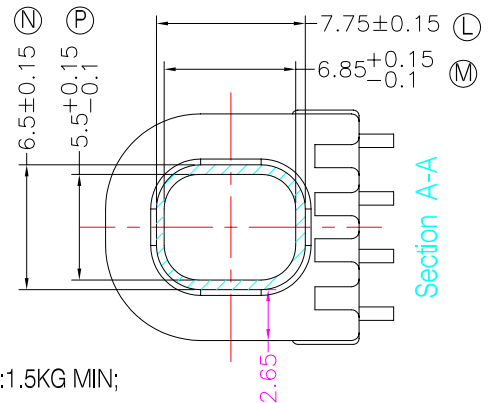
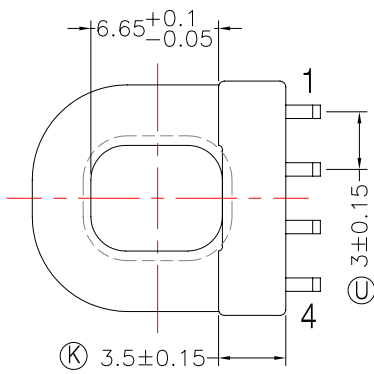
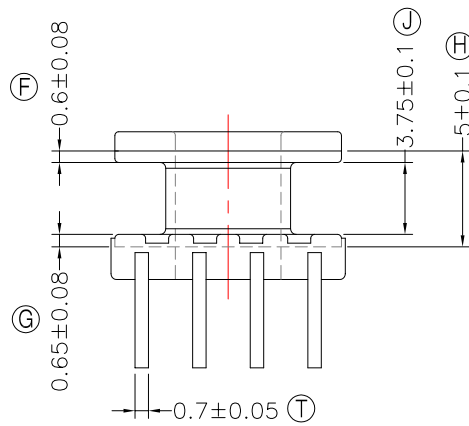
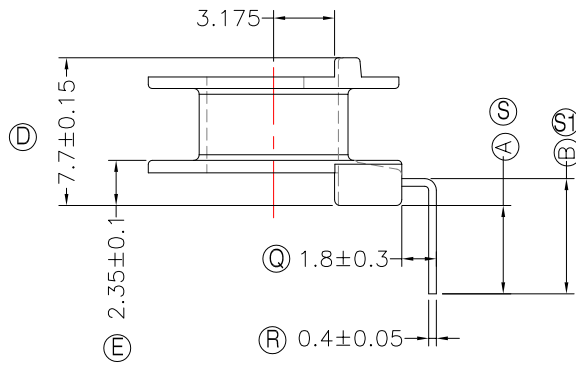
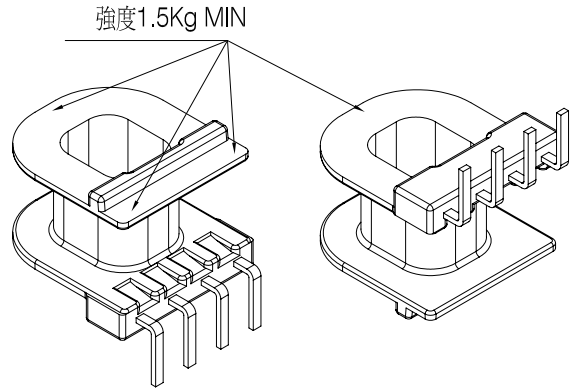
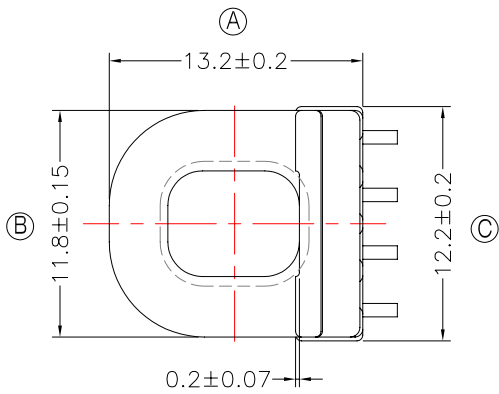


TRANSFORMER BOBBIN INDUSTRIAL CO.,LTD.

Tel : 86-769-88789999 Fax : 86-769-88789989
 http:// tbi-tw.com e-mail : tb6688@ms46.hinet.net

REVISIONS

| REV | SYM | DRAFTER | CHECKER | DATE |
|-----|-----|----------|---------|----------|
| 1 | | G.F.YANG | W.H.HSU | 06/03/15 |
| 2 | | | | |
| 3 | | | | |

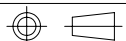


NOTE:

- 耐壓4.0Kv /1.5mA 60S;
- 焊錫溫度:450°±10° 3SEC
- 焊錫前拉力:1.0KG MIN,焊錫後拉力:1.5KG MIN;
- 任意一點強度須2.0kg MIN;(除以下測試點.A.處為1.5kg min).
- WINDING SPACE:3.75mm*2.65mm=9.94 mm²

DWG NO. ATP15-8.3-4P-THT-1C-11

| PART NO. | MATERIAL (BOBBIN) | MATERIAL (TERMINAL) | TERMINAL (PLATING) | PIN ALLOCATION | NOTE |
|--------------------|-------------------|---------------------|--------------------|---------------------------------|------|
| TBI-238-27131.1106 | PM-9630 | CP WIRE | Sn | ALL PIN A=4.6±0.3 B=6.0±0.3 | H |
| TBI-238-27131.1116 | PM-9630 | CP WIRE | Sn | ALL PIN A=3.0±0.3 B=4.4±0.3 | |
| TBI-238-27131.1126 | PM-9630 | CP WIRE | Sn | CUT PIN#2,3 A=4.6±0.3 B=6.0±0.3 | |
| TBI-238-27131.1136 | PM-9630 | CP WIRE | Sn | CUT PIN#2,3 A=3.5±0.2 B=4.9±0.3 | |



TOLERANCE: 0<L<=4:±0.1 4<L<=16:±0.2 16<L<=63:±0.3

UNIT : m / m

SCALE 1 : 1

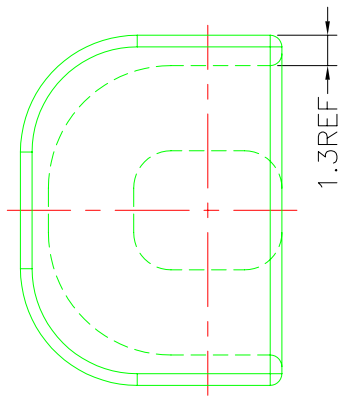
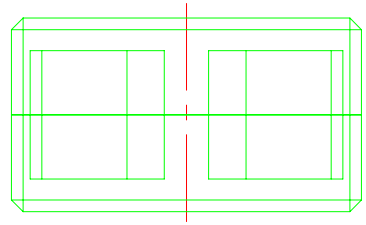
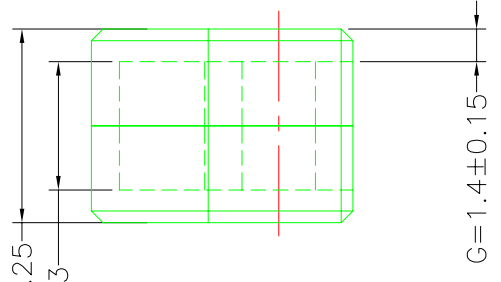
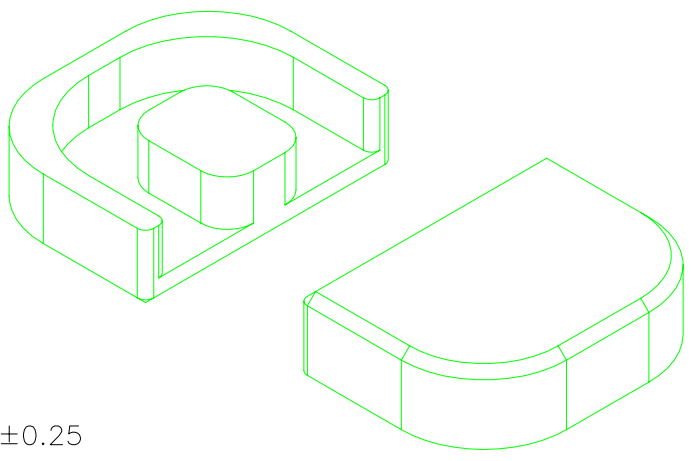
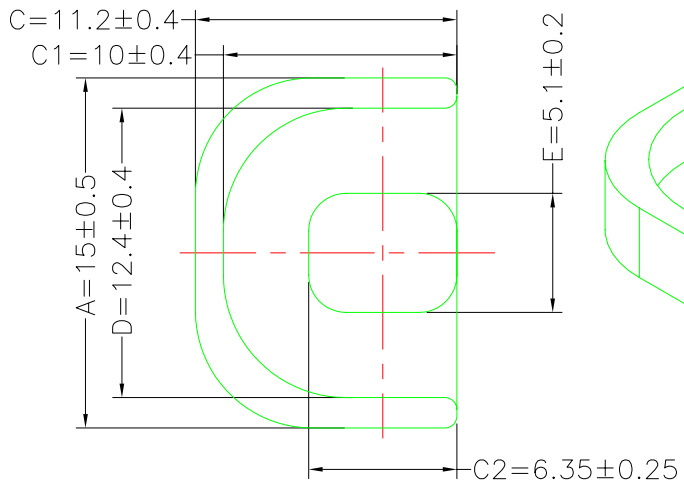
Finish: 1. PB wire Immersion Sn on terminal : Thickness:Sn plating,100%,5 μm (200 μ inches) min,Base nickel 0.625 μm (25 μ inches) min.
 2. CP wire Immersion Sn on terminal : Thickness:Sn plating,100%,5 μm (200 μ inches) min.
 3. Coplanarity deviation: 0.10 mm (0.004 inches) max.

REV 1

A-CORE
ELECTRICAL CO.

A-CORE JIANGMEN ELECTRONICS CO.,LTD
江門安磁電子有限公司
Tel : 86-750-3867791 Fax : 86-750-3867787

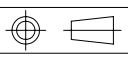
| REVISIONS | | | | |
|-----------|-----|----------|---------|----------|
| REV | SYM | DRAFTER | CHECKER | DATE |
| 1 | | G.F.YANG | W.H.HSU | 10/12/09 |
| 2 | | | | |
| 3 | | | | |



Core Set Parameters

$A_e=33.8\text{mm}^2$
 $L_e=27.6\text{mm}$
 $C1=0.817\text{mm}^{-1}$
 $V_e=932.88\text{mm}^3$

| | | | | | |
|-----------|-----------------|---------------------|--------------------|----------------|------|
| DWG NO. | ATP15/8.3 CORE | | | | |
| PART NO. | MATERIAL (CORE) | MATERIAL (TERMINAL) | TERMINAL (PLATING) | PIN ALLOCATION | NOTE |
| ATP15/8.3 | JPP-44A | | | | |
| ATP15/8.3 | JPP-95 | | | | |
| | | | | | |
| | | | | | |
| | | | | | |
| | | | | | |
| | | | | | |
| | | | | | |



TOLERANCE: 0<L<=4:±0.1 4<L<=16:±0.2 16<L<=63:±0.3

UNIT : m / m

SCALE 1 : 1

REV 1

A-COREA-CORE JIANGMEN ELECTRONICS CO.,LTD
江門安磁電子有限公司**TBI**TRANSFORMER BOBBIN
INDUSTRIAL CO.,LTD.

ELECTRICAL CO. Tel : 86-750-3867791 Fax : 86-750-3867787

Tel : 86-769-88789999 Fax : 86-769-88789989

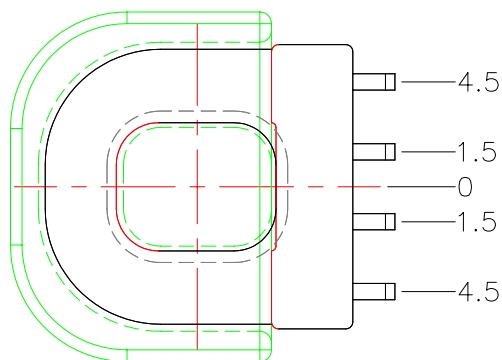
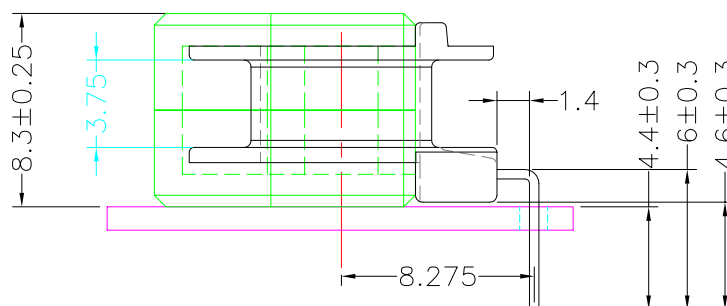
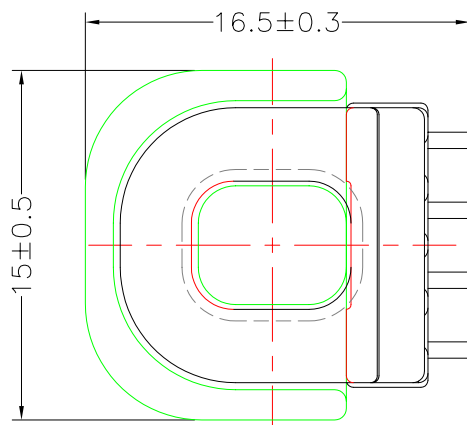
e-mail : sales@acore-ferrite.com

http:// tbi-tw.com e-mail : tb6688@ms46.hinet.net

REVISIONS

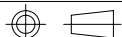
| REV | SYM | DRAFTER | CHECKER | DATE |
|-----|-----|----------|---------|----------|
| △1 | | G.F.YANG | W.H.HSU | 06/03/15 |
| △2 | | | | |
| △3 | | | | |

TOP



BOTTOM

| ITEM | PART NO. | MATERIAL | DWG NO. | Core Set Parameters |
|--------|--------------------|----------|------------------------|---|
| CORE | ATP15/8.3 | JPP-44A | | $A_e=33.8\text{mm}^2$ $L_e=27.6\text{mm}$ $C1=0.817\text{mm}^{-1}$ $V_e=932.88\text{mm}^3$ |
| CORE | ATP15/8.3 | JPP-95 | | |
| BOBBIN | TBI-238-27131.11XX | | ATP15-8.3-4P-THT-1C-11 | |
| | | | | |



UNIT : m/m

SCALE 1 : 1

REV

1