

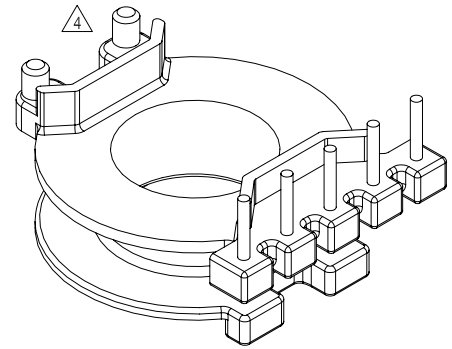
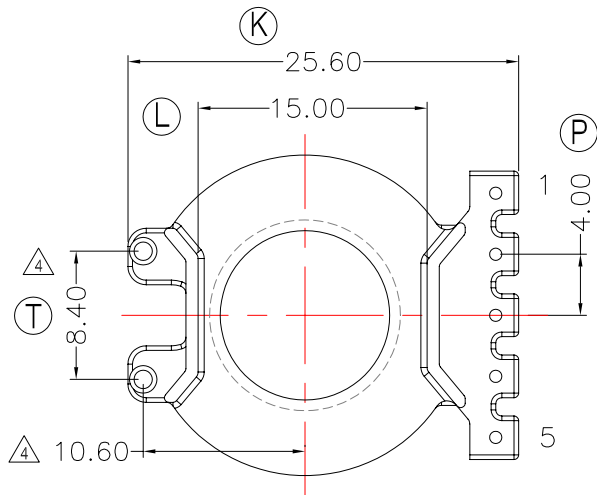
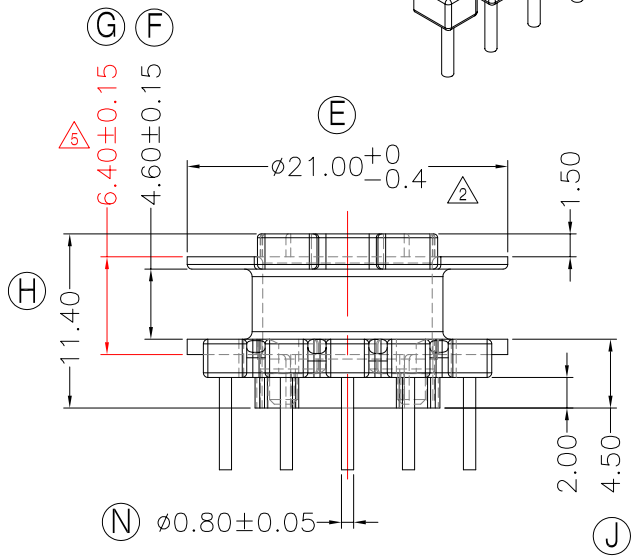
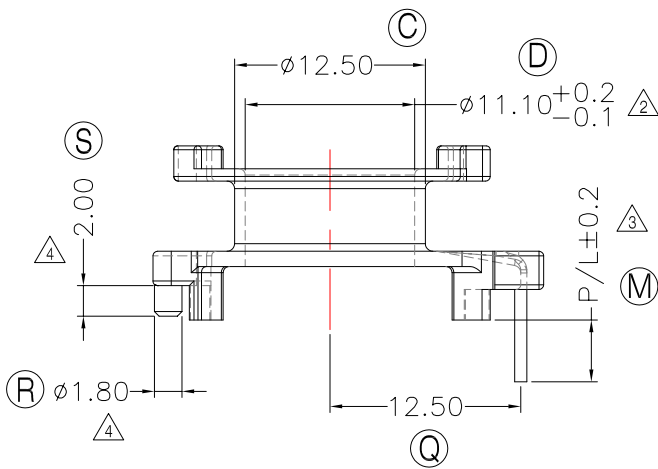
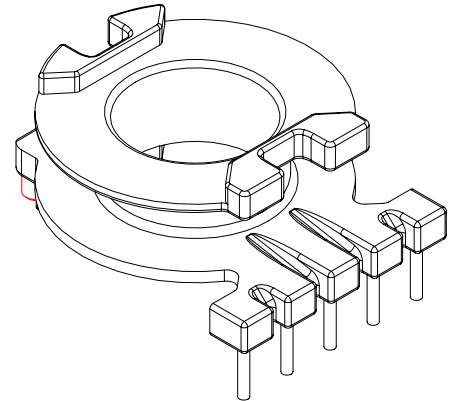
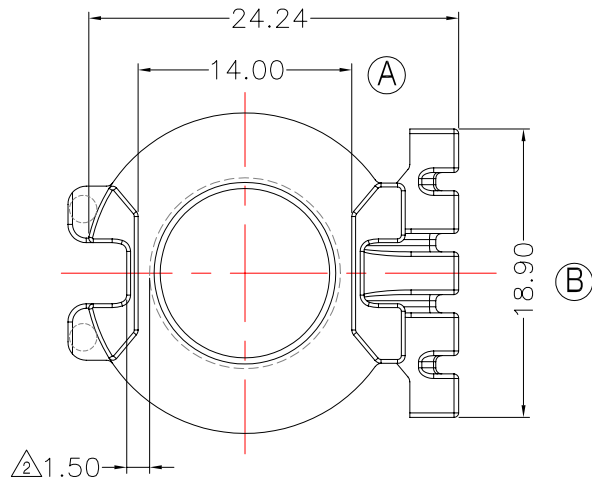


TRANSFORMER BOBBIN
INDUSTRIAL CO.,LTD.

Tel : 86-769-88789999 Fax : 86-769-88789999
http:// tbi-tw.com e-mail : tb6688@ms46.hinet.net

REVISIONS

REV	SYM	DRAFTER	CHECKER	DATE
3		X.X.YUAN	G.F.YANG	02/03/12
4		X.H.GU	G.F.YANG	04/07/12
5		X.H.GU	G.F.YANG	07/09/12



NOTE:

1. 任一點的強度為1.8kgMIN
2. 焊前拉力:1.0kg Min; 焊後拉力1.5kg Min

DWG NO. RM10-12.9G-5P-TH-C0-12

PART NO.	MATERIAL (BOBBIN)	MATERIAL (TERMINAL)	TERMINAL (PLATING)	PIN ALLOCATION	NOTE
TBI-208-04301.1206	PM-9820	CP WIRE	Sn	ALL PIN P/L=2.7±0.2	S
TBI-208-04301.1216	PM-9820	CP WIRE	Sn	ALL PIN P/L=4.5±0.2	暫無刀模 H
TBI-208-04301.1226	PM-9820	CP WIRE	Sn	ALL PIN P/L=5.0±0.2	

TOLERANCE: $0 < L \leq 4 : \pm 0.1$ $4 < L \leq 16 : \pm 0.2$ $16 < L \leq 63 : \pm 0.3$

UNIT : m / m

SCALE 1 : 1

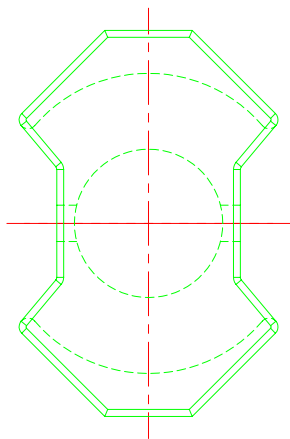
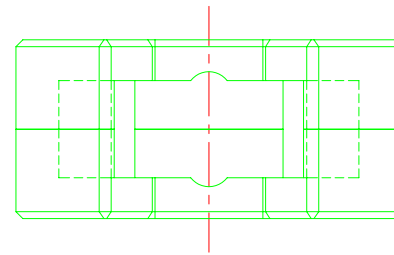
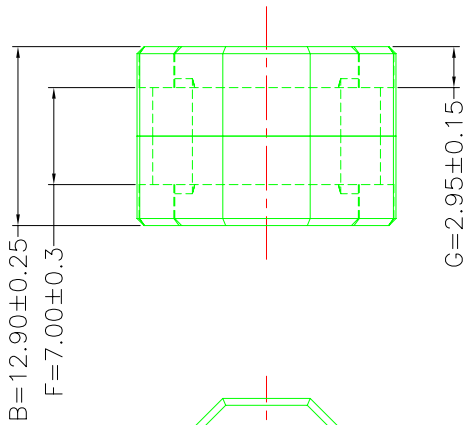
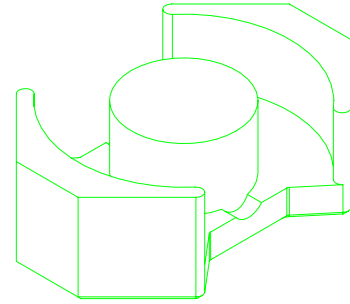
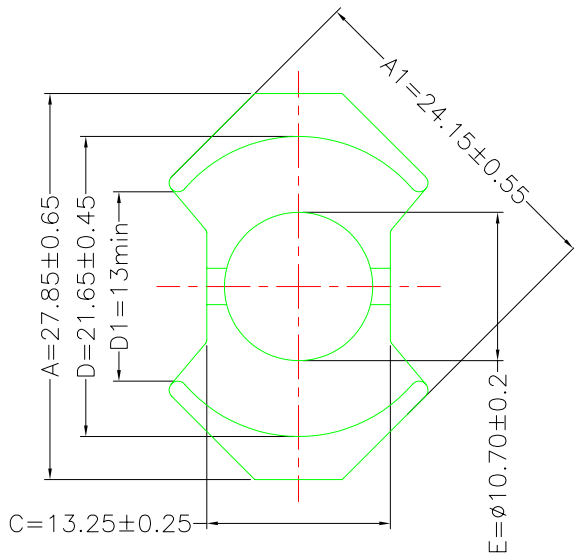
Finish: 1. PB wire Immersion Sn on terminal : Thickness:Sn plating,100,5 μ m (200 μ inches) min,Base nickel 0.625 μ m (25 μ inches) min.
2. CP wire Immersion Sn on terminal : Thickness:Sn plating,100,5 μ m (200 μ inches) min.
3. Coplanarity deviation: 0.10 mm (0.004 inches) max.

REV 5

A-CORE
ELECTRICAL CO.

A-CORE JIANGMEN ELECTRONICS CO.,LTD
 江门安磁电子有限公司
 Tel: 86-750-3867791 Fax : 86-750-3867787

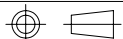
REVISIONS				
REV	SYM	DRAFTER	CHECKER	DATE
①		X.H.GU	G.F.YANG	06/04/11
②				
③				



Core Set Parameters

$A_e=98.3\text{mm}^2$
 $L_e=38.2\text{mm}$
 $C_1=0.389\text{mm}^{-1}$
 $V_e=3755.06\text{mm}^3$

DWG NO.	RM10/12.9G CORE				
PART NO.	MATERIAL (BOBBIN)	MATERIAL (TERMINAL)	TERMINAL (PLATING)	PIN ALLOCATION	NOTE
RM10/12.9G	JPP-44A				
RM10/12.9G	JPP-95				



Finish:

UNIT : m/m

SCALE 1 : 1

REV 1

A-CORE

A-CORE JIANGMEN ELECTRONICS CO.,LTD
江門安磁電子有限公司

TBI

TRANSFORMER BOBBIN
INDUSTRIAL CO.,LTD.

ELECTRICAL CO. Tel : 86-750-3867791 Fax : 86-750-3867787

Tel : 86-769-88789999 Fax : 86-769-88789989

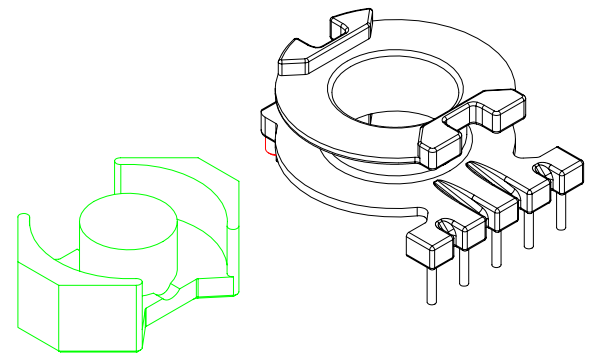
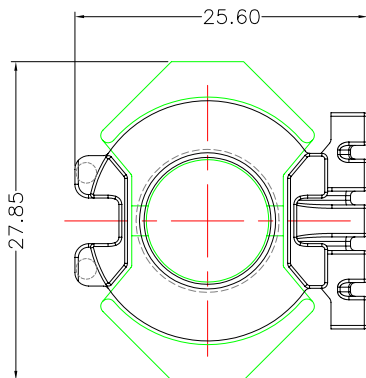
e-mail : sales@acore-ferrite.com

http:// tbi-tw.com e-mail : tb6688@ms46.hinet.net

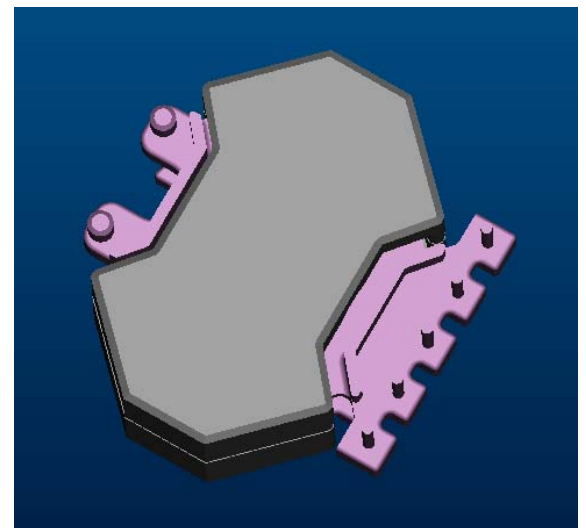
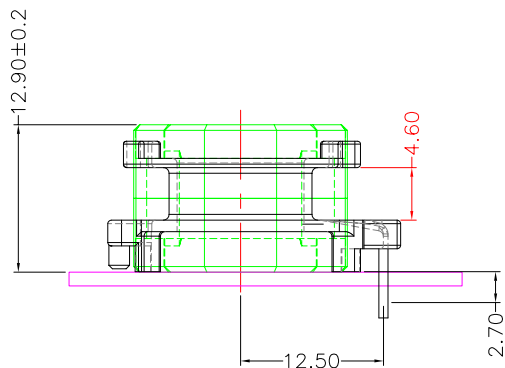
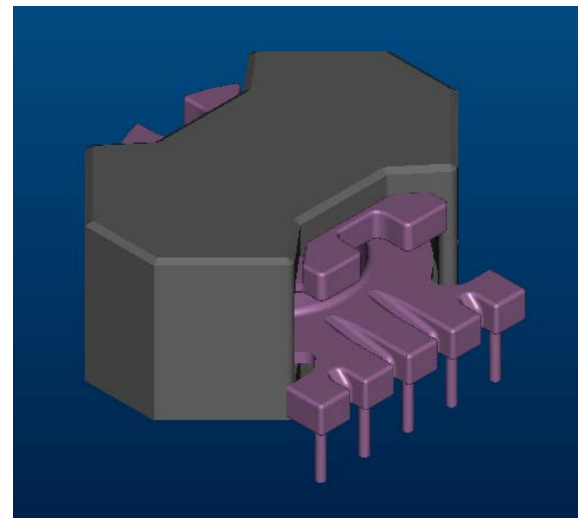
REVISIONS

REV	SYM	DRAFTER	CHECKER	DATE
△3		X.X.YUAN	G.F.YANG	02/03/12
△4		X.H.GU	G.F.YANG	04/07/12
△5		X.H.GU	G.F.YANG	07/09/12

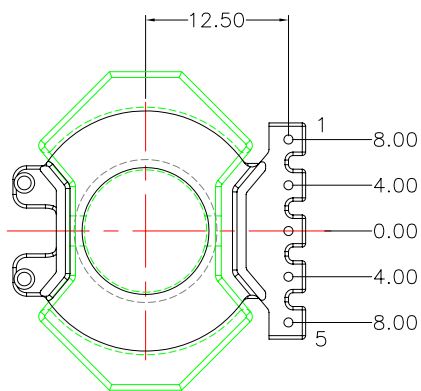
TOP



TOP

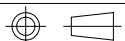


BOTTOM



BOTTOM

ITEM	PART NO.	MATERIAL	DWG NO.	Core Set Parameters
CORE	RM10/12.9G	JPP-44A		$A_e=98.3\text{mm}^2$ $L_e=37.9\text{mm}$ $C_1=0.386\text{mm}^{-1}$ $V_e=3725.57\text{mm}^3$
CORE	RM10/12.9G	JPP-95		
BOBBIN	TBI-208-04301.12XX		RM10-12.9G-5P-TH-C0-12	



UNIT : m / m

SCALE 1 : 1

REV 5