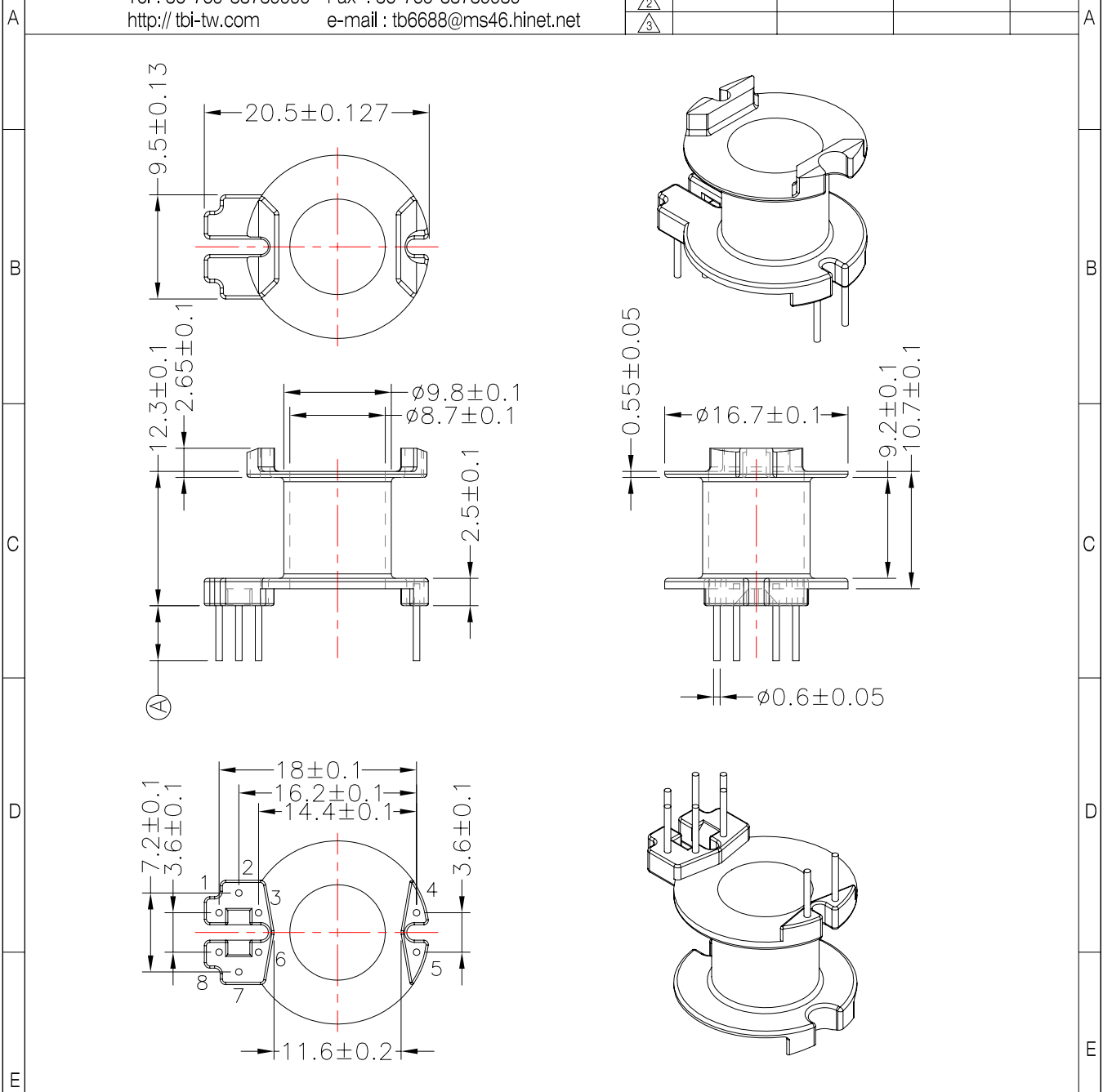




**TRANSFORMER BOBBIN
INDUSTRIAL CO.,LTD.**

Tel : 86-769-88789999 Fax : 86-769-88789989
http:// tbi-tw.com e-mail : tb6688@ms46.hinet.net

REVISIONS				
REV	SYM	DRAFTER	CHECKER	DATE
1		YAN.TANG	G.F.YANG	09/19/09
2				
3				



DWG NO.	RM8-8P-TH-A0-11				
PART NO.	MATERIAL (BOBBIN)	MATERIAL (TERMINAL)	TERMINAL (PLATING)	PIN ALLOCATION	NOTE
TBI-208-05101.1106	PM-9630	CP WIRE	Sn	CUT PIN #4,5, (A)=5.0±0.3	
TBI-208-05101.1116	PM-9630	CP WIRE	Sn	CUT PIN #2,4,5,7, (A)=5.0±0.3	H
TBI-208-05101.1126	PM-9630	CP WIRE	Sn	ALL PIN, (A)=5.0±0.3	
TBI-208-05101.1136	PM-9630	CP WIRE	Sn	CUT PIN #1,6, (A)=5.0±0.3	
TBI-208-05101.1146	PM-9630	CP WIRE	Sn	CUT PIN #1,6, (A)=6.0±0.3	
F TBI-208-05101.1156	PM-9630	CP WIRE	Sn	CUT PIN #3,4,6, (A)=5.0±0.3	F
TBI-208-05101.1166	PM-9630	CP WIRE	Sn	CUT PIN #3,4,6, (A)=6.0±0.3	
TBI-208-05101.1176	PM-9630	CP WIRE	Sn	CUT PIN #3,5,6, (A)=5.0±0.3	
TBI-208-05101.1186	PM-9630	CP WIRE	Sn	CUT PIN #3,5,6, (A)=6.5±0.3	
TBI-208-05101.1196	PM-9630	CP WIRE	Sn	CUT PIN #4,5 (A)=6.0±0.3	
TBI-208-05101.11A6	PM-9630	CP WIRE	Sn	CUT PIN #1,2,7,8 (A)=5.0±0.3	
TBI-208-05101.11B6	PM-9630	CP WIRE	Sn	ALL PIN, (A)=7.0±0.3	排距公差±0.3,PIN距公差±0.2
TBI-208-05101.11C6	PM-9630	CP WIRE	Sn	CUT PIN #4,5,6 (A)=5.0±0.3	
TOLERANCE: .X±0.15 .XX±0.10 .XXX±0.05				UNIT : m / m	SCALE 1 : 1

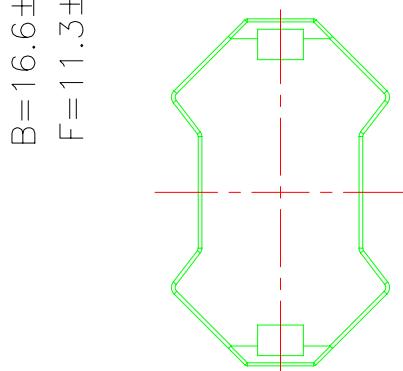
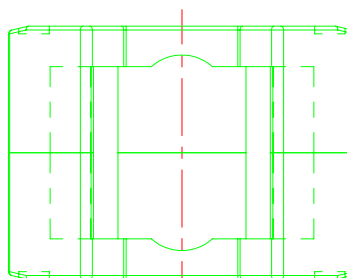
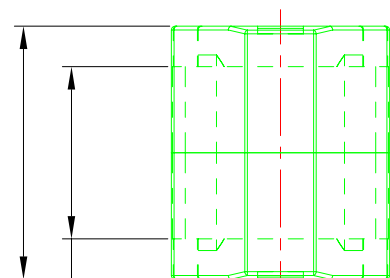
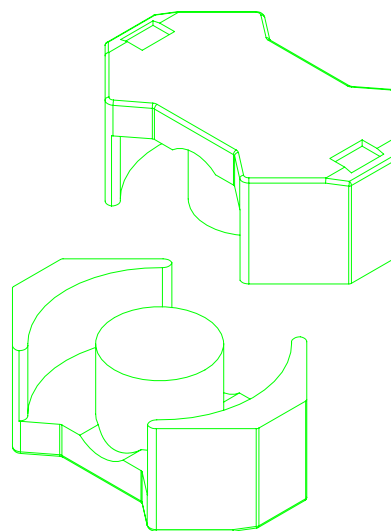
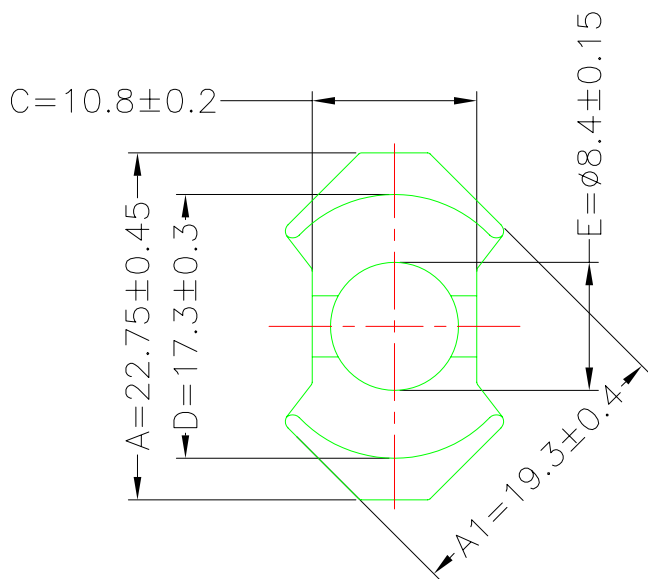
Finish: 1. PB wire Immersion Sn on terminal : Thickness:Sn plating,100,5 μm (200 μ inches) min,Base nickel 0.625 μm (25 μ inches) min.
2. CP WIRE Immersion Sn on terminal : Thickness:Sn plating,100,5 μm (200 μ inches) min.
3. Coplanarity deviation: 0.10 mm (0.004 inches) max.

REV	1
-----	---

A-CORE
ELECTRICAL CO.

A-CORE JIANGMEN ELECTRONICS CO.,LTD
 江门安磁电子有限公司
 Tel: 86-750-3867791 Fax : 86-750-3867787

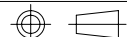
REVISIONS				
REV	SYM	DRAFTER	CHECKER	DATE
1		YAN.TANG	G.F.YANG	09/19/09
2				
3				



Core Set Parameters

$A1$ (Limbs) = 65.1mm^2
 $A2$ (Backwall) = 64.8mm^2
 $A3$ (Center post) = 55.4mm^2
 Ae = 64.0mm^2
 Le = 38.0mm
 $C1$ = 0.594mm^{-1}
 Ve = 2432mm^3

DWG NO.	RM8A-16.6-CORE				
PART NO.	MATERIAL (BOBBIN)	MATERIAL (TERMINAL)	TERMINAL (PLATING)	PIN ALLOCATION	NOTE
RM8A-16.6	JPP-44A				
RM8A-16.6	JPP-95				



Finish:

UNIT : m/m

SCALE 1 : 1

REV 1

A-CORE

A-CORE JIANGMEN ELECTRONICS CO.,LTD
江門安磁電子有限公司

TBI

TRANSFORMER BOBBIN
INDUSTRIAL CO.,LTD.

ELECTRICAL CO. Tel : 86-750-3867791 Fax : 86-750-3867787

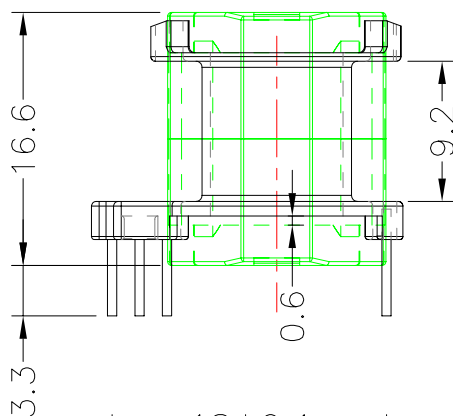
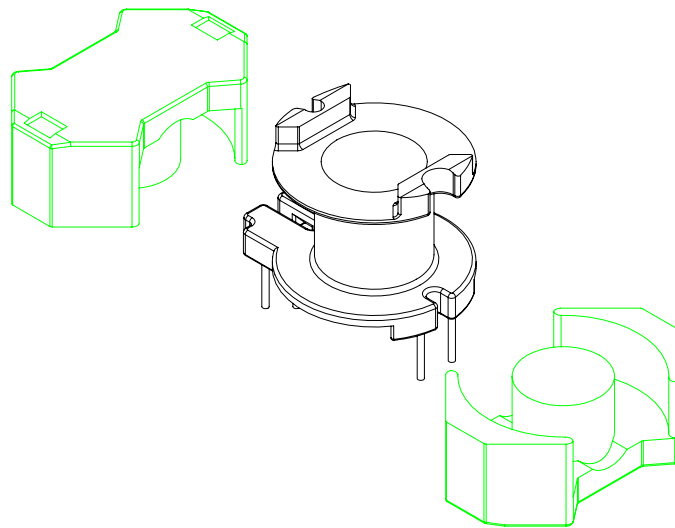
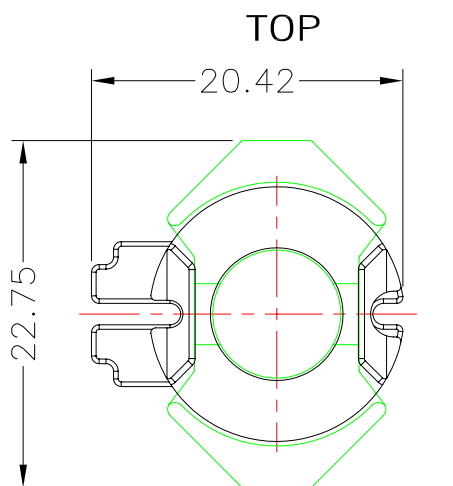
Tel : 86-769-88789999 Fax : 86-769-88789989

e-mail : sales@acore-ferrite.com

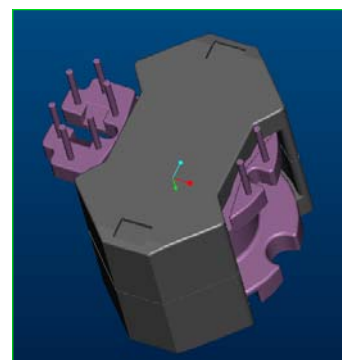
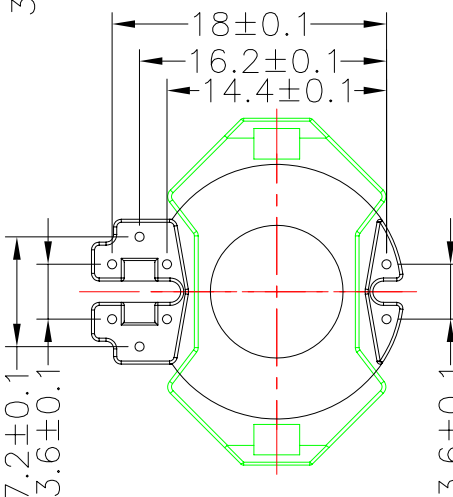
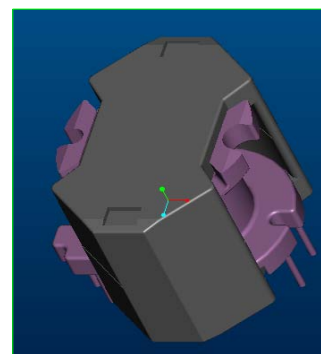
http:// tbi-tw.com e-mail : tb6688@ms46.hinet.net

REVISIONS

REV	SYM	DRAFTER	CHECKER	DATE
△1		YAN.TANG	G.F.YANG	09/19/09
△2				
△3				



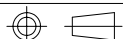
TOP



BOTTOM

BOTTOM

ITEM	PART NO.	MATERIAL	DWG NO.	Core Set Parameters
CORE	RM8A	JPP-44A		$A_e=64.0\text{mm}^2$ $L_e=38.0\text{mm}$ $C_1=0.594\text{mm}^{-1}$ $V_e=2432\text{mm}^3$
CORE	RM8A	JPP-95		
BOBBIN	TBI-208-05101.12XX		RM8-8P-TH-A0-11	



UNIT : m/m

SCALE 1:1

REV 1