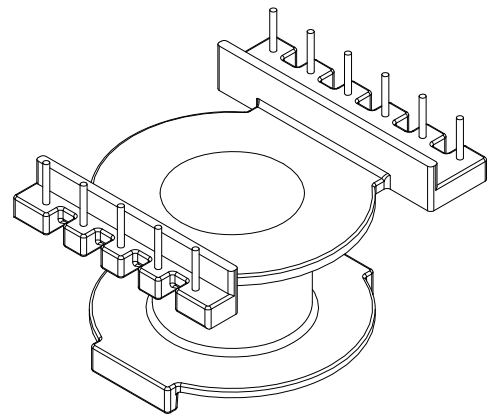
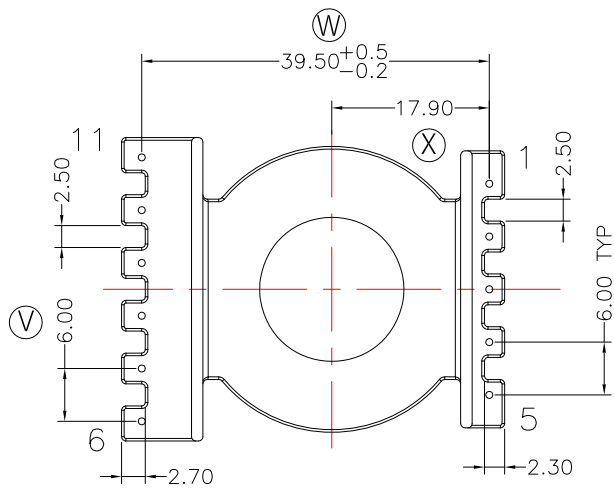
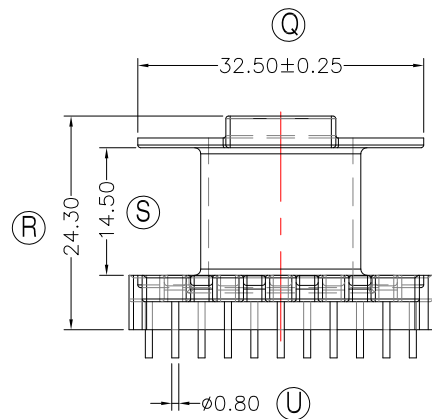
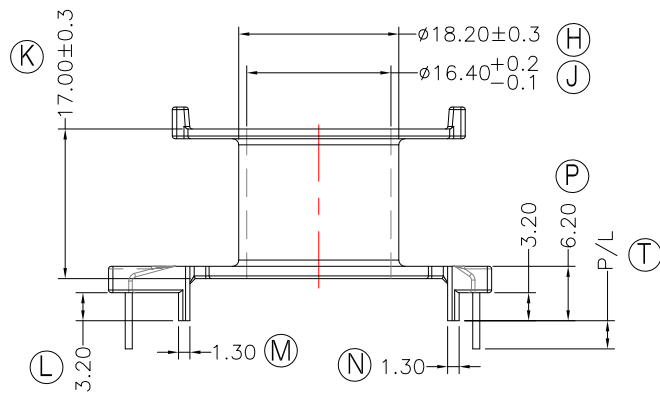
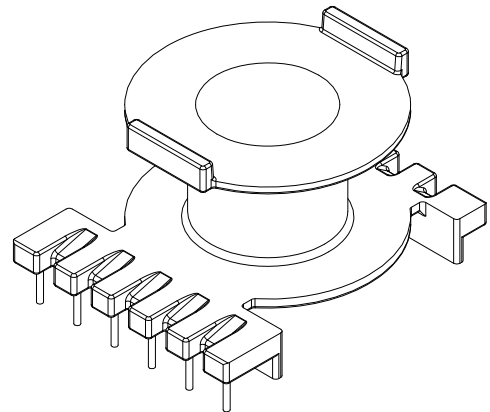
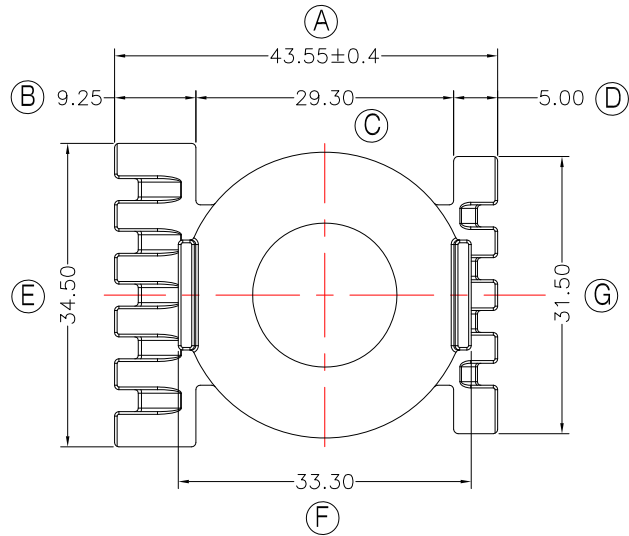




**TRANSFORMER BOBBIN
INDUSTRIAL CO.,LTD.**

Tel : 86-769-88789999 Fax : 86-769-88789999
http:// tbi-tw.com e-mail : tb6688@ms46.hinet.net

REVISIONS				
REV	SYM	DRAFTER	CHECKER	DATE
1		M.WANG	G.F.YANG	12/07/16
2				
3				



DWG NO.	CC40-25-11P-TH-A9-11				
PART NO.	MATERIAL (BOBBIN)	MATERIAL (TERMINAL)	TERMINAL (PLATING)	PIN ALLOCATION	NOTE
TBI-239-01191.1106	PM-9630	CP WIRE	Sn	ALL PIN P/L=4.0±0.3	S
TBI-239-01191.1116	PM-9630	CP WIRE	Sn	ALL PIN P/L=3.2±0.3	H
TBI-239-01191.1126	PM-9630	CP WIRE	Sn	CUT PIN#6,8,9,10,11 P/L=4.0±0.2	
TBI-239-01191.1136	PM-9630	CP WIRE	Sn	CUT PIN 1,2,3,9,11 P/L=3.2±0.3	
TBI-239-01191.1146	PM-9630	CP WIRE	Sn	CUT PIN 1,2,3,9,11 P/L=3.8±0.2	
	TOLERANCE: 0<L<=4:±0.1 4<L<=16:±0.2 16<L<=50:±0.3 PIN PITCH±0.2			UNIT : m / m	SCALE 1 : 1

Finish: 1. PB wire Immersion Sn on terminal : Thickness:Sn plating,100,5 μ m (200 μ inches) min,Base nickel 0.625 μ m (25 μ inches) min.
2. CP wire Immersion Sn on terminal : Thickness:Sn plating,100,5 μ m (200 μ inches) min.
3. Coplanarity deviation: 0.10 mm (0.004 inches) max.

REV	1
-----	---