

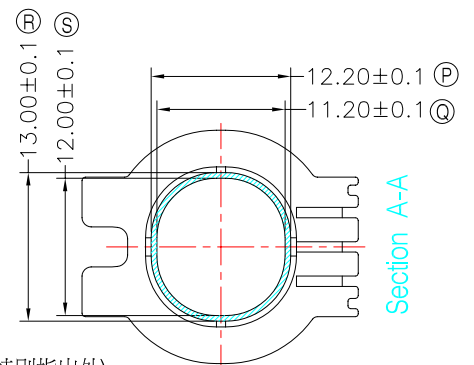
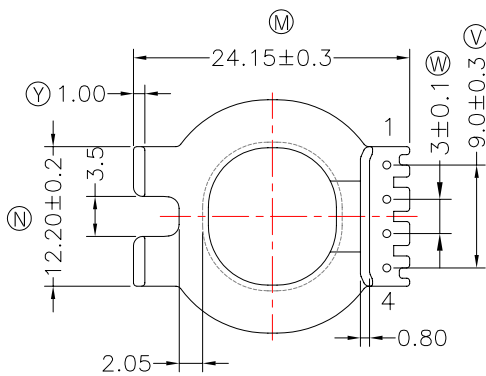
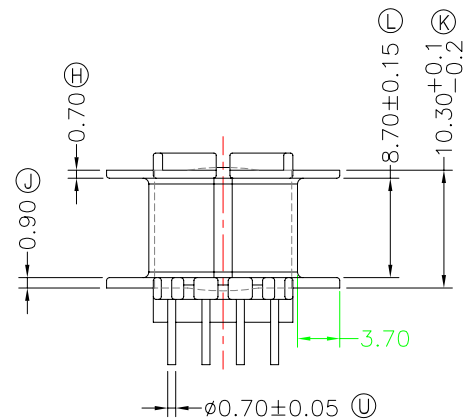
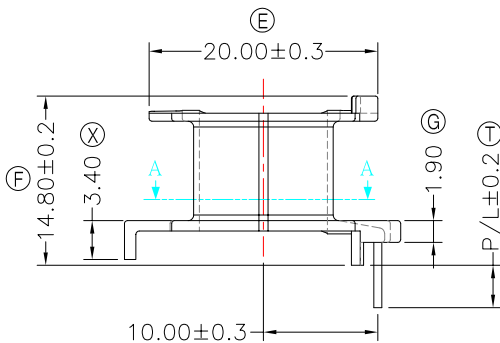
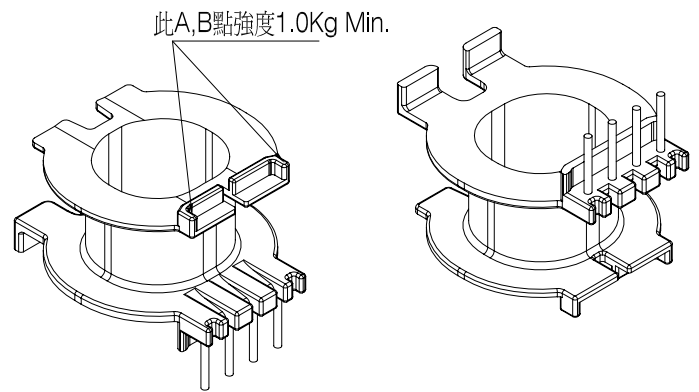
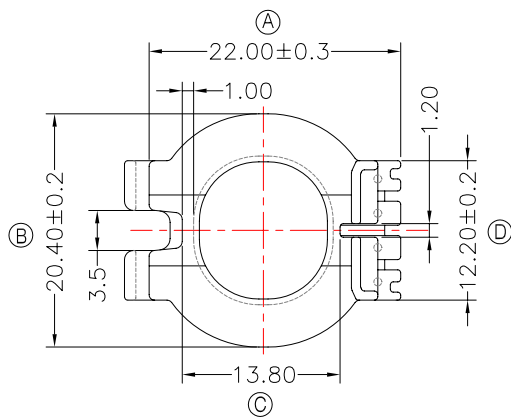


TRANSFORMER BOBBIN  
INDUSTRIAL CO.,LTD.

Tel : 86-769-88789999 Fax : 86-769-88789989  
http:// tbi-tw.com e-mail : tb6688@ms46.hinet.net

REVISIONS

| REV | SYM | DRAFTER | CHECKER  | DATE     |
|-----|-----|---------|----------|----------|
| 1   |     | X.H.GU  | G.F.YANG | 06/13/15 |
| 2   |     |         |          |          |
| 3   |     |         |          |          |



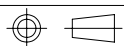
NOTE:

- 1.耐壓4.0Kv /1.5mA 60S;
- 2.焊錫溫度:450°±10° 3SEC;
- 3.任意一點強度須1.5kg MIN;(除了特別指出外)
- 4.焊錫前拉力:1.0KG MIN,焊錫後拉力:1.5KG MIN;
- 5.WINDING SPACE:8.7mm\*3.7mm=32.19mm<sup>2</sup>

與TBI-238-01611.11XX(ATQ24-15.8A-1P-CASE-F1-11)配套使用;

DWG NO. ATQ24-15.8A-4P-TH-F0-11

| PART NO.           | MATERIAL (BOBBIN) | MATERIAL (TERMINAL) | TERMINAL (PLATING) | PIN ALLOCATION        | NOTE |
|--------------------|-------------------|---------------------|--------------------|-----------------------|------|
| TBI-238-01601.1106 | PM-9630           | CP WIRE             | Sn                 | ALL PIN P/L=5.0±0.2   | S    |
| TBI-238-01601.1116 | PM-9630           | CP WIRE             | Sn                 | ALL PIN P/L=4.0±0.2   | H    |
| TBI-238-01601.1126 | PM-9630           | CP WIRE             | Sn                 | NO PIN #2 P/L=5.0±0.2 |      |



TOLERANCE: 0<L<=4:±0.1 4<L<=16:±0.2 16<L<=63:±0.3

UNIT : m / m

SCALE 1 : 1

Finish: 1. PB wire Immersion Sn on terminal : Thickness:Sn plating,100%,5 μm (200 μ inches) min,Base nickel 0.625 μm (25 μ inches) min.  
2. CP wire Immersion Sn on terminal : Thickness:Sn plating,100%,5 μm (200 μ inches) min.  
3. Coplanarity deviation: 0.10 mm (0.004 inches) max.

REV 1

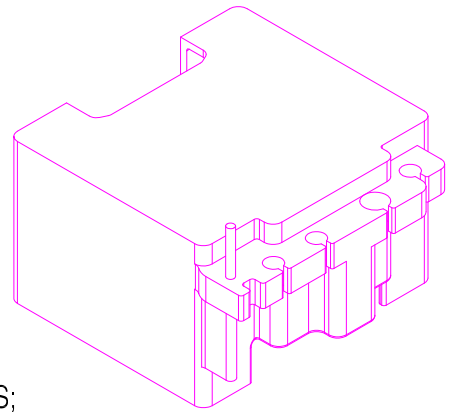
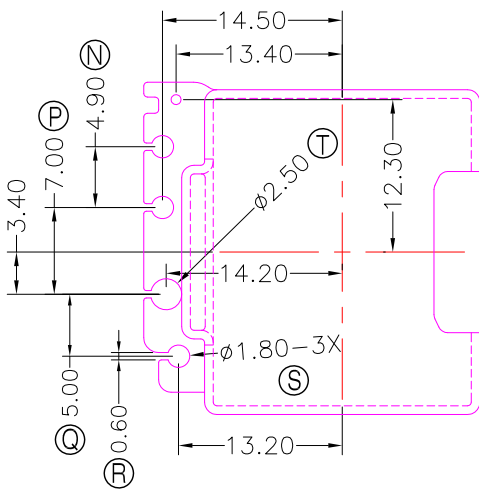
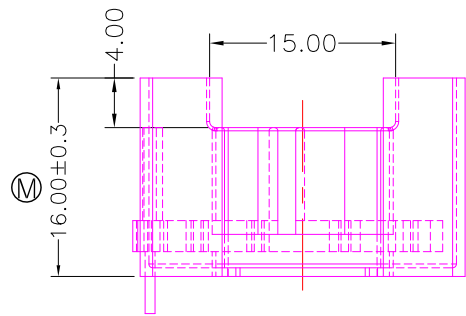
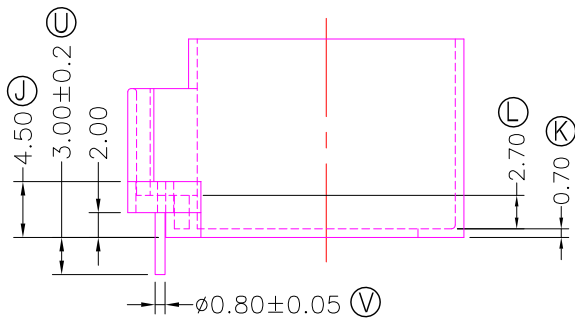
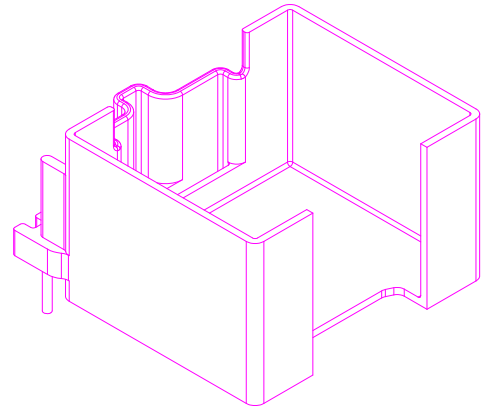
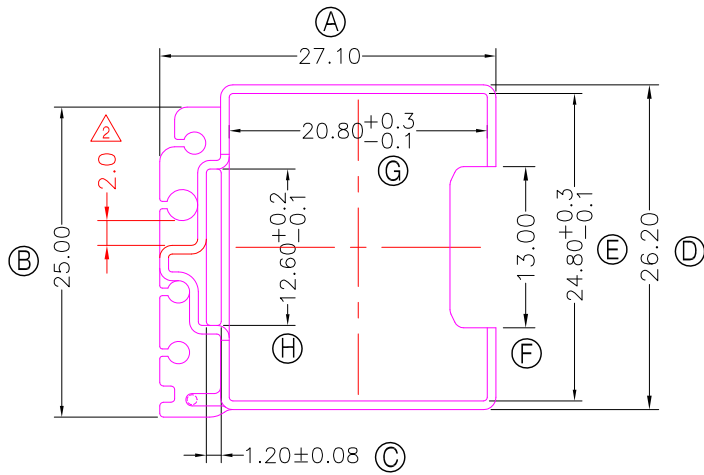


**TRANSFORMER BOBBIN  
INDUSTRIAL CO.,LTD.**

Tel : 86-769-88789999 Fax : 86-769-88789989  
http:// tbi-tw.com e-mail : tb6688@ms46.hinet.net

REVISIONS

| REV | SYM | DRAFTER | CHECKER  | DATE     |
|-----|-----|---------|----------|----------|
| △1  |     | X.H.GU  | G.F.YANG | 11/02/15 |
| △2  |     | X.H.GU  | G.F.YANG | 04/18/22 |
| △3  |     |         |          |          |



NOTE:

- 耐壓4.0Kv /1.5mA 60S;
  - 焊錫溫度:450°±10° 3SEC;
  - 任意一點強度須1.5kg MIN;
  - 焊錫前拉力:1.0KG MIN,焊錫後拉力:1.5KG MIN;
- 與TBI-238-01601.11XX(ATQ24-15.8A-4P-TH-F0-11)配套使用;

DWG NO. ATQ24-15.8A-1P-CASE-F1-11

| PART NO.           | MATERIAL (BOBBIN) | MATERIAL (TERMINAL) | TERMINAL (PLATING) | PIN ALLOCATION | NOTE |
|--------------------|-------------------|---------------------|--------------------|----------------|------|
| TBI-238-01611.1106 | PM-9630           | CP WIRE             | Sn                 | ALL PIN        | S    |
|                    |                   |                     |                    |                | H    |

TOLERANCE: 0<L<=4:±0.1 4<L<=16:±0.2 16<L<=63:±0.3 UNIT : m / m SCALE 1 : 1

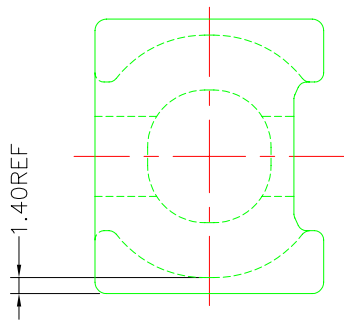
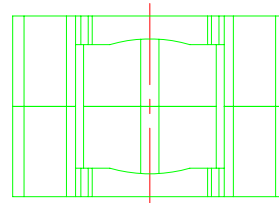
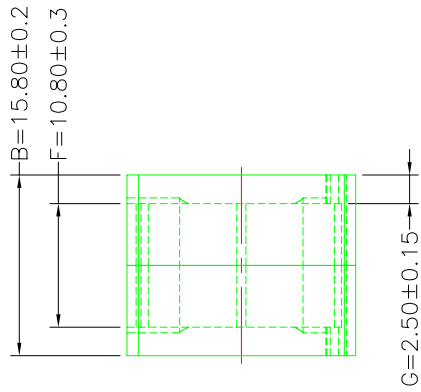
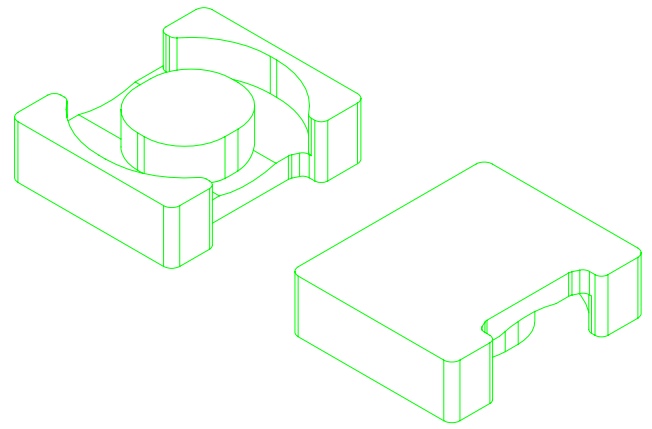
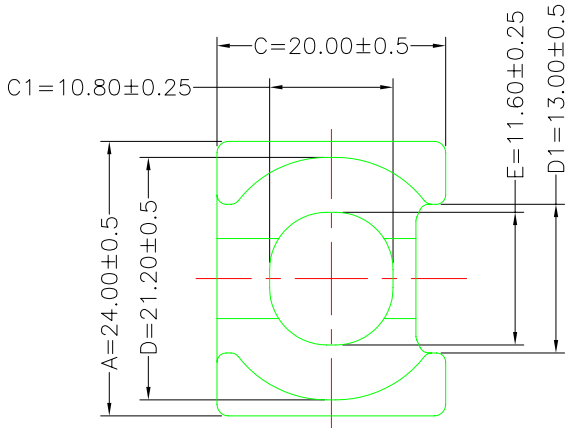
Finish: 1. PB wire Immersion Sn on terminal : Thickness:Sn plating,100%,5 μm (200 μ inches) min,Base nickel 0.625 μm (25 μ inches) min.  
2. CP wire Immersion Sn on terminal : Thickness:Sn plating,100%,5 μm (200 μ inches) min.  
3. Coplanarity deviation: 0.10 mm (0.004 inches) max.

REV 2

**A-CORE**  
ELECTRICAL CO.

A-CORE JIANGMEN ELECTRONICS CO.,LTD  
江門安磁電子有限公司  
Tel : 86-750-3867791 Fax : 86-750-3867787

| REVISIONS |     |         |          |          |
|-----------|-----|---------|----------|----------|
| REV       | SYM | DRAFTER | CHECKER  | DATE     |
| 1         |     | X.H.GU  | G.F.YANG | 05/14/15 |
| 2         |     |         |          |          |
| 3         |     |         |          |          |



### Core Set Parameters

$A_e = 106 \text{mm}^2$   
 $L_e = ? \text{mm}$   
 $C_1 = ? \text{mm}^{-1}$   
 $V_e = ? \text{mm}^3$

|             |                   |                     |                    |                |      |
|-------------|-------------------|---------------------|--------------------|----------------|------|
| DWG NO.     | ATQ24/15.8A CORE  |                     |                    |                |      |
| PART NO.    | MATERIAL (BOBBIN) | MATERIAL (TERMINAL) | TERMINAL (PLATING) | PIN ALLOCATION | NOTE |
| ATQ24/15.8A | JPP-44A           |                     |                    |                |      |
| ATQ24/15.8A | JPP-95            |                     |                    |                |      |
|             |                   |                     |                    |                |      |
|             |                   |                     |                    |                |      |
|             |                   |                     |                    |                |      |

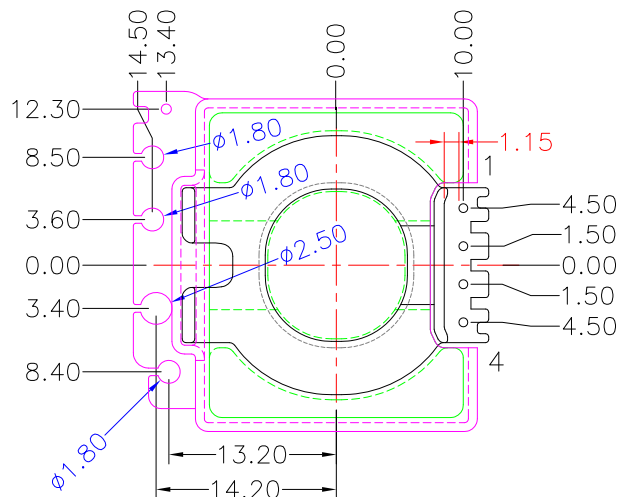
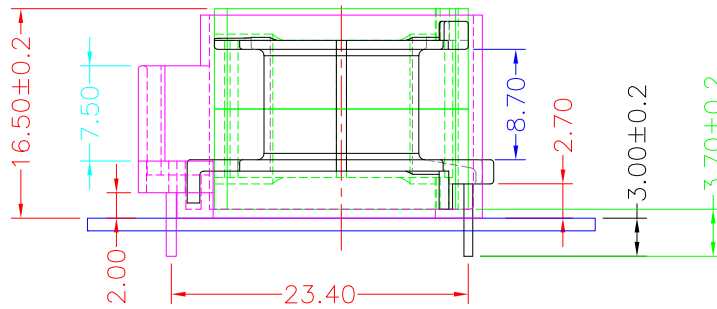
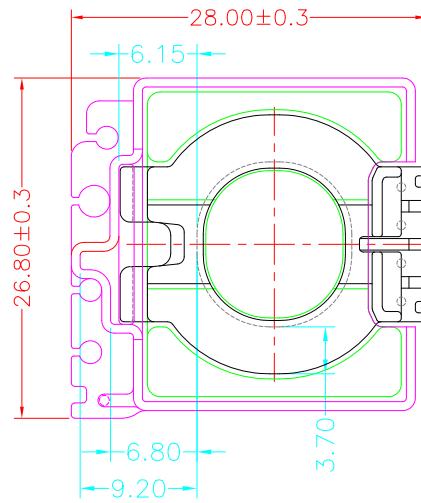
|         |   |              |             |   |
|---------|---|--------------|-------------|---|
| Finish: | TOLERANCE: 0<L<=4:±0.1 4<L<=16:±0.2 16<L<=63:±0.3 | UNIT : m / m | SCALE 1 : 1 |   |
|         |   |              | REV         | 1 |

**A-CORE** A-CORE JIANGMEN ELECTRONICS CO.,LTD  
 江门安磁电子有限公司  
 ELECTRICAL CO. Tel : 86-750-3867791 Fax : 86-750-3867787  
 e-mail : sales@acore-ferrite.com

**TBI** TRANSFORMER BOBBIN INDUSTRIAL CO.,LTD.  
 Tel : 86-769-88789999 Fax : 86-769-88789989  
 http:// tbi-tw.com e-mail : tb6688@ms46.hinet.net

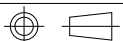
| REVISIONS |     |         |          |          |
|-----------|-----|---------|----------|----------|
| REV       | SYM | DRAFTER | CHECKER  | DATE     |
| △1        |     | X.H.GU  | G.F.YANG | 06/13/15 |
| △2        |     |         |          |          |
| △3        |     |         |          |          |

**TOP**



**BOTTOM**

| ITEM   | PART NO.           | MATERIAL | DWG NO.                   | Core Set Parameters |
|--------|--------------------|----------|---------------------------|---------------------|
| CORE   | ATQ24/15.8A        | JPP-44A  |                           |                     |
| CORE   | ATQ24/15.8A        | JPP-95   |                           |                     |
| BOBBIN | TBI-238-01601.11XX |          | ATQ24-15.8A-4P-TH-F0-11   |                     |
| CASE   | TBI-238-01611.11XX |          | ATQ24-15.8A-1P-CASE-F1-11 |                     |
|        |                    |          |                           |                     |



UNIT : m / m

SCALE 1 : 1

REV

1