

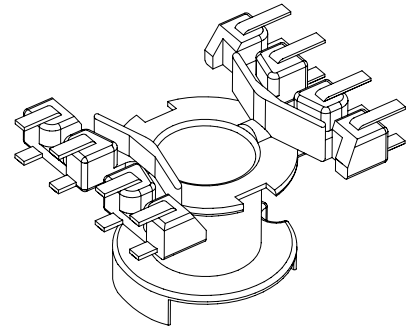
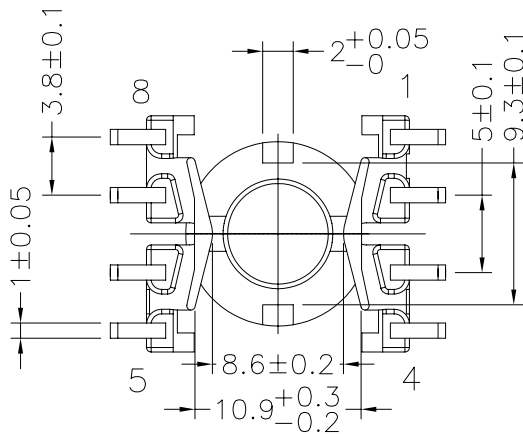
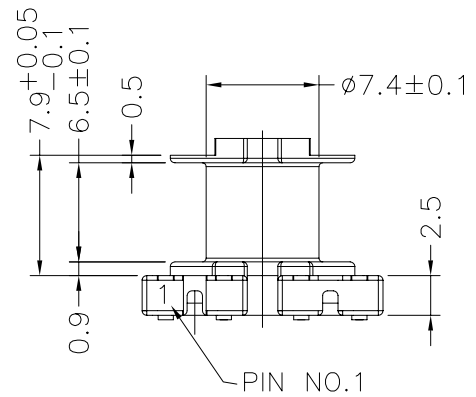
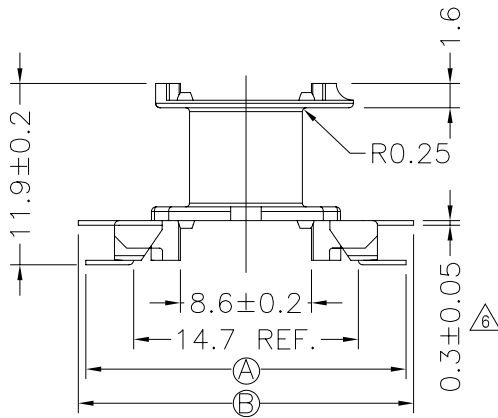
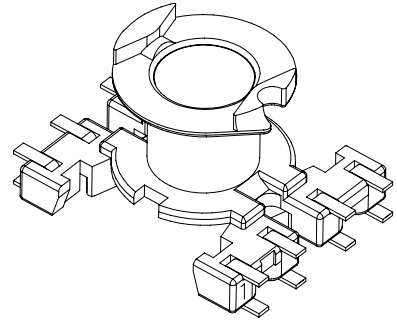
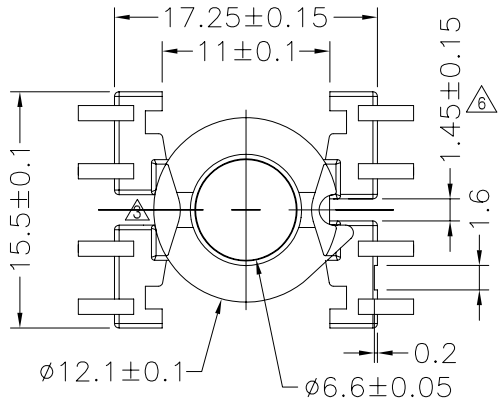


**TRANSFORMER BOBBIN  
INDUSTRIAL CO.,LTD.**

Tel : 86-769-88789999 Fax : 86-769-88789999  
http:// tbi-tw.com e-mail : tb6688@ms46.hinet.net

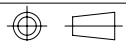
REVISIONS

REV	SYM	DRAFTER	CHECKER	DATE
△4		T.S.LII	W.H.HSU	07/25/06
△5		Y.G.HSU	W.H.HSU	01/12/07
△6		Y.G.HSU	W.H.HSU	05/07/07



DWG NO. RM6-8P-J-3.8-D-13

PART NO.	MATERIAL (BOBBIN)	MATERIAL (TERMINAL)	TERMINAL (PLATING)	PIN ALLOCATION	NOTE
TBI-108-02041.1303	PM-9630JT	P.B C5191 △5	Sn	ALL PIN A = 18±0.3 B = 21±0.5	52GRM6SMD8P1
TBI-108-02041.1306	PM-9630JT	CP WIRE	Sn	ALL PIN A = 18±0.3 B = 21±0.5	
TBI-108-02041.1316	PM-9630JT	CP WIRE	Sn	ALL PIN A = 20.9±0.3 B = 20.9±0.3	



TOLERANCE: .X±0.15 .XX±0.10 .XXX±0.05

UNIT : m / m

SCALE 2 : 1

Finish: 1. Pb wire Immersion Sn on terminal : Thickness:Sn plating,100,5 μm (200 μ inches) min,Base nickel 0.625 μm (25 μ inches) min.  
2. CP wire Immersion Sn on terminal : Thickness:Sn plating,100,5 μm (200 μ inches) min.  
3. Coplanarity deviation: 0.10 mm (0.004 inches) max.

REV 6