

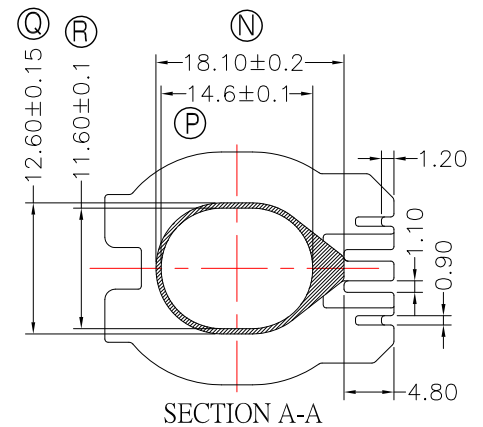
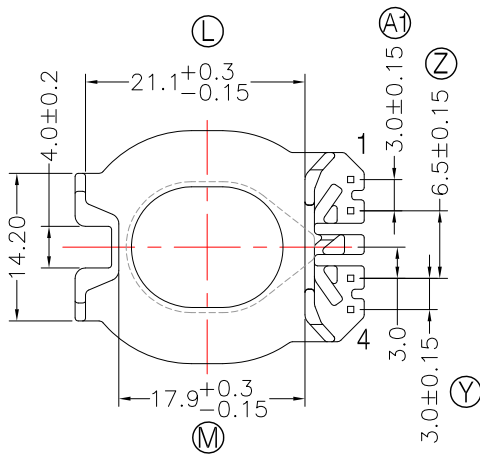
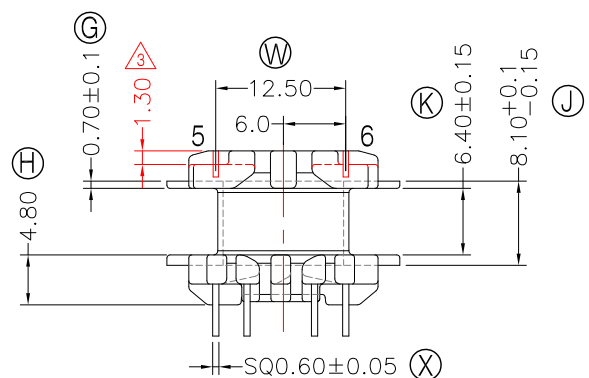
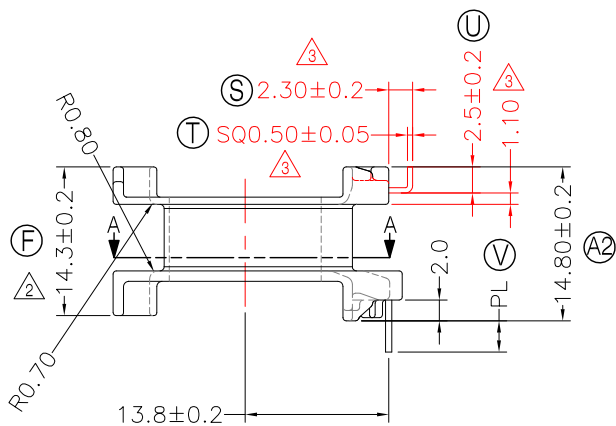
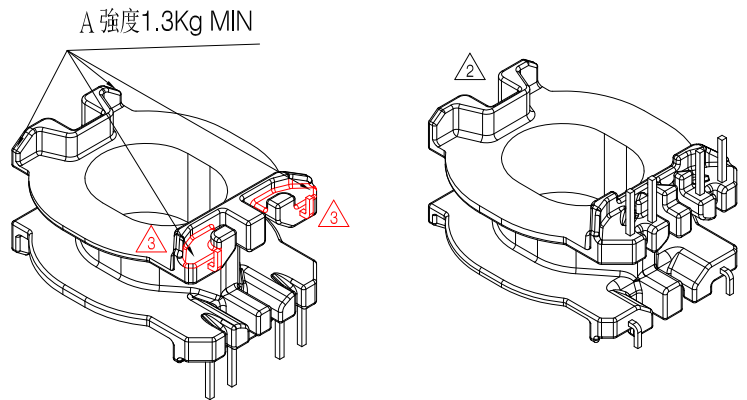
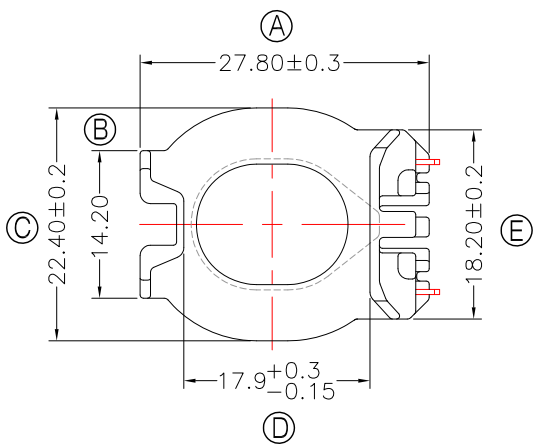


TRANSFORMER BOBBIN  
INDUSTRIAL CO.,LTD.

Tel : 86-769-88789999 Fax : 86-769-88789989  
http:// tbi-tw.com e-mail : tb6688@ms46.hinet.net

REVISIONS

REV	SYM	DRAFTER	CHECKER	DATE
①		X.H.GU	G.F.YANG	04/21/21
②		X.H.GU	G.F.YANG	06/03/21
③		X.H.GU	G.F.YANG	10/06/21



NOTE:

- 1.耐壓4.0Kv /1.5mA 60S;
- 2.焊錫溫度:450°±10° 3SEC
- 3.Winding Space=6.4\*4.9=31.36mm<sup>2</sup>
- 4.焊錫前拉力:1.0KG MIN,焊錫後拉力:1.5KG MIN;
- 5.任一點的強度為1.8kg MIN;其中頂部A處為1.3kg MIN;

DWG NO. ATQ27-14.4-6P-TH-B8-11

PART NO.	MATERIAL (BOBBIN)	MATERIAL (TERMINAL)	TERMINAL (PLATING)	PIN ALLOCATION	NOTE
TBI-238-48281.1106	PM-9630	CP WIRE	Sn	ALL PIN PL=5.5±0.2	S
TBI-238-48281.1116	PM-9630	CP WIRE	Sn	ALL PIN PL=4.5±0.2	H

TOLERANCE: 0<L<=4:±0.1 4<L<=16:±0.2 16<L<=63:±0.3

UNIT : m / m

SCALE 1 : 1

Finish: 1. PB wire Immersion Sn on terminal : Thickness:Sn plating,100%,5 μm (200 μ inches) min,Base nickel 0.625 μm (25 μ inches) min.  
2. CP wire Immersion Sn on terminal : Thickness:Sn plating,100%,5 μm (200 μ inches) min.  
3. Coplanarity deviation: 0.10 mm (0.004 inches) max.

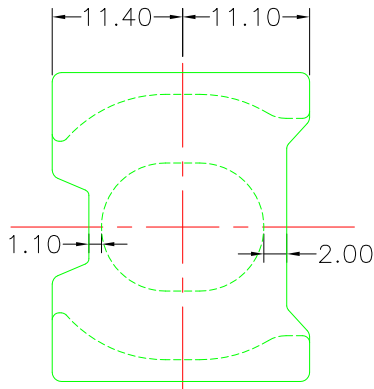
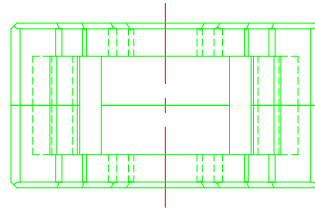
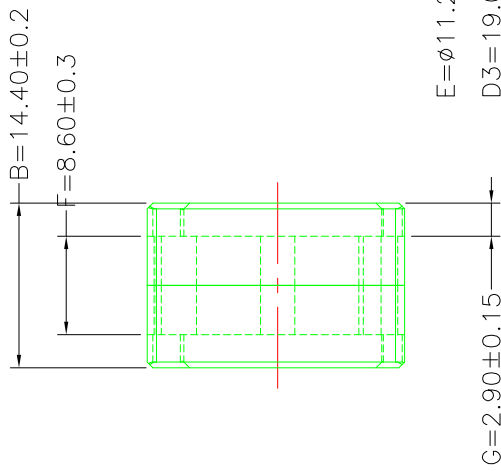
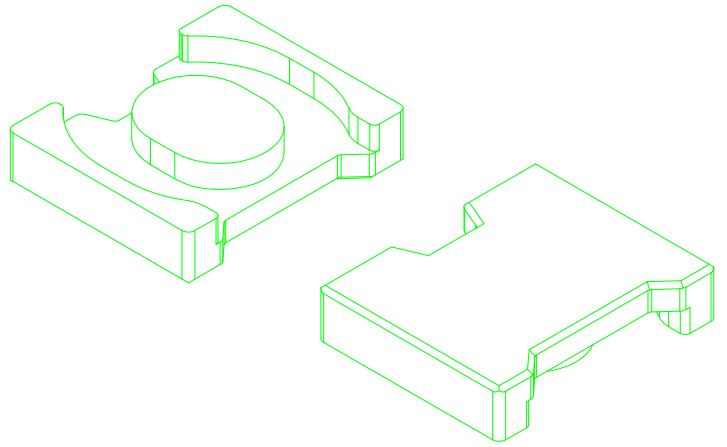
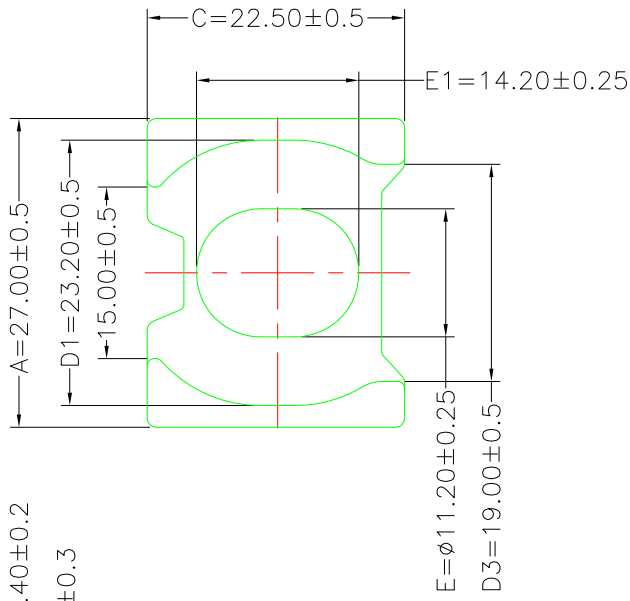
REV 3

**A-CORE**  
ELECTRICAL CO.

A-CORE JIANGMEN ELECTRONICS CO.,LTD  
江 门 安 磁 電 子 有 限 公 司  
Tel : 86-750-3867791 Fax : 86-750-3867787

REVISIONS

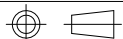
REV	SYM	DRAFTER	CHECKER	DATE
①		G.F.YANG	W.H.HSU	10/12/09
②				
③				



Core Set Parameters

Ae=131.5mm<sup>2</sup>  
Le=43mm  
C1=0.327mm<sup>-1</sup>  
Ve=5654.5mm<sup>3</sup>

DWG NO.	ATQ27/14.4-CORE				
PART NO.	MATERIAL (CORE)				NOTE
ATQ27/14.4	JPP-44A				
ATQ27/14.4	JPP-95				



TOLERANCE: 0<L<=4:±0.1 4<L<=16:±0.2 16<L<=63:±0.3

UNIT : m/m

SCALE 1 : 1

REV 1

**A-CORE**A-CORE JIANGMEN ELECTRONICS CO.,LTD  
江门安磁电子有限公司

ELECTRICAL CO. Tel : 86-750-3867791 Fax : 86-750-3867787

e-mail : sales@acore-ferrite.com

**TBI**TRANSFORMER BOBBIN  
INDUSTRIAL CO.,LTD.

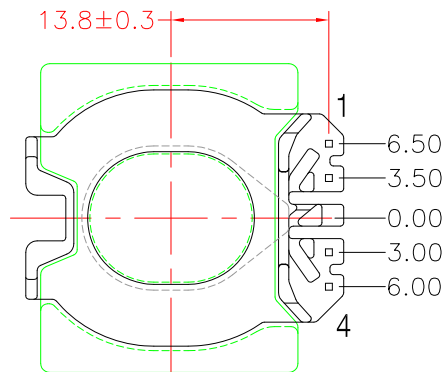
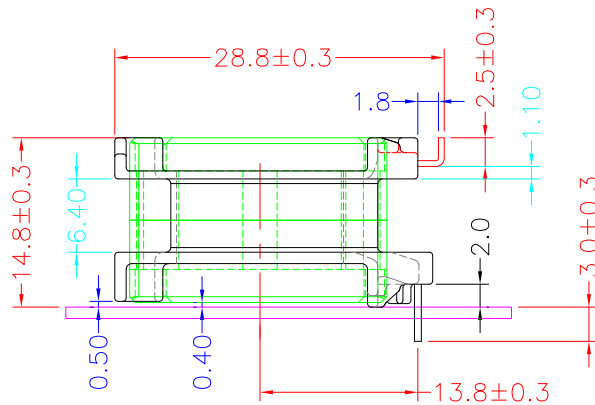
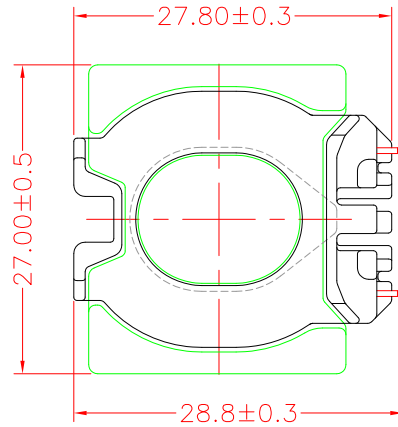
Tel : 86-769-88789999 Fax : 86-769-88789989

http:// tbi-tw.com e-mail : tb6688@ms46.hinet.net

## REVISIONS

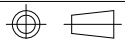
REV	SYM	DRAFTER	CHECKER	DATE
△1		X.H.GU	G.F.YANG	04/21/21
△2		X.H.GU	G.F.YANG	06/03/21
△3		X.H.GU	G.F.YANG	10/06/21

## TOP



## BOTTOM

ITEM	PART NO.	MATERIAL	DWG NO.	Core Set Parameters
CORE	ATQ27-14.4	JPP-44A		$A_e=131.5\text{mm}^2$ $L_e=43\text{mm}$ $C1=0.327\text{mm}^{-1}$ $V_e=5654.5\text{mm}^3$
CORE	ATQ27-14.4	JPP-95		
BOBBIN	TBI-238-48281.11XX	PM-9630	ATQ27-14.4-6P-TH-B8-11	



UNIT : m/m

SCALE 1 : 1

REV 3