

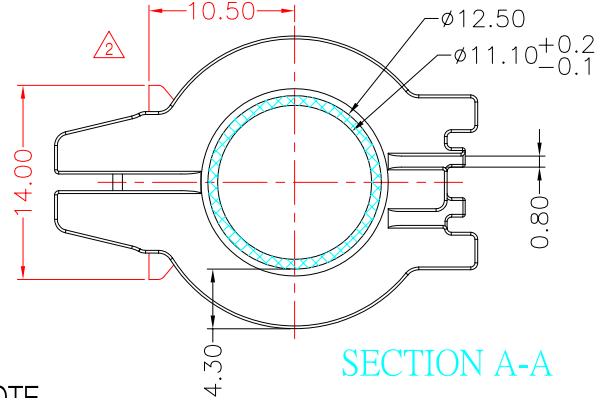
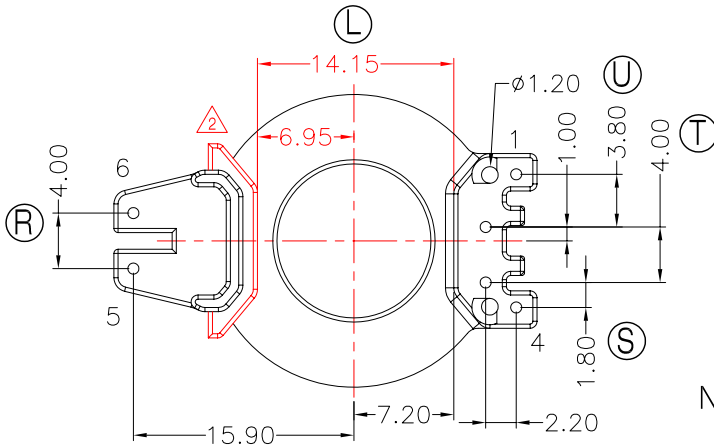
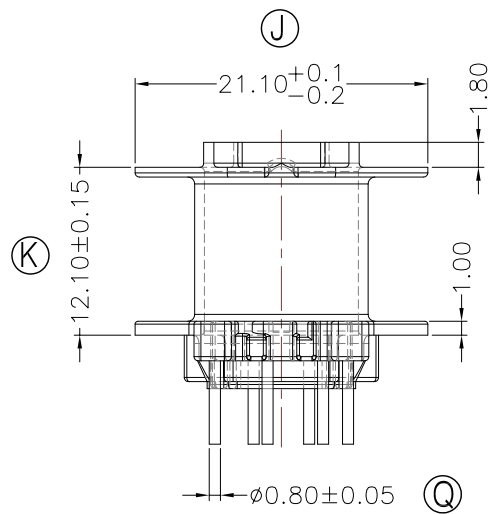
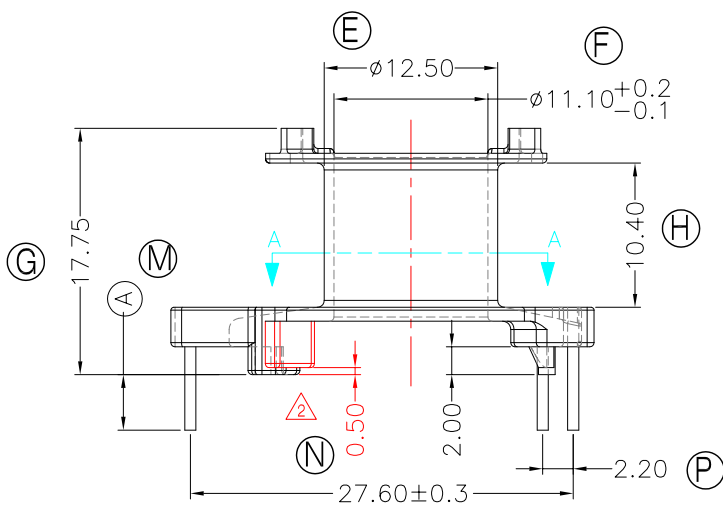
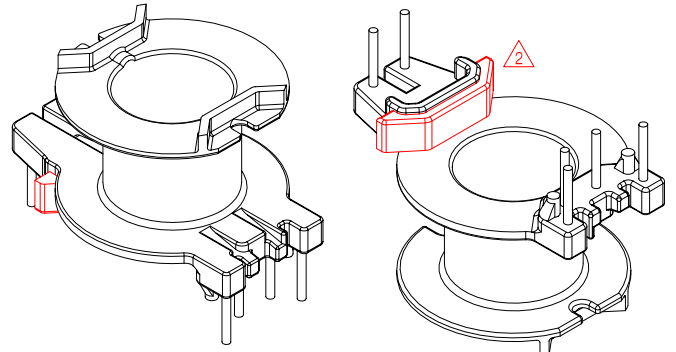
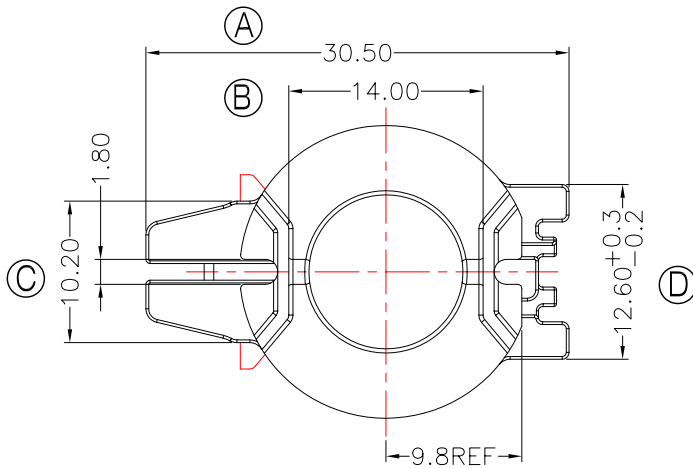


TRANSFORMER BOBBIN INDUSTRIAL CO.,LTD.

Tel : 86-769-88789999 Fax : 86-769-88789989
 http:// tbi-tw.com e-mail : tb6688@ms46.hinet.net

REVISIONS

REV	SYM	DRAFTER	CHECKER	DATE
1		X.H.GU	G.F.YANG	09/06/11
2		H.X.DUAN	G.F.YANG	02/29/12
3				



NOTE

Winding Space=10.4*4.3=44.72mm²

DWG NO. RM10-18.6-6P-TH-C6-12

PART NO.	MATERIAL (BOBBIN)	MATERIAL (TERMINAL)	TERMINAL (PLATING)	PIN ALLOCATION	NOTE
TBI-208-04361.1206	PM-9820(BK)	CP WIRE	Sn	ALL PIN (A) = 4.0±0.3	S
TBI-208-04361.1216	PM-9820(BK)	CP WIRE	Sn	ALL PIN (A) = 2.5±0.3	H

TOLERANCE: 0<L<=4:±0.1 4<L<=16:±0.2 16<L<=63:±0.3

UNIT : m / m

SCALE 1 : 1

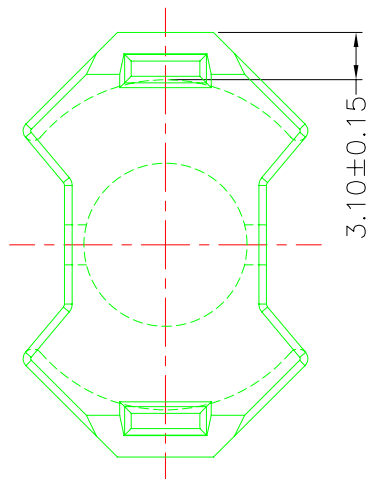
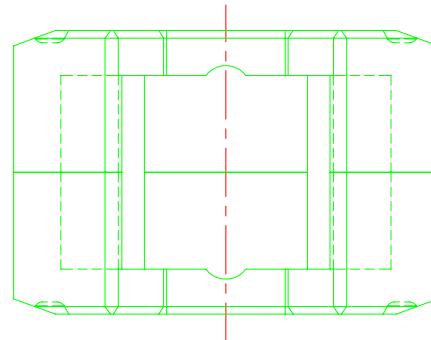
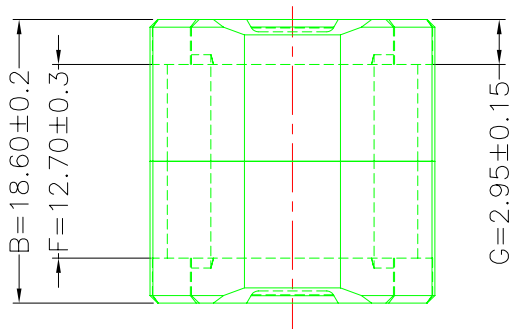
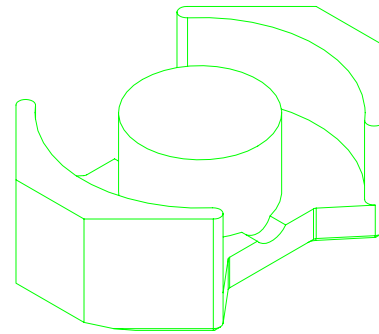
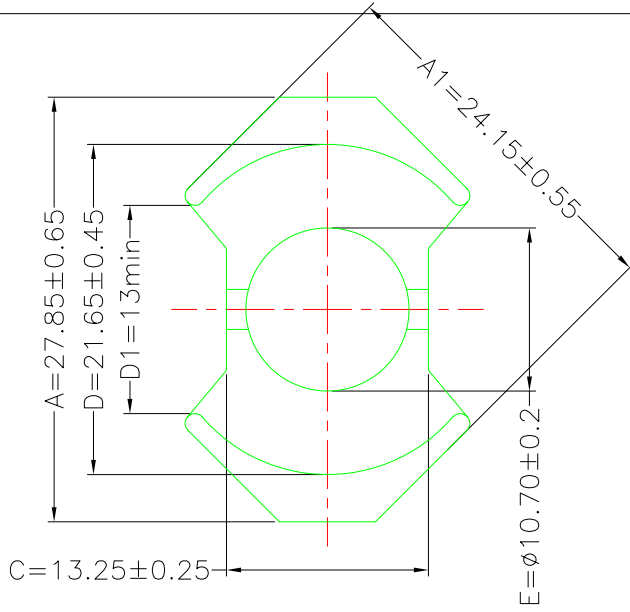
Finish: 1. PB wire Immersion Sn on terminal : Thickness:Sn plating,100,5 μm (200 μ inches) min,Base nickel 0.625 μm (25 μ inches) min.
 2. CP wire Immersion Sn on terminal : Thickness:Sn plating,100,5 μm (200 μ inches) min.
 3. Coplanarity deviation: 0.10 mm (0.004 inches) max.

REV 2

A-CORE
ELECTRICAL CO.

A-CORE JIANGMEN ELECTRONICS CO.,LTD
 江门安磁电子有限公司
 Tel: 86-750-3867791 Fax : 86-750-3867787

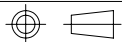
REVISIONS				
REV	SYM	DRAFTER	CHECKER	DATE
①		S.Y.TANG	G.F.YANG	12/20/08
②				
③				



Core Set Parameters

$A_e=98\text{mm}^2$
 $L_e=44\text{mm}$
 $C_l=0.449\text{mm}^{-1}$
 $V_e=4312\text{mm}^3$

DWG NO.	RM10/18.6 CORE				
PART NO.	MATERIAL (BOBBIN)	MATERIAL (TERMINAL)	TERMINAL (PLATING)	PIN ALLOCATION	NOTE
RM10/18.6	JPP-44A				
RM10/18.6	JPP-95				



UNIT : m/m

SCALE 2:1

REV 1

A-CORE

A-CORE JIANGMEN ELECTRONICS CO.,LTD
 江門安磁電子有限公司

TBI

TRANSFORMER BOBBIN
 INDUSTRIAL CO.,LTD.

ELECTRICAL CO. Tel : 86-750-3867791 Fax : 86-750-3867787

Tel : 86-769-88789999 Fax : 86-769-88789989

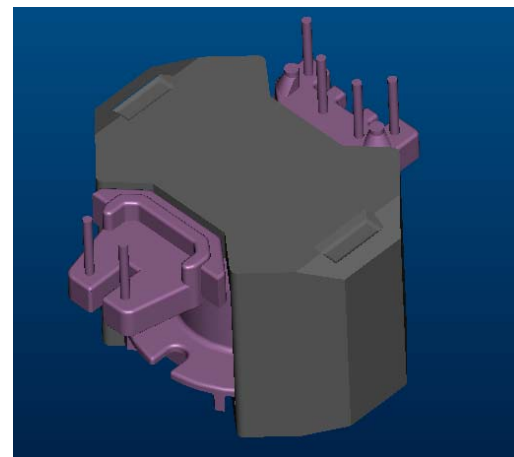
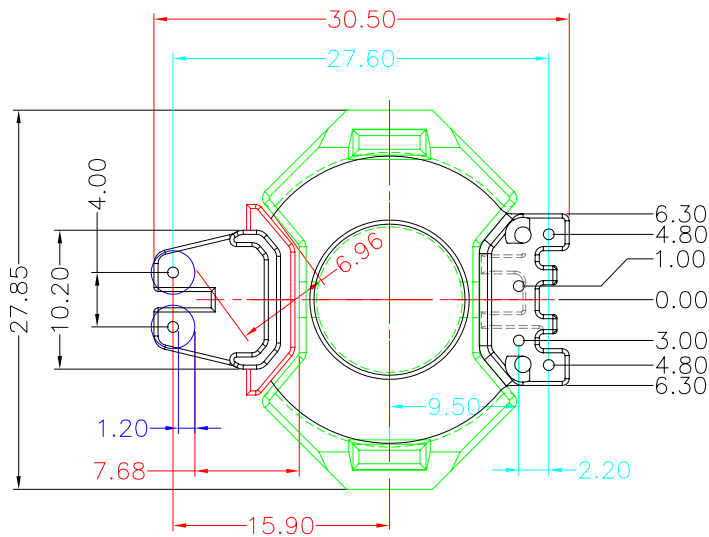
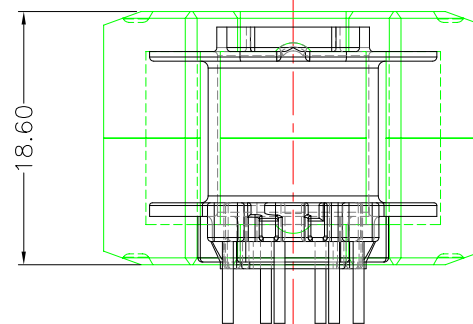
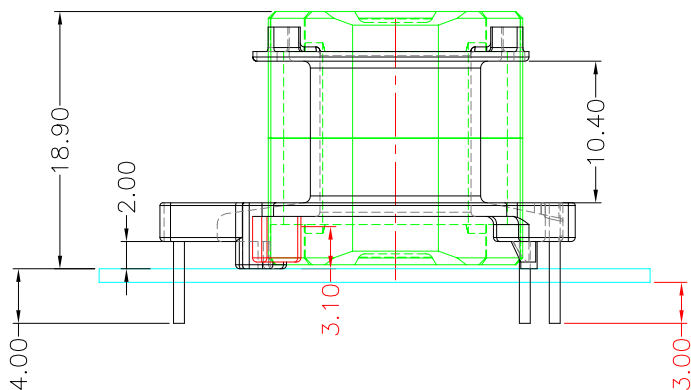
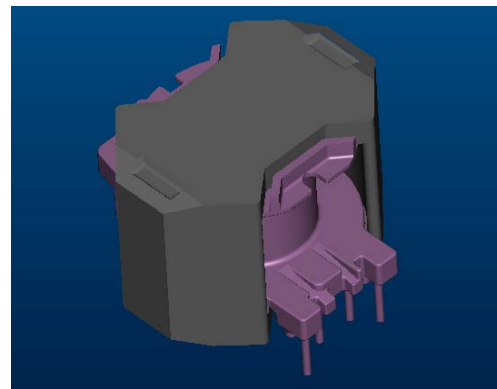
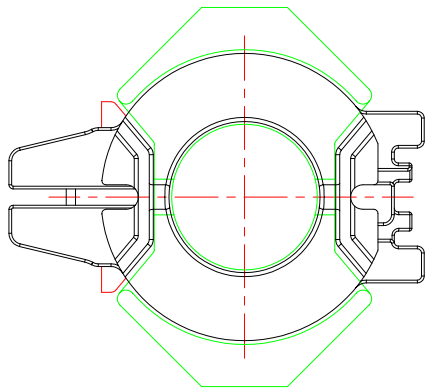
e-mail : sales@acore-ferrite.com

http:// tbi-tw.com e-mail : tb6688@ms46.hinet.net

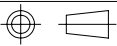
REVISIONS

REV	SYM	DRAFTER	CHECKER	DATE
△1		X.H.GU	G.F.YANG	09/06/11
△2		H.X.DUAN	G.F.YANG	02/29/12
△3				

TOP



BOTTOM

ITEM	PART NO.	MATERIAL	DWG NO.	Core Set Parameters
CORE	RM10/18.6	JPP-44A		$A_e=98\text{mm}^2$ $L_e=44\text{mm}$ $C_1=0.449\text{mm}^{-1}$ $V_e=4312\text{mm}^3$
CORE	RM10/18.6	JPP-95		
BOBBIN	TBI-208-04361.12XX		RM10-18.6-6P-TH-C6-12	
CASE	TBI-208-04071.91C		RM10-18.6-CASE-G-91	
 UNIT : m/m				SCALE 1:1
			REV	2