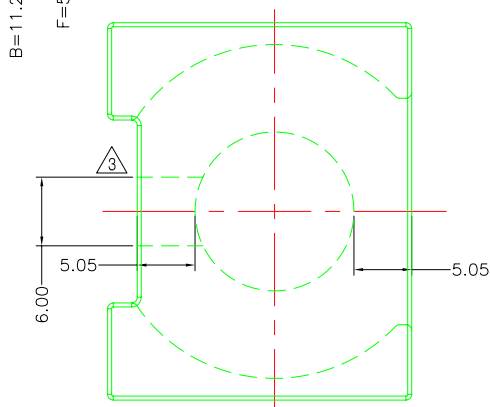
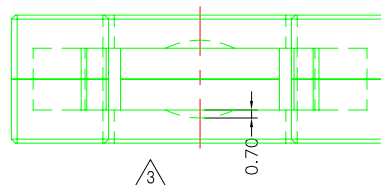
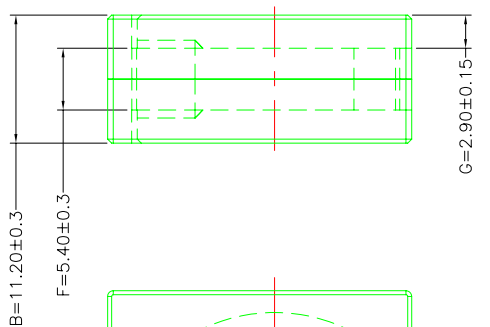
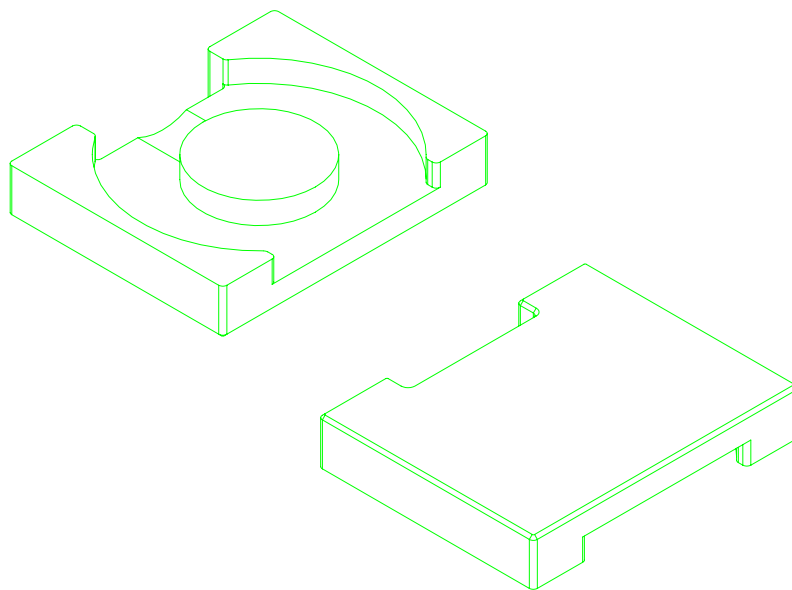
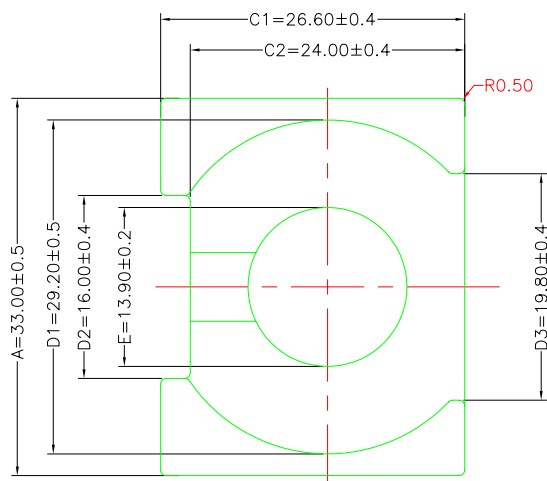


A-CORE
ELECTRICAL CO.

A-CORE JIANGMEN ELECTRONICS CO.,LTD
 江门安磁电子有限公司
 Tel: 86-750-3867791 Fax : 86-750-3867787

REVISIONS				
REV	SYM	DRAFTER	CHECKER	DATE
①		G.F.YANG	W.H.HSU	10/28/08
②		G.F.YANG	W.H.HSU	11/15/08
③		G.F.YANG	W.H.HSU	12/09/08

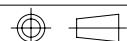


Core Set Parameters

$A_e = 151.8\text{mm}^2$
 $L_e = 38.3\text{mm}$
 $C_1 = 0.252\text{mm}^{-1}$
 $V_e = 5813.94\text{mm}^3$

DWG NO. LEP33/11.2-CORE

PART NO.	MATERIAL (CORE)			NOTE
LEP33/11.2	JPP-44A			
LEP33/11.2	JPP-95			



TOLERANCE: .XX±0.25 .XXX±0.127

UNIT : m / m

SCALE 1 : 1

Finish: 1. Pb wire Immersion Sn on terminal : Thickness:Sn plating,100,5 μm (200 μ inches) min,Base nickel 0.625 μm (25 μ inches) min.
 2. CP wire Immersion Sn on terminal : Thickness:Sn plating,100,5 μm (200 μ inches) min.
 3. Coplanarity deviation: 0.10 mm (0.004 inches) max.

REV 3

A-CORE

A-CORE JIANGMEN ELECTRONICS CO.,LTD
 江門安磁電子有限公司

TBI

TRANSFORMER BOBBIN
 INDUSTRIAL CO.,LTD.

ELECTRICAL CO. Tel : 86-750-3867791 Fax : 86-750-3867787

Tel : 86-769-88789999 Fax : 86-769-88789989

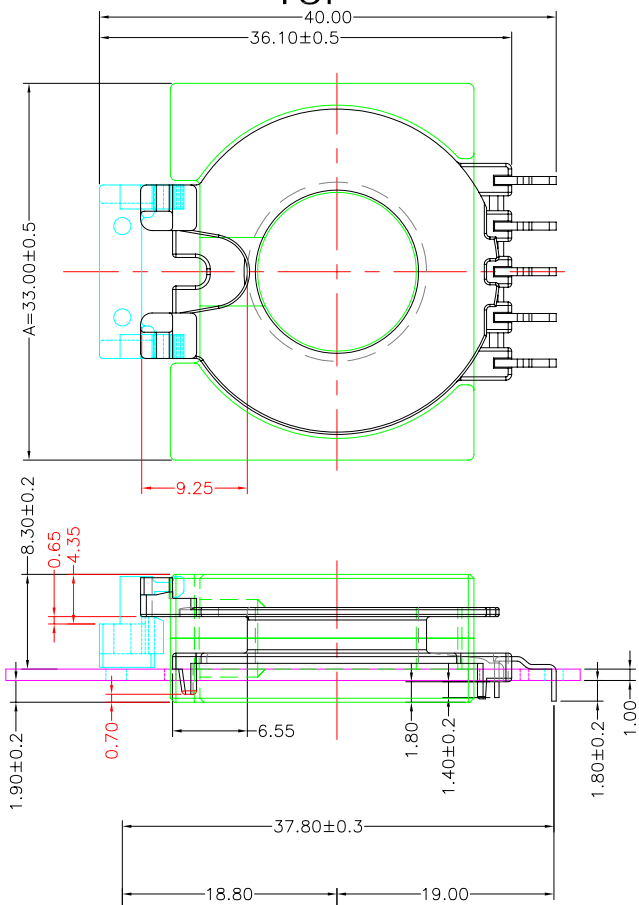
e-mail : sales@acore-ferrite.com

http:// tbi-tw.com e-mail : tb6688@ms46.hinet.net

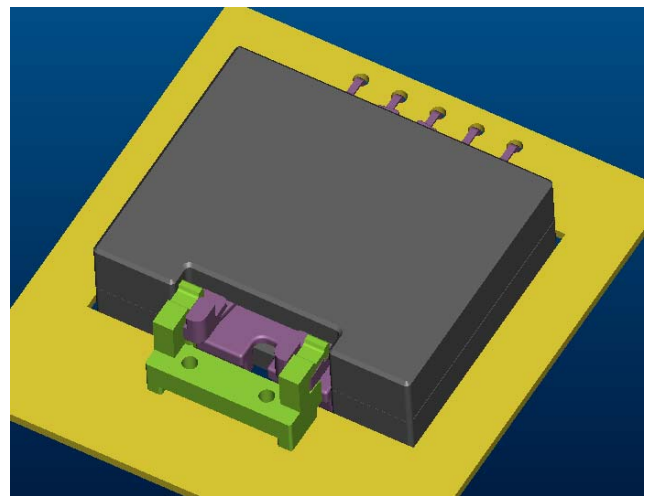
REVISIONS

REV	SYM	DRAFTER	CHECKER	DATE
△1		G.F.YANG	W.H.HSU	07/07/11
△2		X.H.GU	G.F.YANG	08/19/11
△3		X.H.GU	G.F.YANG	11/24/12

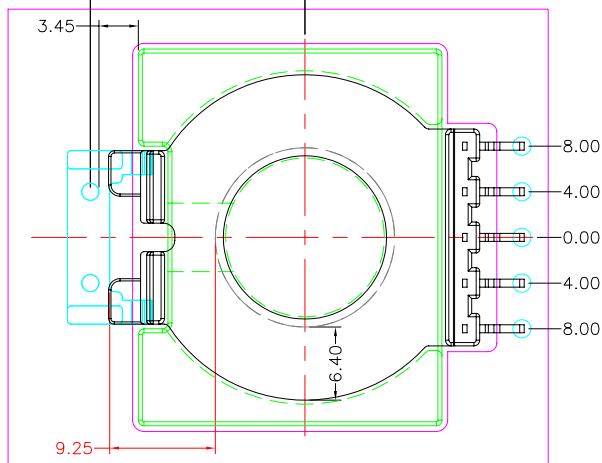
TOP



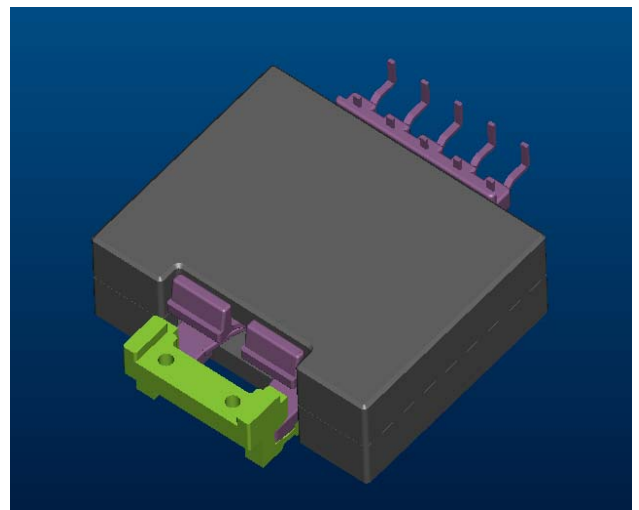
TOP



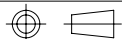
BOTTOM



BOTTOM



ITEM	PART NO.	MATERIAL	DWG NO.	Core Set Parameters
CORE	LEP33/11.2	JPP-44A		Ae =151.8mm ² Le =38.3mm C1 =0.252mm ⁻¹ Ve =5813.94mm ³
CORE	LEP33/11.2	JPP-95		
BOBBIN	TBI-236-01061.11XX		LEP33/11.2-5P-THT-F-11	
BASE	TBI-236-01061.91B		LEP33/11.2-BASE-F-91	



UNIT : m / m

SCALE 1 : 1

REV 3