

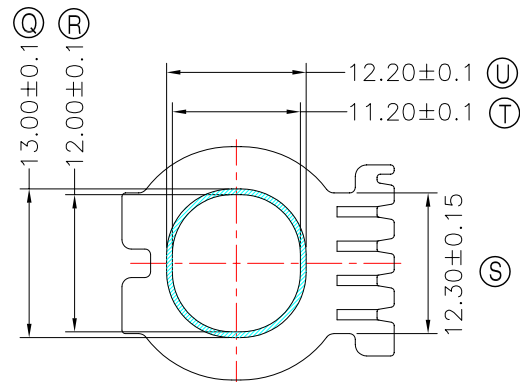
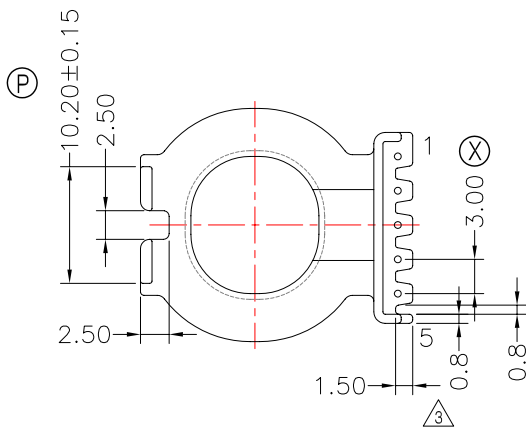
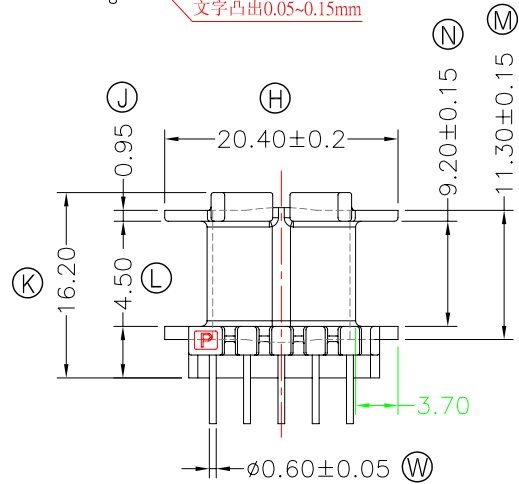
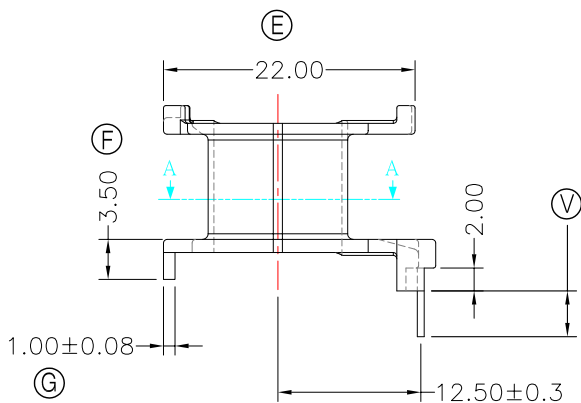
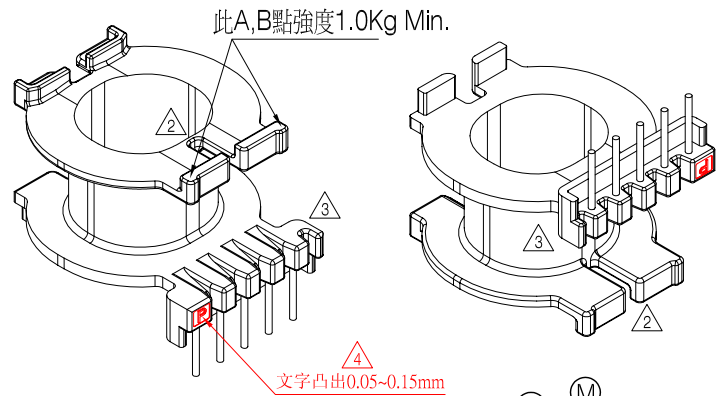
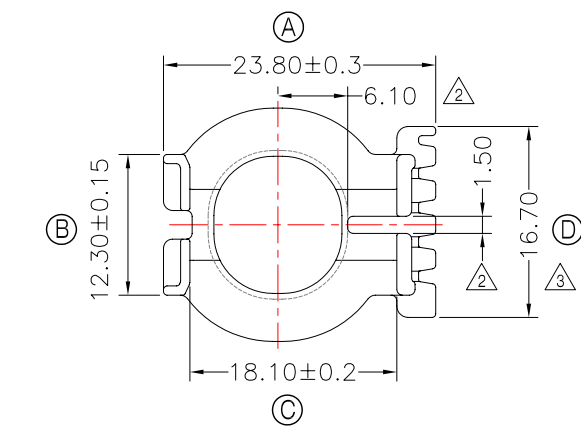


TRANSFORMER BOBBIN  
INDUSTRIAL CO.,LTD.

Tel : 86-769-88789999 Fax : 86-769-88789989  
http:// tbi-tw.com e-mail : tb6688@ms46.hinet.net

REVISIONS

REV	SYM	DRAFTER	CHECKER	DATE
2		X.H.GU	G.F.YANG	07/01/14
3		X.H.GU	G.F.YANG	09/17/14
4		X.H.GU	G.F.YANG	11/07/16



NOTE:

Section A-A

1. 焊錫前拉力:1.0KG MIN, 焊錫後拉力:1.5KG MIN;
2. 任意一點強度須1.8kg MIN;(除了特別指出外)
3. WINDING SPACE:9.2mm\*3.7mm=34.04mm<sup>2</sup> 與TBI-238-01501.12C(ATQ24-17A-CASE-E0-12)配套使用;

DWG NO. ATQ24-17A-5P-TH-E0-12

PART NO.	MATERIAL (BOBBIN)	MATERIAL (TERMINAL)	TERMINAL (PLATING)	PIN ALLOCATION	NOTE
TBI-238-01501.1206	PM-9820	CP WIRE	Sn	ALL PIN (V) =4.0±0.2	S
TBI-238-01501.1216	PM-9820	CP WIRE	Sn	ALL PIN (V) =5.5±0.2	H
TBI-238-01501.1226	PM-9820	CP WIRE	Sn	ALL PIN (V) =5.0±0.2	

TOLERANCE: 0<L<=4:±0.1 4<L<=16:±0.2 16<L<=63:±0.3

UNIT : m / m

SCALE 1 : 1

Finish: 1. PB wire Immersion Sn on terminal : Thickness:Sn plating,100%,5 μm (200 μ inches) min,Base nickel 0.625 μm (25 μ inches) min.  
2. CP wire Immersion Sn on terminal : Thickness:Sn plating,100%,5 μm (200 μ inches) min.  
3. Coplanarity deviation: 0.10 mm (0.004 inches) max.

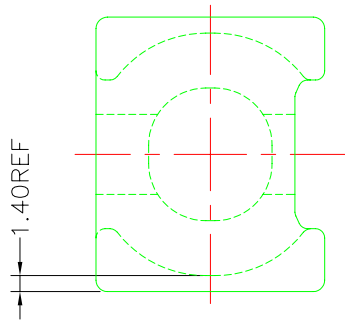
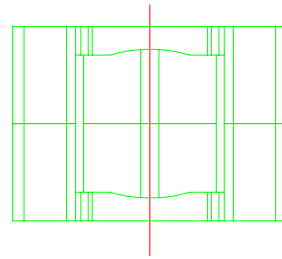
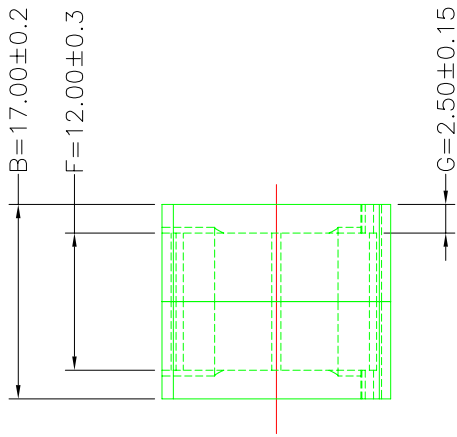
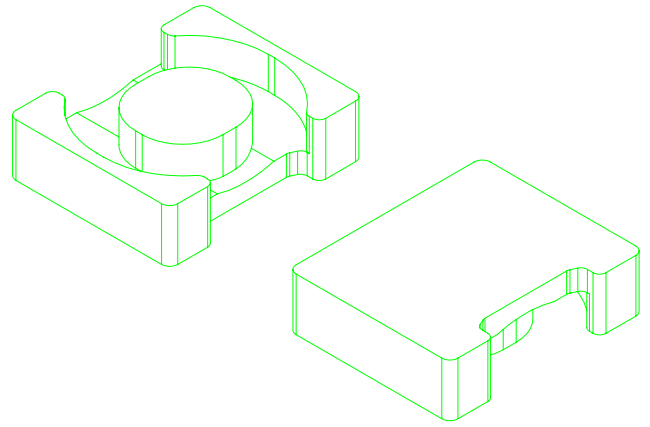
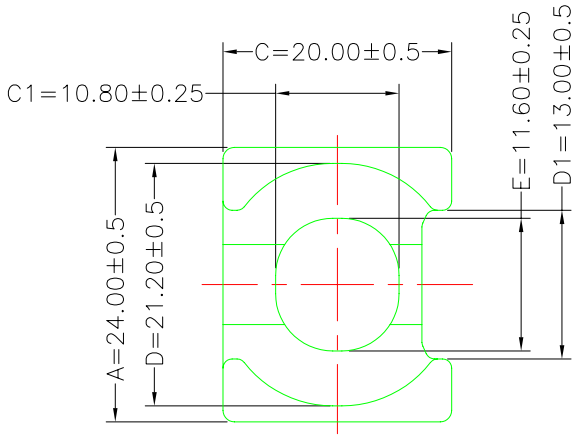
REV 4



**A-CORE**  
ELECTRICAL CO.

A-CORE JIANGMEN ELECTRONICS CO.,LTD  
江門安磁電子有限公司  
Tel : 86-750-3867791 Fax : 86-750-3867787

REVISIONS				
REV	SYM	DRAFTER	CHECKER	DATE
1		F.LU	G.F.YANG	04/19/12
2				
3				



### Core Set Parameters

$A_e=106\text{mm}^2$   
 $L_e=45.2\text{mm}$   
 $C_1=0.426\text{mm}^{-1}$   
 $V_e=4791.2\text{mm}^3$

DWG NO.	ATQ24/17A CORE				
PART NO.	MATERIAL (BOBBIN)	MATERIAL (TERMINAL)	TERMINAL (PLATING)	PIN ALLOCATION	NOTE
ATQ24/17A	JPP-44A				
ATQ24/17A	JPP-95				
Finish:	TOLERANCE: 0<L<=4:±0.1 4<L<=16:±0.2 16<L<=63:±0.3			UNIT : m / m	SCALE 1 : 1
				REV	1

**A-CORE**

A-CORE JIANGMEN ELECTRONICS CO.,LTD  
江門安磁電子有限公司

**TBI**

TRANSFORMER BOBBIN  
INDUSTRIAL CO.,LTD.

ELECTRICAL CO. Tel : 86-750-3867791 Fax : 86-750-3867787

Tel : 86-769-88789999 Fax : 86-769-88789989

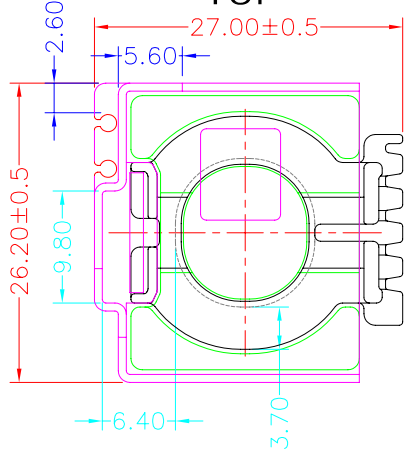
e-mail : sales@acore-ferrite.com

http:// tbi-tw.com e-mail : tb6688@ms46.hinet.net

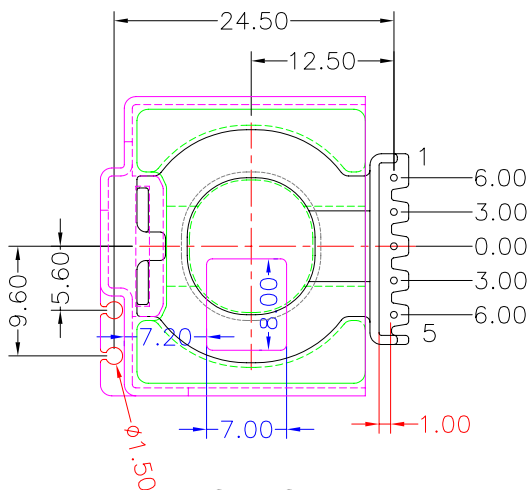
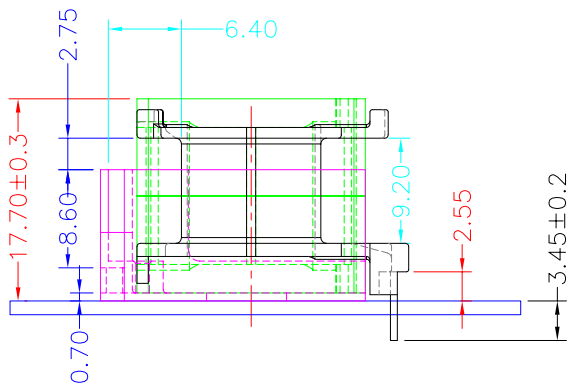
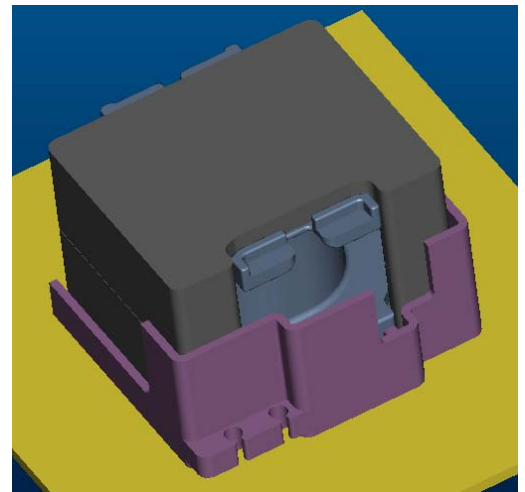
REVISIONS

REV	SYM	DRAFTER	CHECKER	DATE
△2		X.H.GU	G.F.YANG	07/01/14
△3		X.H.GU	G.F.YANG	09/17/14
△4		X.H.GU	G.F.YANG	10/07/16

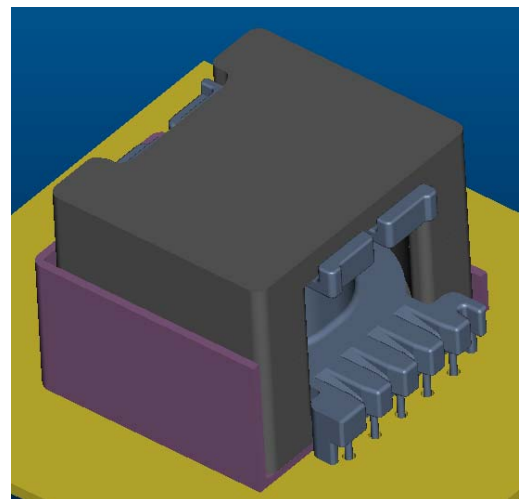
TOP



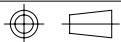
TOP



BOTTOM



ITEM	PART NO.	MATERIAL	DWG NO.	Core Set Parameters
CORE	ATQ24/17A	JPP-44A		$A_e=106\text{mm}^2$ $L_e=45.2\text{mm}$ $C_1=0.426\text{mm}^{-1}$ $V_e=4791.2\text{mm}^3$
CORE	ATQ24/17A	JPP-95		
BOBBIN	TBI-238-01501.12XX		ATQ24-17A-5P-TH-E0-12	
CASE	TBI-238-01501.12C		ATQ24-17A-CASE-E0-12	



UNIT : m/m

SCALE 1 : 1

REV

4