

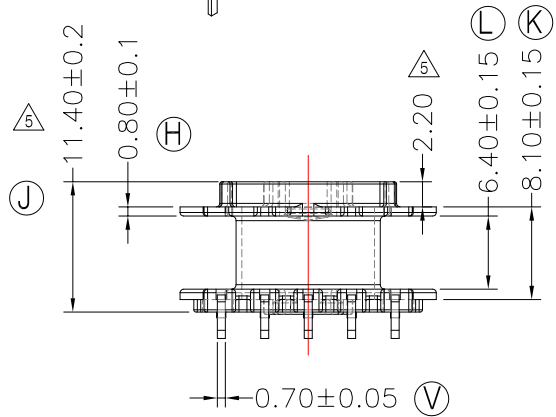
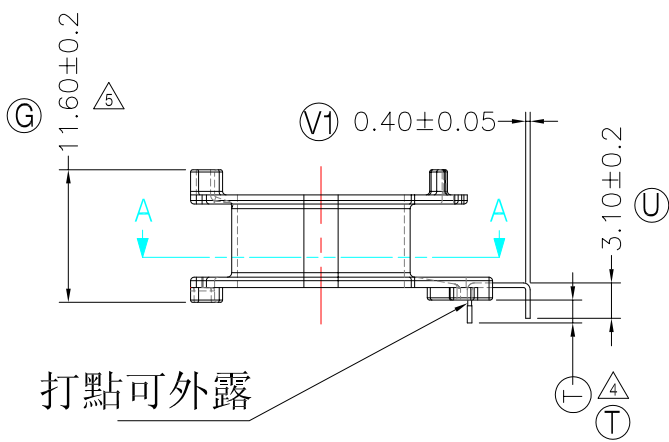
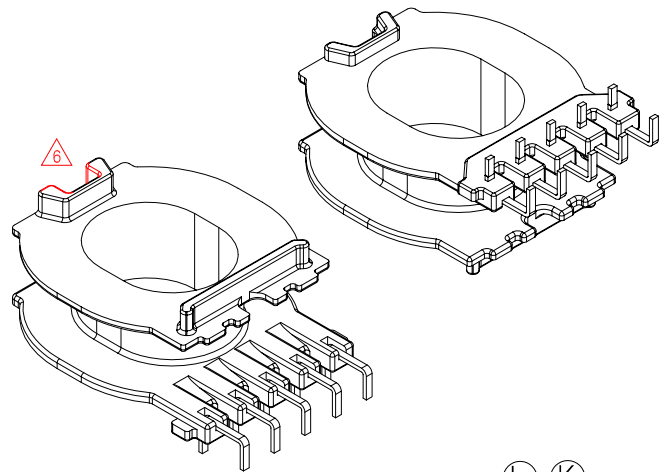
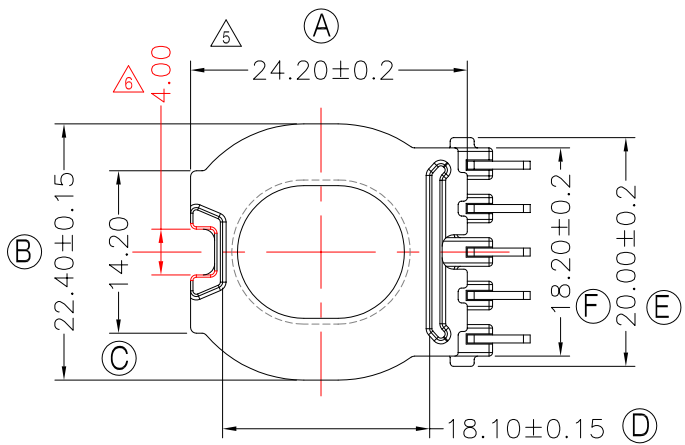


TRANSFORMER BOBBIN
INDUSTRIAL CO.,LTD.

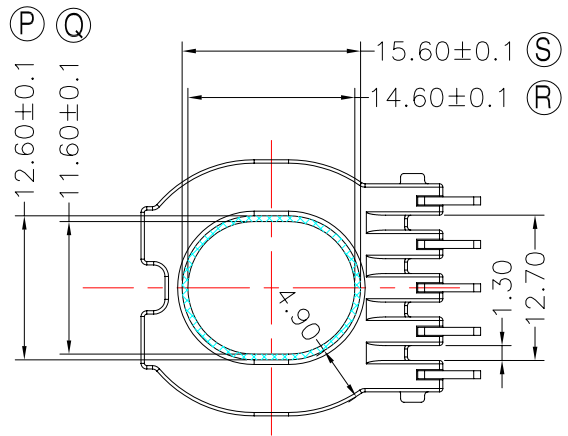
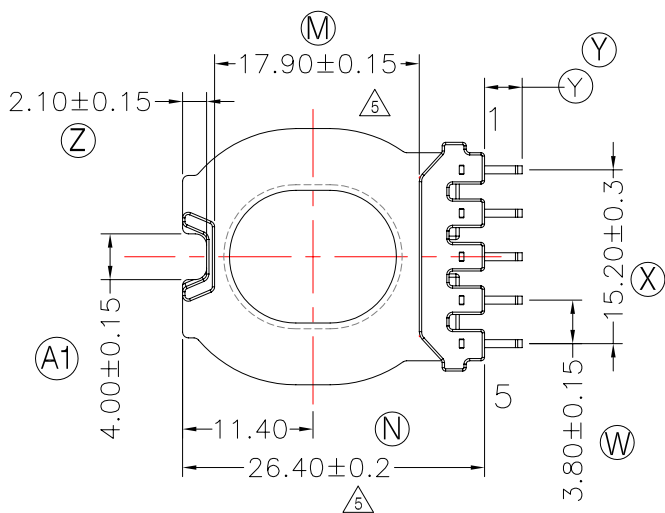
Tel : 86-769-88789999 Fax : 86-769-88789999
http:// tbi-tw.com e-mail : tb6688@ms46.hinet.net

REVISIONS

REV	SYM	DRAFTER	CHECKER	DATE
4		X.X.YUAN	G.F.YANG	05/24/12
5		X.H.GU	G.F.YANG	09/08/12
6		H.X.DUAN	G.F.YANG	12/02/13



打點可外露



1. 推力0.8 MIN;
2. 在制成品變壓器時PIN腳需點膠固定;

DWG NO. ATQ27-14.4-5P-TU-F3-11

PART NO.	MATERIAL (BOBBIN)	MATERIAL (TERMINAL)	TERMINAL (PLATING)	PIN ALLOCATION	NOTE
TBI-238-03631.1106	PM-9630	CP WIRE	Sn	ALL PIN (T)=2.0±0.2 (Y)=3.3±0.3	S
TBI-238-03631.1116	PM-9630	CP WIRE	Sn	ALL PIN (T)=2.0±0.2 (Y)=2.7±0.2	H
TBI-238-03631.1126	PM-9630	CP WIRE	Sn	CUT PIN#4 (T)=2.0±0.2 (Y)=3.3±0.3	
TBI-238-03631.1136	PM-9630	CP WIRE	Sn	ALL PIN (T)=1.8+0.15/-0.2 (Y)=3.3±0.3	

TOLERANCE: 0<L<=4:±0.1 4<L<=16:±0.2 16<L<=63:±0.3

UNIT : m / m

SCALE 1 : 1

Finish: 1. PB wire Immersion Sn on terminal : Thickness:Sn plating,100,5 μm (200 μ inches) min,Base nickel 0.625 μm (25 μ inches) min.
2. CP wire Immersion Sn on terminal : Thickness:Sn plating,100,5 μm (200 μ inches) min.
3. Coplanarity deviation: 0.10 mm (0.004 inches) max.

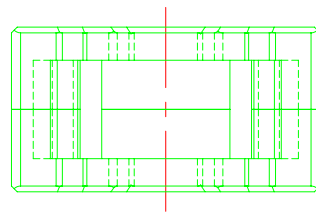
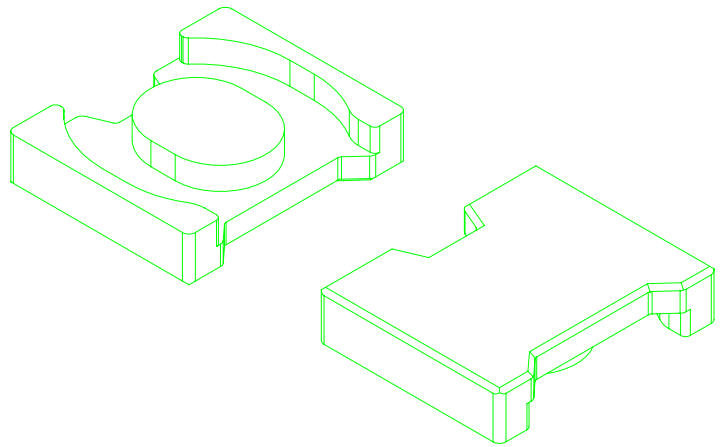
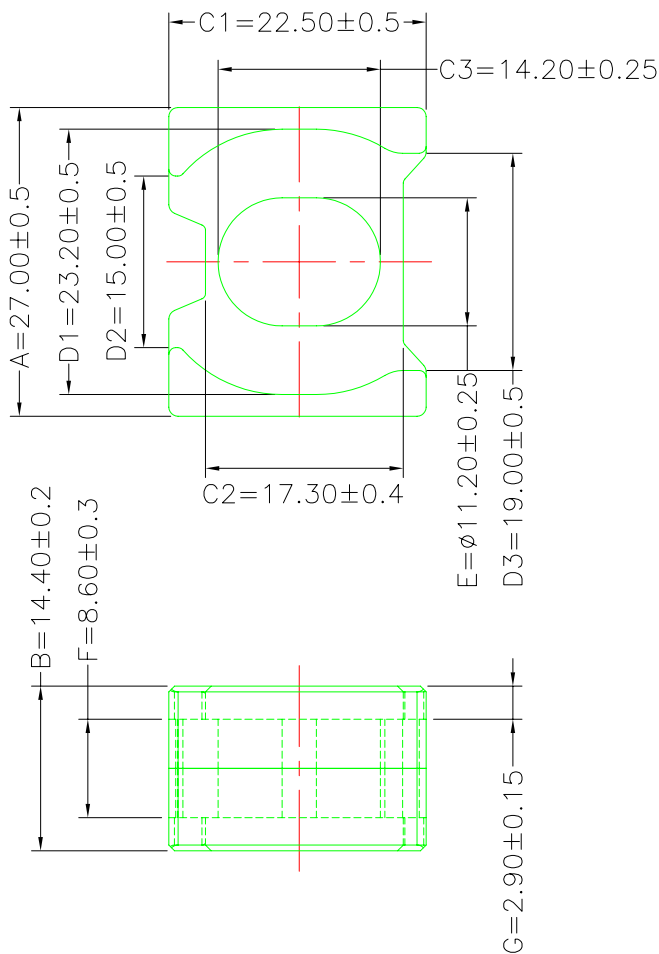
REV 6

A-CORE
ELECTRICAL CO.

A-CORE JIANGMEN ELECTRONICS CO.,LTD
 江门安磁电子有限公司
 Tel: 86-750-3867791 Fax: 86-750-3867787

REVISIONS

REV	SYM	DRAFTER	CHECKER	DATE
①		G.F.YANG	W.H.HSU	10/12/09
②				
③				



Core Set Parameters

$A_e=132\text{mm}^2$
 $L_e=43.0\text{mm}$
 $C1=0.326\text{mm}^{-1}$
 $V_e=5676\text{mm}^3$

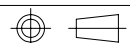
DWG NO. ATQ27/14.4-CORE

PART NO. MATERIAL (CORE)

ATQ27/14.4 JPP-44A

ATQ27/14.4 JPP-95

NOTE



TOLERANCE: $0 < L \leq 4: \pm 0.1$ $4 < L \leq 16: \pm 0.2$ $16 < L \leq 63: \pm 0.3$

UNIT : m / m

SCALE 1 : 1

REV

1

A-CORE

A-CORE JIANGMEN ELECTRONICS CO.,LTD
江門安磁電子有限公司

TBI

TRANSFORMER BOBBIN
INDUSTRIAL CO.,LTD.

ELECTRICAL CO. Tel : 86-750-3867791 Fax : 86-750-3867787

Tel : 86-769-88789999 Fax : 86-769-88789989

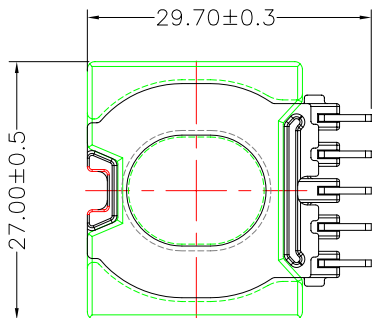
e-mail : sales@acore-ferrite.com

http:// tbi-tw.com e-mail : tb6688@ms46.hinet.net

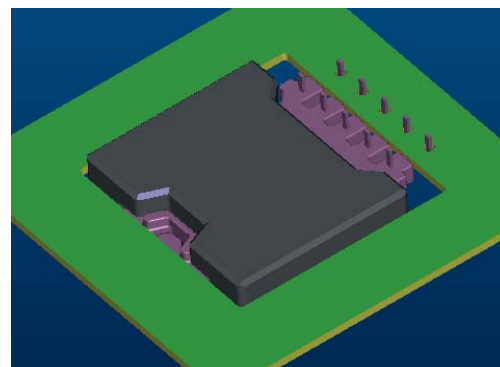
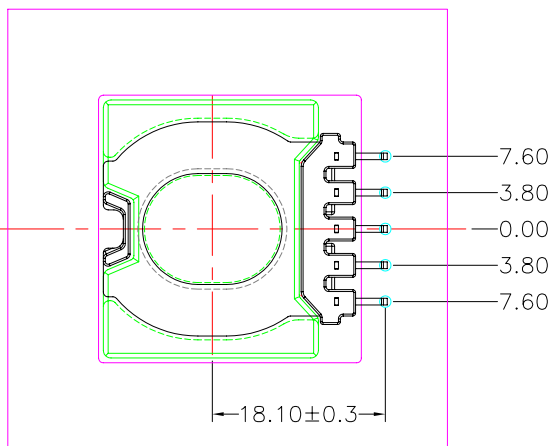
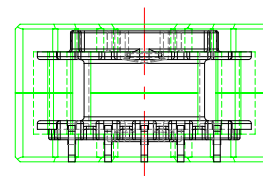
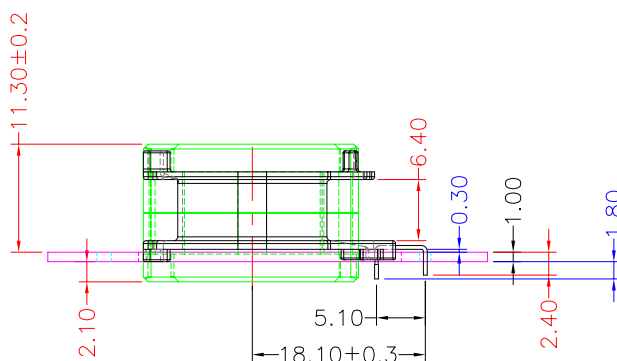
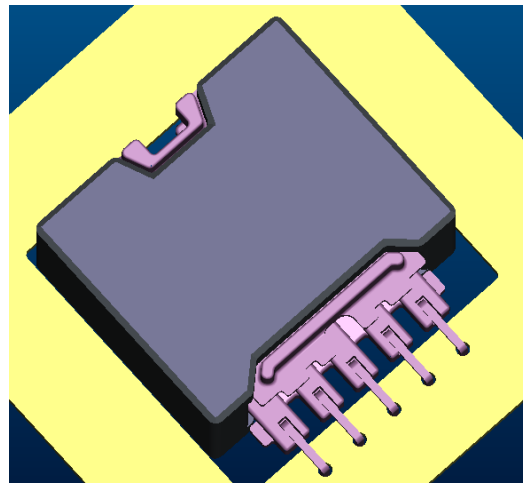
REVISIONS

REV	SYM	DRAFTER	CHECKER	DATE
△4		X.X.YUAN	G.F.YANG	05/24/12
△5		X.H.GU	G.F.YANG	09/08/12
△6		H.X.DUAN	G.F.YANG	12/02/13

TOP



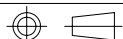
TOP



BOTTOM

BOTTOM

ITEM	PART NO.	MATERIAL	DWG NO.	Core Set Parameters
CORE	ATQ27/14.4	JPP-44A		$A_e=132\text{mm}^2$ $L_e=43.0\text{mm}$ $C1=0.326\text{mm}^{-1}$ $V_e=5676\text{mm}^3$
CORE	ATQ27/14.4	JPP-95		
BOBBIN	TBI-238-03631.11XX		ATQ27-14.4-5P-TU-F3-11	



UNIT : m/m

SCALE 1 : 1

REV

6