

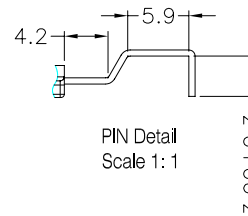
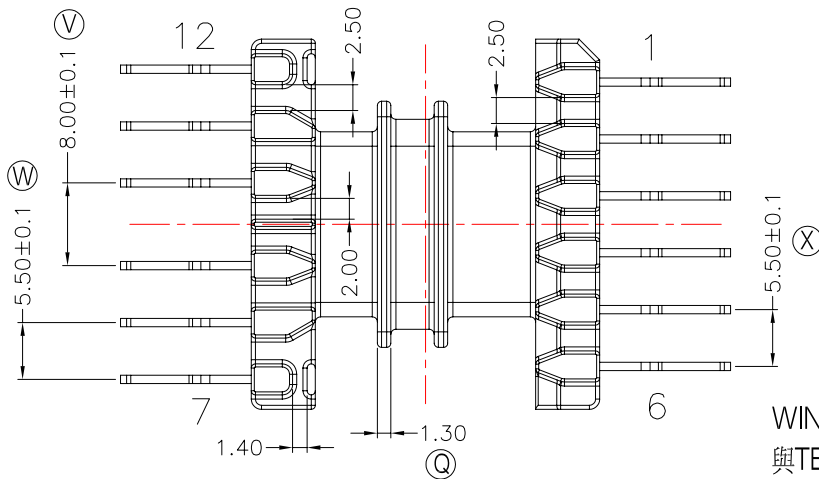
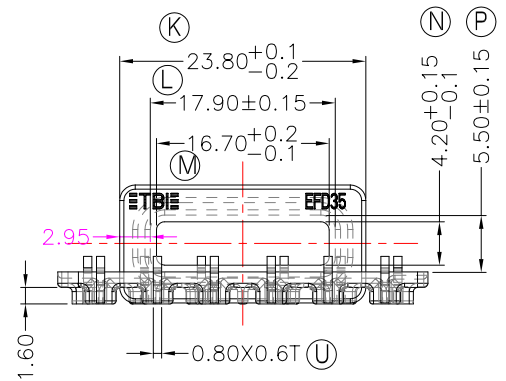
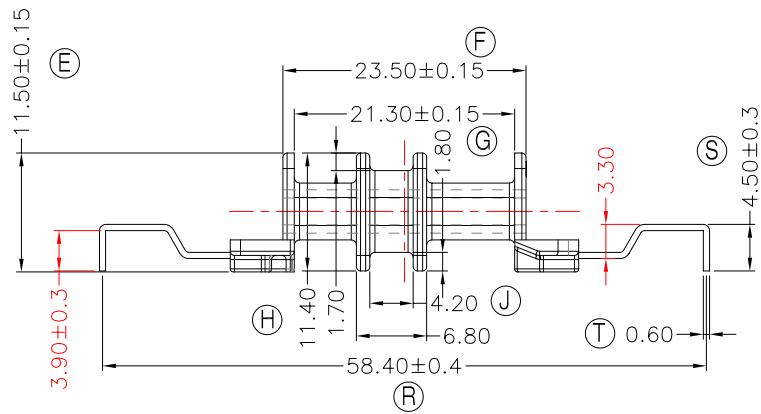
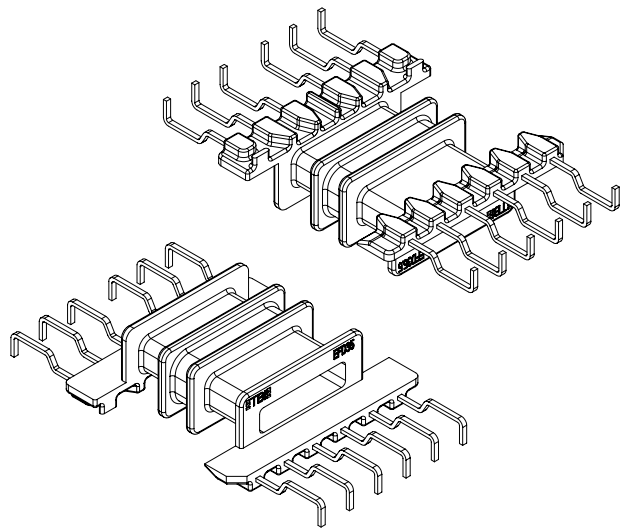
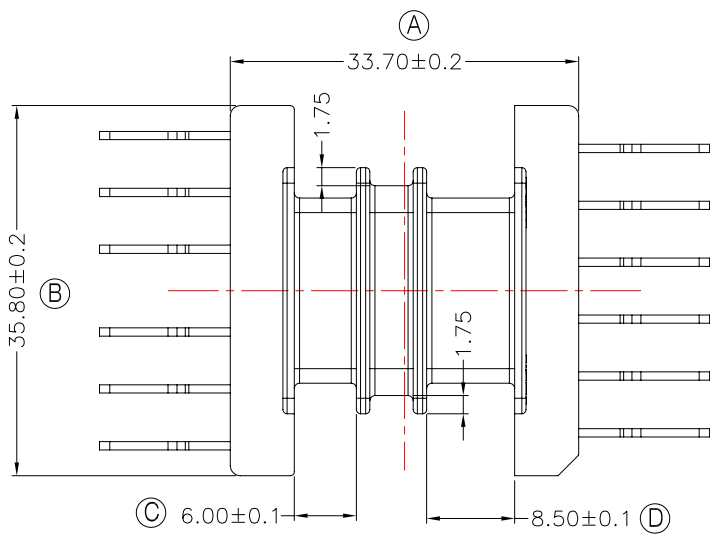


**TRANSFORMER BOBBIN
INDUSTRIAL CO.,LTD.**

Tel : 86-769-88789999 Fax : 86-769-88789999
http:// tbi-tw.com e-mail : tb6688@ms46.hinet.net

REVISIONS

REV	SYM	DRAFTER	CHECKER	DATE
1		G.F.YANG	W.H.HSU	10/08/10
2				
3				



焊錫前拉力:1.0KG MIN
焊錫後拉力:1.5KG MIN
任意一點強度須3.0kg MIN;

WINDING SPACE: (6.0+8.5)*2.95mm=42.78mm²
與TBI-207-21061.91C(EFD3535-CASE-0F-91)配套使用;

DWG NO. EFD3535-12P-THT-0H-11

PART NO. MATERIAL (BOBBIN) MATERIAL (TERMINAL) TERMINAL (PLATING) PIN ALLOCATION NOTE

TBI-207-21081.1106 PM-9630 CP WIRE Sn ALL PIN S

H

TOLERANCE: 0<L<=4: ±0.1 4<L<=16: ±0.2 16<L<=63: ±0.3

UNIT : m / m

SCALE 1 : 1

Finish: 1. PB wire Immersion Sn on terminal : Thickness:Sn plating,100,5 μm (200 μ inches) min,Base nickel 0.625 μm (25 μ inches) min.
2. CP wire Immersion Sn on terminal : Thickness:Sn plating,100,5 μm (200 μ inches) min.
3. Coplanarity deviation: 0.10 mm (0.004 inches) max.

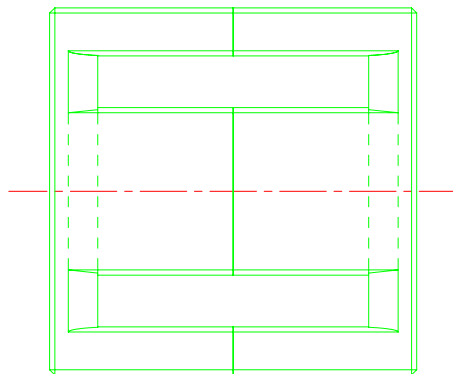
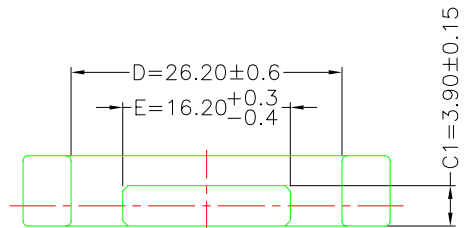
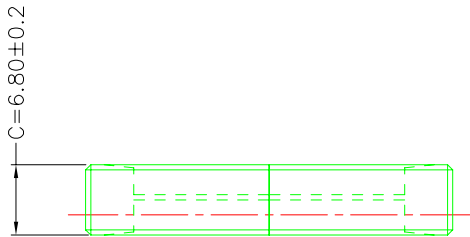
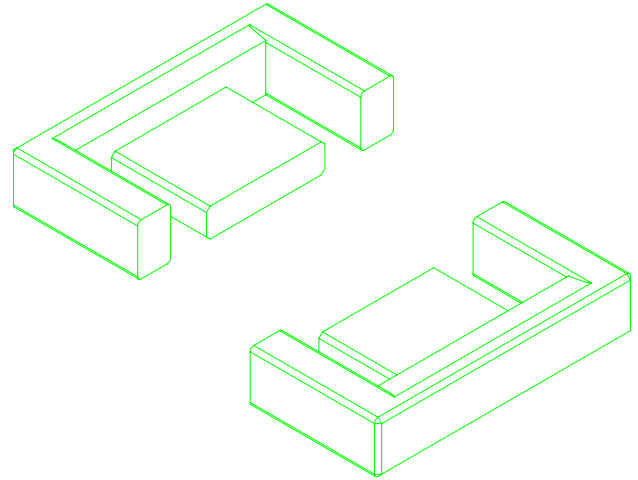
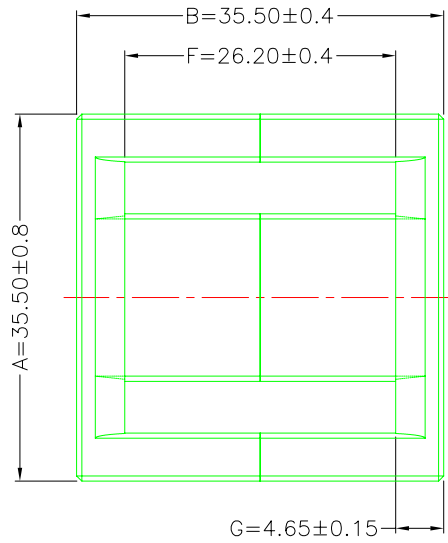
REV 1

A-CORE

ELECTRICAL CO.

A-CORE JIANGMEN ELECTRONICS CO.,LTD
 江門安磁電子有限公司
 Tel: 86-750-3867791 Fax : 86-750-3867787

REVISIONS				
REV	SYM	DRAFTER	CHECKER	DATE
1		X.H.GU	G.F.YANG	06/19/10
2				
3				



$A_e=63.21\text{mm}^2$
 $L_e=80.1\text{mm}$
 $C1=1.267\text{mm}^{-1}$
 $V_e=5063.121\text{mm}^3$

DWG NO.	EFD35 /35 CORE				
PART NO.	MATERIAL (BOBBIN)	MATERIAL (TERMINAL)	TERMINAL (PLATING)	PIN ALLOCATION	NOTE
EFD35/35	JPP-44A				
EFD35/35	JPP-95				
Finish:	TOLERANCE: $0 < L \leq 4$: ± 0.1 $4 < L \leq 16$: ± 0.2 $16 < L \leq 63$: ± 0.3			UNIT : m / m	SCALE 1 : 1
				REV	1

A-CORE

A-CORE JIANGMEN ELECTRONICS CO.,LTD
江門安磁電子有限公司

TBI

TRANSFORMER BOBBIN INDUSTRIAL CO.,LTD.

ELECTRICAL CO. Tel : 86-750-3867791 Fax : 86-750-3867787

Tel : 86-769-88789999 Fax : 86-769-88789989

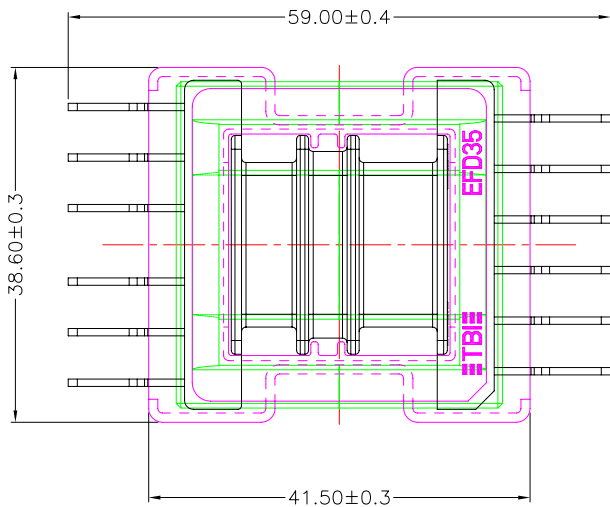
e-mail : sales@acore-ferrite.com

http:// tbi-tw.com e-mail : tb6688@ms46.hinet.net

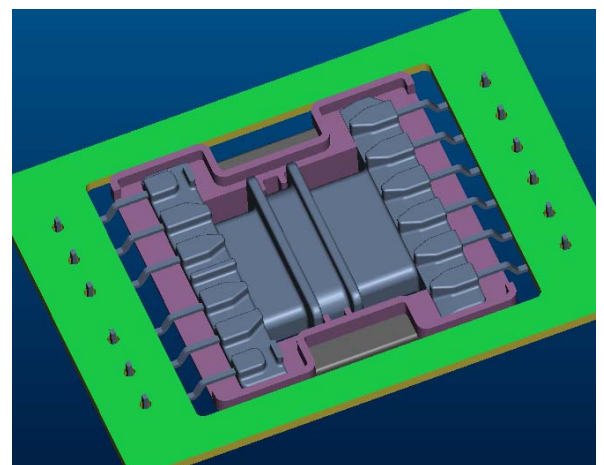
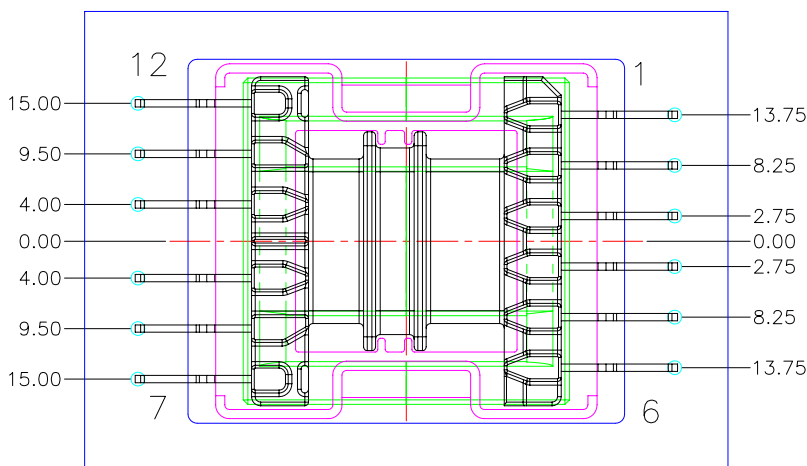
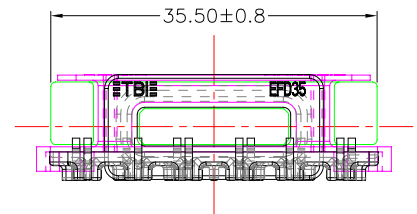
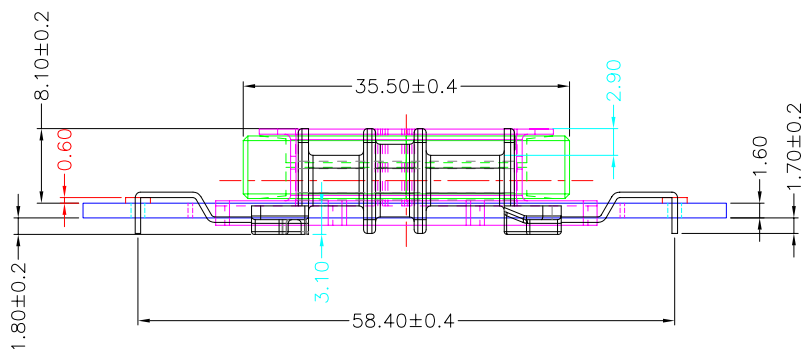
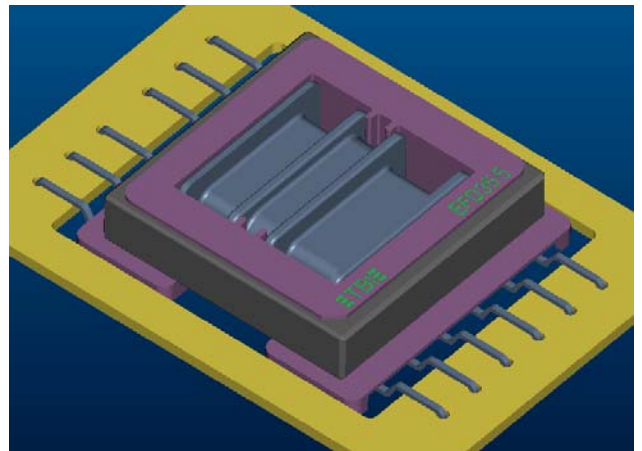
REVISIONS

REV	SYM	DRAFTER	CHECKER	DATE
△1		G.F.YANG	W.H.HSU	10/08/10
△2				
△3				

TOP



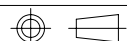
TOP



BOTTOM

BOTTOM

ITEM	PART NO.	MATERIAL	DWG NO.	Core Set Parameters
CORE	EFD35/35	JPP-44A		$A_e=63.21\text{mm}^2$ $L_e=80.1\text{mm}$ $C_1=1.267\text{mm}^{-1}$ $V_e=5063.121\text{mm}^3$
CORE	EFD35/35	JPP-95		
BOBBIN	TBI-207-21081.11XX		EFD3535-12P-THT-0H-11	
CASE	TBI-207-21061.91C		EFD3535-CASE-0F-91	



UNIT : m / m

SCALE 1 : 1

REV 1