

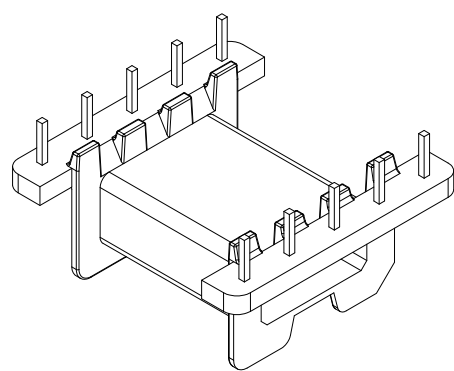
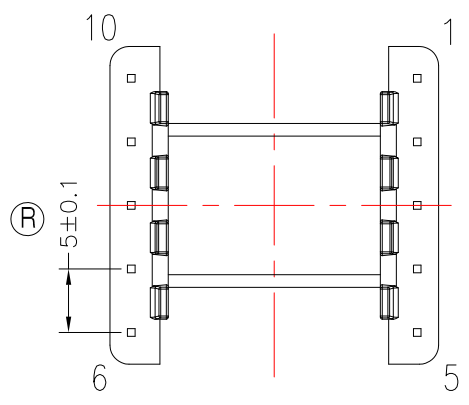
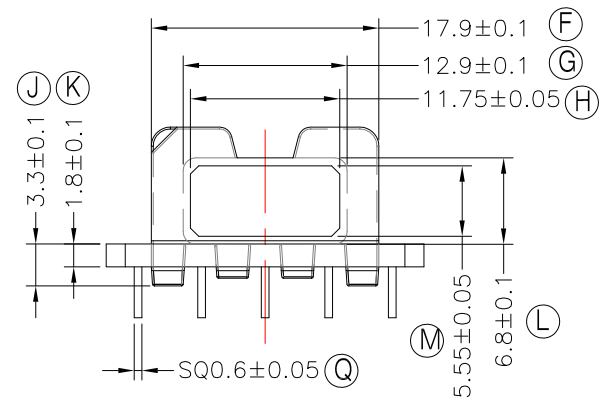
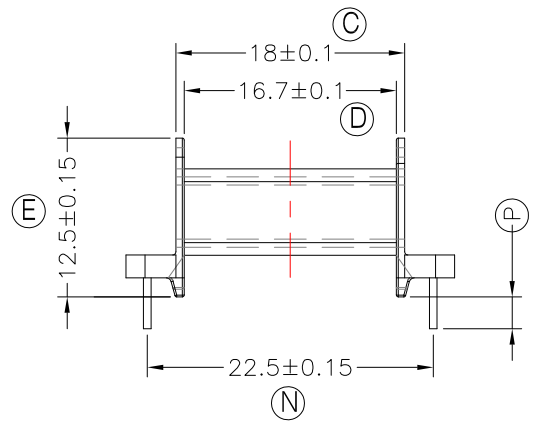
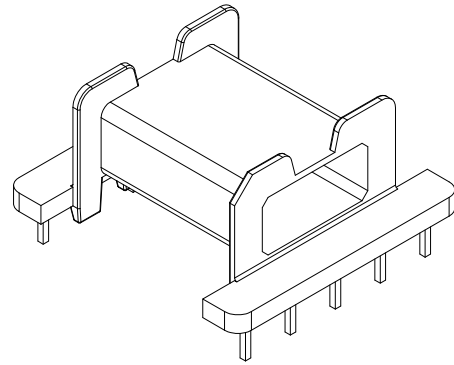
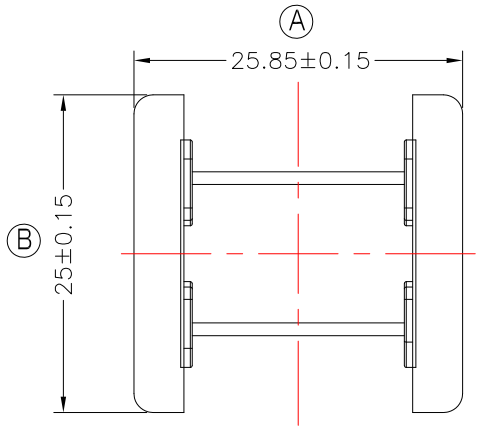


TRANSFORMER BOBBIN  
INDUSTRIAL CO.,LTD.

Tel : 86-769-88789999 Fax : 86-769-88789989  
http:// tbi-tw.com e-mail : tb6688@ms46.hinet.net

REVISIONS

REV	SYM	DRAFTER	CHECKER	DATE
1		H.X.DUAN	W.H.HSU	06/01/10
2				
3				



DWG NO.	EFD25-10P-TH-5.0-B5-11					
PART NO.	MATERIAL (BOBBIN)	MATERIAL (TERMINAL)	TERMINAL (PLATING)	PIN ALLOCATION	NOTE	
TBI-207-02251.1106	PM-9630	CP WIRE	Sn	ALL PIN (P) = 2.5±0.2		
TBI-207-02251.1116	PM-9630	CP WIRE	Sn	ALL PIN (P) = 3.05±0.2	H	
TBI-207-02251.1126	PM-9630	CP WIRE	Sn	CUT PIN #6,7,8,10 (P) = 2.5±0.2		
TBI-207-02251.1136	PM-9630	CP WIRE	Sn	ALL PIN (P) = 3.5±0.2		
TBI-207-02251.1146	PM-9630	CP WIRE	Sn	CUT PIN#3,8 (P) = 3.5±0.2		
	TOLERANCE: .X±0.15 .XX±0.10 .XXX±0.05			UNIT : m / m	SCALE 1 : 1	

Finish: 1.PB wire Immersion Sn on terminal : Thickness:Sn plating,100,5 μ m (200 μ inches) min,Base nickel 0.625 μ m (25 μ inches) min.  
2.CP wire Immersion Sn on terminal : Thickness:Sn plating,100,5 μ m (200 μ inches) min.  
3. Coplanarity deviation: 0.10 mm (0.004 inches) max.

REV	1
-----	---