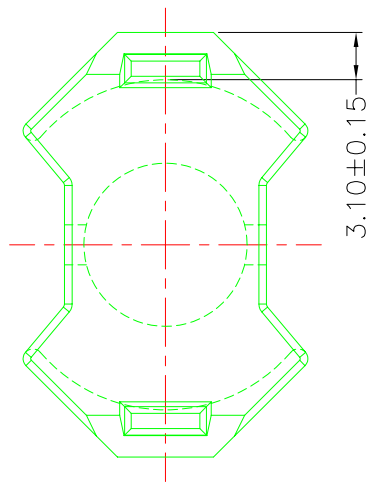
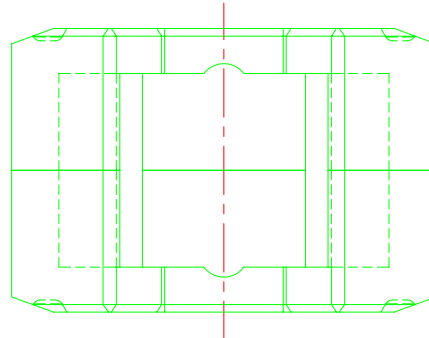
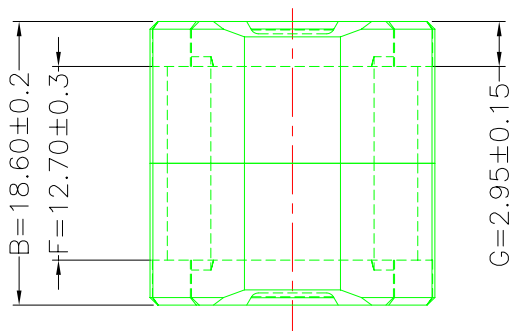
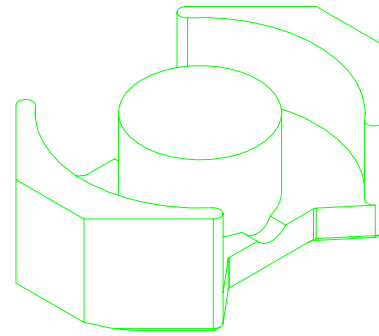
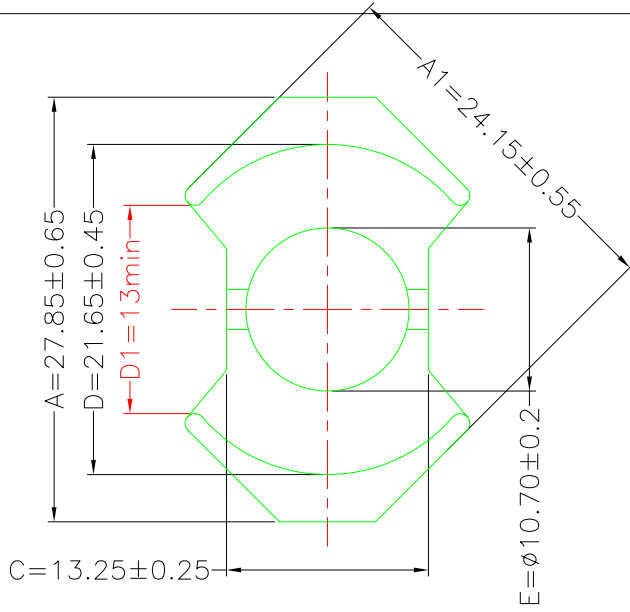


A-CORE
ELECTRICAL CO.

A-CORE JIANGMEN ELECTRONICS CO.,LTD
 江门安磁电子有限公司
 Tel: 86-750-3867791 Fax : 86-750-3867787

REVISIONS				
REV	SYM	DRAFTER	CHECKER	DATE
1		S.Y.TANG	G.F.YANG	12/20/08
2				
3				

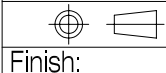


$A_e=98\text{mm}^2$
 $L_e=44\text{mm}$
 $C1=0.449\text{mm}^{-1}$

DWG NO.	RM10/18.6 CORE				
PART NO.	MATERIAL (BOBBIN)	MATERIAL (TERMINAL)	TERMINAL (PLATING)	PIN ALLOCATION	NOTE
RM10/18.6	JPP-44A				
RM10/18.6	JPP-95				

UNIT : m/m

SCALE 2:1



Finish:

REV 1

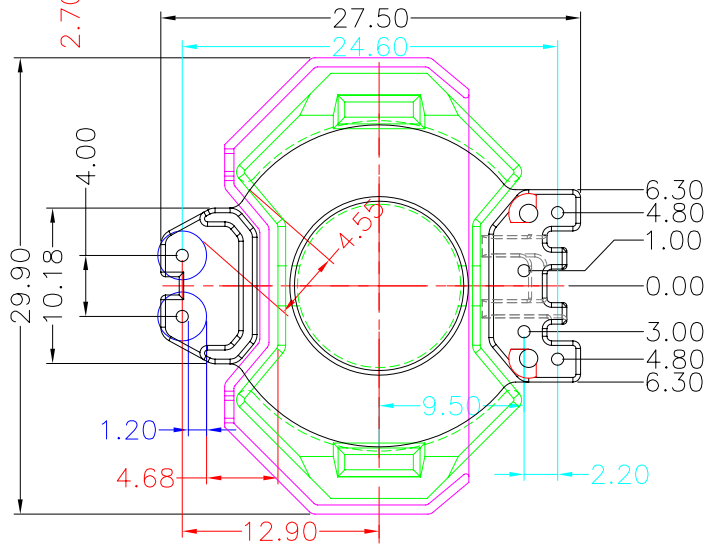
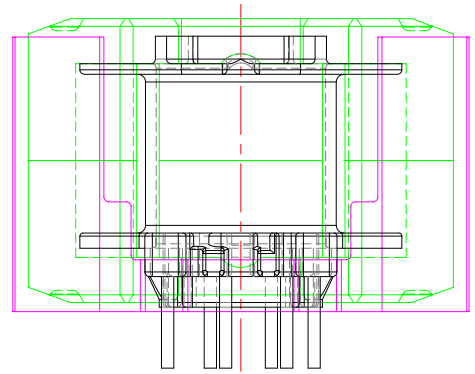
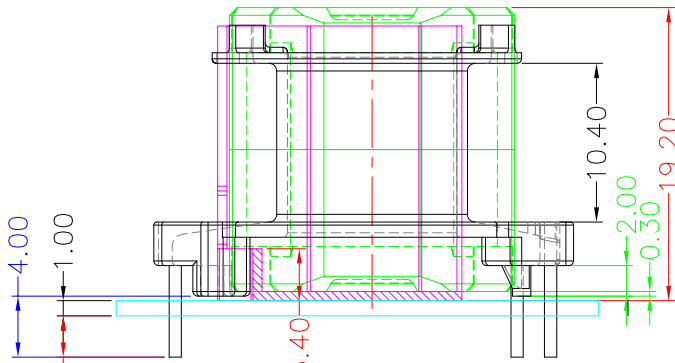
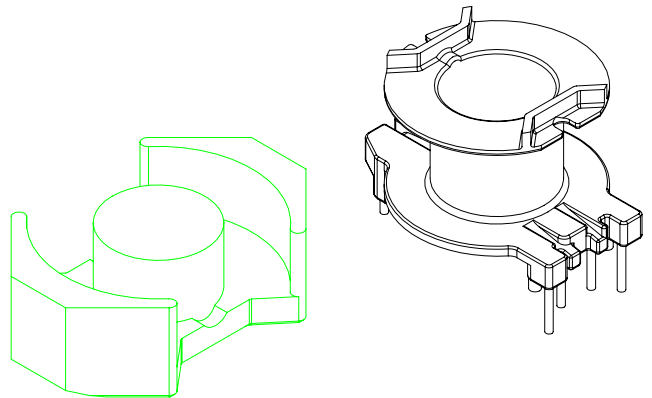
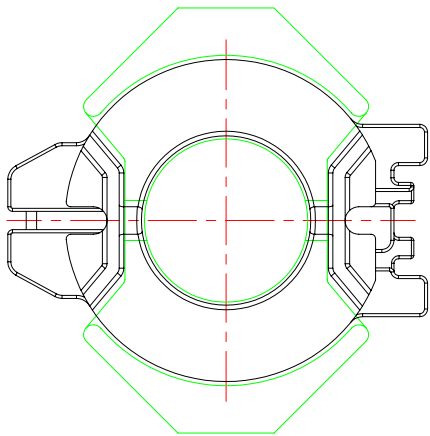


**TRANSFORMER BOBBIN
INDUSTRIAL CO.,LTD.**

Tel : 86-769-88789999 Fax : 86-769-88789989
 http:// tbi-tw.com e-mail : tb6688@ms46.hinet.net

REVISIONS

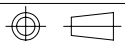
REV	SYM	DRAFTER	CHECKER	DATE
△2		G.F.YANG	W.H.HSU	04/14/09
△3		G.F.YANG	W.H.HSU	05/22/09
△4		X.H.GU	G.F.YANG	11/19/09



DWG NO. RM10-18.6-6P-TH-H-12

PART NO.	MATERIAL (BOBBIN)	MATERIAL (TERMINAL)	TERMINAL (PLATING)	PIN ALLOCATION	NOTE
----------	-------------------	---------------------	--------------------	----------------	------

TBI-208-04081.1206	PM-9820(BK)	C.P WIRE	Sn	ALL PIN	
--------------------	-------------	----------	----	---------	--



TOLERANCE: 0<L<=4:±0.1 4<L<=16:±0.2 16<L<=63:±0.3

UNIT : m / m

SCALE 1 : 1

REV	4
-----	---