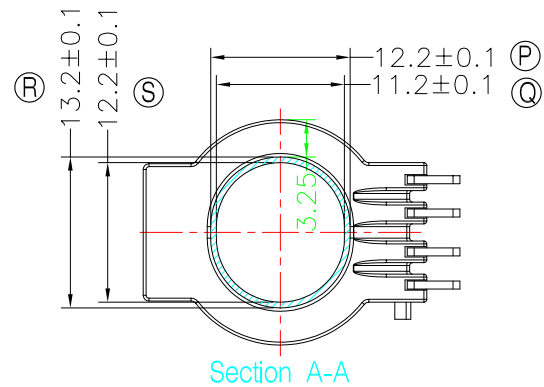
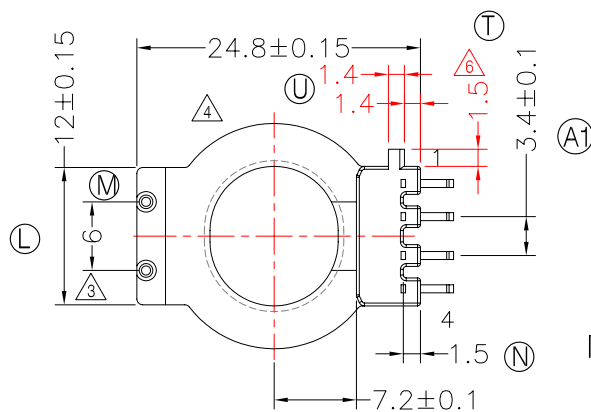
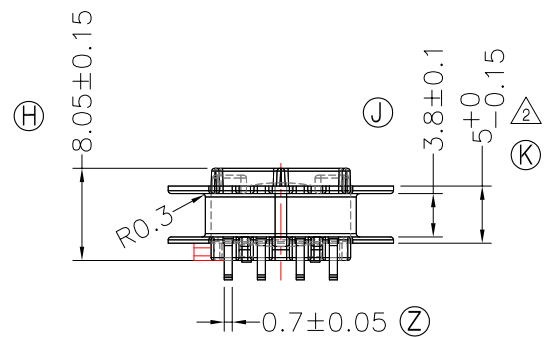
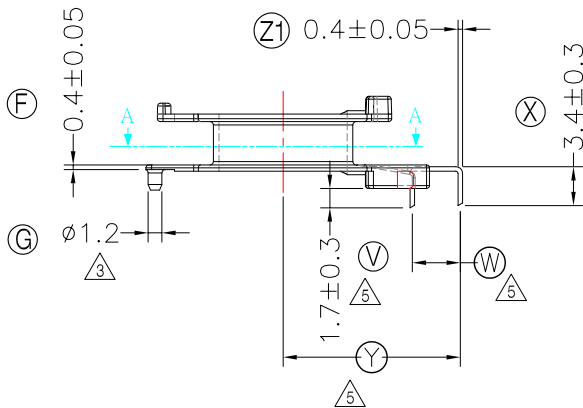
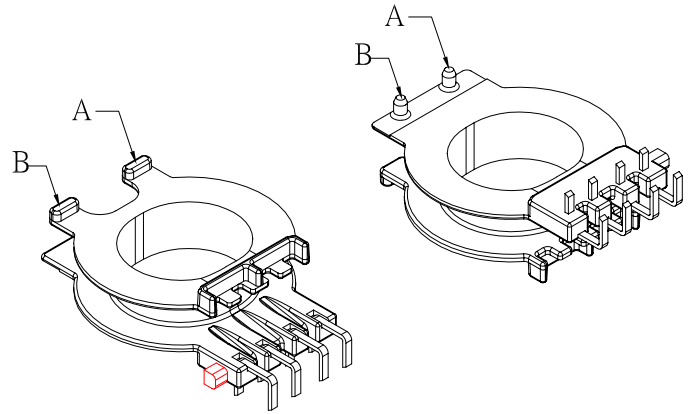
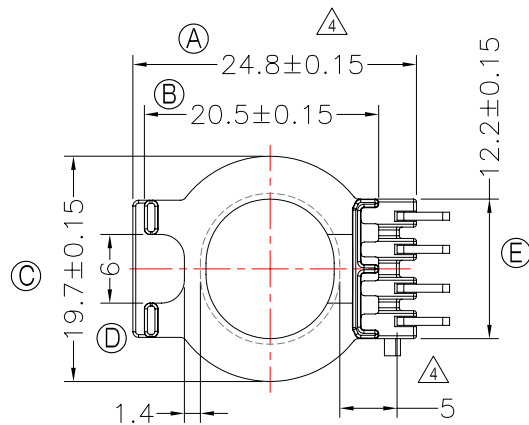


REVISIONS				
REV	SYM	DRAFTER	CHECKER	DATE
△4		G.F.YANG	W.H.HSU	03/25/10
△5		G.F.YANG	W.H.HSU	04/12/10
△6		G.F.YANG	W.H.HSU	07/14/10



NOTE:

任一點的強度為1.5kg MIN 其中上下葉片凸點 A,B處為0.8kg MIN

WINDING SPACE: 3.8mm\*3.25mm=12.35mm<sup>2</sup>

DWG NO.	ATQ23.2-10.2-4P-THT-J-11				
PART NO.	MATERIAL (BOBBIN)	MATERIAL (TERMINAL)	TERMINAL (PLATING)	PIN ALLOCATION	NOTE
TBI-238-10091.1106	PM-9630	CP WIRE	Sn	ALL PIN (W)=4.2±0.2 (Y)=15.5±0.3	S
TBI-238-10091.1116	PM-9630	CP WIRE	Sn	ALL PIN (W)=3.7±0.2 (Y)=15±0.3	H
TOLERANCE: .XX±0.1 .XXX±0.05					
UNIT : m / m				SCALE 1 : 1	

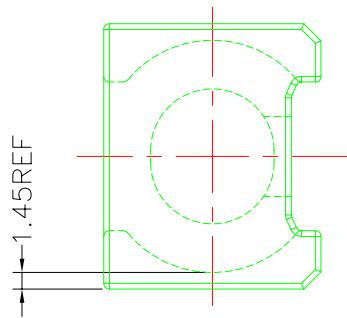
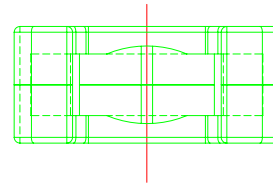
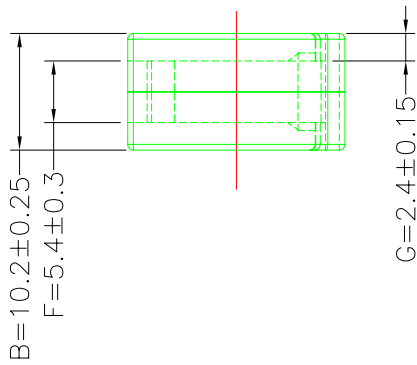
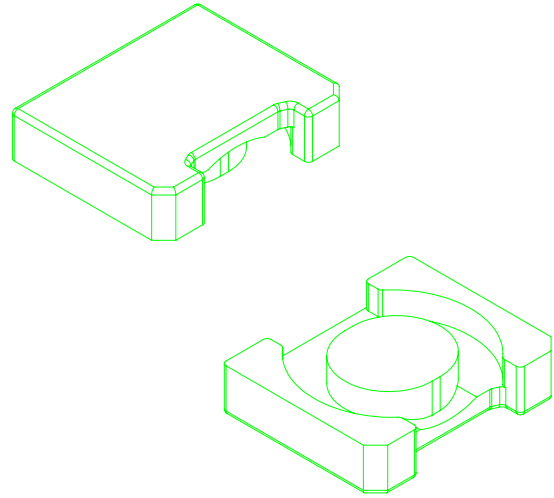
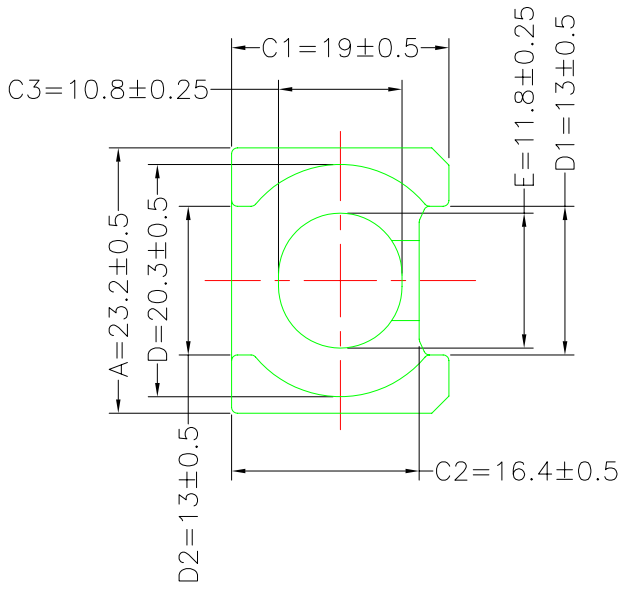
Finish: 1. PB wire Immersion Sn on terminal : Thickness:Sn plating,100,5 μm (200 μ inches) min,Base nickel 0.625 μm (25 μ inches) min.  
 2. CP wire Immersion Sn on terminal : Thickness:Sn plating,100,5 μm (200 μ inches) min.  
 3. Coplanarity deviation: 0.10 mm (0.004 inches) max.

REV 6

**A-CORE**  
ELECTRICAL CO.

A-CORE JIANGMEN ELECTRONICS CO.,LTD  
江門安磁電子有限公司  
Tel : 86-750-3867791 Fax : 86-750-3867787

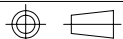
REVISIONS				
REV	SYM	DRAFTER	CHECKER	DATE
1		YAN.TANG	G.F.YANG	09/21/09
2				
3				



### Core Set Parameters

$A_e=99\text{mm}^2$   
 $L_e=31.5\text{mm}$   
 $C_1=0.318\text{mm}^{-1}$   
 $V_e=3118.5\text{mm}^3$

DWG NO.	ATQ23.2/10.2 CORE				
PART NO.	MATERIAL (BOBBIN)	MATERIAL (TERMINAL)	TERMINAL (PLATING)	PIN ALLOCATION	NOTE
ATQ23.2/10.2	JPP-44A				
ATQ23.2/10.2	JPP-95				



TOLERANCE: .XX±0.1 .XXX±0.05

UNIT : m/m

SCALE 1 : 1

REV 1

**A-CORE**

A-CORE JIANGMEN ELECTRONICS CO.,LTD  
江門安磁電子有限公司

**TBI**

TRANSFORMER BOBBIN  
INDUSTRIAL CO.,LTD.

ELECTRICAL CO. Tel : 86-750-3867791 Fax : 86-750-3867787

Tel : 86-769-88789999 Fax : 86-769-88789989

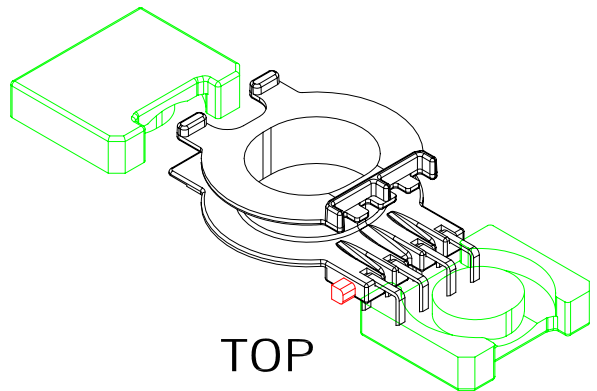
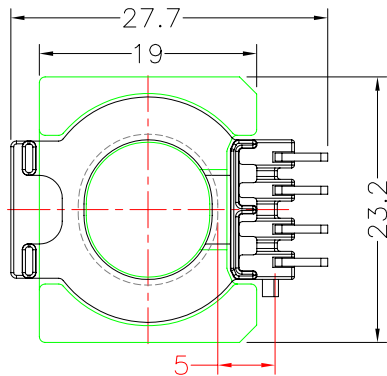
e-mail : sales@acore-ferrite.com

http:// tbi-tw.com e-mail : tb6688@ms46.hinet.net

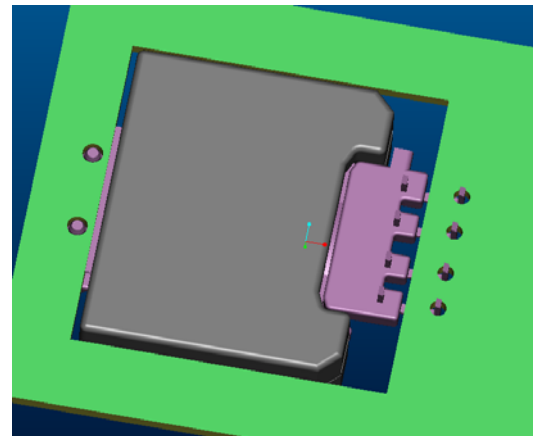
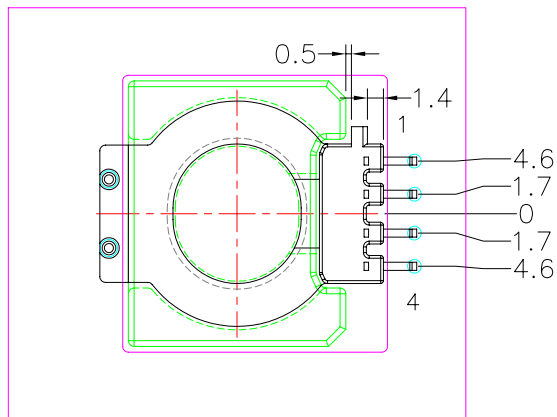
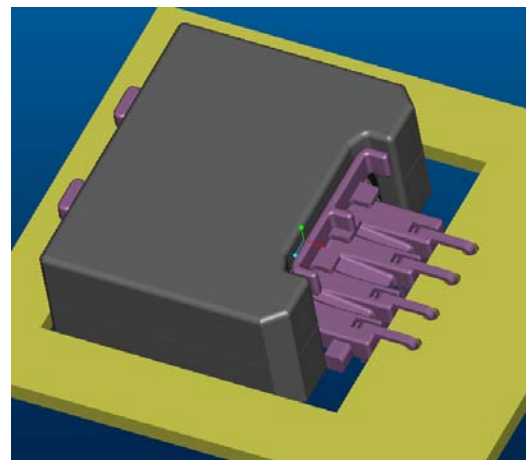
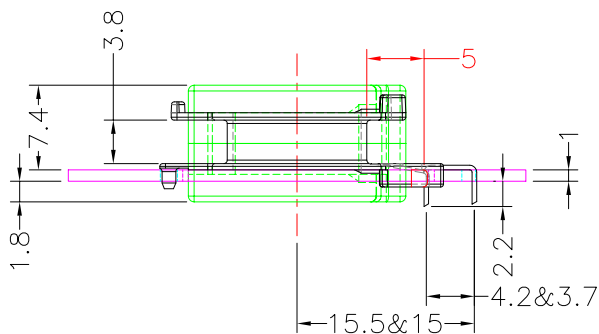
REVISIONS

REV	SYM	DRAFTER	CHECKER	DATE
4		G.F.YANG	W.H.HSU	03/25/10
5		G.F.YANG	W.H.HSU	04/12/10
6		G.F.YANG	W.H.HSU	07/13/10

TOP



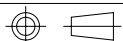
TOP



BOTTOM

BOTTOM

ITEM	PART NO.	MATERIAL	DWG NO.	Core Set Parameters
CORE	ATQ23.2/10.2	JPP-44A		$A_e=99\text{mm}^2$ $L_e=31.5\text{mm}$ $C_1=0.318\text{mm}^{-1}$ $V_e=3118.5\text{mm}^3$
CORE	ATQ23.2/10.2	JPP-95		
BOBBIN	TBI-238-10091.11XX		ATQ23.2-10.2-4P-THT-J-11	



UNIT : m / m

SCALE 1 : 1

REV

6