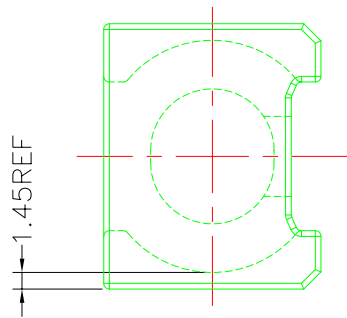
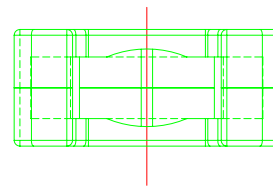
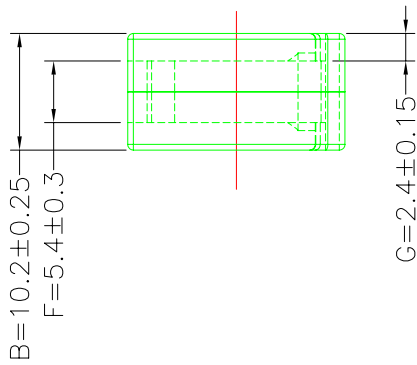
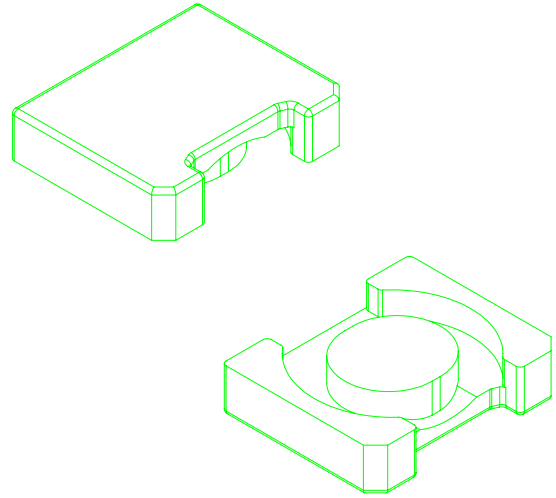
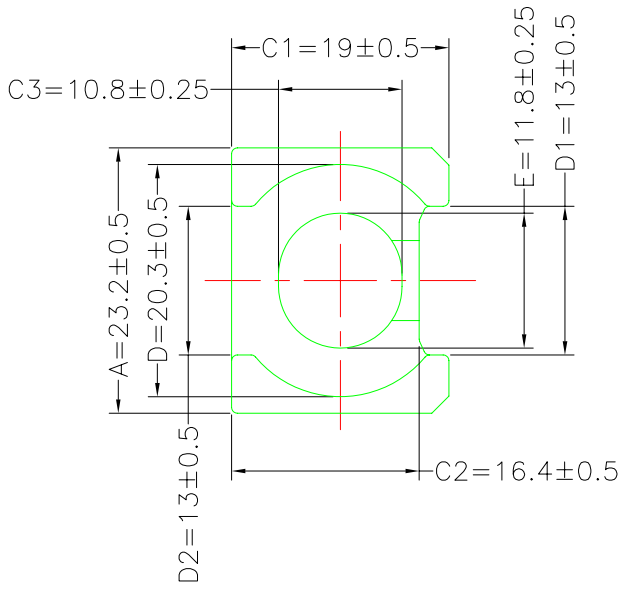


A-CORE
ELECTRICAL CO.

A-CORE JIANGMEN ELECTRONICS CO.,LTD
江門安磁電子有限公司
Tel : 86-750-3867791 Fax : 86-750-3867787

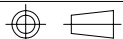
REVISIONS				
REV	SYM	DRAFTER	CHECKER	DATE
1		YAN.TANG	G.F.YANG	09/21/09
2				
3				



Core Set Parameters

$A_e=99\text{mm}^2$
 $L_e=31.5\text{mm}$
 $C_1=0.318\text{mm}^{-1}$
 $V_e=3118.5\text{mm}^3$

DWG NO.	ATQ23.2/10.2 CORE				
PART NO.	MATERIAL (BOBBIN)	MATERIAL (TERMINAL)	TERMINAL (PLATING)	PIN ALLOCATION	NOTE
ATQ23.2/10.2	JPP-44A				
ATQ23.2/10.2	JPP-95				



TOLERANCE: .XX±0.1 .XXX±0.05

UNIT : m/m

SCALE 1 : 1

REV 1

A-CORE

A-CORE JIANGMEN ELECTRONICS CO.,LTD
江門安磁電子有限公司

TBI

TRANSFORMER BOBBIN
INDUSTRIAL CO.,LTD.

ELECTRICAL CO. Tel : 86-750-3867791 Fax : 86-750-3867787

Tel : 86-769-88789999 Fax : 86-769-88789989

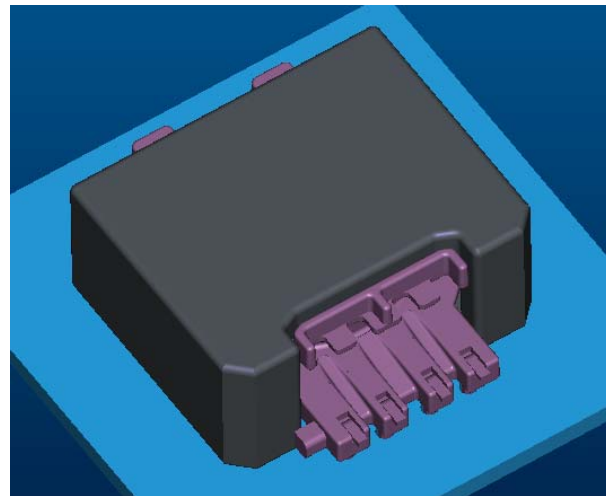
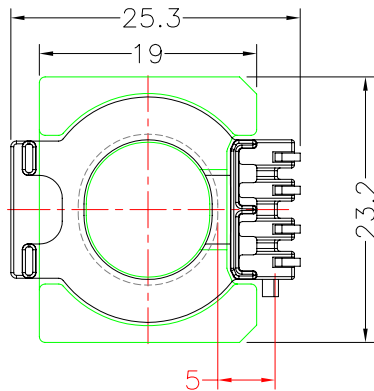
e-mail : sales@acore-ferrite.com

http://tbi-tw.com e-mail : tb6688@ms46.hinet.net

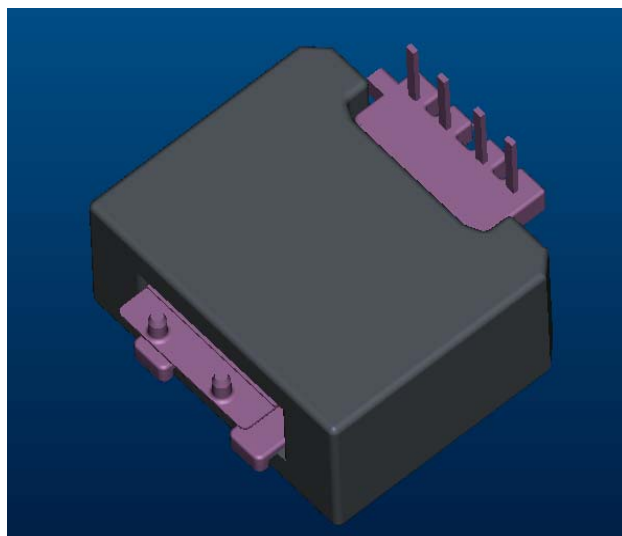
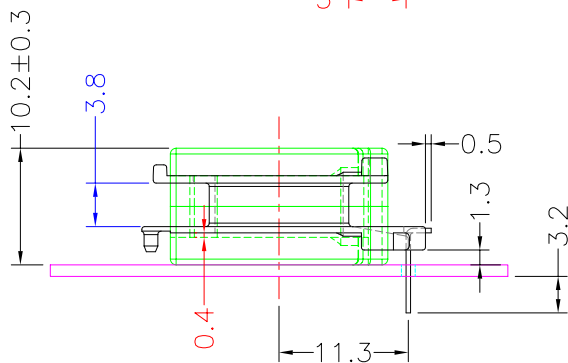
REVISIONS

REV	SYM	DRAFTER	CHECKER	DATE
1		H.X.DUAN	G.F.YANG	11/01/13
2				
3				

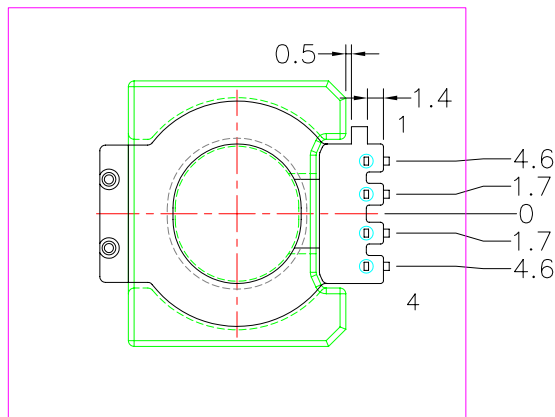
TOP



TOP

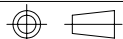


BOTTOM



BOTTOM

ITEM	PART NO.	MATERIAL	DWG NO.	Core Set Parameters
CORE	ATQ23.2/10.2	JPP-44A		$A_e=99\text{mm}^2$ $L_e=31.5\text{mm}$ $C_1=0.318\text{mm}^{-1}$ $V_e=3118.5\text{mm}^3$
CORE	ATQ23.2/10.2	JPP-95		
BOBBIN	TBI-238-10321.11XX		ATQ23.2-10.2-4P-THL-C2-11	



UNIT : m/m

SCALE 1 : 1

REV 1