

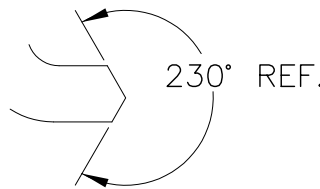
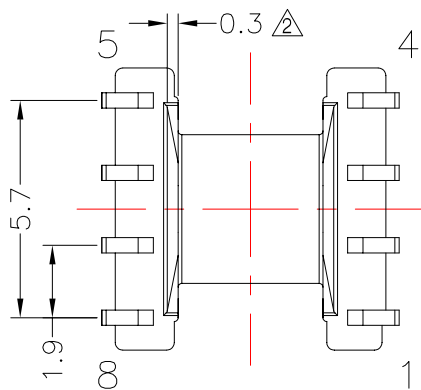
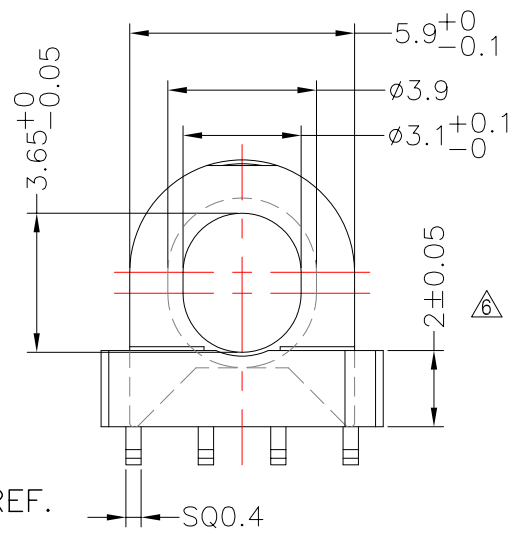
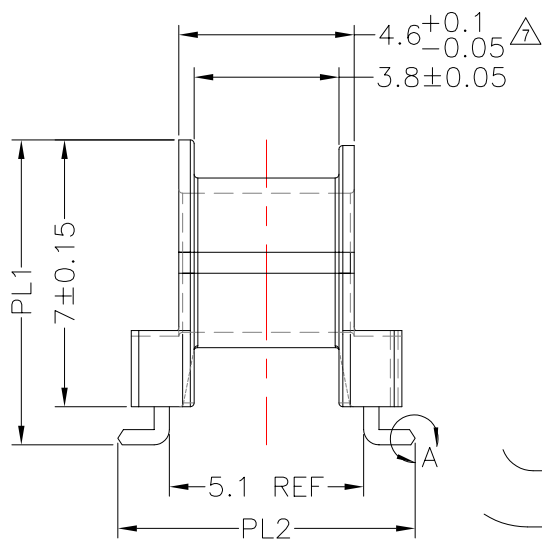
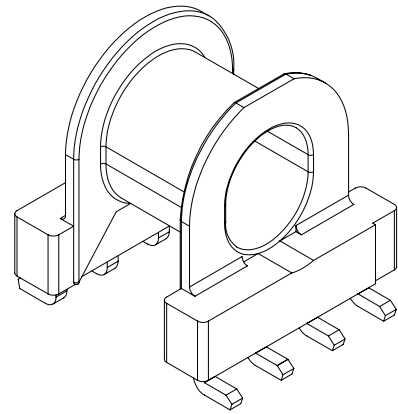
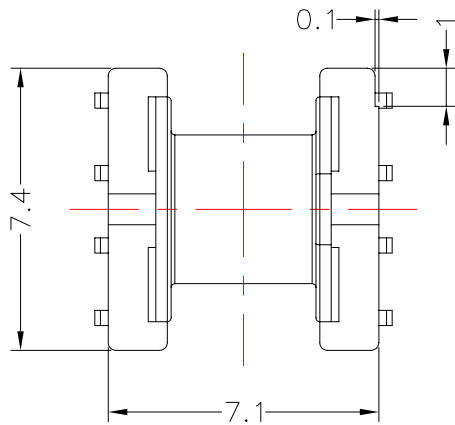


TRANSFORMER BOBBIN
INDUSTRIAL CO.,LTD.

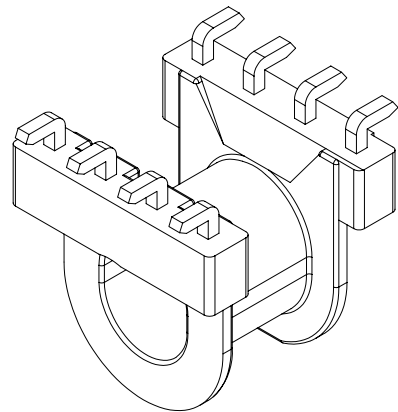
Tel : 86-769-88789999 Fax : 86-769-88789989
http:// tbi-tw.com e-mail : tb6688@ms46.hinet.net

REVISIONS

REV	SYM	DRAFTER	CHECKER	DATE
5		T.S.LII	W.H.HSU	01/31/07
6		YAN.TANG	W.H.HSU	10/11/07
7		YAN.TANG	G.F.YANG	03/24/08



DETAIL:A
PATENTED
01/31/07



DWG NO. EPX6-8P-L-1.9-H-1

PART NO.	MATERIAL (BOBBIN)	MATERIAL (TERMINAL)	TERMINAL (PLATING)	PIN ALLOCATION	NOTE
TBI-103-07081.103	PM-9630	PB	Sn	ALL PIN PL1=8.0±0.15 PL2=7.8±0.15	
TBI-103-07081.113	PM-9630	PB	Sn	ALL PIN PL1=8.3±0.15 PL2=7.85±0.15	H.C
TBI-103-07081.123	PM-9630	PB	Sn	ALL PIN PL1=8.2±0.15 PL2=7.85±0.15	

TOLERANCE: 0<L<4:±0.1 4<L<16:±0.2 16<L<63:±0.3 ANGLES:±1° UNIT : m / m SCALE 5 : 1

Finish: 1. PB wire Immersion Sn on terminal : Thickness:Sn plating,100,5 μm (200 μ inches) min,Base nickel 0.625 μm (25 μ inches) min.
2. CP wire Immersion Sn on terminal : Thickness:Sn plating,100,5 μm (200 μ inches) min.
3. Coplanarity deviation: 0.10 mm (0.004 inches) max.

REV 7