

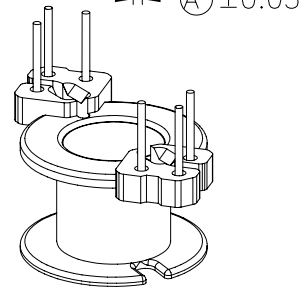
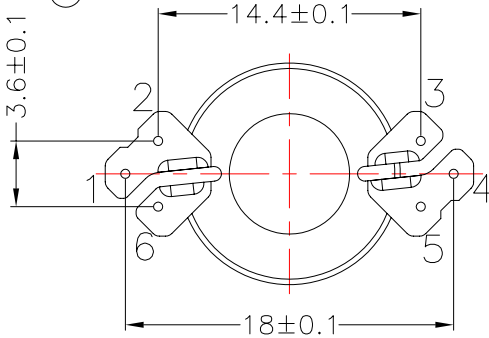
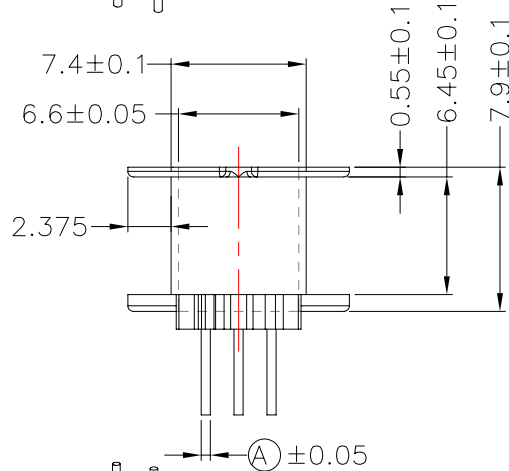
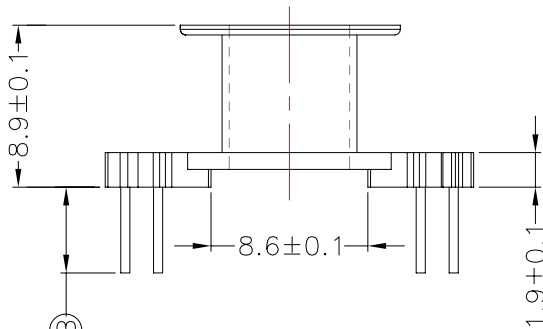
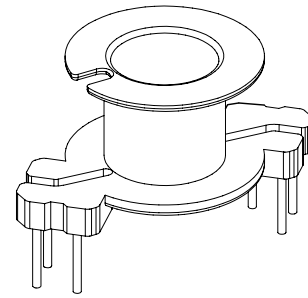
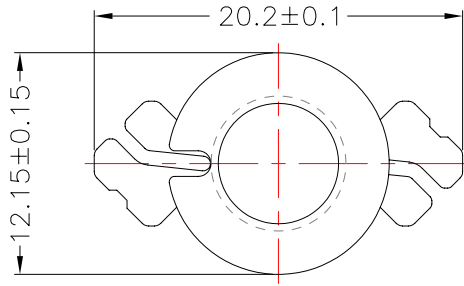


TRANSFORMER BOBBIN INDUSTRIAL CO.,LTD.

Tel : 86-769-88789999 Fax : 86-769-88789989  
 http:// tbi-tw.com e-mail : tb6688@ms46.hinet.net

REVISIONS

REV	SYM	DRAFTER	CHECKER	DATE
△5		T.S.LII	W.H.HSU	06/02/03
△6		T.S.LII	W.H.HSU	07/21/06
△7		YAN.TANG	W.H.HSU	04/11/07



Winding Space=6.45\*2.375=15.32mm<sup>2</sup>

DWG NO. RM6-6P-TH-D-1

PART NO.	MATERIAL (BOBBIN)	MATERIAL (TERMINAL)	TERMINAL (PLATING)	PIN ALLOCATION	NOTE
TBI-208-02041.106	PM-9630	CP WIRE	Sn	ALL PIN , (A) =SQ0.4 (B) =4.7±0.3	
TBI-208-02041.116	PM-9630	CP WIRE	Sn	ALL PIN , (A) =Φ 0.5 (B) =4.7±0.3	H
TBI-208-02041.126	PM-9630	CP WIRE	Sn	PIN CUT #1,4 , (A) = Φ 0.5 (B) =4.7±0.3	
△ TBI-208-02041.136	PM-9630	CP WIRE	Sn	ALL PIN , (A) = Φ 0.5 (B) =5.0±0.3	
△ TBI-208-02041.146	PM-9630	CP WIRE	Sn	CUT PIN #1, (A) =SQ0.4 (B) =4.7±0.3	
△ TBI-208-02041.156	PM-9630	CP WIRE	Sn	CUT PIN #1,4, (A) =SQ0.4 (B) =4.7±0.3	
TBI-208-02041.166	PM-9630	CP WIRE	Sn	CUT PIN#6 (A) =Φ 0.5 (B) =4.7±0.3	
TBI-208-02041.176	PM-9630	CP WIRE	Sn	CUT PIN #1,3,5 (A) =SQ0.4 (B) =4.7±0.3	
TBI-208-02041.186	PM-9630	CP WIRE	Sn	CUT PIN #1,4,5 (A) =SQ0.4 (B) =4.7±0.3	
TBI-208-02041.196	PM-9630	CP WIRE	Sn	CUT PIN#1, (A) =Φ 0.5 (B) =4.7±0.3	
TBI-208-02041.1A6	PM-9630	CP WIRE	Sn	CUT PIN#5 (A) = Φ 0.5 (B) =5.0±0.3	
TBI-208-02041.1B6	PM-9630	CP WIRE	Sn	ALL PIN (A) = Φ 0.5 (B) =6.0±0.3	
TBI-208-02041.1C6	PM-9630	CP WIRE	Sn	CUT PIN#5 (A) = Φ 0.5 (B) =6.0±0.3	
TBI-208-02041.1D6	PM-9630	CP WIRE	Sn	CUT PIN#6 (A) = Φ 0.5 (B) =5.0±0.3	
TBI-208-02041.1E6	PM-9630	CP WIRE	Sn	CUT PIN#6 (A) = Φ 0.5 (B) =6.0±0.3	

TOLERANCE: .X±0.15 .XX±0.10 .XXX±0.05 UNIT : m / m SCALE 1 : 1

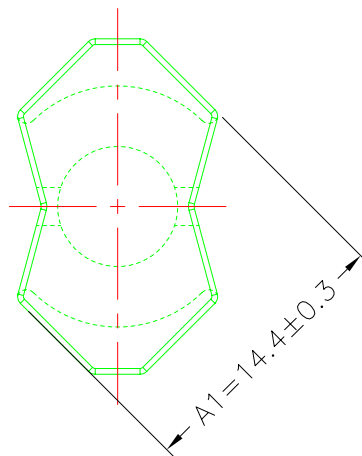
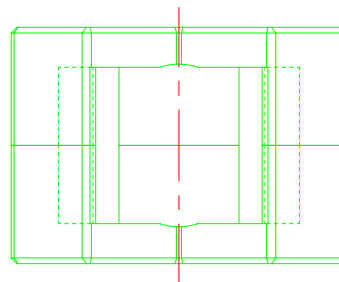
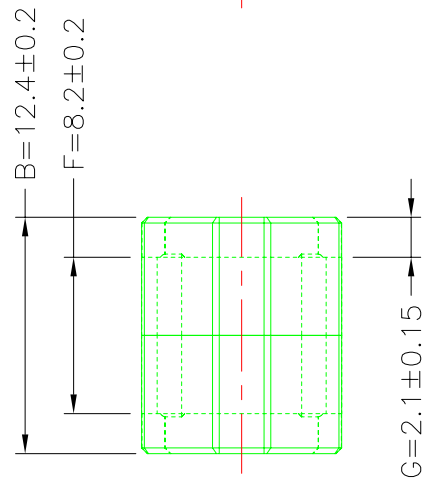
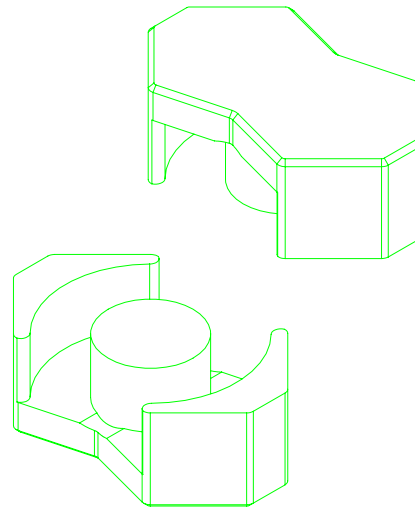
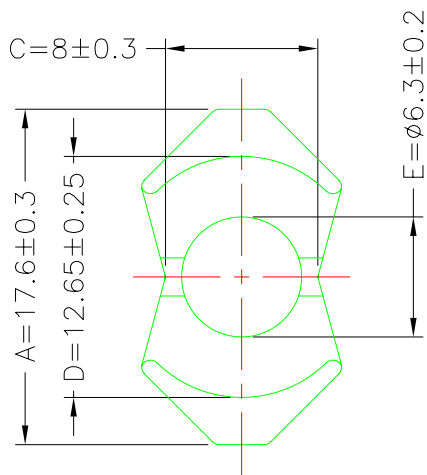
Finish: 1. PB wire Immersion Sn on terminal : Thickness:Sn plating,100,5 μm (200 μ inches) min,Base nickel 0.625 μm (25 μ inches) min.  
 2. CP wire Immersion Sn on terminal : Thickness:Sn plating,100,5 μm (200 μ inches) min.  
 3. Coplanarity deviation: 0.10 mm (0.004 inches )max.

REV 7

**A-CORE**  
ELECTRICAL CO.

A-CORE JIANGMEN ELECTRONICS CO.,LTD  
 江门安磁电子有限公司  
 Tel: 86-750-3867791 Fax : 86-750-3867787

REVISIONS				
REV	SYM	DRAFTER	CHECKER	DATE
①		X.H.GU	G.F.YANG	02/15/12
②				
③				



### Core Set Parameters

$A_e = 36.6 \text{mm}^2$   
 $L_e = 28.6 \text{mm}$   
 $C1 = 0.78 \text{mm}^{-1}$   
 $V_e = 1046.76 \text{mm}^3$

DWG NO.	RM6/12.4-CORE				
PART NO.	MATERIAL (BOBBIN)	MATERIAL (TERMINAL)	TERMINAL (PLATING)	PIN ALLOCATION	NOTE
RM6/12.4	JPP-44A				
RM6/12.4	JPP-95				
Finish:	TOLERANCE: $0 < L \leq 4: \pm 0.1$ $4 < L \leq 16: \pm 0.2$ $16 < L \leq 63: \pm 0.3$			UNIT : m / m	SCALE 1 : 1
				REV	1

**A-CORE**A-CORE JIANGMEN ELECTRONICS CO.,LTD  
江門安磁電子有限公司**TBI**TRANSFORMER BOBBIN  
INDUSTRIAL CO.,LTD.

ELECTRICAL CO. Tel : 86-750-3867791 Fax : 86-750-3867787

Tel : 86-769-88789999 Fax : 86-769-88789989

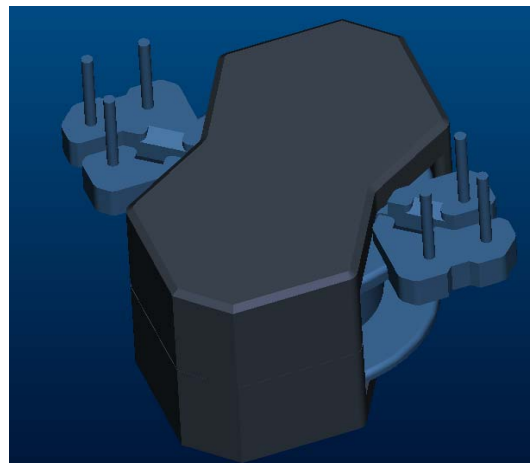
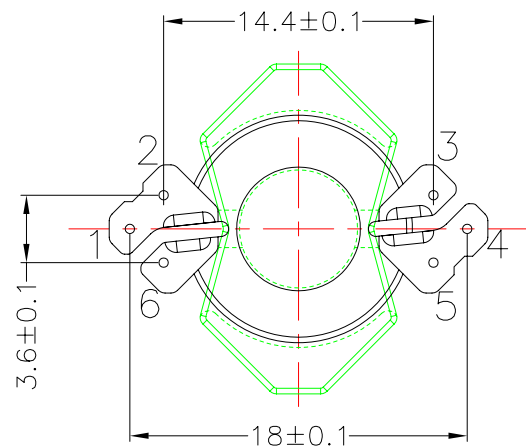
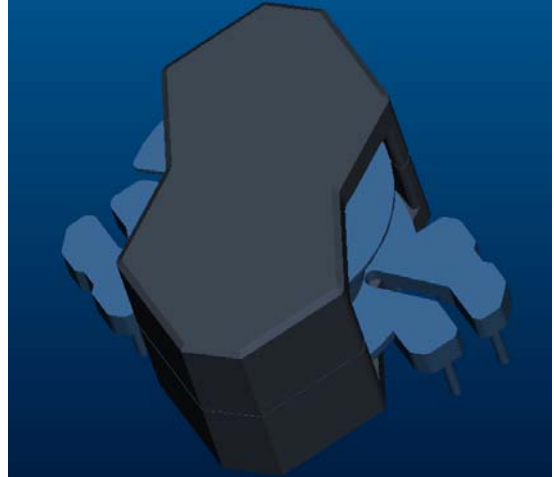
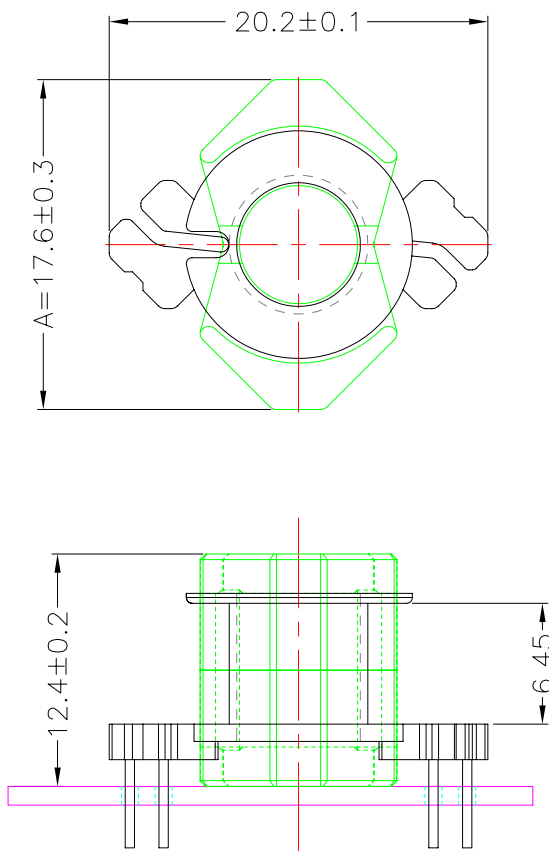
e-mail : sales@acore-ferrite.com

http:// tbi-tw.com e-mail : tb6688@ms46.hinet.net

## REVISIONS

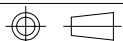
REV	SYM	DRAFTER	CHECKER	DATE
△1		F.LU	G.F.YANG	07/11/13
△2				
△3				

## TOP



## BOTTOM

ITEM	PART NO.	MATERIAL	DWG NO.	Core Set Parameters
CORE	RM6/12.4	JPP-44A		$A_e = 36.6\text{mm}^2$ $L_e = 28.6\text{mm}$ $C_1 = 0.78\text{mm}^{-1}$ $V_e = 1046.76\text{mm}^3$
CORE	RM6/12.4	JPP-95		
BOBBIN	TBI-208-02041.1XX		RM6-6P-TH-D-1	



UNIT : m/m

SCALE 1:1

REV 7