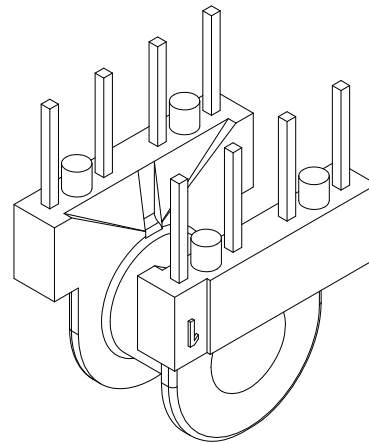
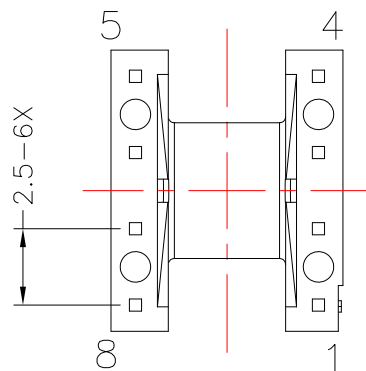
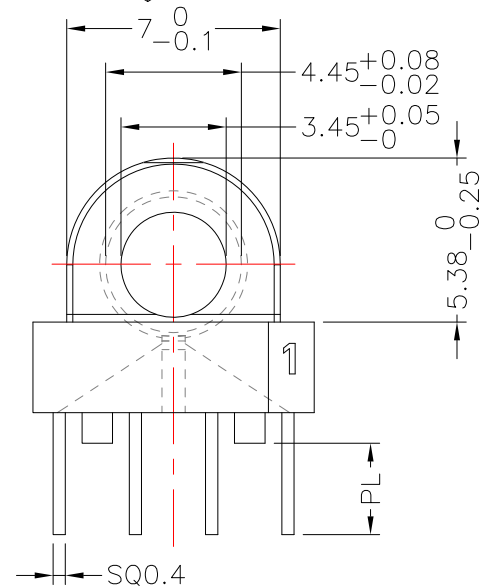
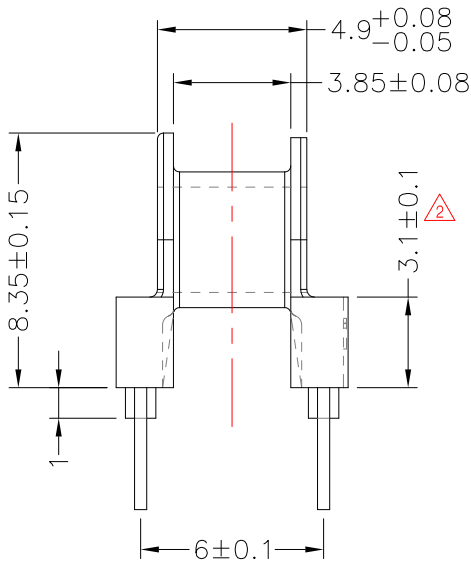
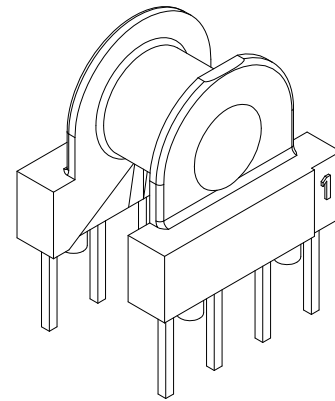
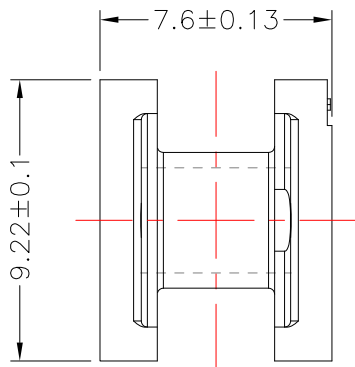




**TRANSFORMER BOBBIN  
INDUSTRIAL CO.,LTD.**

Tel : 86-769-88789999 Fax : 86-769-88789989  
 http:// tbi-tw.com e-mail : tb6688@ms46.hinet.net

REVISIONS				
REV	SYM	DRAFTER	CHECKER	DATE
①		Y.G.HSU	W.H.HSU	01/11/07
②		S.Y.TANG	W.H.HSU	07/07/07
③		S.Y.TANG	G.F.YANG	12/10/07



DWG NO.	EP7-8P-TH-2.5-H-1				
PART NO.	MATERIAL (BOBBIN)	MATERIAL (TERMINAL)	TERMINAL (PLATING)	PIN ALLOCATION	NOTE
TBI-203-08081.103	PM-9630	P.B ③	Sn	ALL PIN PL=3.0±0.3	
TBI-203-08081.113	PM-9630	P.B ③	Sn	CUT PIN #1,4,5,8 PL=3.0±0.3	
TBI-203-08081.123	PM-9630	P.B	Sn	ALL PIN PL=4.0±0.2	
TBI-203-08081.133	PM-9630	P.B	Sn	CUT PIN #3 PL=3.0±0.2	
	TOLERANCE: .X±0.15 .XX±0.10 .XXX±0.05			UNIT : m / m	SCALE 1 : 1

Finish: 1. PB wire Immersion Sn on terminal : Thickness:Sn plating,100%,5 μm (200 μ inches) min,Base nickel 0.625 μm (25 μ inches) min.  
 2. CP wire Immersion Sn on terminal : Thickness:Sn plating,100%,5 μm (200 μ inches) min.  
 3. Coplanarity deviation: 0.10 mm (0.004 inches) max.

REV	3
-----	---