

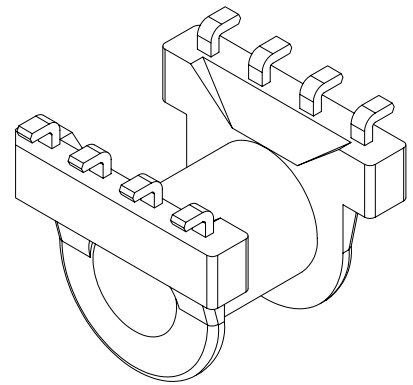
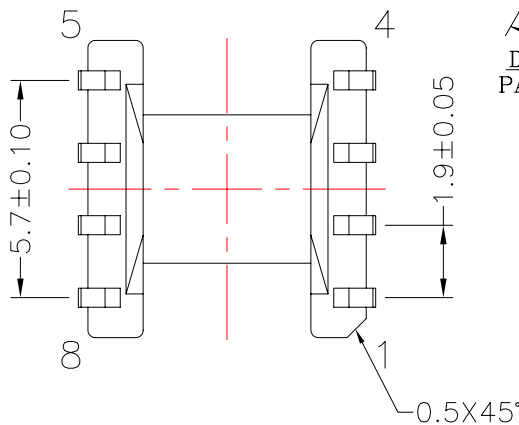
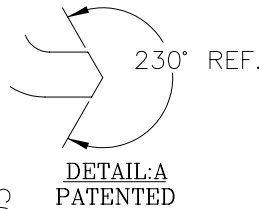
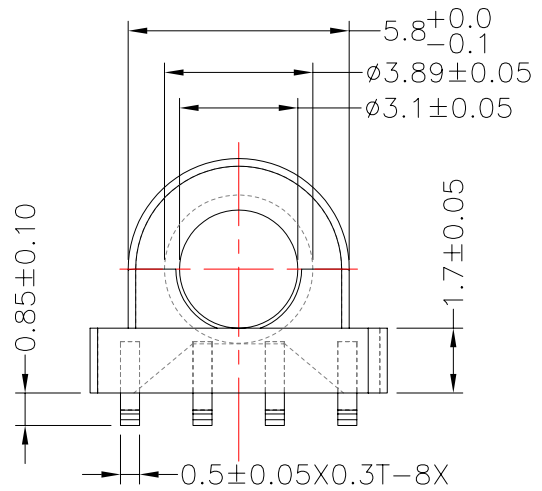
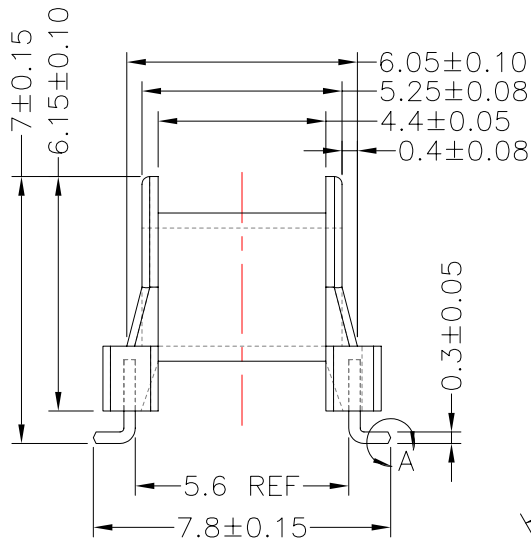
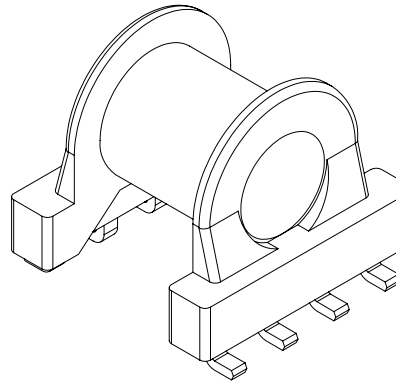
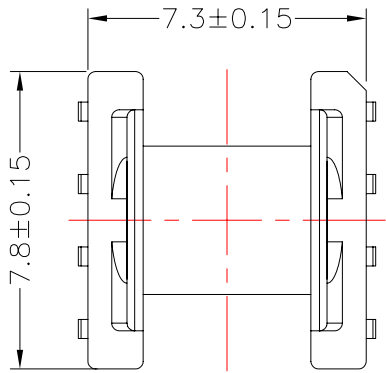


TRANSFORMER BOBBIN INDUSTRIAL CO.,LTD.

Tel : 86-769-88789999 Fax : 86-769-88789989
 http:// tbi-tw.com e-mail : tb6688@ms46.hinet.net

REVISIONS

REV	SYM	DRAFTER	CHECKER	DATE
1		YAN.TANG	G.F.YANG	09/24/09
2				
3				



NOTE:

- 1. 焊前拉力要求: 1.0 Kg Min.
- 2. 焊錫溫度380~400度, 時間1~2S
- 3. 焊後拉拔力要求: 每PCS 單Pin 0.6kg Min, 及全Pin平均值1.0kg Min

DWG NO. EP5.5-7.5-8P-L-1.9-B0-11

PART NO.	MATERIAL (BOBBIN)	MATERIAL (TERMINAL)	TERMINAL (PLATING)	PIN ALLOCATION	NOTE
TBI-103-01201.1103	PM-9630	PB	Sn	ALL PIN	

TOLERANCE: .X±0.15 .XX±0.10 .XXX±0.05 UNIT : m / m SCALE 5 : 1

Finish: 1. PB wire Immersion Sn on terminal : Thickness:Sn plating,100,5-12 μm (200-480 μinches) min,Base nickel 1.25-2.5 μm (50-100 μ inches) min.
 2. CP wire Immersion Sn on terminal : Thickness:Sn plating,100,5-12 μm (200-480 μinches) min.
 3. Coplanarity deviation: 0.10 mm (0.004 inches) max.

REV 1