

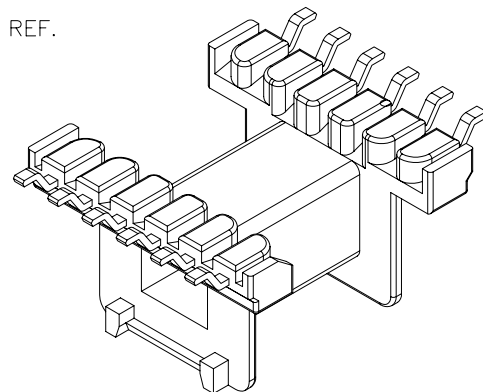
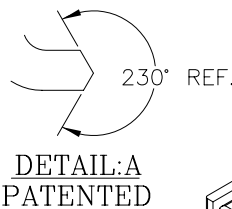
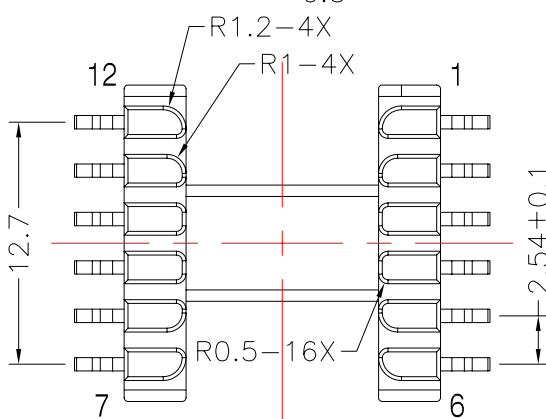
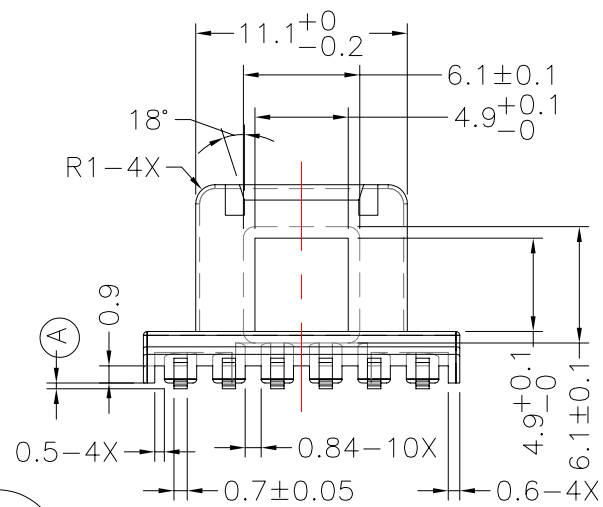
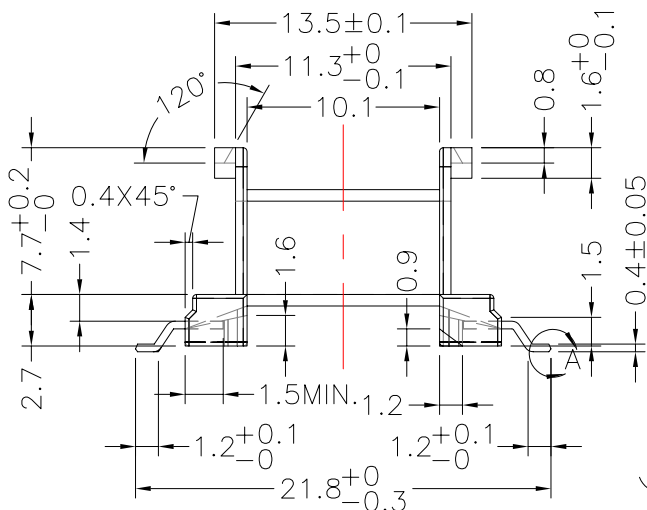
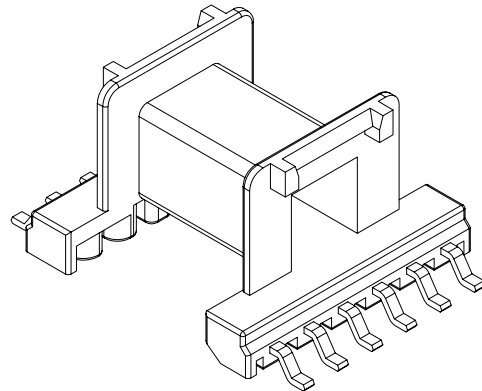
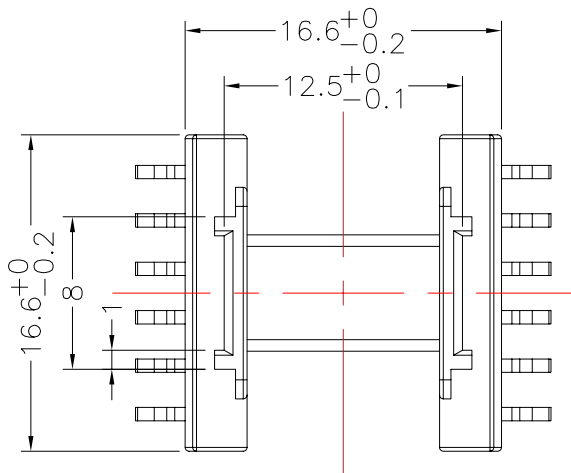


TRANSFORMER BOBBIN
INDUSTRIAL CO.,LTD.

Tel : 86-769-88789999 Fax : 86-769-88789998
http:// tbi-tw.com e-mail : tb6688@ms46.hinet.net

REVISIONS

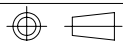
REV	SYM	DRAFTER	CHECKER	DATE
1		Y.G.HSU	W.H.HSU	05/11/07
2				
3				



Pull out force pre pin 1.0Kg min.

DWG NO. EF16-12P-GW-2.54-0F-1

PART NO.	MATERIAL (BOBBIN)	MATERIAL (TERMINAL)	TERMINAL (PLATING)	PIN ALLOCATION	NOTE
TBI-105-02061.103	PM-9630 JT	P.B	Sn	ALL PIN (A) = 0.3 MIN	
TBI-105-02061.113	PM-9630 JT	P.B	Sn	ALL PIN (A) = 1.5±0.15	
TBI-105-02061.123	PM-9630 JT	P.B	Sn	ALL PIN (A) = 1.8±0.2	
TBI-105-02061.133	PM-9630 JT	P.B	Sn	CUT PIN#2,5,8,11 (A) = 0.3 MIN	
TBI-105-02061.143	PM-9630 JT	P.B	Sn	ALL PIN (A) = 0.8±0.2	



TOLERANCE: .X±0.15 .XX±0.10 .XXX±0.05

UNIT : m / m

SCALE 1 : 1

Finish: 1. PB wire Immersion Sn on terminal : Thickness:Sn plating,100%,5 μm (200 μ inches) min,Base nickel 0.625 μm (25 μ inches) min.
2. CP wire Immersion Sn on terminal : Thickness:Sn plating,100%,5 μm (200 μ inches) min.
3. Coplanarity deviation: 0.10 mm (0.004 inches) max.

REV 1