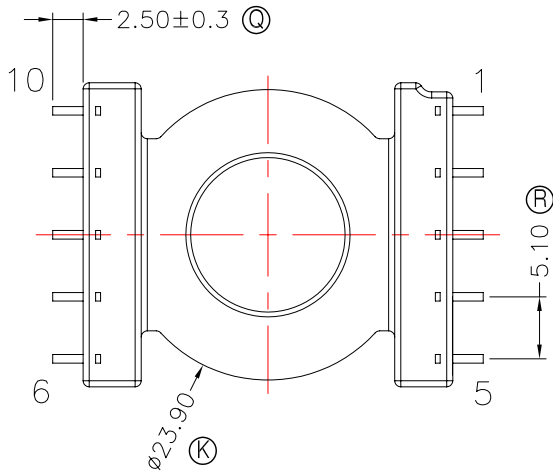
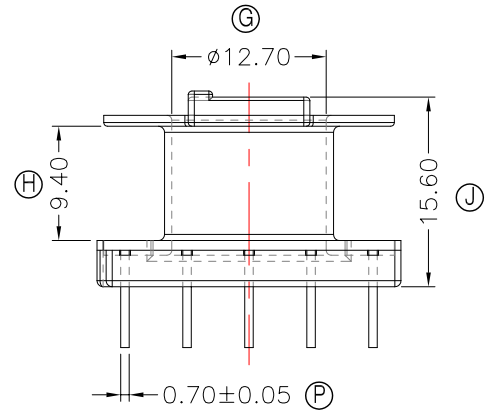
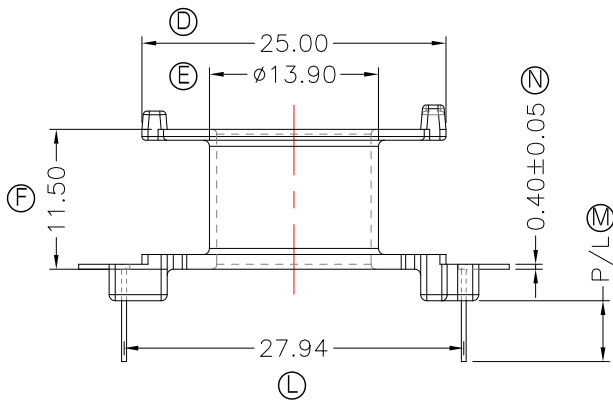
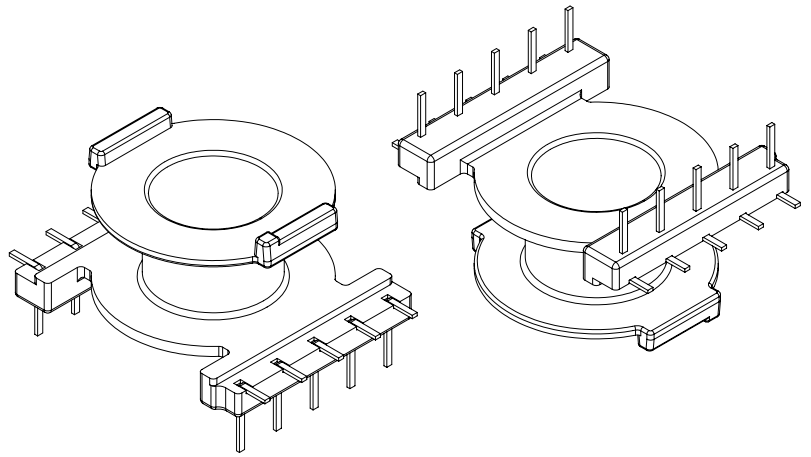
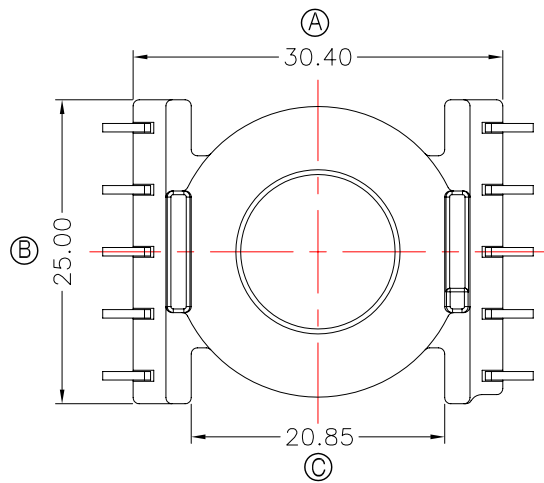




TRANSFORMER BOBBIN
INDUSTRIAL CO.,LTD.

Tel : 86-769-88789999 Fax : 86-769-88789989
http:// tbi-tw.com e-mail : tb6688@ms46.hinet.net

REVISIONS				
REV	SYM	DRAFTER	CHECKER	DATE
1		M.WANG	G.F.YANG	09/24/16
2				
3				



NOTE:

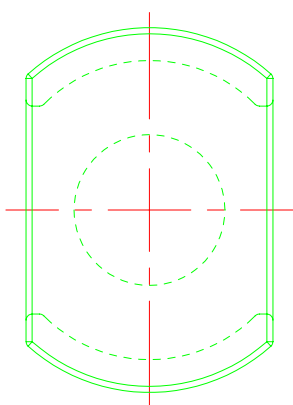
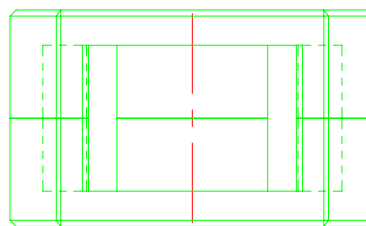
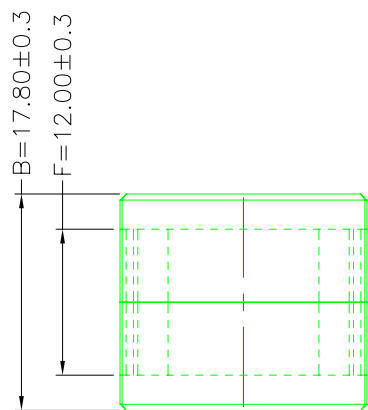
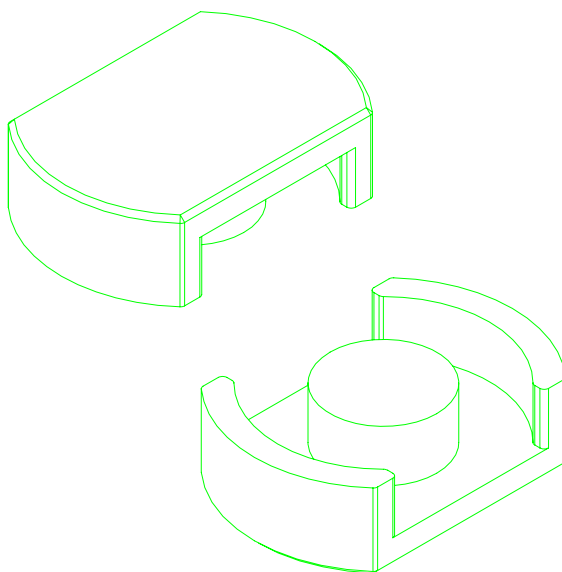
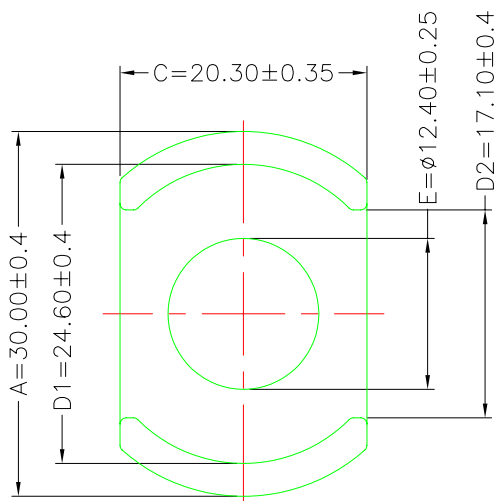
- 1.CORE TYPE :CC30/17.8D
- 2.任意一點強度須1.5kg MIN;
- 3.耐壓4.0Kv /1.5mA 60S;
- 4.焊錫溫度:450°±10° 3SEC;
- 5.焊錫前推力:1.0KG MIN,焊錫後推力:1.5KG MIN;

DWG NO.	CC30/18-2-10P-THL-5.1-H-17				
PART NO.	MATERIAL (BOBBIN)	MATERIAL (TERMINAL)	TERMINAL (PLATING)	PIN ALLOCATION	NOTE
TBI-239-02081.1706	PM-9823	CP WIRE	Sn	ALL PIN P/L=5.0±0.2	S H
TOLERANCE: 0<L<=4: ±0.1 4<L<=16: ±0.2 16<L<=63: ±0.3				UNIT : m / m	SCALE 1 : 1
Finish: 1. PB wire Immersion Sn on terminal : Thickness:Sn plating,100%,5 μm (200 μ inches) min,Base nickel 0.625 μm (25 μ inches) min. 2. CP wire Immersion Sn on terminal : Thickness:Sn plating,100%,5 μm (200 μ inches) min. 3. Coplanarity deviation: 0.10 mm (0.004 inches) max.					REV 1

A-CORE
ELECTRICAL CO.

A-CORE JIANGMEN ELECTRONICS CO.,LTD
 江门安磁电子有限公司
 Tel: 86-750-3867791 Fax : 86-750-3867787

REVISIONS				
REV	SYM	DRAFTER	CHECKER	DATE
①		X.H.GU	G.F.YANG	09/24/16
②				
③				



Core Set Parameters

$C1=0.359\text{mm}^{-1}$
 $Le=43.8\text{mm}$
 $Ae=122\text{mm}^2$
 $Ve=5343.6\text{mm}^3$

DWG NO.	CC30/17.8D-CORE				
PART NO.	MATERIAL (BOBBIN)	MATERIAL (TERMINAL)	TERMINAL (PLATING)	PIN ALLOCATION	NOTE
CC30/17.8D	JPP-44A				
CC30/17.8D	JPP-95				
Finish:	TOLERANCE: 0<L<=4: ±0.1 4<L<=16: ±0.2 16<L<=63: ±0.3			UNIT : m / m	SCALE 1 : 1
				REV	1

A-CORE

A-CORE JIANGMEN ELECTRONICS CO.,LTD
 江門安磁電子有限公司

TBI

TRANSFORMER BOBBIN
 INDUSTRIAL CO.,LTD.

ELECTRICAL CO. Tel : 86-750-3867791 Fax : 86-750-3867787

Tel : 86-769-88789999 Fax : 86-769-88789989

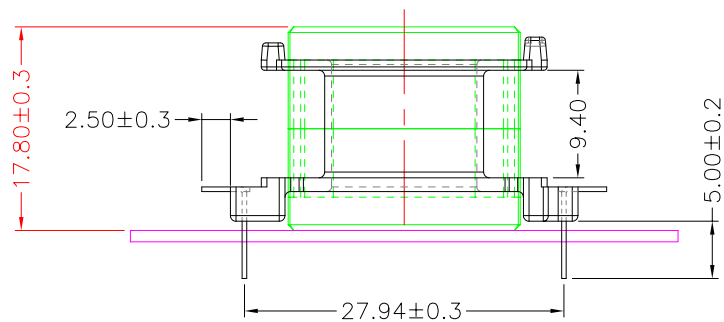
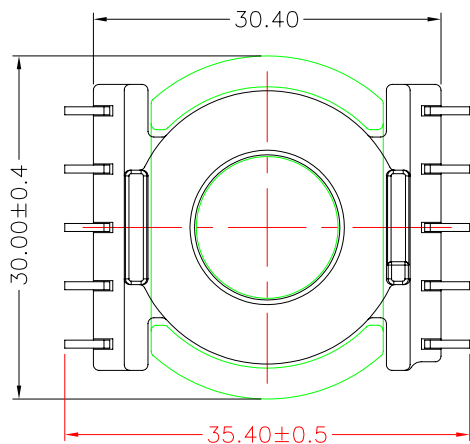
e-mail : sales@acore-ferrite.com

http:// tbi-tw.com e-mail : tb6688@ms46.hinet.net

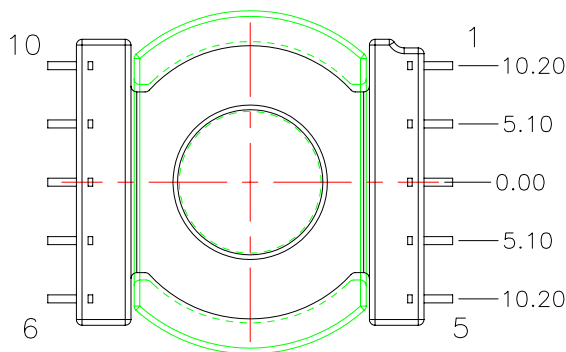
REVISIONS

REV	SYM	DRAFTER	CHECKER	DATE
△1		M.WANG	G.F.YANG	09/24/16
△2				
△3				

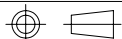
TOP



BOTTOM



ITEM	PART NO.	MATERIAL	DWG NO.	Core Set Parameters
CORE	CC30/17.8D	JPP-44A		C1=0.359mm ⁻¹ Le=43.8mm Ae=122mm ² Ve=5343.6mm ³
CORE	CC30/17.8D	JPP-95		
BOBBIN	TBI-239-02081.17XX		CC30/18-2-10P-THL-5.1-H-17	



UNIT : m / m

SCALE 1 : 1

REV

1