

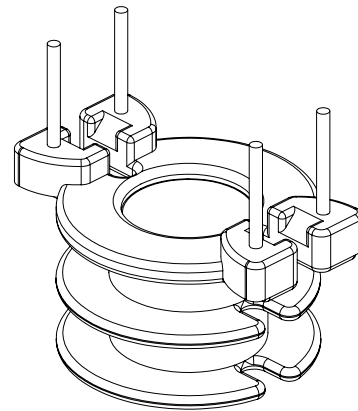
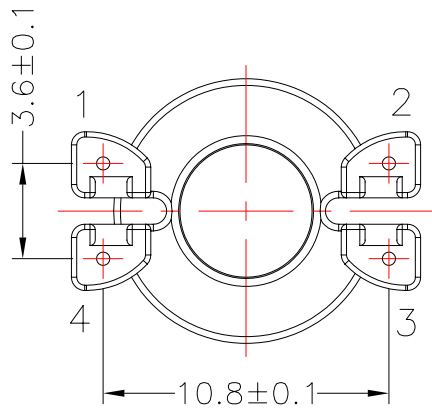
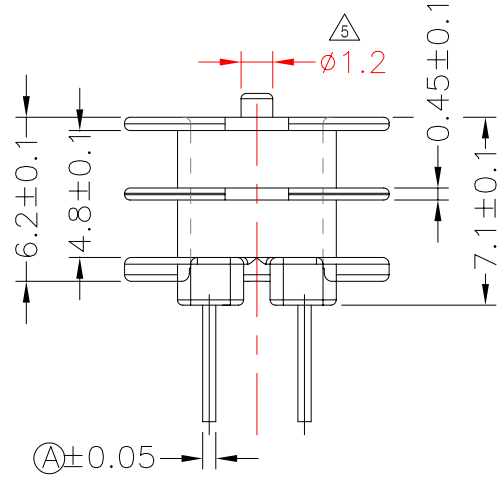
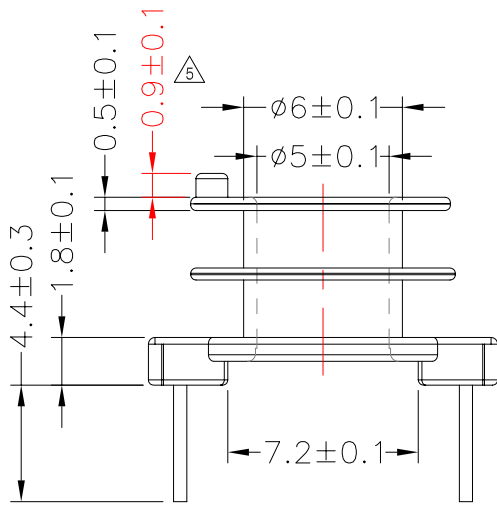
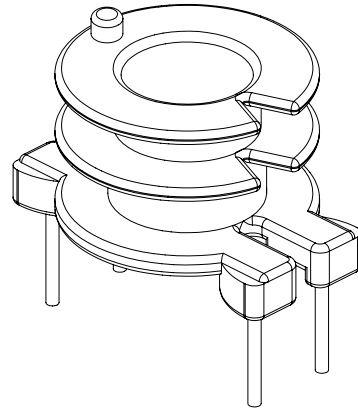
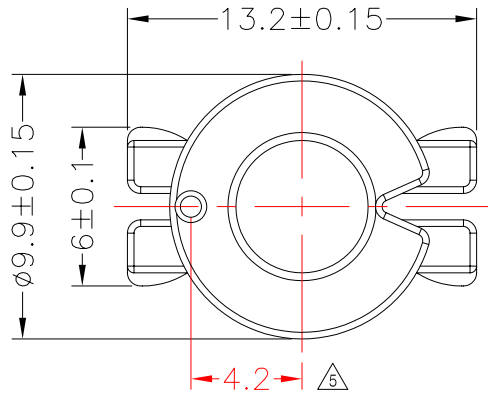


TRANSFORMER BOBBIN INDUSTRIAL CO.,LTD.

Tel : 86-769-88789999 Fax : 86-769-88789989
 http:// tbi-tw.com e-mail : tb6688@ms46.hinet.net

REVISIONS

REV	SYM	DRAFTER	CHECKER	DATE
△3		T.S.LII	W.H.HSU	06/02/03
△4		T.S.LII	W.H.HSU	07/21/06
△5		S.Y.TANG	G.F.YANG	06/26/09



DWG NO.	RM5-4P-TH-A-1-2S				
PART NO.	MATERIAL (BOBBIN)	MATERIAL (TERMINAL)	TERMINAL (PLATING)	PIN ALLOCATION	NOTE
TBI-208-03012.106	PM-9630	CP WIRE	Sn	ALL PIN (A)= Ø 0.5	
TBI-208-03012.116	PM-9630	CP WIRE	Sn	ALL PIN (A)=SQ.4	
			TOLERANCE: .X±0.15 .XX±0.10 .XXX±0.05	UNIT : m / m	SCALE 3.5 : 1
Finish: 1. PB wire Immersion Sn on terminal : Thickness:Sn plating,100,5 μm (200 μ inches) min,Base nickel 0.625 μm (25 μ inches) min. 2. CP wire Immersion Sn on terminal : Thickness:Sn plating,100,5 μm (200 μ inches) min. 3. Coplanarity deviation: 0.10 mm (0.004 inches) max.					REV 5