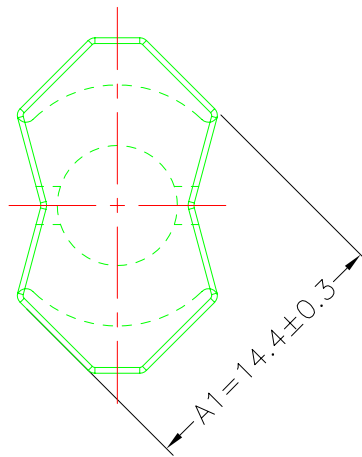
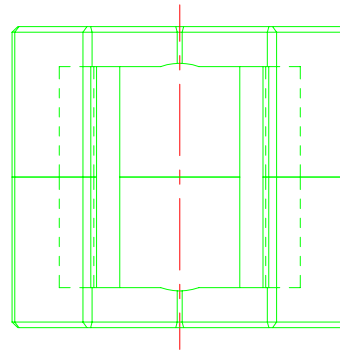
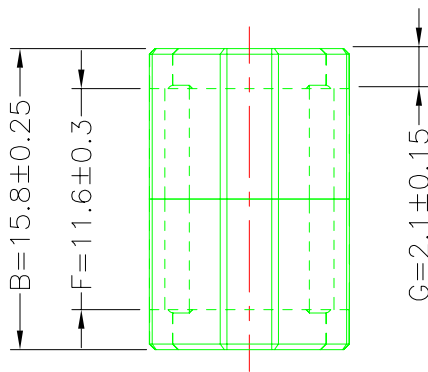
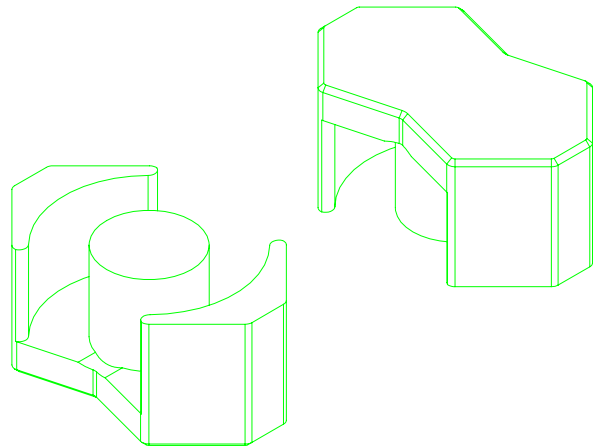
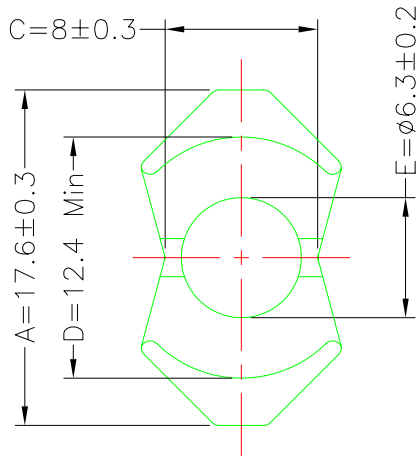


A-CORE
ELECTRICAL CO.

A-CORE JIANGMEN ELECTRONICS CO.,LTD
 江门安磁电子有限公司
 Tel: 86-750-3867791 Fax : 86-750-3867787

REVISIONS				
REV	SYM	DRAFTER	CHECKER	DATE
①		X.H.GU	G.F.YANG	02/19/14
②				
③				



Core Set Parameters

$$A_e = 36.4 \text{mm}^2$$

$$L_e = 37.3 \text{mm}$$

$$C1 = 1.02 \text{mm}^{-1}$$

$$V_e = 1357.72 \text{mm}^3$$

DWG NO.	RM6/15.8G-CORE				
PART NO.	MATERIAL (BOBBIN)	MATERIAL (TERMINAL)	TERMINAL (PLATING)	PIN ALLOCATION	NOTE
RM6/15.8G	JPP-44A				
RM6/15.8G	JPP-95				
Finish:	TOLERANCE: $0 < L \leq 4: \pm 0.1$ $4 < L \leq 16: \pm 0.2$ $16 < L \leq 63: \pm 0.3$			UNIT : m / m	SCALE 1 : 1
				REV	1

A-COREA-CORE JIANGMEN ELECTRONICS CO.,LTD
江門安磁電子有限公司

ELECTRICAL CO. Tel : 86-750-3867791 Fax : 86-750-3867787

e-mail : sales@acore-ferrite.com

TBITRANSFORMER BOBBIN
INDUSTRIAL CO.,LTD.

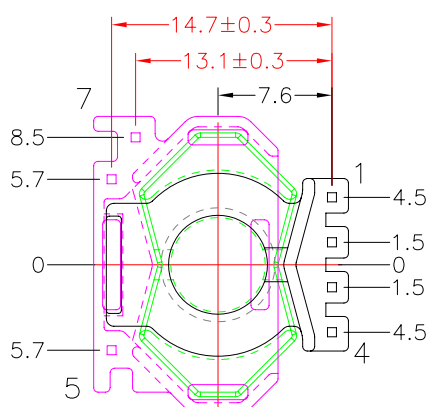
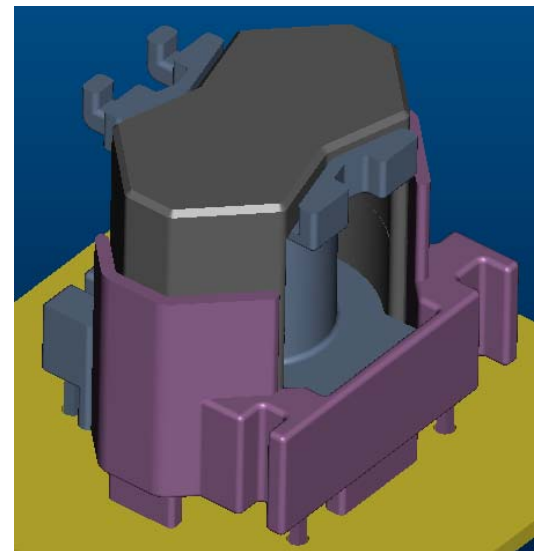
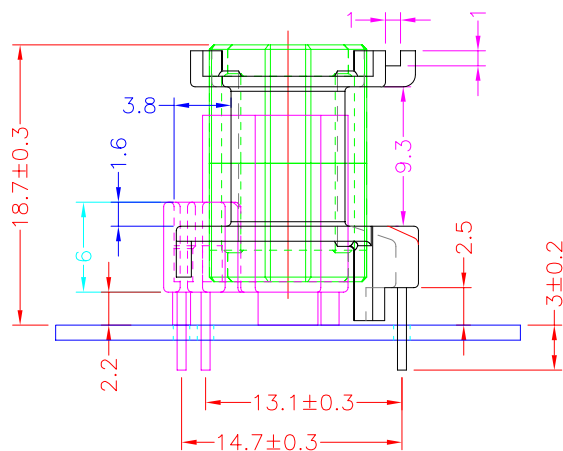
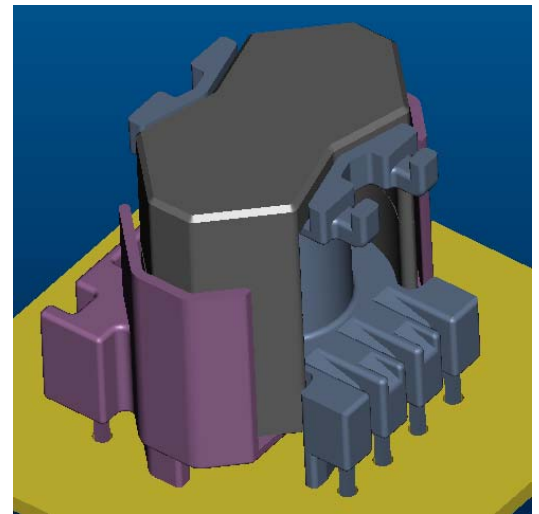
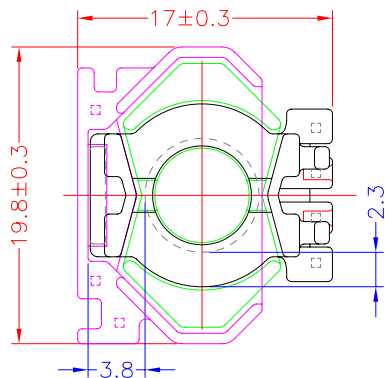
Tel : 86-769-88789999 Fax : 86-769-88789989

http:// tbi-tw.com e-mail : tb6688@ms46.hinet.net

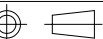
REVISIONS

REV	SYM	DRAFTER	CHECKER	DATE
△1		X.H.GU	G.F.YANG	03/04/14
△2		X.H.GU	G.F.YANG	08/25/15
△3				

TOP



BOTTOM

ITEM	PART NO.	MATERIAL	DWG NO.	Core Set Parameters	
CORE	RM6/15.8G	JPP-44A		$A_e = 36.4\text{mm}^2$ $L_e = 37.3\text{mm}$ $C_1 = 1.02\text{mm}^{-1}$ $V_e = 1357.72\text{mm}^3$	
CORE	RM6/15.8G	JPP-95			
BOBBIN	TBI-208-02131.11XX		RM6-15.8G-4P-TH-A3-11		
CASE	TBI-208-02141.11XX		RM6-15.8G-3P-CASE-A4-11		
				UNIT : m/m	SCALE 1 : 1

REV 2