

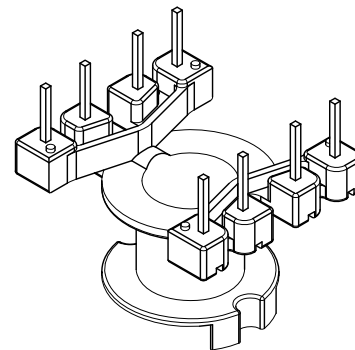
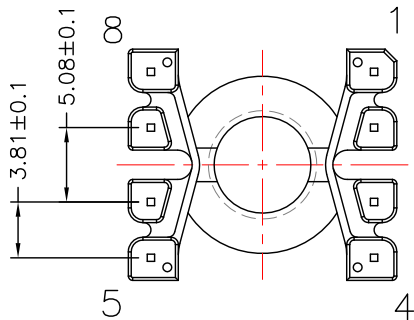
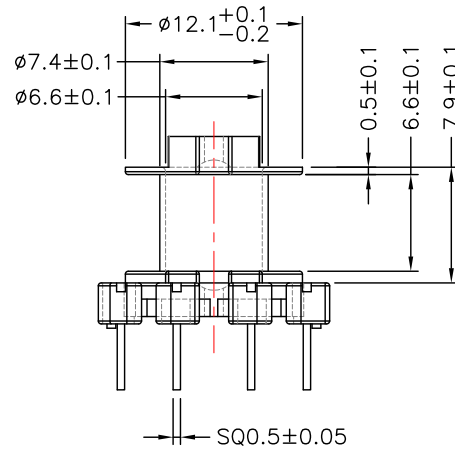
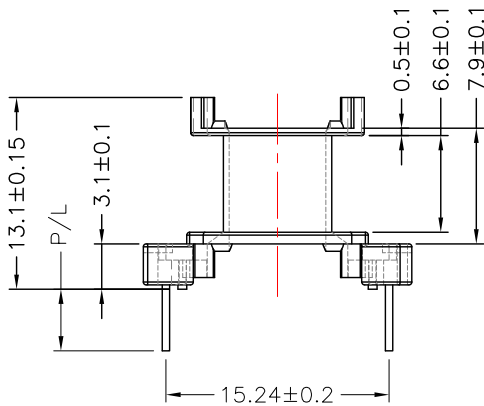
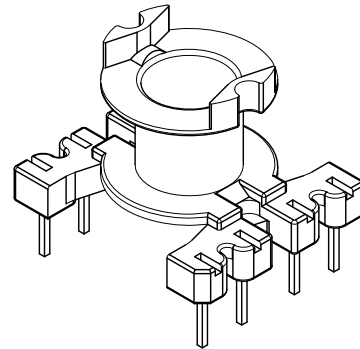
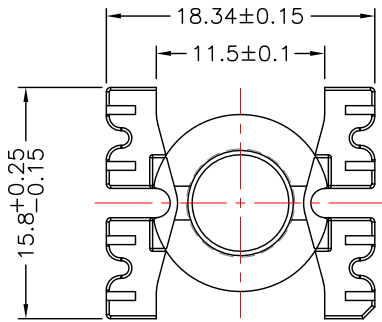


**TRANSFORMER BOBBIN
INDUSTRIAL CO.,LTD.**

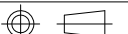
Tel : 86-769-88789999 Fax : 86-769-88789989
http:// tbi-tw.com e-mail : tb6688@ms46.hinet.net

REVISIONS

REV	SYM	DRAFTER	CHECKER	DATE
①		T.S.LII	W.H.HSU	07/15/04
②		T.S.LII	W.H.HSU	07/24/06
③				



DWG NO.	RM6-8P-TH-3.81-E-1			PIN ALLOCATION	NOTE
PART NO.	MATERIAL (BOBBIN)	MATERIAL (TERMINAL)	TERMINAL (PLATING)		
TBI-208-02051.106	PM-9630	CP WIRE	Sn	ALL PIN P/L=4.2±0.3	
TBI-208-02051.116	PM-9630	CP WIRE	Sn	NO PIN#5,6,7,8 P/L=4.2±0.3	H
TBI-208-02051.126	PM-9630	CP WIRE	Sn	NO PIN#2,3,4,7 P/L=4.2±0.3	
TBI-208-02051.136	PM-9630	CP WIRE	Sn	NO PIN#5,6,7,8 P/L=4.5±0.3	
TBI-208-02051.146	PM-9630	CP WIRE	Sn	NO PIN#5,8 P/L=4.2±0.3	
TBI-208-02051.156	PM-9630	CP WIRE	Sn	NO PIN#5,8 P/L=4.5±0.3	
TBI-208-02051.166	PM-9630	CP WIRE	Sn	ALL PIN P/L=5.0±0.3	
TBI-208-02051.176	PM-9630	CP WIRE	Sn	NO PIN#5,6 P/L=4.2±0.3	



TOLERANCE: .X±0.15 .XX±0.10 .XXX±0.05

UNIT : m / m

SCALE 1 : 1

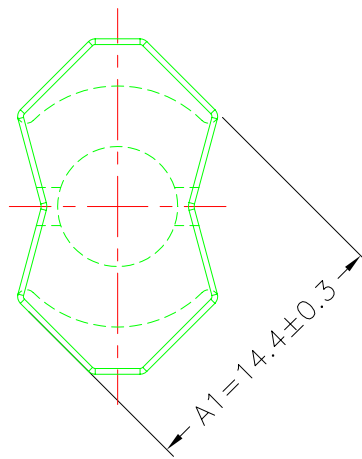
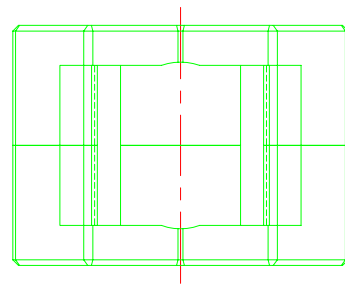
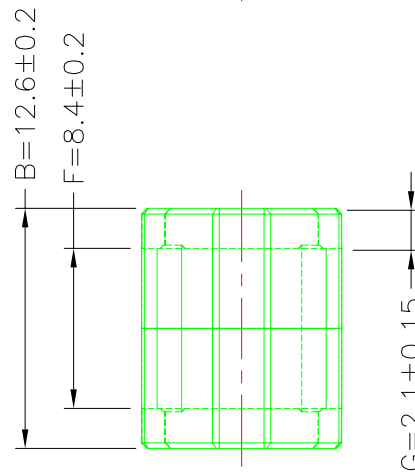
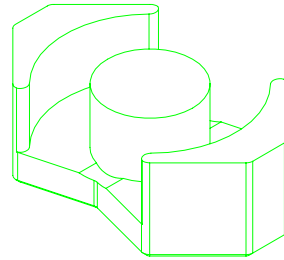
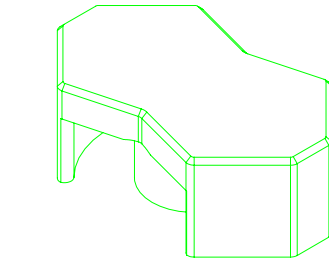
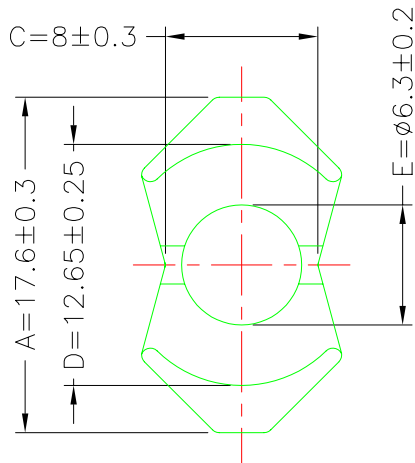
Finish: 1. PB wire Immersion Sn on terminal : Thickness:Sn plating,100,5µm (200µ inches) min,Base nickel 0.625µm (25µ inches) min.
2. CP wire Immersion Sn on terminal : Thickness:Sn plating,100,5µm (200µ inches) min.
3. Coplanarity deviation: 0.10 mm (0.004 inches)max.

REV 2

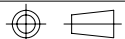
A-CORE
ELECTRICAL CO.

A-CORE JIANGMEN ELECTRONICS CO.,LTD
 江门安磁电子有限公司
 Tel: 86-750-3867791 Fax : 86-750-3867787

REVISIONS				
REV	SYM	DRAFTER	CHECKER	DATE
①		H.X.DUAN	G.F.YANG	06/23/11
②				
③				



DWG NO.	RM6/12.6G-CORE				
PART NO.	MATERIAL (BOBBIN)	MATERIAL (TERMINAL)	TERMINAL (PLATING)	PIN ALLOCATION	NOTE
RM6/12.6G	JPP-44A				
RM6/12.6G	JPP-95				



Finish:

UNIT : m/m

SCALE 1 : 1

REV 1

A-CORE

A-CORE JIANGMEN ELECTRONICS CO.,LTD
江門安磁電子有限公司

TBI

TRANSFORMER BOBBIN
INDUSTRIAL CO.,LTD.

ELECTRICAL CO. Tel : 86-750-3867791 Fax : 86-750-3867787

Tel : 86-769-88789999 Fax : 86-769-88789989

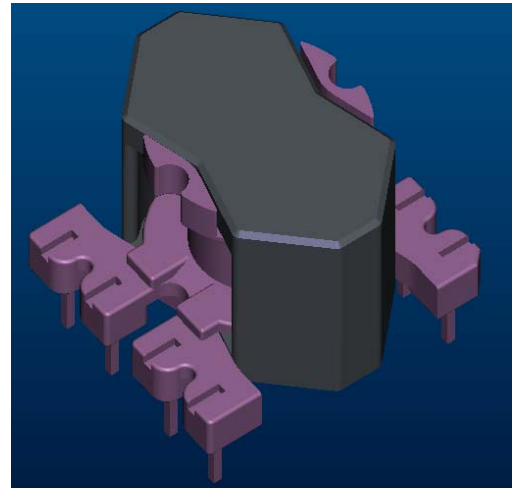
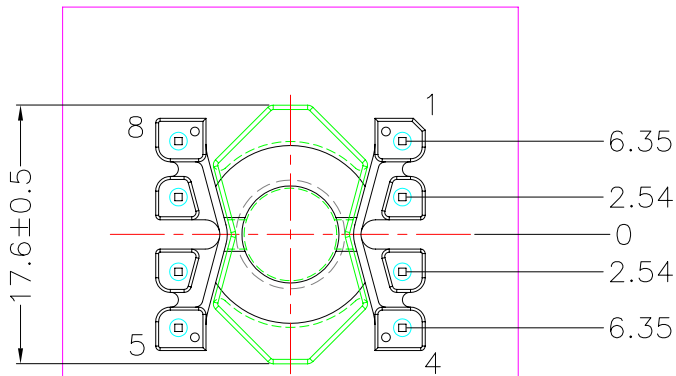
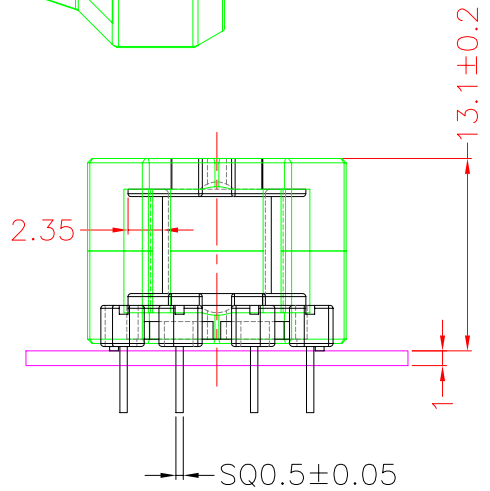
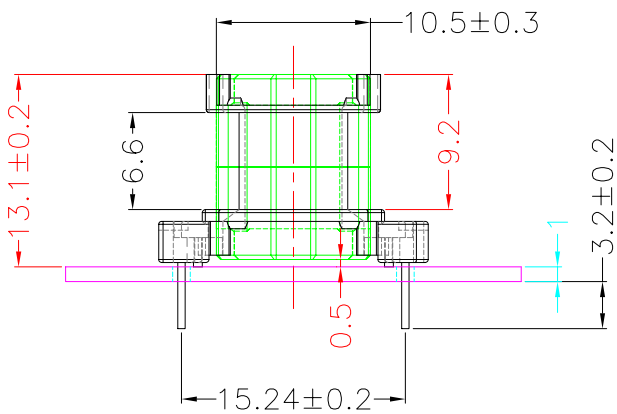
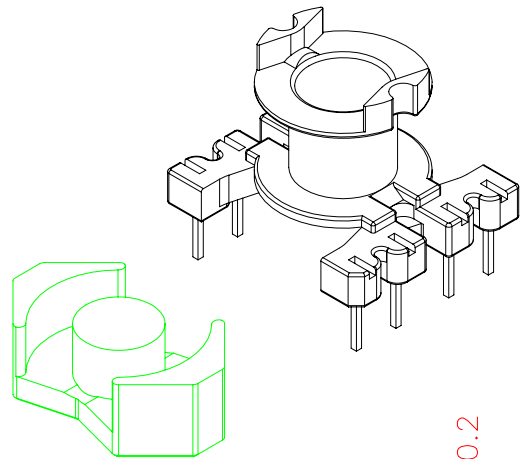
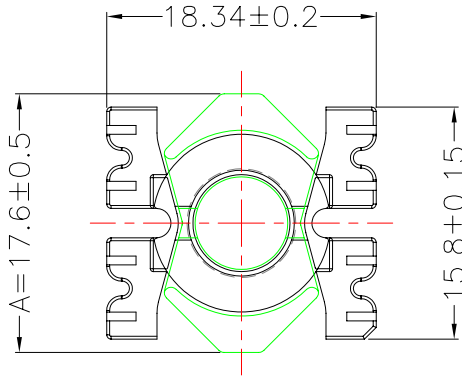
e-mail : sales@acore-ferrite.com

http:// tbi-tw.com e-mail : tb6688@ms46.hinet.net

REVISIONS

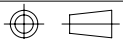
REV	SYM	DRAFTER	CHECKER	DATE
1		H.X.DUAN	G.F.YANG	06/23/11
2				
3				

TOP



BOTTOM

ITEM	PART NO.	MATERIAL	DWG NO.	Core Set Parameters
CORE	RM6/12.6G	JPP-44A		Core Set Parameters Ae=37mm ² Le=31.0mm C1=0.84mm ⁻¹ Ve=1147mm ³
CORE	RM6/12.6G	JPP-95		
BOBBIN	TBI-208-02051.106		RM6-8P-TH-3.81-E-1	



UNIT : m/m

SCALE 1:1

REV 1