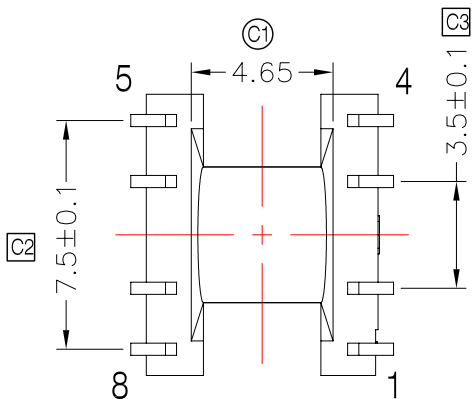
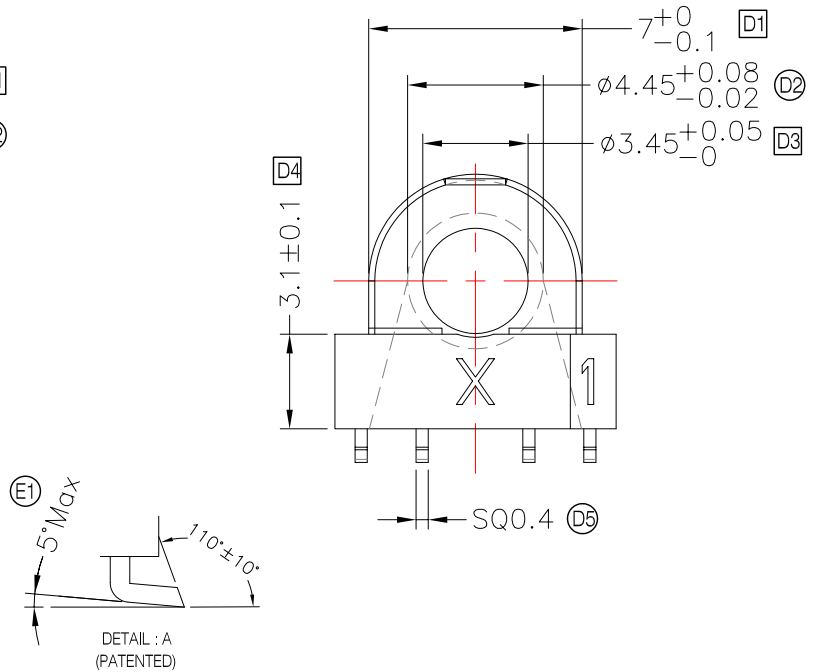
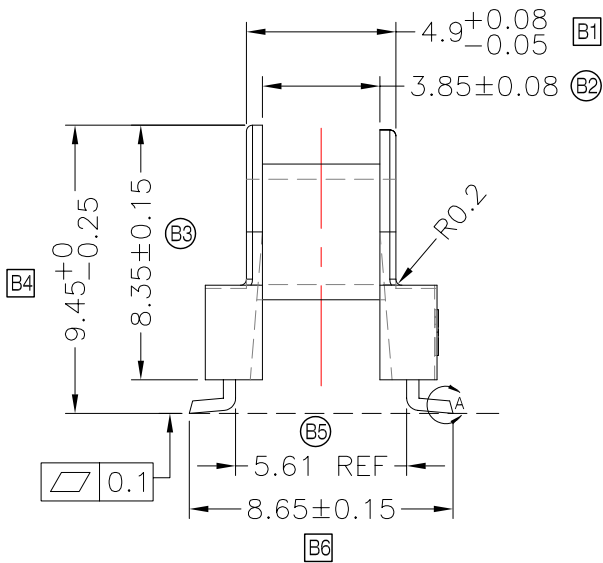
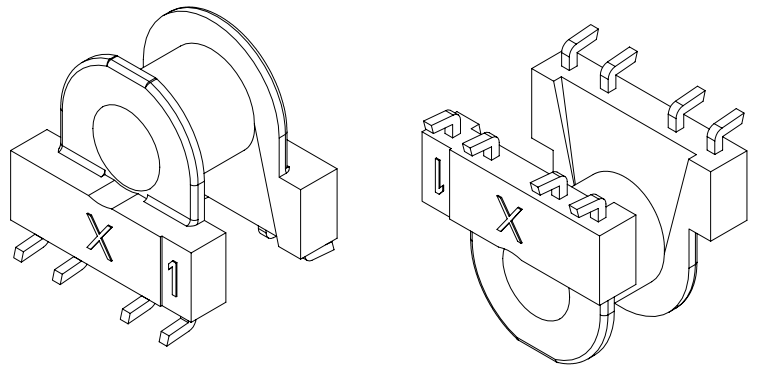
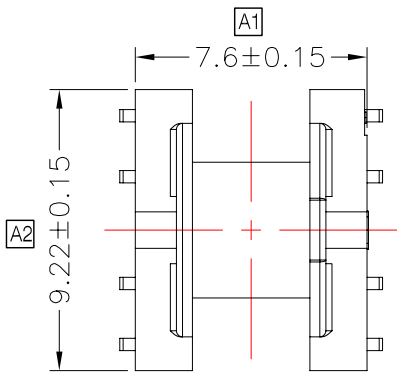




**TRANSFORMER BOBBIN  
INDUSTRIAL CO.,LTD.**

Tel : 86-769-88789999 Fax : 86-769-88789989  
http:// tbi-tw.com e-mail : tb6888@ms46.hinet.net

REVISIONS				
REV	SYM	DRAFTER	CHECKER	DATE
1		X.H.GU	G.F.YANG	06/16/11
2				
3				

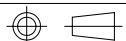


**NOTES:**

- 1.耐壓:2.0KV AC 2mA;
- 2.PIN焊錫後拉力:0.8KG min;
- 3.Pins鍍層要求:先鍍鎳(厚度1-3um),后鍍錫(厚度5um min);
- 4.PIN平貼度要求:0.1mm max;
- 5.其它檢驗請參考原材料規範;
- 6.所有未注圓角0.2mm min, 未標公差參照標題欄公差表局部細節請依據3D模型;
- 7.標識☐為重要尺寸, 標識⊗為次要尺寸, 其他為參考尺寸.

DWG NO. EP7-8P-L-F3-11

PART NO.	MATERIAL (BOBBIN)	MATERIAL (TERMINAL)	TERMINAL (PLATING)	PIN ALLOCATION	NOTE
TBI-103-08631.1103	PM-9630(BK)	PB	Sn	ALL PIN	S
TBI-103-08631.1113	PM-9630(BK)	PB	Sn	ALL PIN 成品後須電鍍	H



TOLERANCE: .X±0.15 .XX±0.10 .XXX±0.05

UNIT : m / m

SCALE 4 : 1

Finish: 1. PB wire Immersion Sn on terminal : Thickness:Sn plating,100%,5 µm (200 µm inches) min,Base nickel 1-2.5 µm (40-100 µm inches) min.  
2. CP wire Immersion Sn on terminal : Thickness:Sn plating,100%,5 µm (200 µm inches) min.  
3. Coplanarity deviation: 0.10 mm (0.004 inches) max.

REV 1