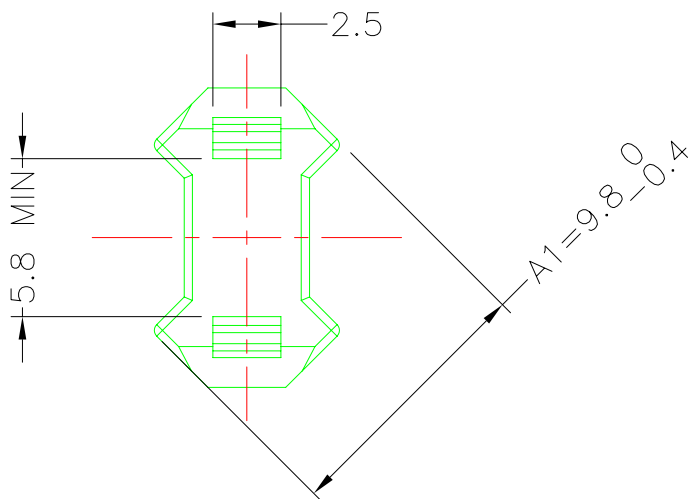
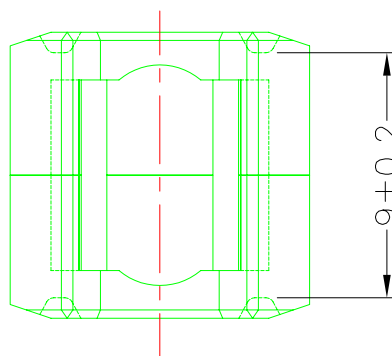
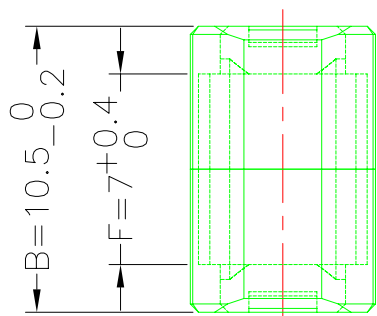
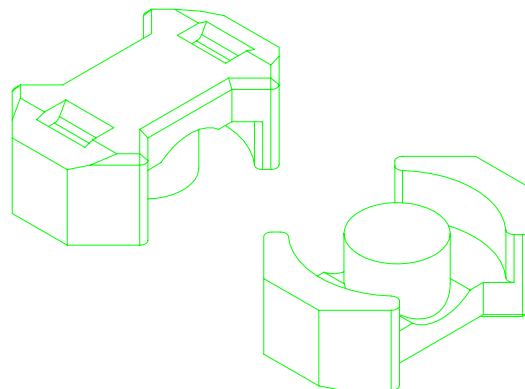
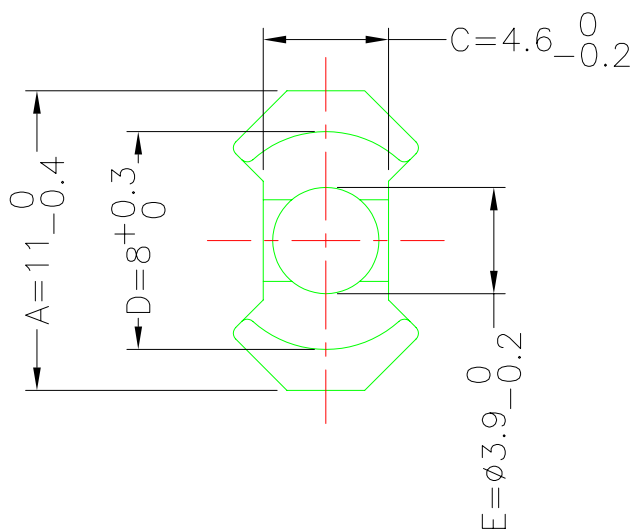




**A-CORE**  
ELECTRICAL CO.

A-CORE JIANGMEN ELECTRONICS CO.,LTD  
江門安磁電子有限公司  
Fax : 86-750-3867787

REVISIONS				
REV	SYM	DRAFTER	CHECKER	DATE
1		H.X.DUAN	G.F.YANG	02/25/12
2				
3				

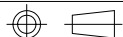


Cross section area

$A_e = 13 \text{ mm}^2$   
 $L_e = 22 \text{ mm}$   
 $C1 = ? \text{ mm}^{-1}$   
 $V_e = 286 \text{ mm}^3$

DWG NO. RM4/10.5 CORE

PART NO.	MATERIAL (BOBBIN)	MATERIAL (TERMINAL)	TERMINAL (PLATING)	PIN ALLOCATION	NOTE
RM4/10.5	JPP-44A				
RM4/10.5	JPP-95				



Finish:

UNIT : m/m

SCALE 1 : 1

REV 1

**A-CORE**

A-CORE JIANGMEN ELECTRONICS CO.,LTD  
江門安磁電子有限公司

**TBI**

TRANSFORMER BOBBIN  
INDUSTRIAL CO.,LTD.

ELECTRICAL CO. Tel : 86-750-3867791 Fax : 86-750-3867787

Tel : 86-769-88789999 Fax : 86-769-88789989

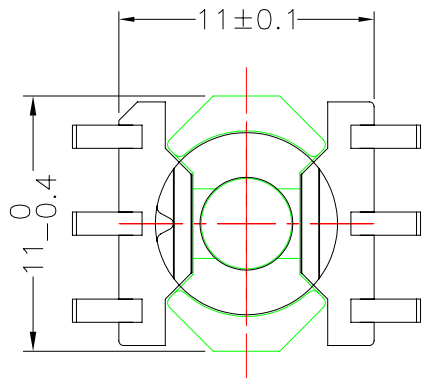
e-mail : sales@acore-ferrite.com

http://tbi-tw.com e-mail : tb6688@ms46.hinet.net

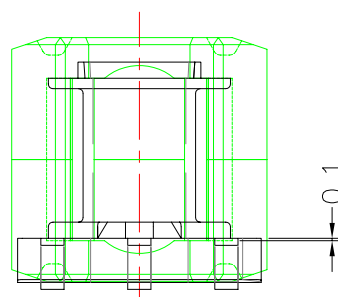
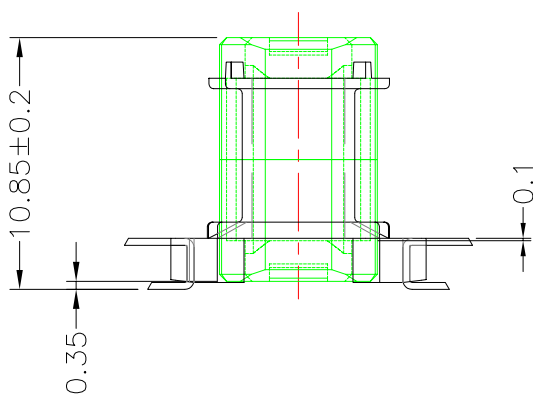
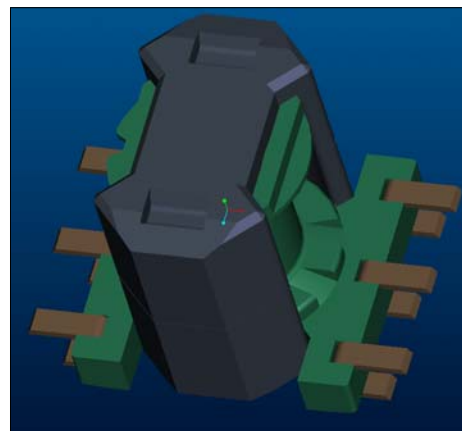
REVISIONS

REV	SYM	DRAFTER	CHECKER	DATE
△3		T.S.LII	W.H.HSU	10/05/04
△4		T.S.LII	W.H.HSU	07/25/06
△5		Y.G.HSU	W.H.HSU	06/23/07

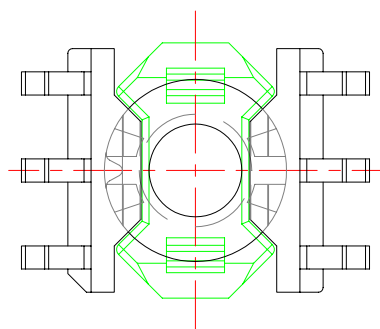
TOP



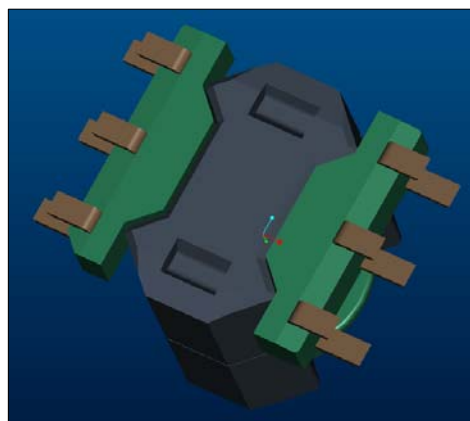
TOP



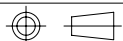
BOTTOM



BOTTOM



ITEM	PART NO.	MATERIAL	DWG NO.	Core Set Parameters
CORE	RM4/10.5	JPP-44A		$A_e=13\text{mm}^2$ $L_e=22\text{mm}$ $C_1=?\text{mm}^{-1}$ $V_e=286\text{mm}^3$
CORE	RM4/10.5	JPP-95		
BOBBIN	TBI-108-01021.1XX		RM4-6P-J-3.75-B-1	



UNIT : m / m

SCALE 1 : 1

REV 5