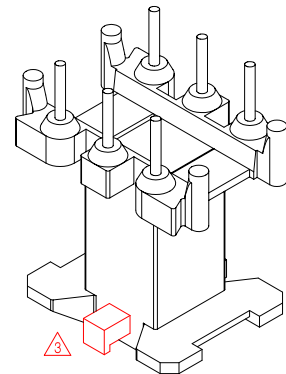
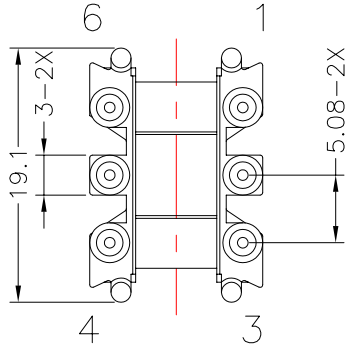
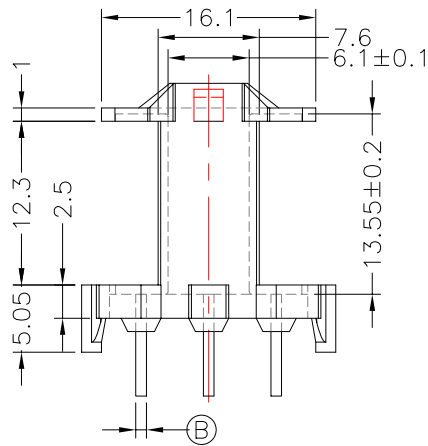
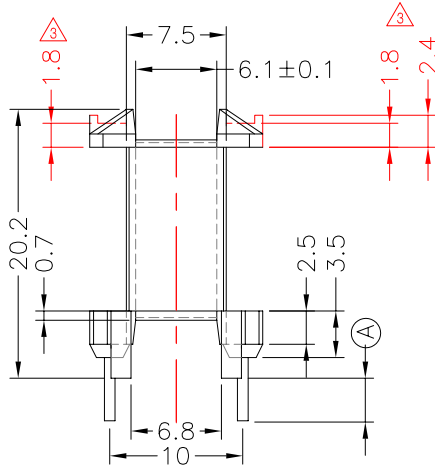
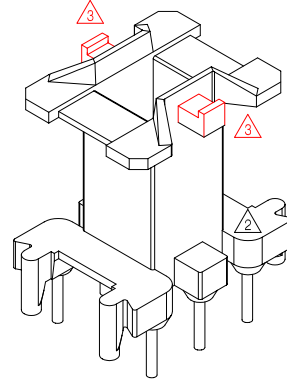
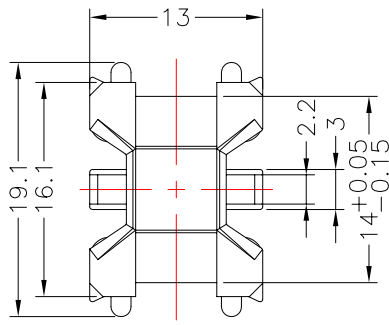




TRANSFORMER BOBBIN  
INDUSTRIAL CO.,LTD.

Tel : 86-769-88789999 Fax : 86-769-88789989  
http:// tbi-tw.com e-mail : tb6688@ms46.hinet.net

REVISIONS				
REV	SYM	DRAFTER	CHECKER	DATE
△1		YAN.TANG	G.F.YANG	03/04/10
△2		X.H.GU	G.F.YANG	09/13/14
△3		X.H.GU	G.F.YANG	10/21/14



DWG NO. EF20-6P-TH-5.08-H-11

PART NO.	MATERIAL (BOBBIN)	MATERIAL (TERMINAL)	TERMINAL (PLATING)	PIN ALLOCATION	NOTE
TBI-205-03081.1106	PM-9630	CP WIRE	Sn	ALL PIN (A)=3.2±0.2(B)=SQ0.64	
TBI-205-03081.1116	PM-9630	CP WIRE	Sn	CUT PIN #2(A)=3.1±0.2(B)=SQ0.64	H
TBI-205-03081.1126	PM-9630	CP WIRE	Sn	CUT PIN #2,6(A)=3.2±0.2(B)=SQ0.64	
TBI-205-03081.1136	PM-9630	CP WIRE	Sn	CUT PIN #2,5(A)=3.2±0.2(B)=SQ0.64	
TBI-205-03081.1146	PM-9630	CP WIRE	Sn	CUT PIN #3,4,5(A)=3.3±0.2(B)=φ0.8	
TBI-205-03081.1156	PM-9630	CP WIRE	Sn	CUT PIN #3,4,5(A)=4.5±0.2(B)=φ0.8	
TBI-205-03081.1166	PM-9630	CP WIRE	Sn	ALL PIN (A)=4.5±0.2(B)=φ0.8	
TBI-205-03081.1176	PM-9630	CP WIRE	Sn	ALL PIN (A)=3.3±0.2(B)=φ0.8	
TBI-205-03081.1186	PM-9630	CP WIRE	Sn	CUT PIN #3,4,5(A)=3.0±0.2(B)=φ0.8	
TBI-205-03081.1196	PM-9630	CP WIRE	Sn	CUT PIN #3(A)=3.5±0.2(B)=φ0.8	
TBI-205-03081.11A6	PM-9630	CP WIRE	Sn	CUT PIN #3(A)=3.5±0.2(B)=φ0.8	咬花外露咬花寬度1.55±0.3, 深度0.05+0.02/-0.03
TBI-205-03081.11B6	PM-9630	CP WIRE	Sn	CUT PIN #2,3,5(A)=3.3±0.2(B)=φ0.8	
TBI-205-03081.11C6	PM-9630	CP WIRE	Sn	CUT PIN #1,2,3(A)=3.3±0.2(B)=φ0.8	

TOLERANCE: .X±0.15 .XX±0.10 .XXX±0.05 UNIT : m / m SCALE 2 : 1

Finish: 1. PB wire Immersion Sn on terminal : Thickness:Sn plating,100%,5 μm (200 μ inches) min,Base nickel 1-2 μm (40-80 μ inches) min.  
2. CP wire Immersion Sn on terminal : Thickness:Sn plating,100%,5 μm (200 μ inches) min.  
3. Coplanarity deviation: 0.10 mm (0.004 inches) max.

REV 3