

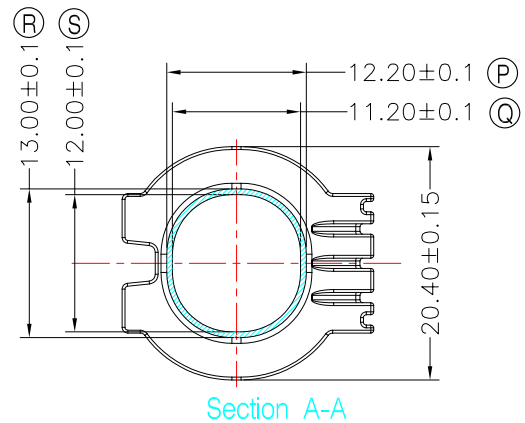
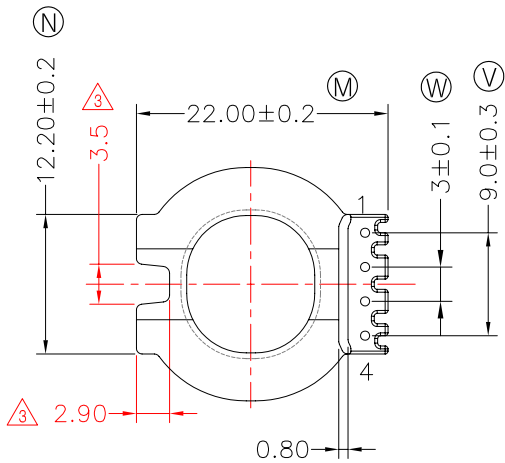
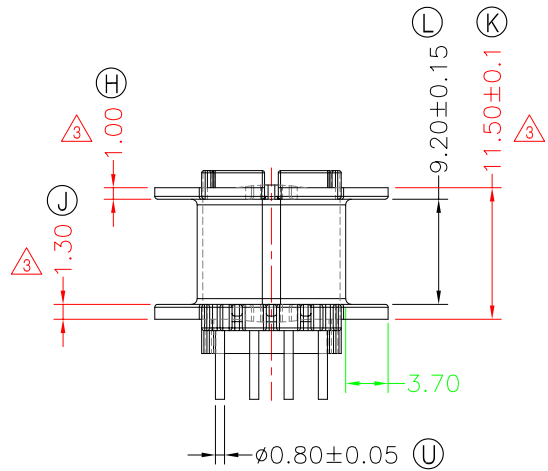
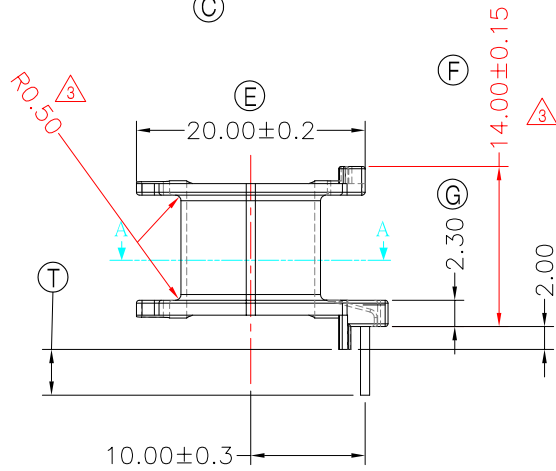
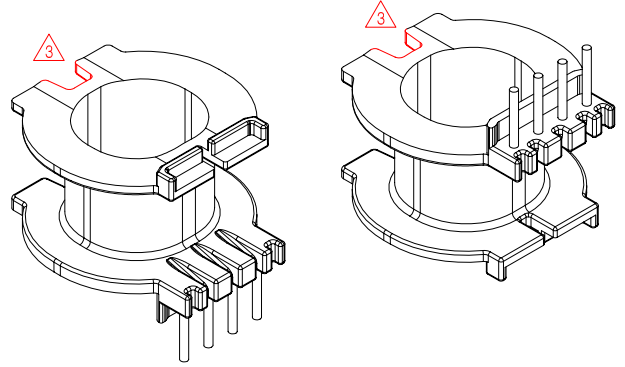
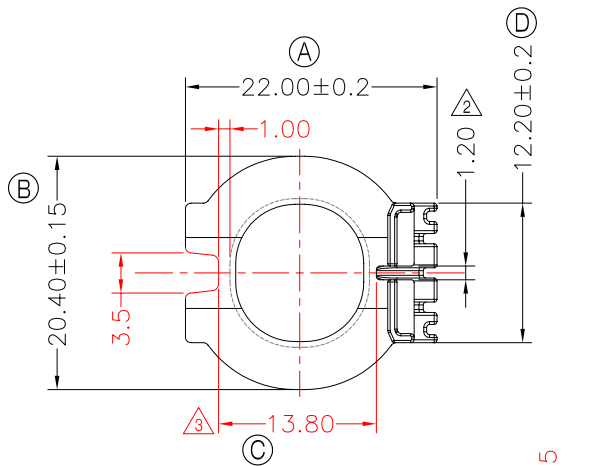


TRANSFORMER BOBBIN
INDUSTRIAL CO.,LTD.

Tel : 86-769-88789999 Fax : 86-769-88789989
http:// tbi-tw.com e-mail : tb6688@ms46.hinet.net

REVISIONS

REV	SYM	DRAFTER	CHECKER	DATE
①		F.LU	G.F.YANG	04/19/12
②		X.H.GU	G.F.YANG	05/29/12
③		X.H.GU	G.F.YANG	07/18/12



Section A-A

NOTE:

1. WINDING SPACE: 9.2mm*3.7mm=34.04mm²
2. PIN TENSION LOAD: 1.5KG MIN
3. 任一點的強度為2.0KgMIN,其中頂部葉片處為1.8Kg MIN;

DWG NO. ATQ24-17A-4P-TH-C7-12

PART NO.	MATERIAL (BOBBIN)	MATERIAL (TERMINAL)	TERMINAL (PLATING)	PIN ALLOCATION	NOTE
TBI-238-01371.1206	PM-9820	CP WIRE	Sn	ALL PIN (T) =4.0±0.2	S
TBI-238-01371.1216	PM-9820	CP WIRE	Sn	ALL PIN (T) =5.0±0.2	無刀模(內) H
TBI-238-01371.1226	PM-9820	CP WIRE	Sn	ALL PIN (T) =2.6±0.2	

TOLERANCE: 0<L<=4:±0.1 4<L<=16:±0.2 16<L<=63:±0.3

UNIT : m / m

SCALE 1 : 1

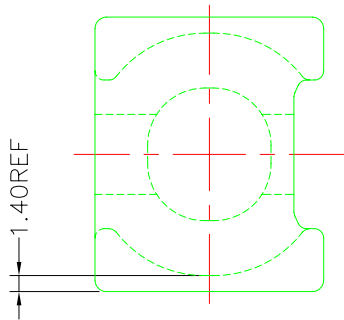
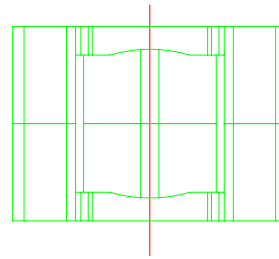
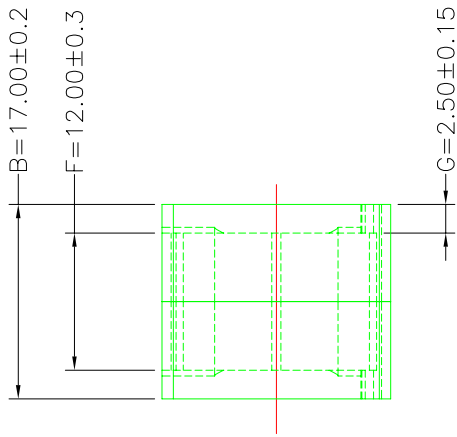
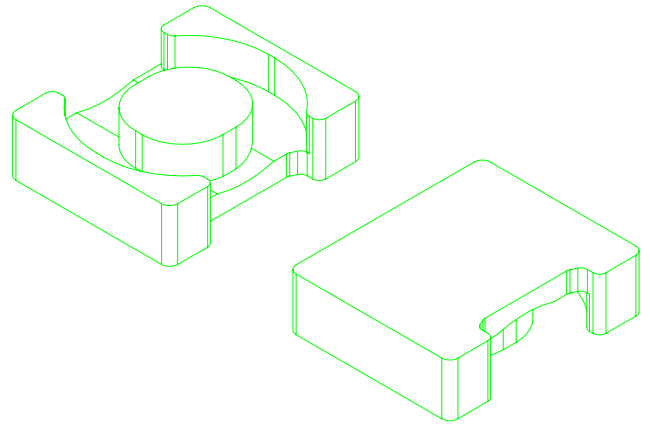
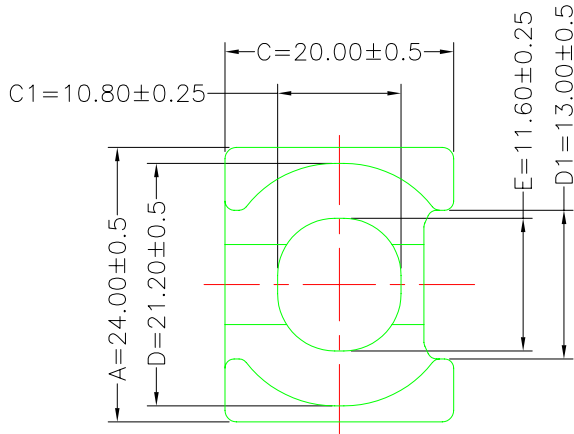
Finish: 1. PB wire Immersion Sn on terminal : Thickness:Sn plating,100,5 μm (200 μ inches) min,Base nickel 0.625 μm (25 μ inches) min.
2. CP wire Immersion Sn on terminal : Thickness:Sn plating,100,5 μm (200 μ inches) min.
3. Coplanarity deviation: 0.10 mm (0.004 inches) max.

REV 3

A-CORE
ELECTRICAL CO.

A-CORE JIANGMEN ELECTRONICS CO.,LTD
江門安磁電子有限公司
Tel : 86-750-3867791 Fax : 86-750-3867787

REVISIONS				
REV	SYM	DRAFTER	CHECKER	DATE
1		F.LU	G.F.YANG	04/19/12
2				
3				



Core Set Parameters

$A_e=106\text{mm}^2$
 $L_e=45.2\text{mm}$
 $C_1=0.426\text{mm}^{-1}$
 $V_e=4791.2\text{mm}^3$

DWG NO.	ATQ24/17A CORE				
PART NO.	MATERIAL (BOBBIN)	MATERIAL (TERMINAL)	TERMINAL (PLATING)	PIN ALLOCATION	NOTE
ATQ24/17A	JPP-44A				
ATQ24/17A	JPP-95				

Finish:	TOLERANCE: 0<L<=4:±0.1 4<L<=16:±0.2 16<L<=63:±0.3	UNIT : m/m	SCALE 1 : 1	
			REV	1

A-CORE

A-CORE JIANGMEN ELECTRONICS CO.,LTD
江門安磁電子有限公司

TBI

TRANSFORMER BOBBIN
INDUSTRIAL CO.,LTD.

ELECTRICAL CO. Tel : 86-750-3867791 Fax : 86-750-3867787

Tel : 86-769-88789999 Fax : 86-769-88789989

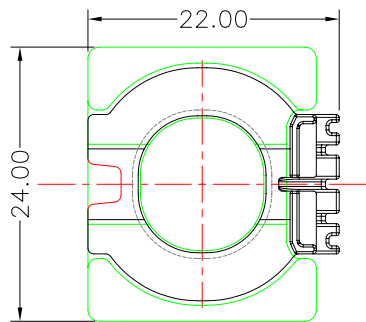
e-mail : sales@acore-ferrite.com

http:// tbi-tw.com e-mail : tb6688@ms46.hinet.net

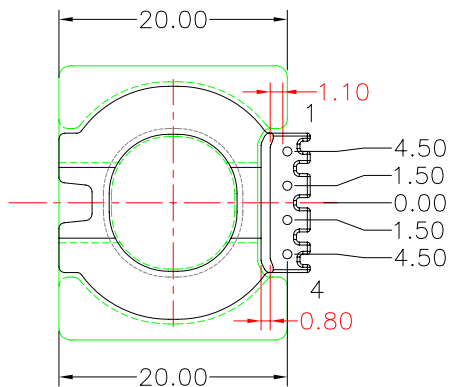
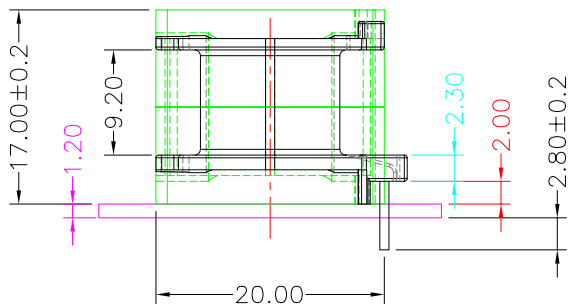
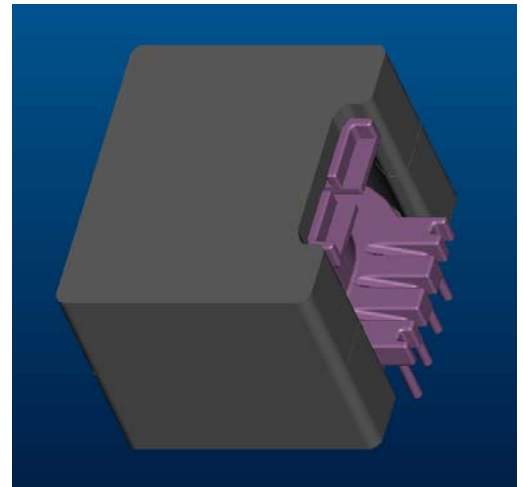
REVISIONS

REV	SYM	DRAFTER	CHECKER	DATE
△1		F.LU	G.F.YANG	04/19/12
△2		X.H.GU	G.F.YANG	05/29/12
△3		X.H.GU	G.F.YANG	07/18/12

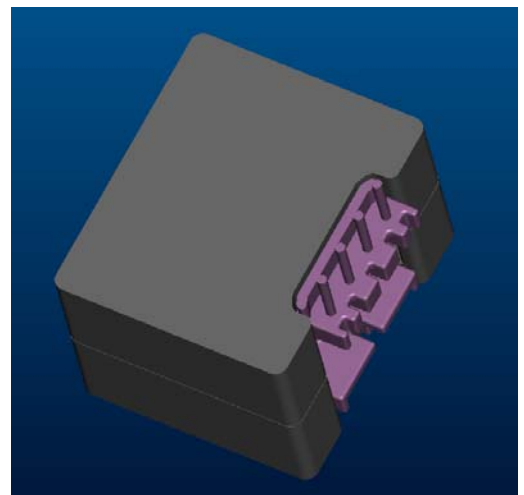
TOP



TOP

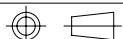


BOTTOM



BOTTOM

ITEM	PART NO.	MATERIAL	DWG NO.	Core Set Parameters
CORE	ATQ24/17A	JPP-44A		$A_e=106\text{mm}^2$ $L_e=45.2\text{mm}$ $C_1=0.426\text{mm}^{-1}$ $V_e=4791.2\text{mm}^3$
CORE	ATQ24/17A	JPP-95		
BOBBIN	TBI-238-01371.12XX		ATQ24-17A-4P-TH-C7-12	



UNIT : m/m

SCALE 1:1

REV

3