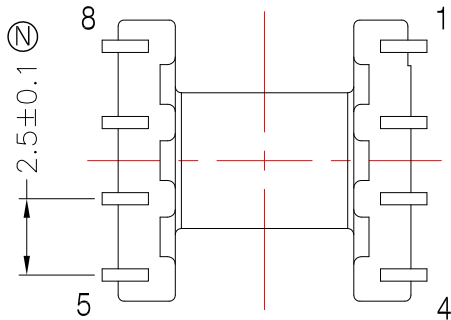
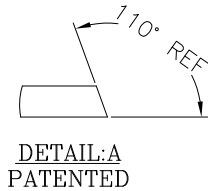
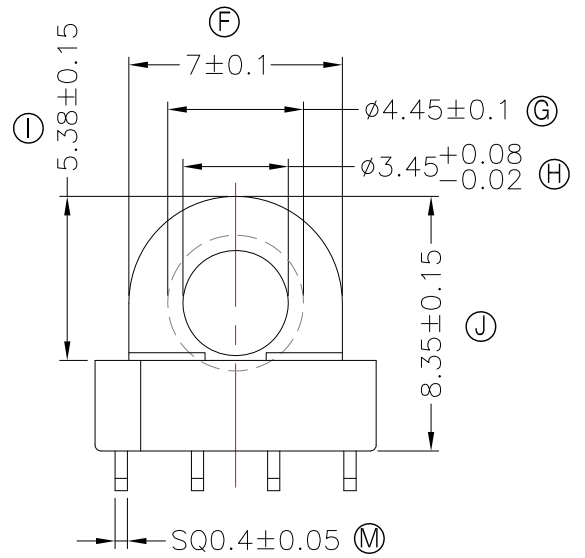
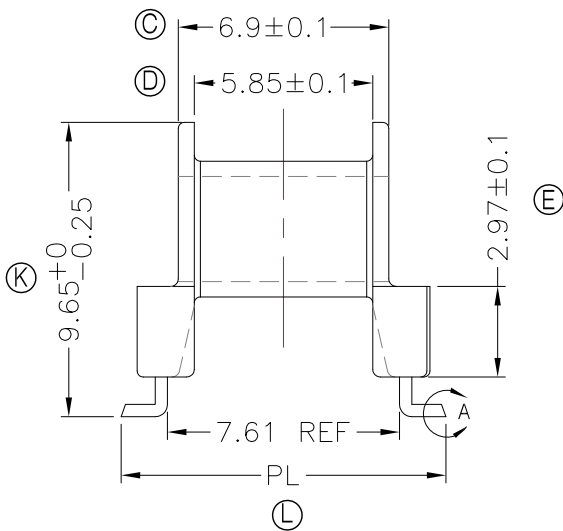
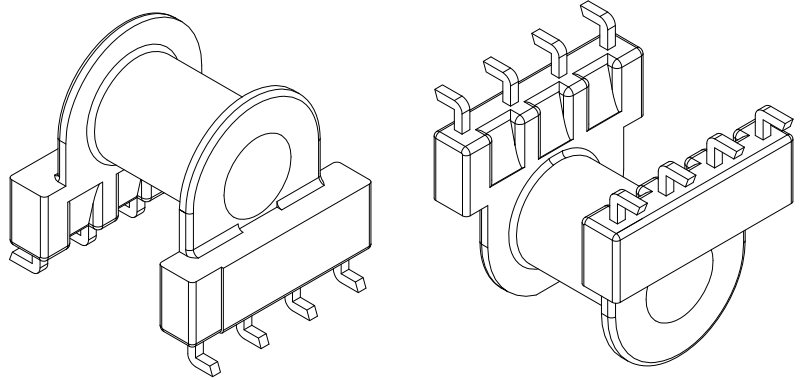
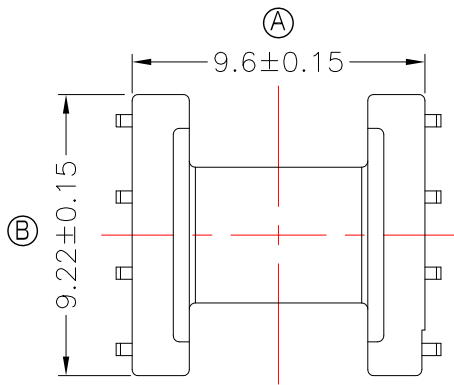




TRANSFORMER BOBBIN
INDUSTRIAL CO.,LTD.

Tel : 86-769-88789999 Fax : 86-769-88789989
http:// tbi-tw.com e-mail : tb6688@ms46.hinet.net

REVISIONS				
REV	SYM	DRAFTER	CHECKER	DATE
1		X.H.GU	G.F.YANG	08/15/16
2				
3				



Pull strength of Pin : 1.0 Kg Min.

DWG NO.	EP7L-8P-L-2.5V-D4-11				
PART NO.	MATERIAL (BOBBIN)	MATERIAL (TERMINAL)	TERMINAL (PLATING)	PIN ALLOCATION	NOTE
TBI-103-08441.1103	PM-9630	PB	Sn	ALL PIN PL=10.65±0.15	
TBI-103-08441.1113	PM-9630	PB	Sn	ALL PIN PL=12.00±0.15	
	TOLERANCE:0<L<4:±0.1 4<L<16:±0.2 16<L<63:±0.3			UNIT : m/m	SCALE 4 : 1
Finish:	1. PB wire Immersion Sn on terminal : Thickness:Sn plating,100,5 μ m (200 μ inches) min,Base nickel 1-2.5 μ m (40-100 μ inches) min. 2. CP wire Immersion Sn on terminal : Thickness:Sn plating,100,5 μ m (200 μ inches) min. 3. Coplanarity deviation: 0.10 mm (0.004 inches) max.				REV 1