

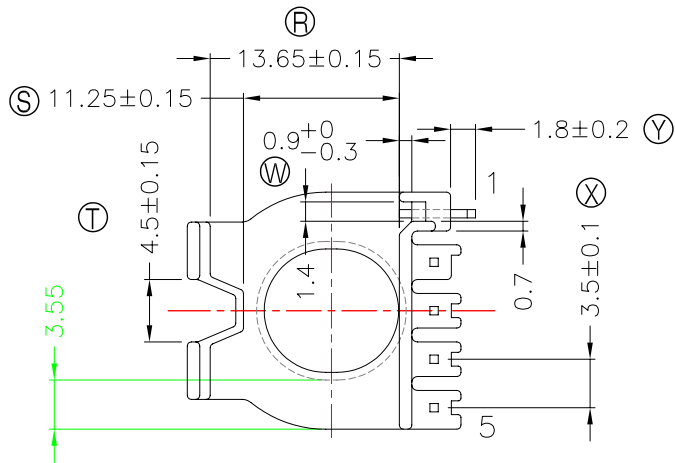
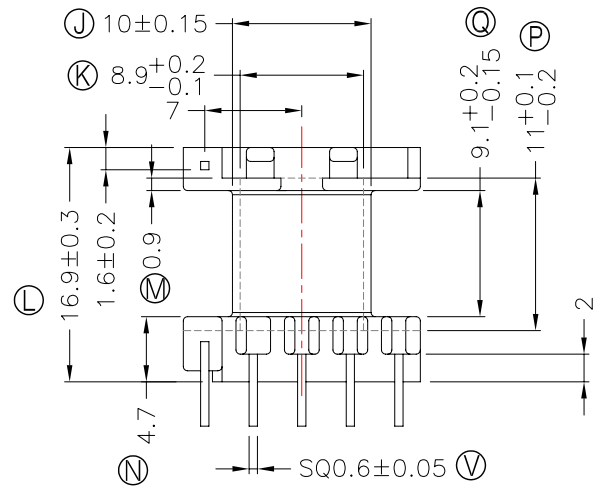
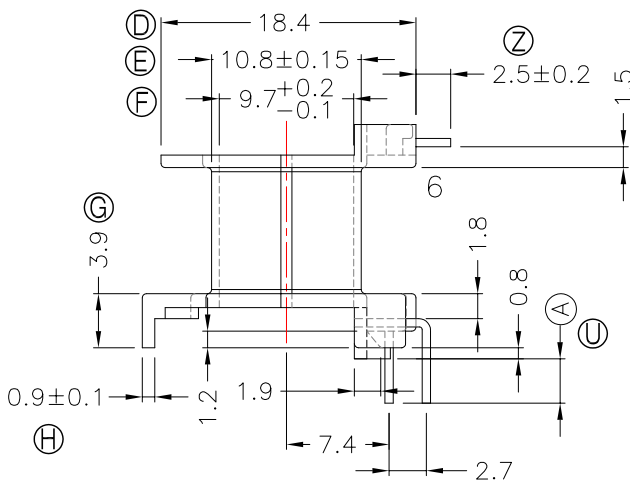
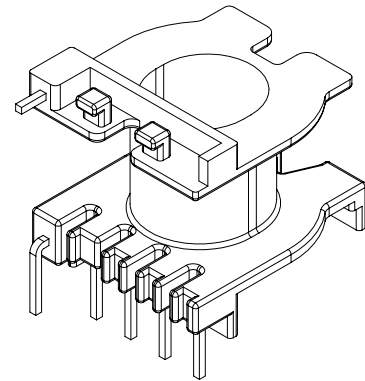
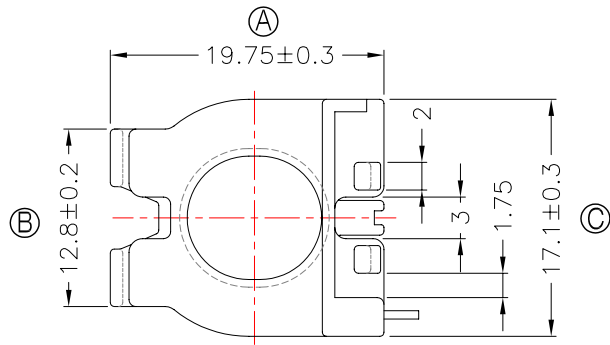


TRANSFORMER BOBBIN  
INDUSTRIAL CO.,LTD.

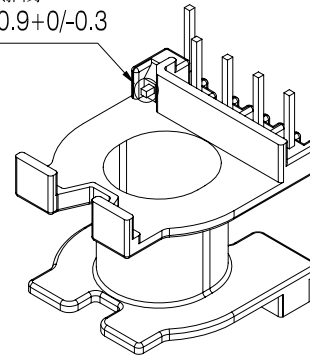
Tel : 86-769-88789999 Fax : 86-769-88789999  
http:// tbi-tw.com e-mail : tb6688@ms46.hinet.net

REVISIONS

REV	SYM	DRAFTER	CHECKER	DATE
1		X.X.YUAN	G.F.YANG	01/16/15
2				
3				



PIN#1根部須插穿  
規格:PIN露出凹槽0.9+0/-0.3



NOTE:

WINDING SPACE:9.1mm\*3.55mm=32.305mm<sup>2</sup>  
與TBI-246-01011.11C(CR23-16.6-CASE-A-11)配套使用;

DWG NO. CR23-16.6-6P-TH-A-11

PART NO.	MATERIAL (BOBBIN)	MATERIAL (TERMINAL)	TERMINAL (PLATING)	PIN ALLOCATION	NOTE
TBI-246-01011.1106	PM-9630	CP WIRE	Sn	ALL PIN (A)=5.0±0.3	S
TBI-246-01011.1116	PM-9630	CP WIRE	Sn	ALL PIN (A)=3.2±0.2	H
TBI-246-01011.1126	PM-9630	CP WIRE	Sn	CUT PIN#5 (A)=3.2±0.2	
TBI-246-01011.1136	PM-9630	CP WIRE	Sn	CUT PIN#5 (A)=5.0±0.2	

TOLERANCE: 0<L<=4:±0.1 4<L<=16:±0.2 16<L<=63:±0.3

UNIT : m / m

SCALE 1 : 1

Finish: 1. PB wire Immersion Sn on terminal : Thickness:Sn plating,100%,5 μm (200 μ inches) min,Base nickel 0.625 μm (25 μ inches) min.  
2. CP WIRE Immersion Sn on terminal : Thickness:Sn plating,100%,5 μm (200 μ inches) min.  
3. Coplanarity deviation: 0.10 mm (0.004 inches) max.

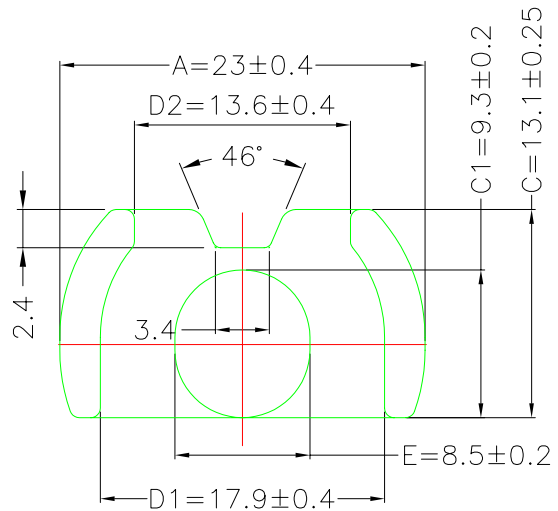
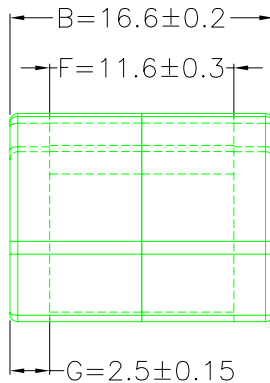
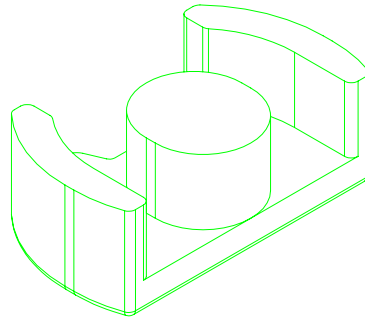
REV 1



**A-CORE**  
ELECTRICAL CO.

A-CORE JIANGMEN ELECTRONICS CO.,LTD  
 江门安磁电子有限公司  
 Tel: 86-750-3867791 Fax : 86-750-3867787

REVISIONS				
REV	SYM	DRAFTER	CHECKER	DATE
①		X.H.GU	G.F.YANG	07/17/14
②				
③				



### Core Set Parameters

$A_e=64.8\text{mm}^2$   
 $L_e=43.7\text{mm}$   
 $C1=0.674\text{mm}^{-1}$   
 $V_e=2831.76\text{mm}^3$

DWG NO.	CR23/16.6				
PART NO.	MATERIAL (BOBBIN)	MATERIAL (TERMINAL)	TERMINAL (PLATING)	PIN ALLOCATION	NOTE
CR23/16.6	JPP-44A				
CR23/16.6	JPP-95				

Finish:		TOLERANCE:0<L<=4:±0.1 4<L<=16:±0.2 16<L<=63:±0.3	UNIT : m/m	SCALE 1:1	
				REV	1

**A-CORE**

A-CORE JIANGMEN ELECTRONICS CO.,LTD  
 江門安磁電子有限公司

**TBI**

TRANSFORMER BOBBIN  
 INDUSTRIAL CO.,LTD.

ELECTRICAL CO. Tel : 86-750-3867791 Fax : 86-750-3867787

Tel : 86-769-88789999 Fax : 86-769-88789989

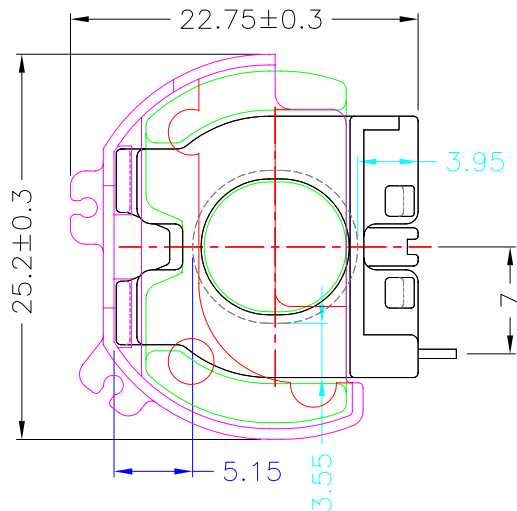
e-mail : sales@acore-ferrite.com

http:// tbi-tw.com e-mail : tb6688@ms46.hinet.net

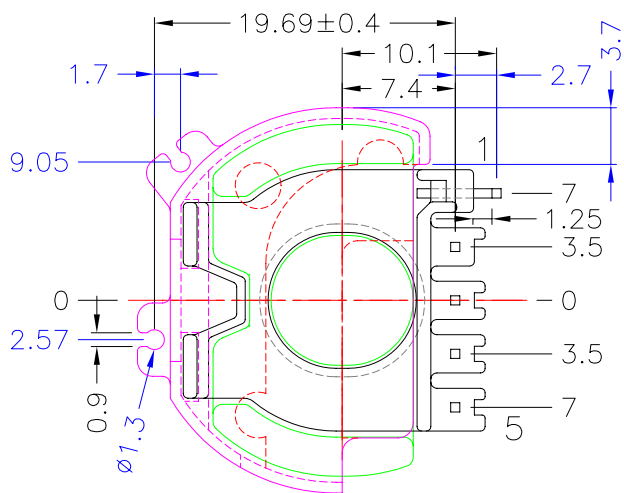
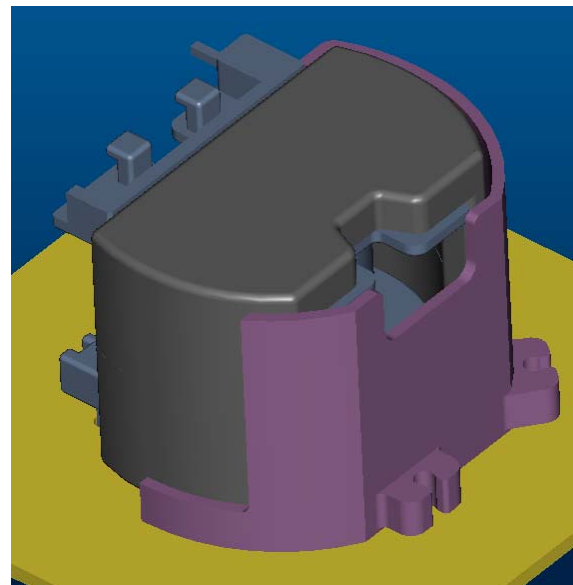
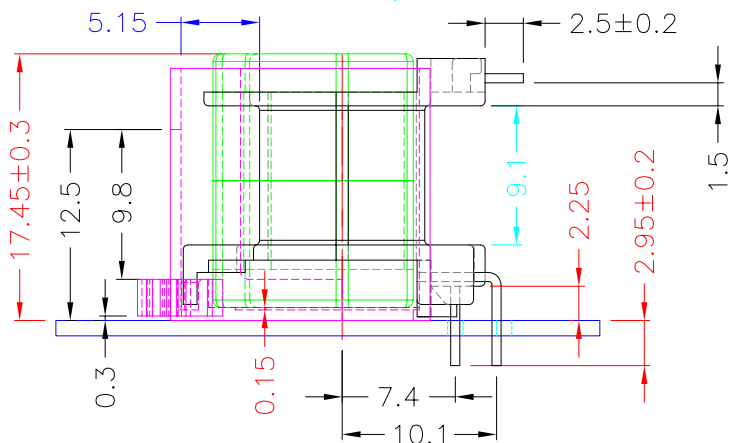
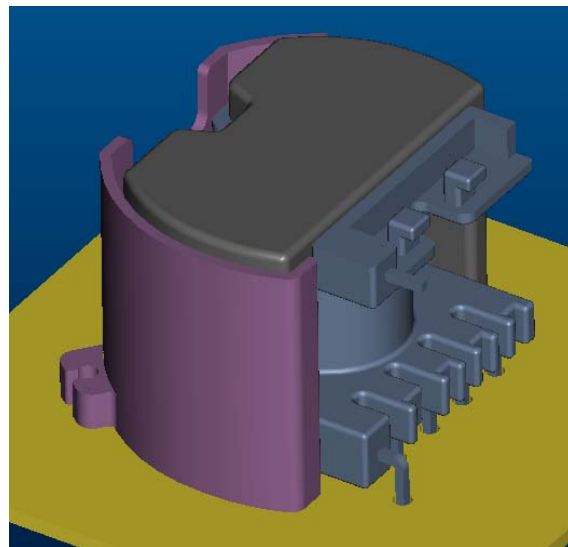
REVISIONS

REV	SYM	DRAFTER	CHECKER	DATE
△1		X.H.GU	G.F.YANG	01/16/15
△2				
△3				

TOP

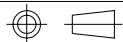


TOP



BOTTOM

ITEM	PART NO.	MATERIAL	DWG NO.	Core Set Parameters
CORE	CR23/16.6	JPP-44A		Ae=64.8mm <sup>2</sup> Le=43.7mm Cl=0.674mm <sup>-1</sup> Ve=2831.76mm <sup>3</sup>
CORE	CR23/16.6	JPP-95		
BOBBIN	TBI-246-01011.11XX		CR23-16.6-6P-TH-A-11	
CASE	TBI-246-01011.11C		CR23-16.6-CASE-A-11	
			UNIT : m/m	SCALE 1 : 1



REV 1