

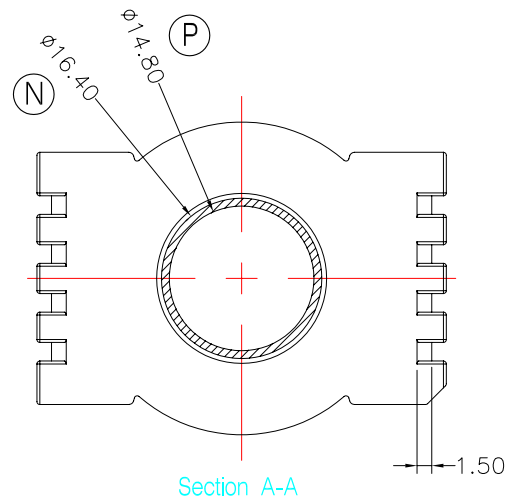
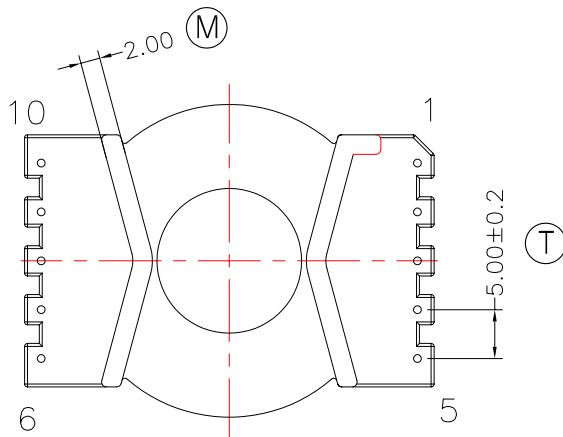
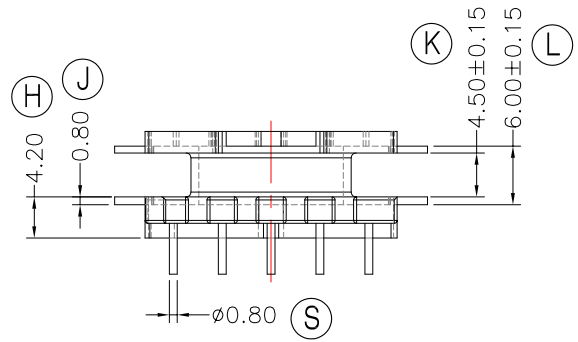
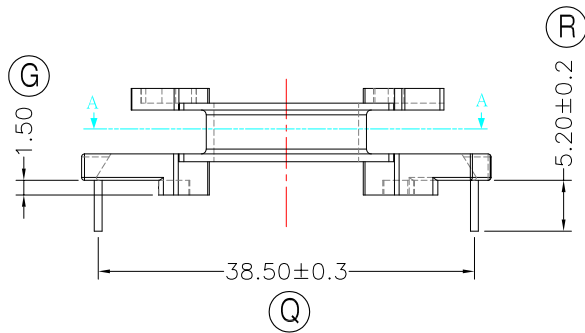
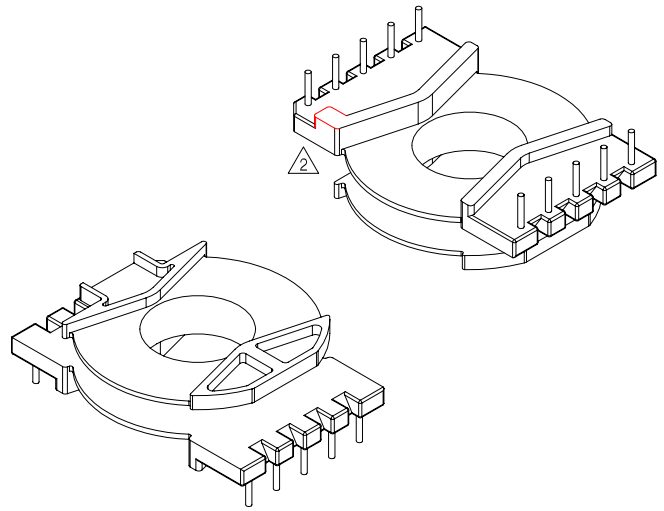
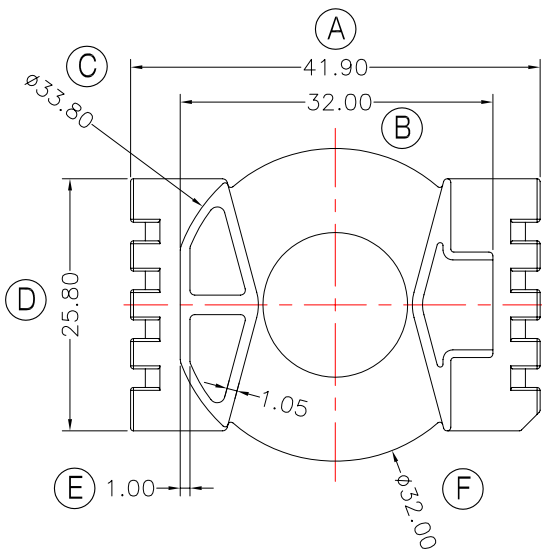


**TRANSFORMER BOBBIN  
INDUSTRIAL CO.,LTD.**

Tel : 86-769-88789999 Fax : 86-769-88789989  
http:// tbi-tw.com e-mail : tb6688@ms46.hinet.net

REVISIONS

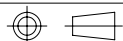
REV	SYM	DRAFTER	CHECKER	DATE
①		X.H.GU	G.F.YANG	05/22/10
②		YAN.TANG	G.F.YANG	09/15/10
③				



Section A-A

DWG NO. PQ38-12.6-10P-TH-A-11

PART NO.	MATERIAL (BOBBIN)	MATERIAL (TERMINAL)	TERMINAL (PLATING)	PIN ALLOCATION	NOTE
TBI-216-14011.1106	PM-9630	CP WIRE	Sn	ALL PIN	S
					H



TOLERANCE: 0<L<=4:±0.1 4<L<=16:±0.2 16<L<=63:±0.3

UNIT : m / m

SCALE 1 : 1

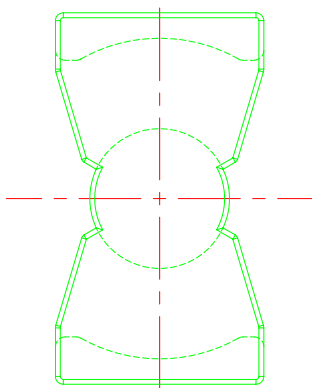
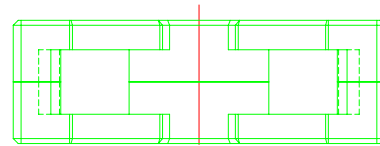
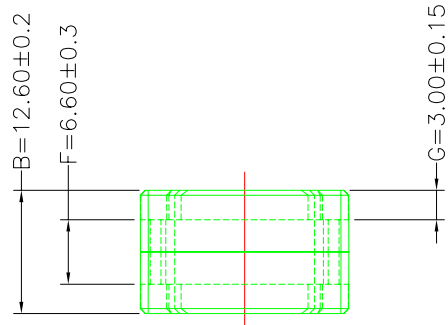
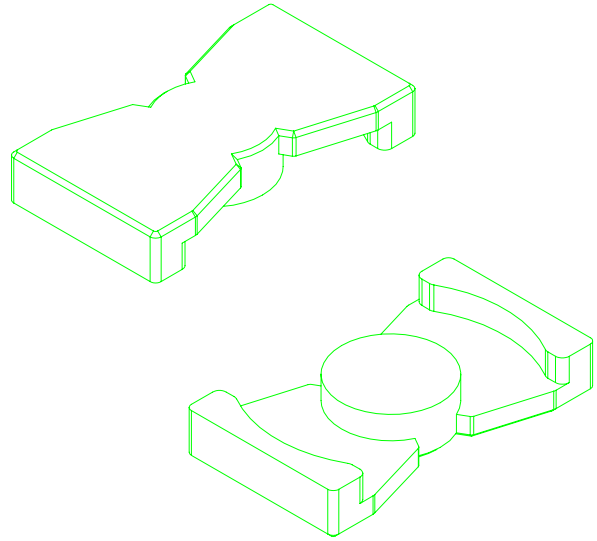
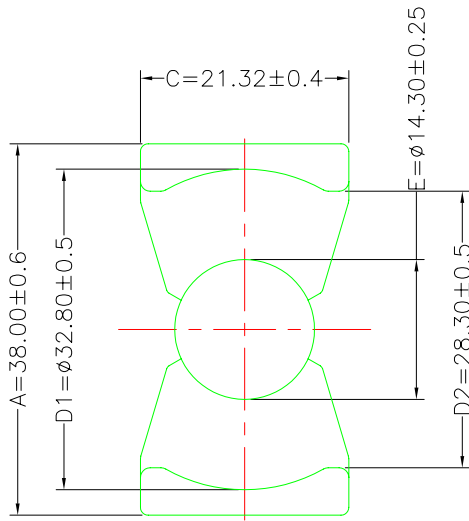
Finish: 1. PB wire Immersion Sn on terminal : Thickness:Sn plating,100,5 μm (200 μ inches) min,Base nickel 0.625 μm (25 μ inches) min.  
2. CP wire Immersion Sn on terminal : Thickness:Sn plating,100,5 μm (200 μ inches) min.  
3. Coplanarity deviation: 0.10 mm (0.004 inches) max.

REV 2

**A-CORE**  
ELECTRICAL CO.

A-CORE JIANGMEN ELECTRONICS CO.,LTD  
江門安磁電子有限公司  
Tel : 86-750-3867791 Fax : 86-750-3867787

REVISIONS				
REV	SYM	DRAFTER	CHECKER	DATE
1		X.H.GU	G.F.YANG	05/22/10
2				
3				



## Core Set Parameters

A1 (Limbs): 154.9mm<sup>2</sup>  
A2(Back wall) :104.731mm<sup>2</sup>  
A3(Center post) : 160.61mm<sup>2</sup>  
Ae=122mm<sup>2</sup>  
Le=46.2mm  
C1=0.379mm<sup>-1</sup>  
Ve=5636.4mm<sup>3</sup>

DWG NO.	PQ38-12.6- CORE				
PART NO.	MATERIAL (CORE)	MATERIAL (TERMINAL)	TERMINAL (PLATING)	PIN ALLOCATION	NOTE
PQ38-12.6	JPP-44A				
PQ38-12.6	JPP-95				

Finish:	TOLERANCE: 0<L<=4:±0.1 4<L<=16:±0.2 16<L<=63:±0.3	UNIT : m/m	SCALE 1 : 1
			REV 1

**A-CORE**

A-CORE JIANGMEN ELECTRONICS CO.,LTD  
江門安磁電子有限公司

**TBI**

TRANSFORMER BOBBIN  
INDUSTRIAL CO.,LTD.

ELECTRICAL CO. Tel : 86-750-3867791 Fax : 86-750-3867787

Tel : 86-769-88789999 Fax : 86-769-88789989

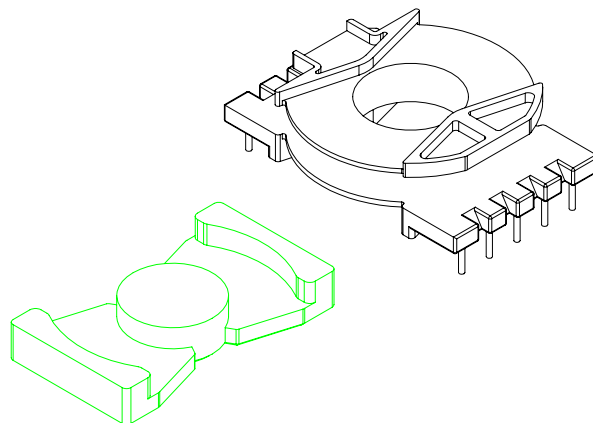
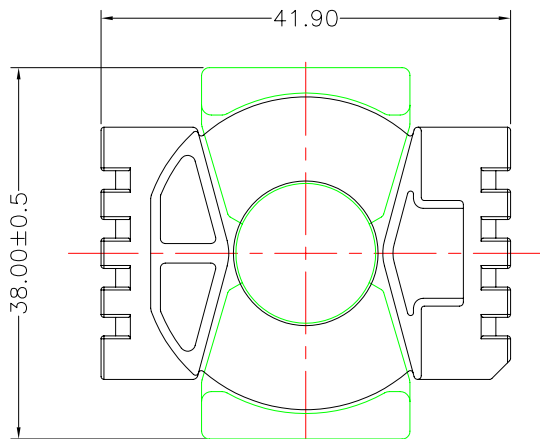
e-mail : sales@acore-ferrite.com

http:// tbi-tw.com e-mail : tb6688@ms46.hinet.net

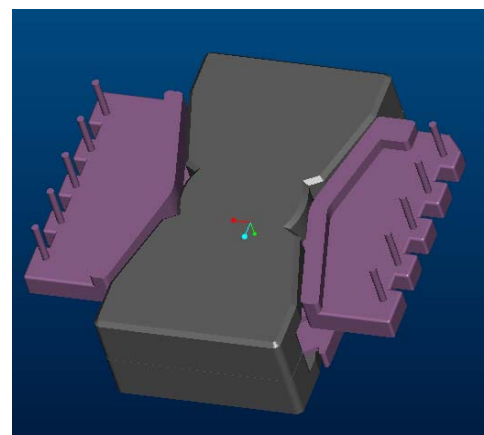
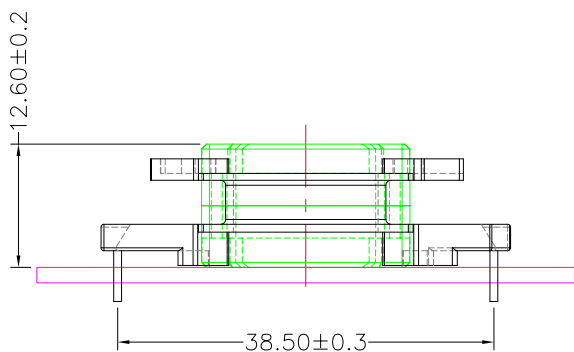
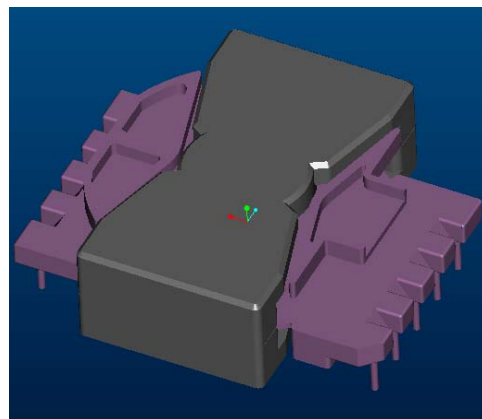
REVISIONS

REV	SYM	DRAFTER	CHECKER	DATE
△1		X.H.GU	G.F.YANG	05/22/10
△2		YAN.TANG	G.F.YANG	09/15/10
△3				

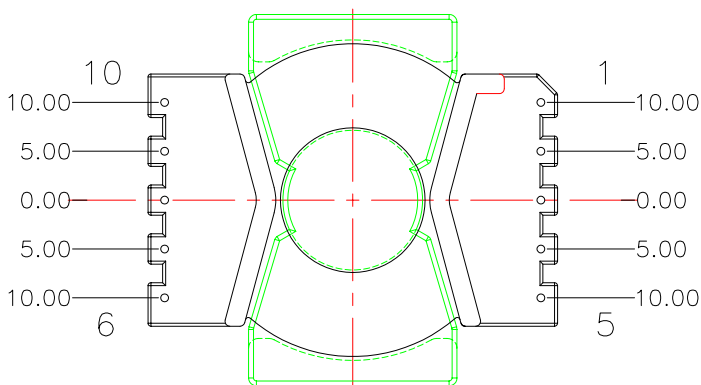
TOP



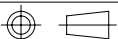
TOP



BOTTOM



BOTTOM

ITEM	PART NO.	MATERIAL	DWG NO.	Core Set Parameters
CORE	PQ38-12.6	JPP-44A		$A_e=122\text{mm}^2$ $L_e=46.2\text{mm}$ $C1=0.379\text{mm}^{-1}$ $V_e=5636.4\text{mm}^3$
CORE	PQ38-12.6	JPP-95		
BOBBIN	TBI-216-14011.11XX		PQ38-12.6-10P-TH-A-11	
				UNIT : m / m
				SCALE 1 : 1
				REV 2