

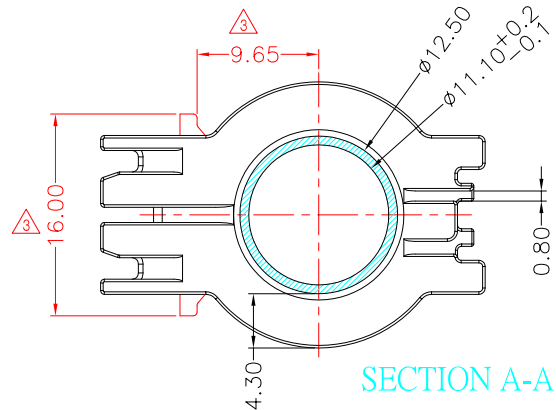
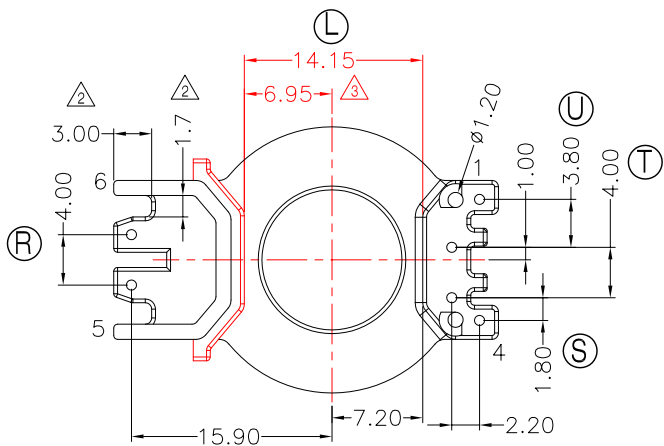
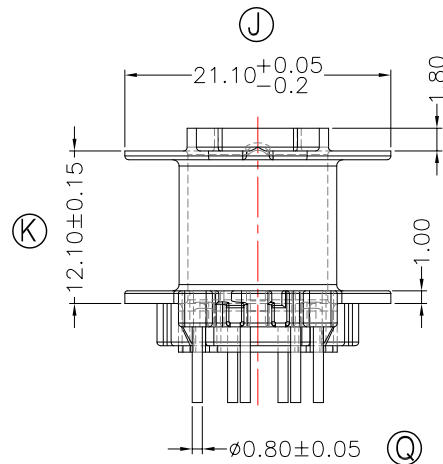
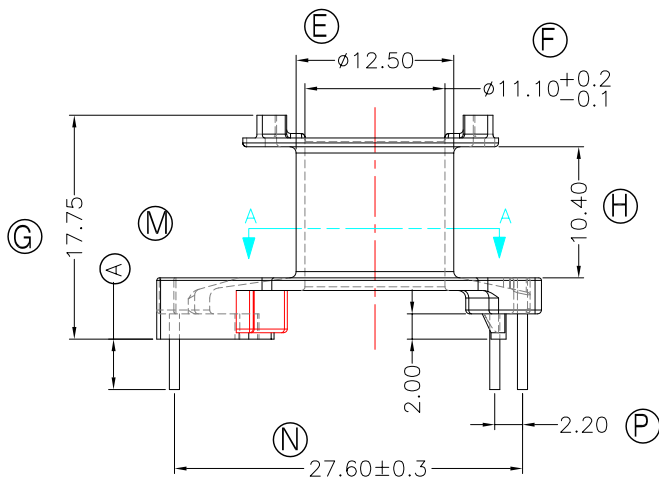
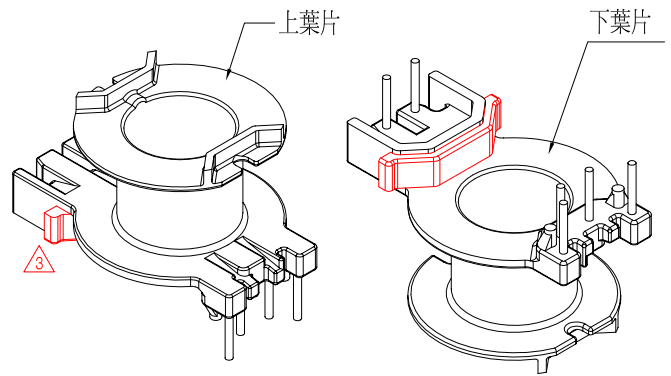
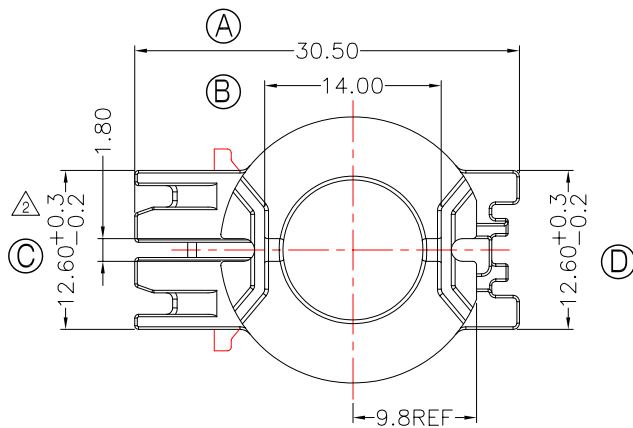


TRANSFORMER BOBBIN
INDUSTRIAL CO.,LTD.

Tel : 86-769-88789999 Fax : 86-769-88789989
http:// tbi-tw.com e-mail : tb6688@ms46.hinet.net

REVISIONS

REV	SYM	DRAFTER	CHECKER	DATE
①		X.H.GU	G.F.YANG	10/12/11
②		X.H.GU	G.F.YANG	12/12/11
③		X.H.GU	G.F.YANG	03/13/12



NOTE:

1. 焊錫前拉力 : 1.0Kg Min, 焊錫後拉力 : 1.5Kg Min.
2. 強度任意一點3.0Kg Min. 以下測試點除外(上下葉片強度任意一點1.0Kg Min)
3. PIN來回折彎90度3次不斷.

DWG NO. RM10-18.6-6P-TH-C7-12

PART NO.	MATERIAL (BOBBIN)	MATERIAL (TERMINAL)	TERMINAL (PLATING)	PIN ALLOCATION	NOTE
TBI-208-04371.1206	PM-9820(BK)	CP WIRE	Sn	ALL PIN (A)=4.0±0.3	S
TBI-208-04371.1216	PM-9820(BK)	CP WIRE	Sn	ALL PIN (A)=3.0±0.3	H

TOLERANCE: 0<L<=4:±0.1 4<L<=16:±0.2 16<L<=63:±0.3

UNIT : m / m

SCALE 1 : 1

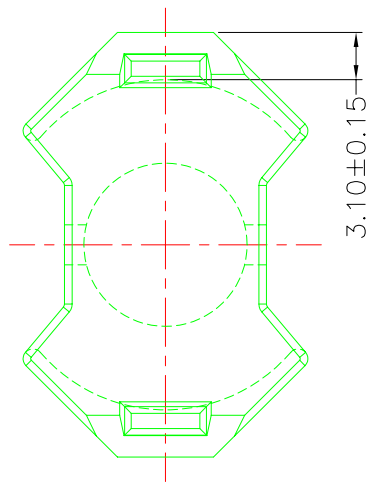
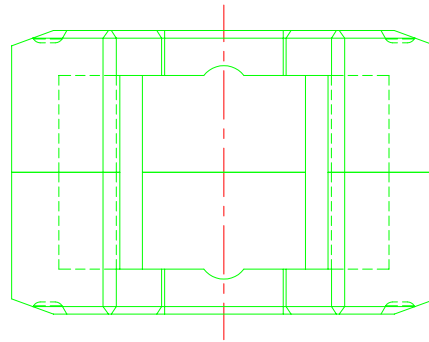
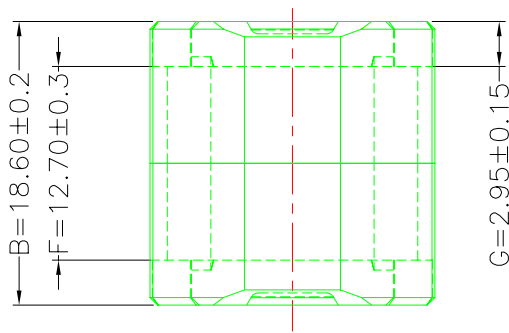
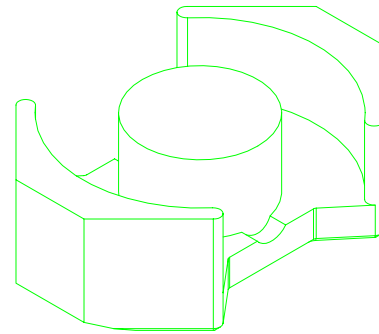
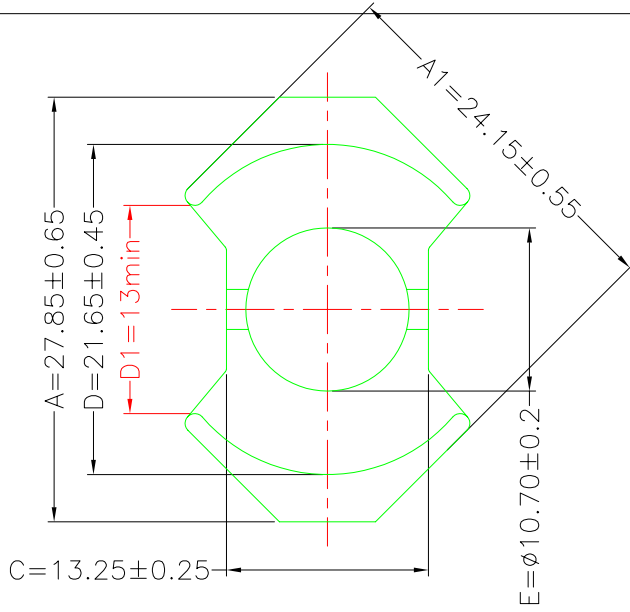
Finish: 1. PB wire Immersion Sn on terminal : Thickness:Sn plating,100,5 μm (200 μ inches) min,Base nickel 0.625 μm (25 μ inches) min.
2. CP wire Immersion Sn on terminal : Thickness:Sn plating,100,5 μm (200 μ inches) min.
3. Coplanarity deviation: 0.10 mm (0.004 inches) max.

REV 3

A-CORE
ELECTRICAL CO.

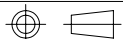
A-CORE JIANGMEN ELECTRONICS CO.,LTD
 江门安磁电子有限公司
 Tel: 86-750-3867791 Fax : 86-750-3867787

REVISIONS				
REV	SYM	DRAFTER	CHECKER	DATE
1		S.Y.TANG	G.F.YANG	12/20/08
2				
3				



$A_e=98\text{mm}^2$
 $L_e=44\text{mm}$
 $C1=0.449\text{mm}^{-1}$

DWG NO.	RM10/18.6 CORE				
PART NO.	MATERIAL (BOBBIN)	MATERIAL (TERMINAL)	TERMINAL (PLATING)	PIN ALLOCATION	NOTE
RM10/18.6	JPP-44A				
RM10/18.6	JPP-95				



Finish:

UNIT : m/m

SCALE 2:1

REV 1

A-CORE

A-CORE JIANGMEN ELECTRONICS CO.,LTD
江門安磁電子有限公司

TBI

TRANSFORMER BOBBIN
INDUSTRIAL CO.,LTD.

ELECTRICAL CO. Tel : 86-750-3867791 Fax : 86-750-3867787

Tel : 86-769-88789999 Fax : 86-769-88789989

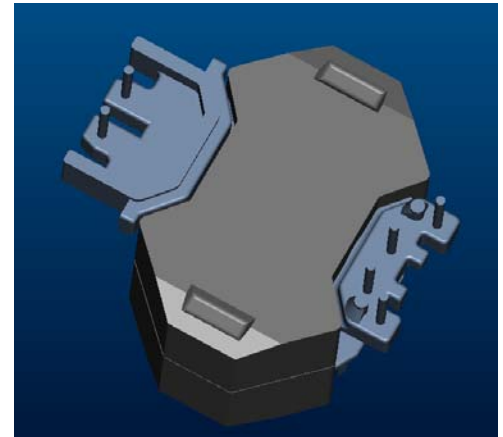
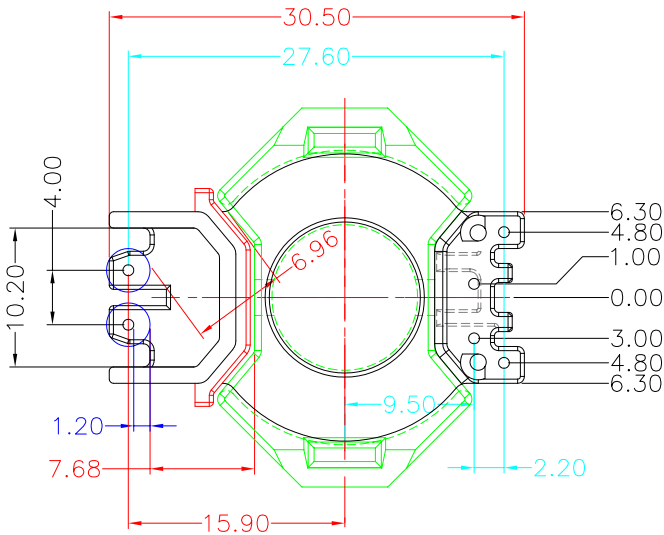
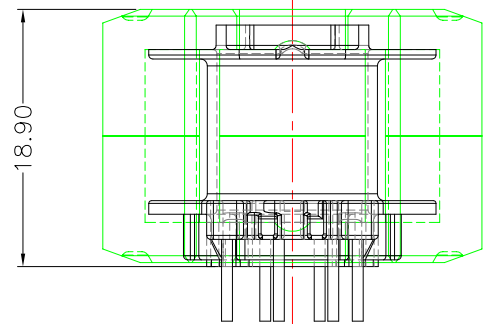
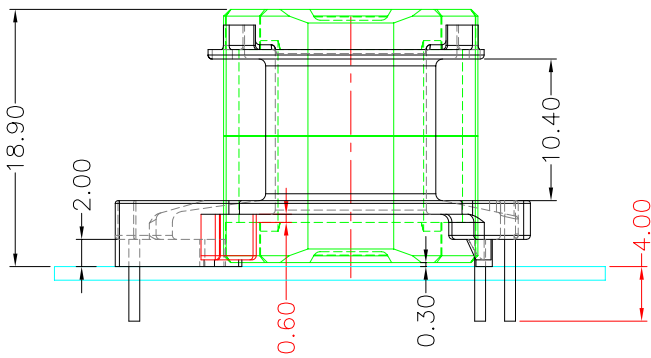
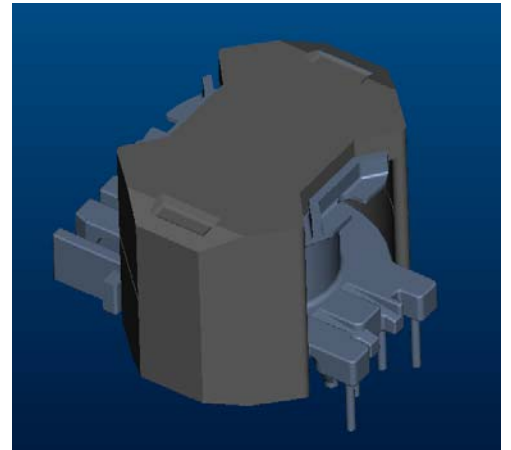
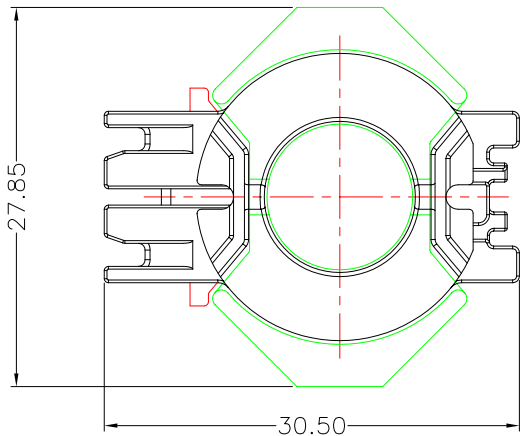
e-mail : sales@acore-ferrite.com

http:// tbi-tw.com e-mail : tb6688@ms46.hinet.net

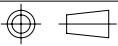
REVISIONS

REV	SYM	DRAFTER	CHECKER	DATE
△1		X.H.GU	G.F.YANG	10/12/11
△2		X.H.GU	G.F.YANG	12/12/11
△3		X.H.GU	G.F.YANG	03/13/12

TOP



BOTTOM

ITEM	PART NO.	MATERIAL	DWG NO.	Core Set Parameters	
CORE	RM10/18.6	JPP-44A		$A_e=98\text{mm}^2$ $L_e=44\text{mm}$ $C_1=0.449\text{mm}^{-1}$	
CORE	RM10/18.6	JPP-95			
BOBBIN	TBI-208-04371.12XX		RM10-18.6-6P-TH-C7-12		
				UNIT : m / m	SCALE 1 : 1
				REV	3