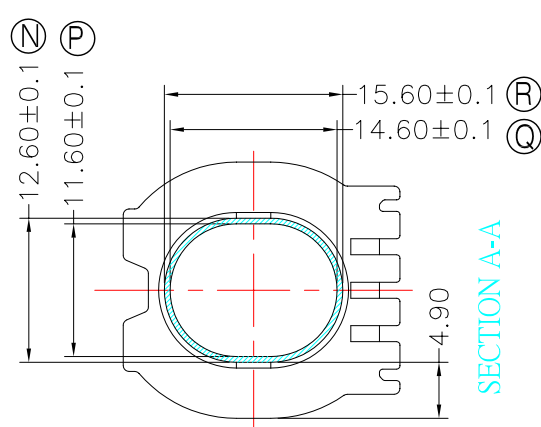
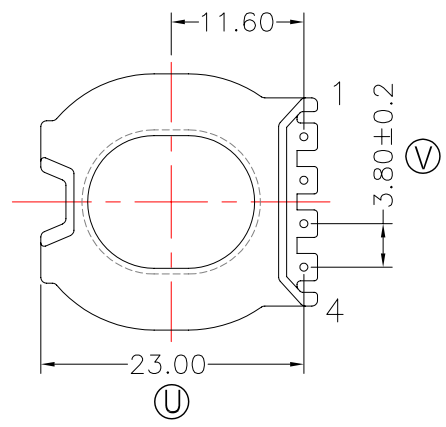
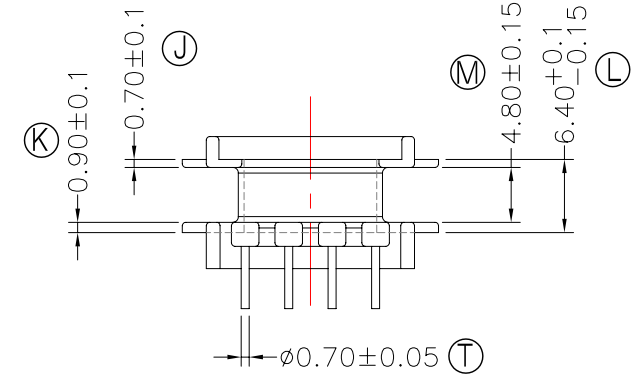
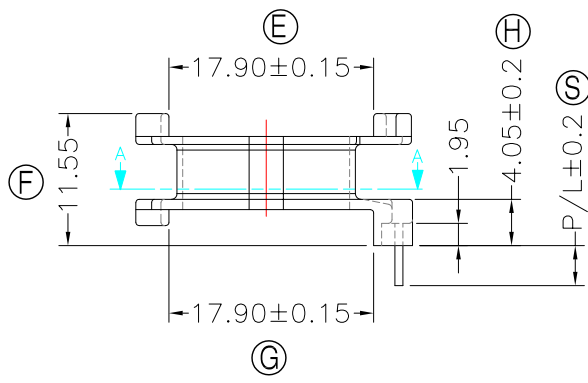
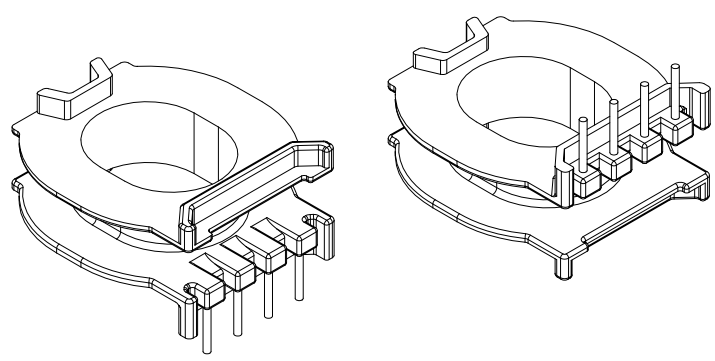
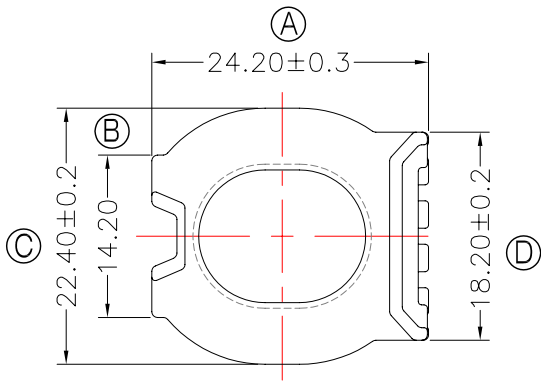




TRANSFORMER BOBBIN
INDUSTRIAL CO.,LTD.

Tel : 86-769-88789999 Fax : 86-769-88789989
http:// tbi-tw.com e-mail : tb6688@ms46.hinet.net

REVISIONS				
REV	SYM	DRAFTER	CHECKER	DATE
1		X.H.GU	G.F.YANG	01/08/15
2				
3				



Winding Space=4.8*4.9=23.52mm²

DWG NO.	ATQ27-12.1N-4P-TH-C-11				
PART NO.	MATERIAL (BOBBIN)	MATERIAL (TERMINAL)	TERMINAL (PLATING)	PIN ALLOCATION	NOTE
TBI-238-03031.1106	PM-9630	CP WIRE	Sn	ALL PIN P/L=3.5±0.2	S
TBI-238-03031.1116	PM-9630	CP WIRE	Sn	ALL PIN P/L=5.0±0.2	H
TBI-238-03031.1126	PM-9630	CP WIRE	Sn	ALL PIN P/L=2.6±0.2	
TBI-238-03031.1136	PM-9630	CP WIRE	Sn	ALL PIN P/L=2.5±0.2	
	TOLERANCE: 0<L<=4±0.1 4<L<=16±0.2 16<L<=63±0.3			UNIT : m / m	SCALE 1 : 1

Finish: 1. PB wire Immersion Sn on terminal : Thickness:Sn plating,100%,5 μm (200 μ inches) min,Base nickel 0.625 μm (25 μ inches) min.
2. CP wire Immersion Sn on terminal : Thickness:Sn plating,100%,5 μm (200 μ inches) min.
3. Coplanarity deviation: 0.10 mm (0.004 inches) max.

REV	1
-----	---