

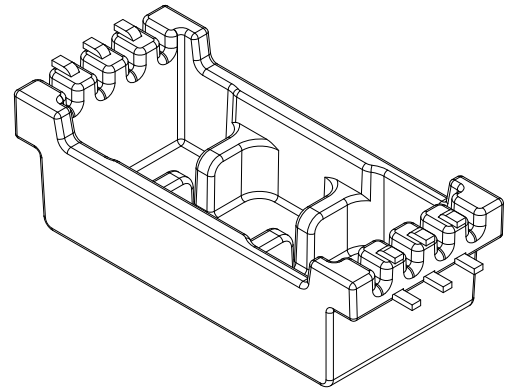
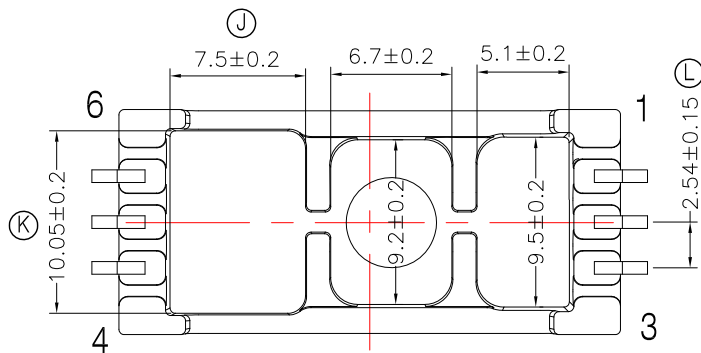
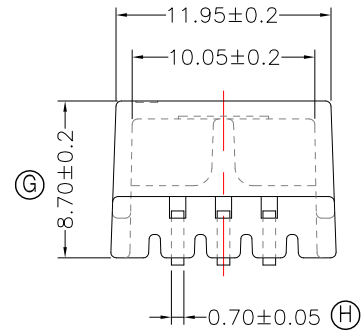
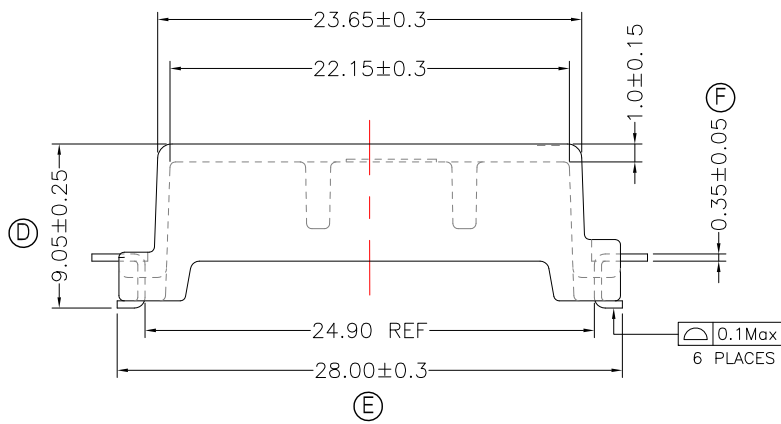
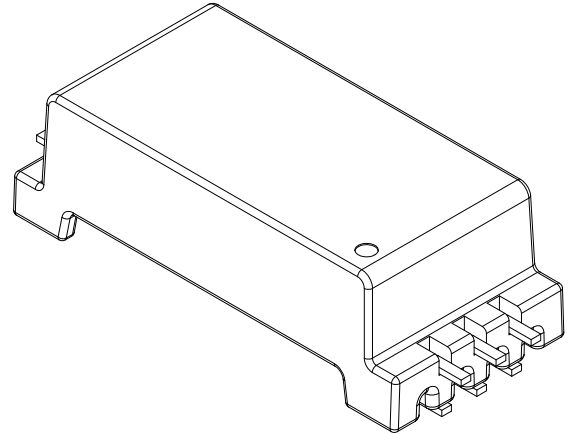
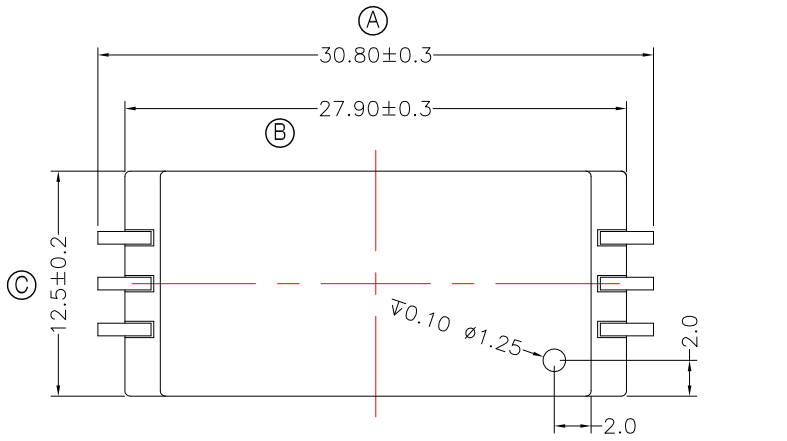


TRANSFORMER BOBBIN
INDUSTRIAL CO.,LTD.

Tel : 86-769-88789999 Fax : 86-769-88789989
http:// tbi-tw.com e-mail : tb6688@ms46.hinet.net

REVISIONS

REV	SYM	DRAFTER	CHECKER	DATE
①		X.H.GU	G.F.YANG	05/12/21
②				
③				



注: PIN切端面需上錫處理

DWG NO. B1231-6P-J-A3-22

PART NO.	MATERIAL (BOBBIN)	MATERIAL (TERMINAL)	TERMINAL (PLATING)	PIN ALLOCATION	NOTE
TBI-120-05131.2203	DAP,WH-9100 (BK)	PB (C5191)	Sn	ALL PIN	

TOLERANCE: $0 < L \leq 4: \pm 0.1$ $4 < L \leq 16: \pm 0.2$ $16 < L \leq 63: \pm 0.3$ UNIT : m / m SCALE 1 : 1

Finish: 1. PB wire Immersion Sn on terminal : Thickness:Sn plating,100%, $5 \mu m$ (200μ inches) min,Base nickel $0.625 \mu m$ (25μ inches) min.
2. CP wire Immersion Sn on terminal : Thickness:Sn plating,100%, $5 \mu m$ (200μ inches) min.
3. Coplanarity deviation: 0.10 mm (0.004 inches) max.

REV 1