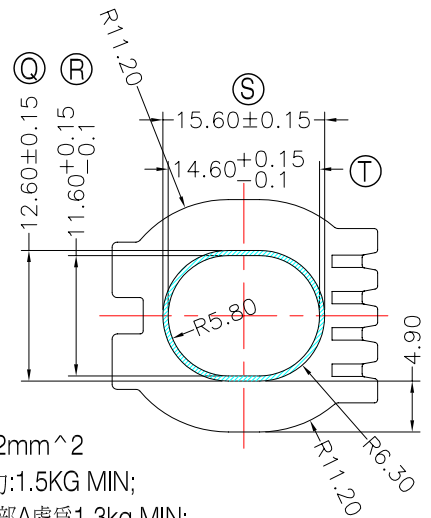
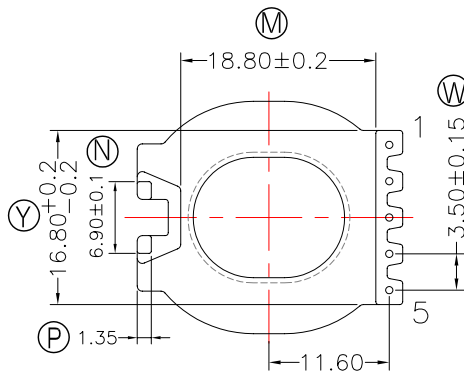
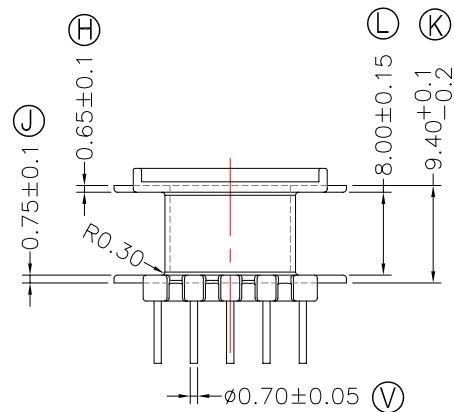
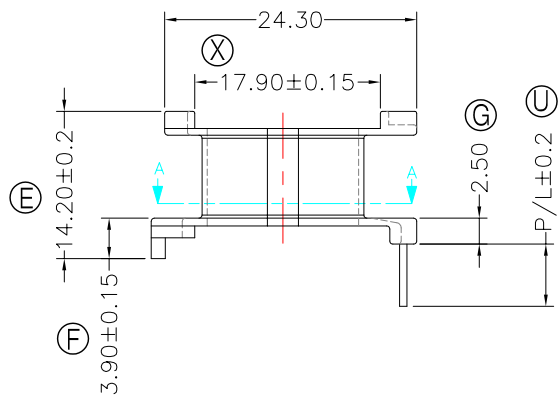
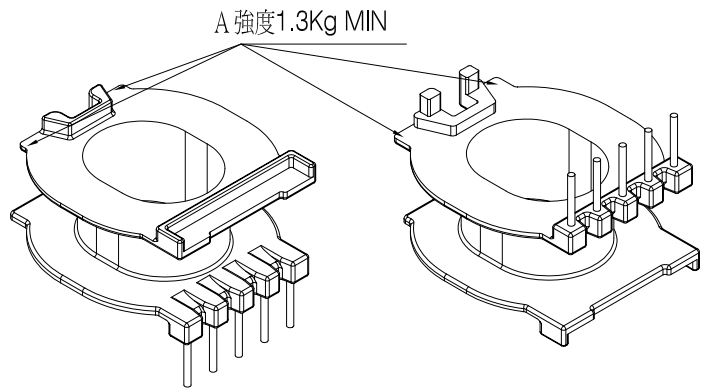
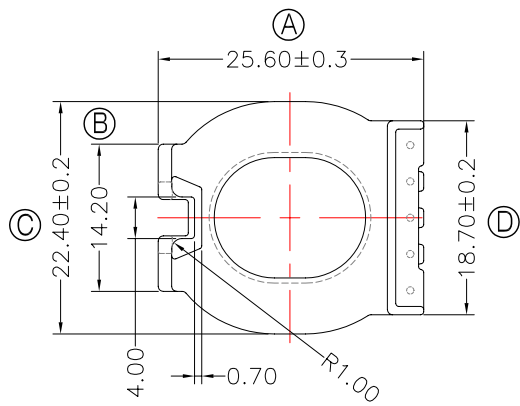




TRANSFORMER BOBBIN
INDUSTRIAL CO.,LTD.

Tel : 86-769-88789999 Fax : 86-769-88789998
http:// tbi-tw.com e-mail : tb6688@ms46.hinet.net

| REVISIONS | | | | |
|-----------|-----|---------|----------|----------|
| REV | SYM | DRAFTER | CHECKER | DATE |
| △1 | | X.H.GU | G.F.YANG | 12/15/16 |
| △2 | | | | |
| △3 | | | | |



NOTE:

- 耐壓4.0Kv /1.5mA 60S;
 - 焊錫溫度:450°±10° 3SEC
 - Winding Space=9.8*4.9=48.02mm²
 - 焊錫前拉力:1.0KG MIN,焊錫後拉力:1.5KG MIN;
 - 任一點的強度為1.8kg MIN;其中頂部A處為1.3kg MIN;
- 與TBI-238-48081.11C(ATQ27-15.7-1-CASE-H-11)配套使用;

SECTION A-A

DWG NO. ATQ27-15.7-1-5P-TH-H-11

| PART NO. | MATERIAL (BOBBIN) | MATERIAL (TERMINAL) | TERMINAL (PLATING) | PIN ALLOCATION | NOTE |
|--------------------|-------------------|---------------------|--------------------|---------------------|------|
| TBI-238-48081.1106 | PM-9630 | CP WIRE | Sn | ALL PIN P/L=6.5±0.2 | |
| TBI-238-48081.1116 | PM-9630 | CP WIRE | Sn | ALL PIN P/L=6.0±0.2 | |

TOLERANCE: 0<L<=4:±0.1 4<L<=16:±0.2 16<L<=63:±0.3

UNIT : m / m

SCALE 1 : 1

Finish: 1. PB wire Immersion Sn on terminal : Thickness:Sn plating,100%,5 μm (200 μ inches) min,Base nickel 0.625 μm (25 μ inches) min.
2. CP wire Immersion Sn on terminal : Thickness:Sn plating,100%,5 μm (200 μ inches) min.
3. Coplanarity deviation: 0.10 mm (0.004 inches) max.

REV 1

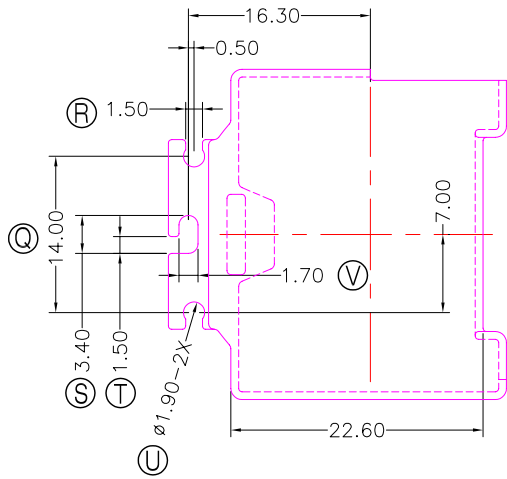
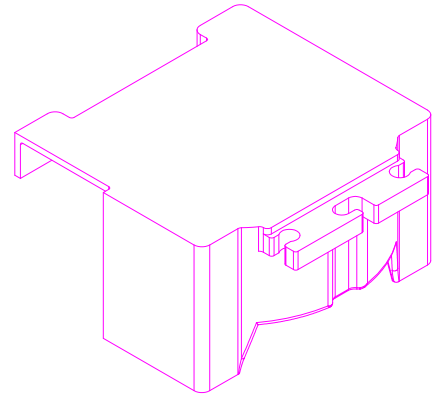
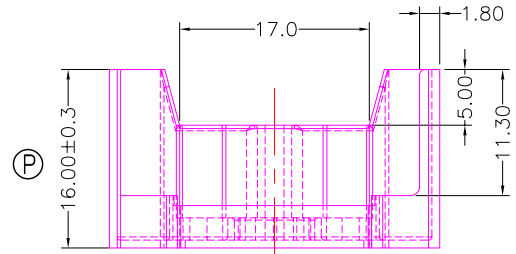
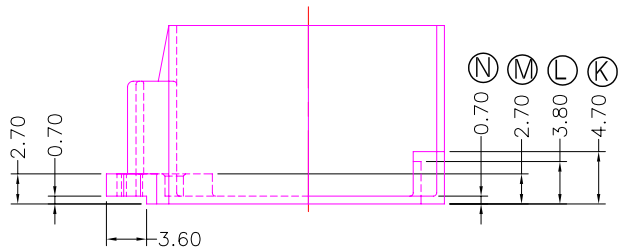
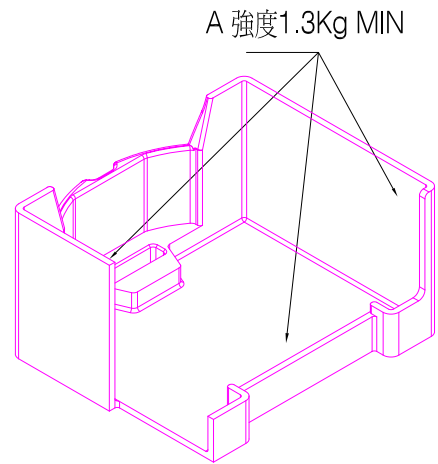
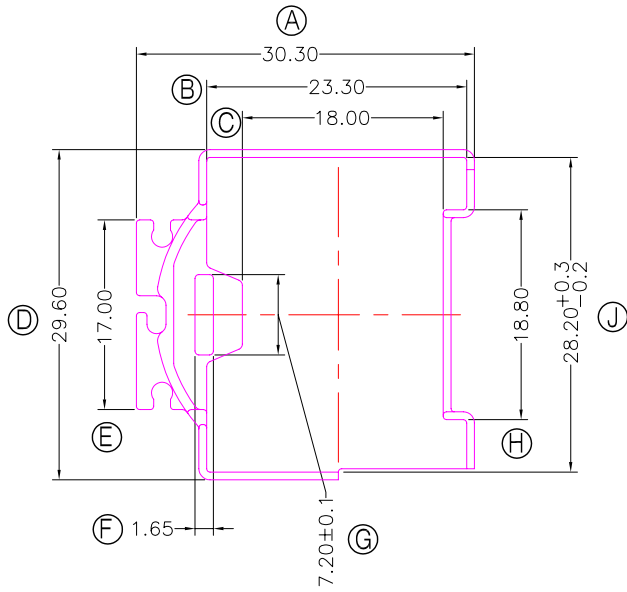


**TRANSFORMER BOBBIN
INDUSTRIAL CO.,LTD.**

Tel : 86-769-88789999 Fax : 86-769-88789989
http:// tbi-tw.com e-mail : tb6688@ms46.hinet.net

REVISIONS

| REV | SYM | DRAFTER | CHECKER | DATE |
|-----|-----|---------|----------|----------|
| 1 | | X.H.GU | G.F.YANG | 07/26/17 |
| 2 | | | | |
| 3 | | | | |



NOTE:

- 1.耐壓4.0Kv /1.5mA 60S;
- 2.任一點的強度為1.8kg MIN, 其中.A.處為1.3kg MIN
與TBI-238-48081.11XX(ATQ27-15.7-1-5P-TH-H-11)配套使用;

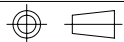
DWG NO. ATQ27-15.7-1-CASE-H-11

| PART NO. | MATERIAL (BOBBIN) | MATERIAL (TERMINAL) | TERMINAL (PLATING) | PIN ALLOCATION | NOTE |
|-------------------|-------------------|---------------------|--------------------|----------------|------|
| TBI-238-48081.11C | PM-9630 | NA | | | |

TBI-238-48081.11C

PM-9630

NA



TOLERANCE:0<L<=4:±0.1 4<L<=16:±0.2 16<L<=63:±0.3

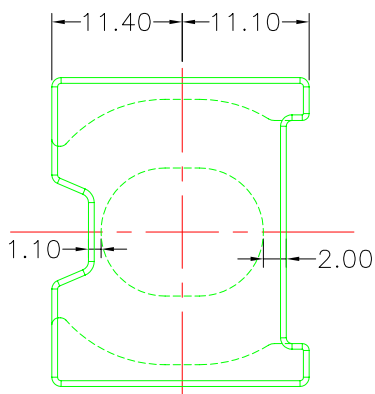
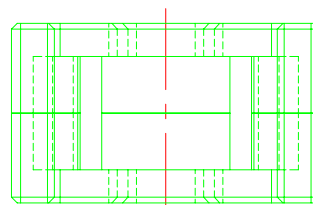
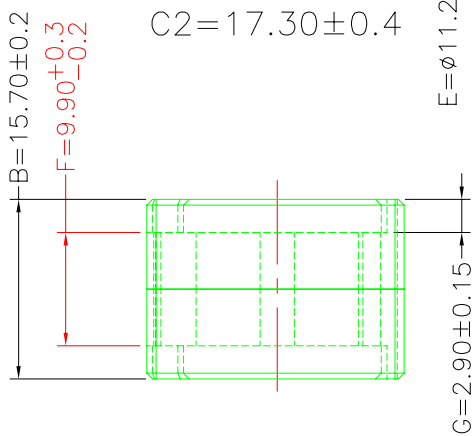
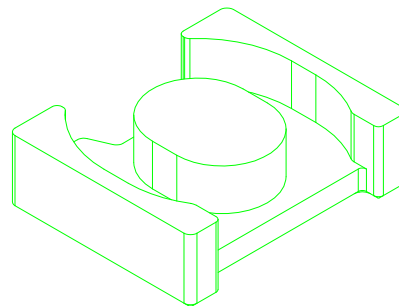
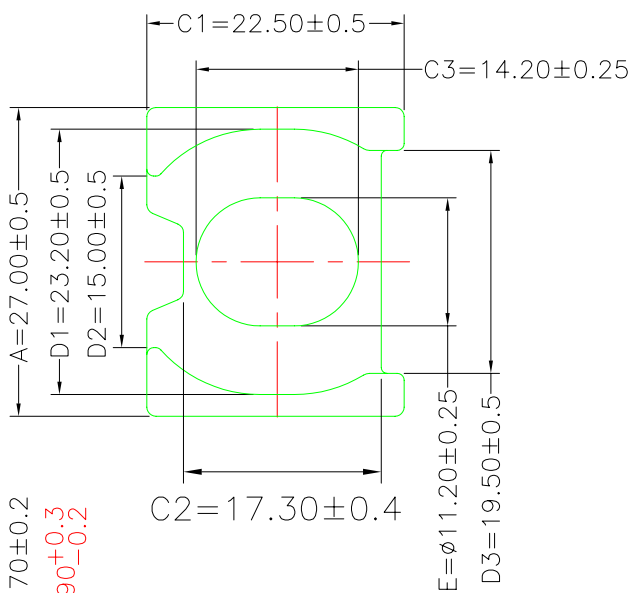
UNIT : m / m

SCALE 1 : 1

Finish: 1. PB wire Immersion Sn on terminal : Thickness:Sn plating,100%,5 μm (200 μ inches) min,Base nickel 0.625 μm (25 μ inches) min.
2. CP wire Immersion Sn on terminal : Thickness:Sn plating,100%,5 μm (200 μ inches) min.
3. Coplanarity deviation: 0.10 mm (0.004 inches) max.

REV 1

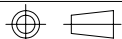
| REVISIONS | | | | |
|-----------|-----|---------|----------|----------|
| REV | SYM | DRAFTER | CHECKER | DATE |
| ① | | X.H.GU | G.F.YANG | 12/15/16 |
| ② | | | | |
| ③ | | | | |



Core Set Parameters

$A_e = 129 \text{mm}^2$
 $L_e = ? \text{mm}$
 $C_1 = ? \text{mm}^{-1}$
 $V_e = ? \text{mm}^3$

| | | | | |
|--------------|-------------------|--|--|------|
| DWG NO. | ATQ27/15.7-1-CORE | | | |
| PART NO. | MATERIAL (CORE) | | | NOTE |
| ATQ27/15.7-1 | JPP-44A | | | |
| ATQ27/15.7-1 | JPP-95 | | | |
| | | | | |
| | | | | |
| | | | | |
| | | | | |
| | | | | |
| | | | | |



TOLERANCE: $0 < L \leq 4 \pm 0.1$ $4 < L \leq 16 \pm 0.2$ $16 < L \leq 63 \pm 0.3$

UNIT : m / m

SCALE 1 : 1

REV 1

A-CORE

A-CORE JIANGMEN ELECTRONICS CO.,LTD
江門安磁電子有限公司

TBI

TRANSFORMER BOBBIN
INDUSTRIAL CO.,LTD.

ELECTRICAL CO. Tel : 86-750-3867791 Fax : 86-750-3867787

Tel : 86-769-88789999 Fax : 86-769-88789989

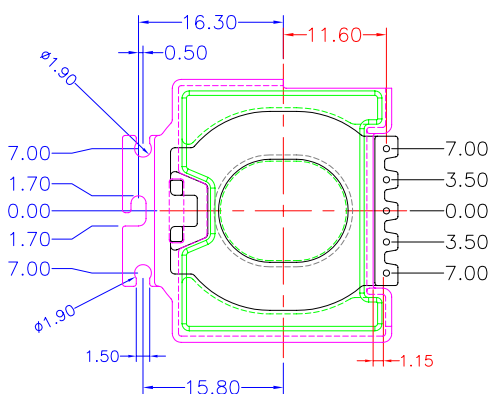
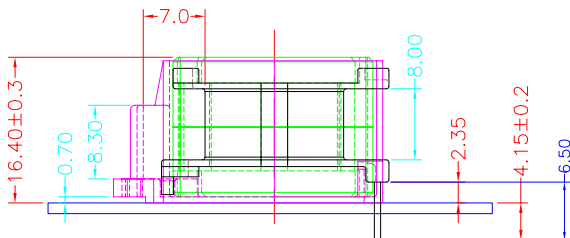
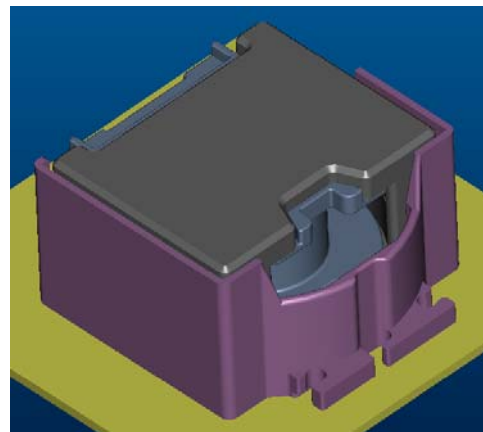
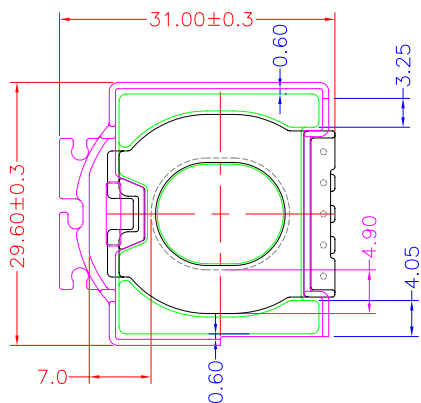
e-mail : sales@acore-ferrite.com

http:// tbi-tw.com e-mail : tb6688@ms46.hinet.net

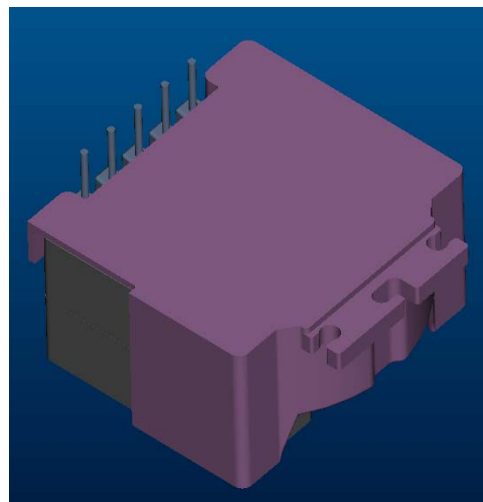
REVISIONS

| REV | SYM | DRAFTER | CHECKER | DATE |
|-----|-----|---------|----------|----------|
| △1 | | X.H.GU | G.F.YANG | 07/26/17 |
| △2 | | | | |
| △3 | | | | |

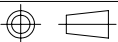
TOP



BOTTOM



BOTTOM

| ITEM | PART NO. | MATERIAL | DWG NO. | Core Set Parameters |
|--|--------------------|----------|-------------------------|--|
| CORE | ATQ27/15.7-1 | JPP-44A | | $A_e=129\text{mm}^2$ $L_e=?\text{mm}$ $C1=?\text{mm}^{-1}$ $V_e=?\text{mm}^3$ |
| CORE | ATQ27/15.7-1 | JPP-95 | | |
| BOBBIN | TBI-238-48081.11XX | | ATQ27-15.7-1-5P-TH-H-11 | |
| CASE | TBI-238-48081.11C | | ATQ27-15.7-1-CASE-H-11 | |
| | | | | |
|  UNIT : m/m | | | | SCALE 1 : 1 |
| | | | | REV 1 |