

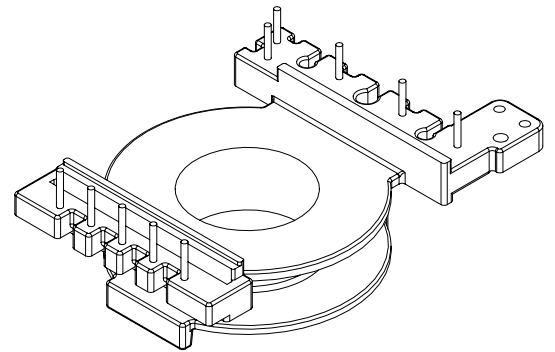
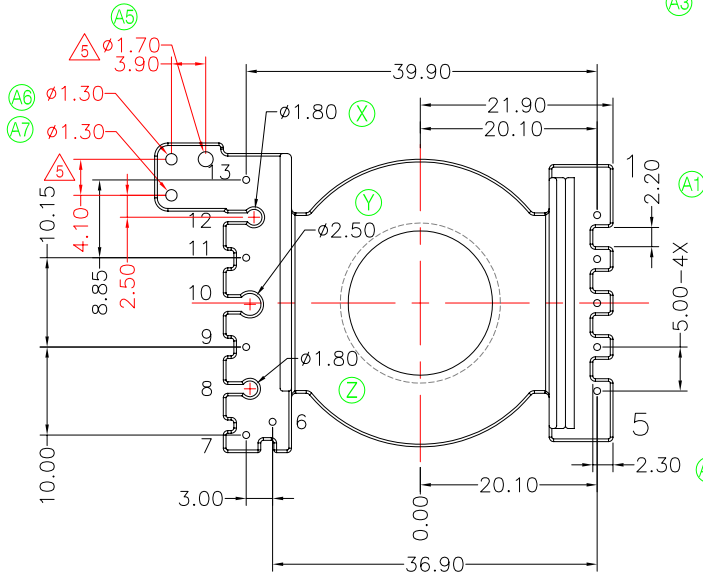
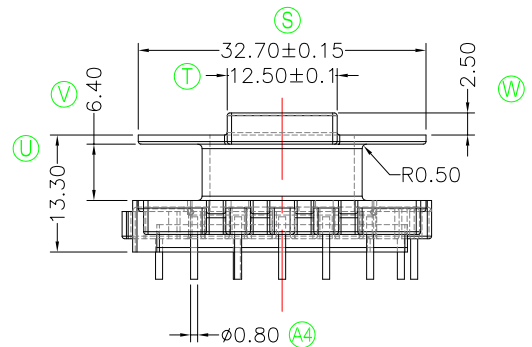
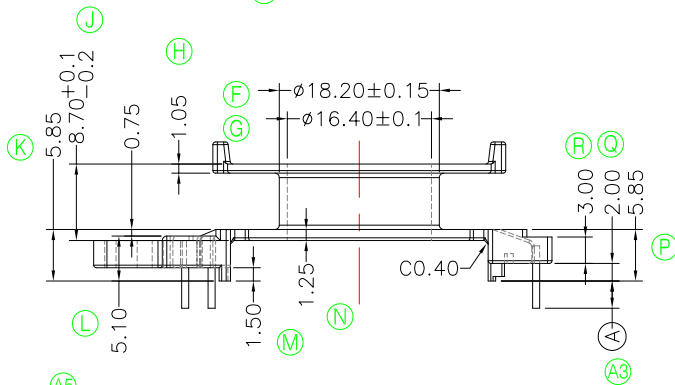
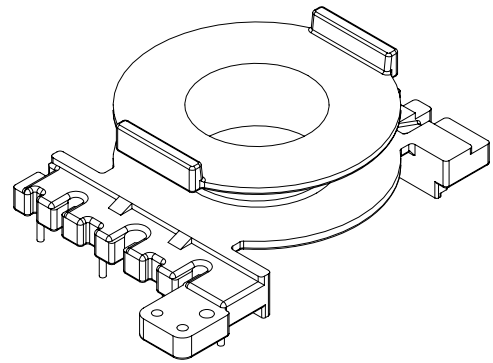
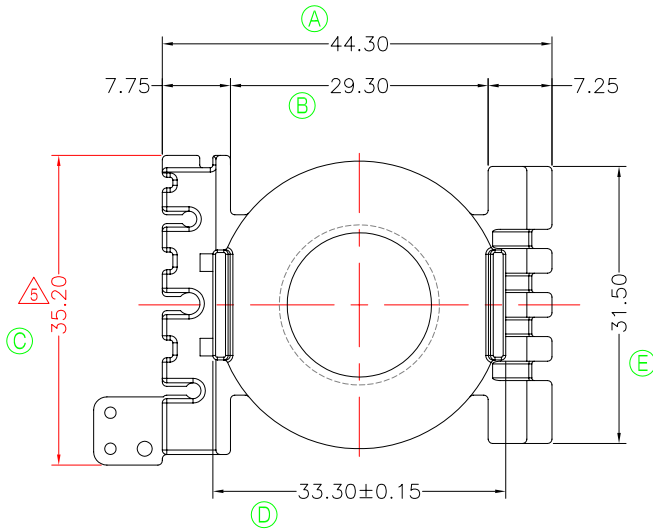


TRANSFORMER BOBBIN
INDUSTRIAL CO.,LTD.

Tel : 86-769-88789999 Fax : 86-769-88789989
http:// tbi-tw.com e-mail : tb6688@ms46.hinet.net

REVISIONS

REV	SYM	DRAFTER	CHECKER	DATE
3		G.F.YANG	W.H.HSU	09/28/09
4		YAN.TANG	G.F.YANG	12/15/09
5		G.F.YANG	W.H.HSU	07/28/10



焊錫前拉力:1.0KG MIN
焊錫後拉力:1.5KG MIN
任意一點強度須3.0kg MIN;
WINDING SPACE:7.25mm*6.4mm=46.4 mm²

DWG NO. CC40-16.5-13P-TH-F-12

PART NO. MATERIAL (BOBBIN) MATERIAL (TERMINAL) TERMINAL (PLATING) PIN ALLOCATION NOTE

TBI-239-01061.1206	PM-9820	CP WIRE	Sn	ALL PIN (A)=3.3±0.2 Δ_5	S
TBI-239-01061.1216	PM-9820	CP WIRE	Sn	CUT PIN #6,13 (A)=5.0±0.2	H
TBI-239-01061.1226	PM-9820	CP WIRE	Sn	CUT PIN #6,13 (A)=3.3±0.2 Δ_5	
TBI-239-01061.1236	PM-9820	CP WIRE	Sn	CUT PIN #6,13 (A)=4.0±0.2	

TOLERANCE: 0<L<=4:±0.1 4<L<=16:±0.2 16<L<=50:±0.3 PIN PITCH±0.2

UNIT : m / m

SCALE 1 : 1

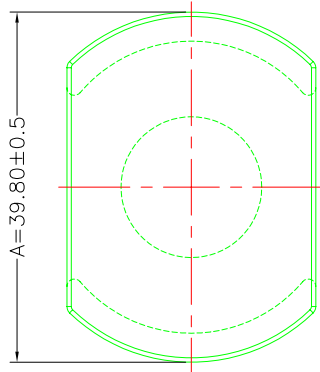
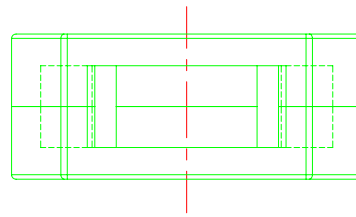
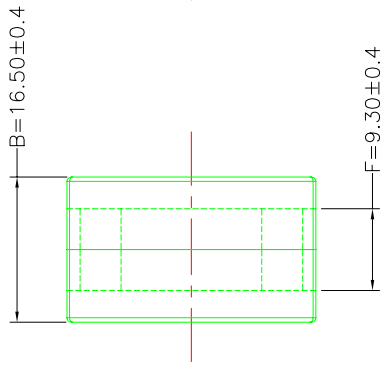
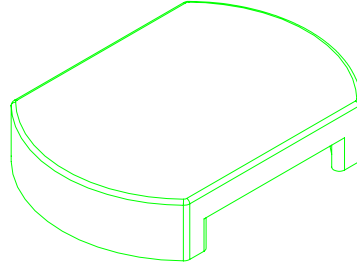
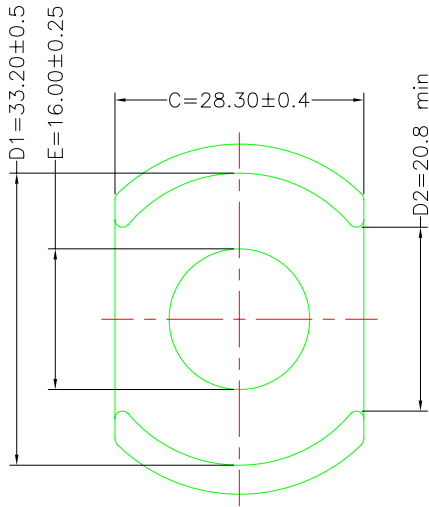
Finish: 1. PB wire Immersion Sn on terminal : Thickness:Sn plating,100,5 μ m (200 μ inches) min,Base nickel 0.625 μ m (25 μ inches) min.
2. CP wire Immersion Sn on terminal : Thickness:Sn plating,100,5 μ m (200 μ inches) min.
3. Coplanarity deviation: 0.10 mm (0.004 inches) max.

REV 5

A-CORE
ELECTRICAL CO.

A-CORE JIANGMEN ELECTRONICS CO.,LTD
江門安磁電子有限公司
Tel : 86-750-3867791 Fax : 86-750-3867787

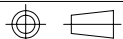
REVISIONS				
REV	SYM	DRAFTER	CHECKER	DATE
①		YAN.TANG	G.F.YANG	01/16/10
②				
③				



Cross section area

- A1 (Limbs) = 214.4 mm^2
- A2 (Back wall) = 203.8 mm^2
- A3 (Center post) = 201.1 mm^2
- Ae = 206 mm^2
- Le = 48.05 mm
- C1 = 0.234 mm^{-1}

DWG NO.	CC40/16.5 CORE				
PART NO.	MATERIAL (BOBBIN)	MATERIAL (TERMINAL)	TERMINAL (PLATING)	PIN ALLOCATION	NOTE
CC40/16.5	JPP-44A				
CC40/16.5	JPP-95				



TOLERANCE: .XX±0.1 .XXX±0.05

UNIT : m / m

SCALE 1 : 1

REV 1

A-CORE

A-CORE JIANGMEN ELECTRONICS CO.,LTD
江門安磁電子有限公司

TBI

TRANSFORMER BOBBIN
INDUSTRIAL CO.,LTD.

ELECTRICAL CO. Tel : 86-750-3867791 Fax : 86-750-3867787

Tel : 86-769-88789999 Fax : 86-769-88789989

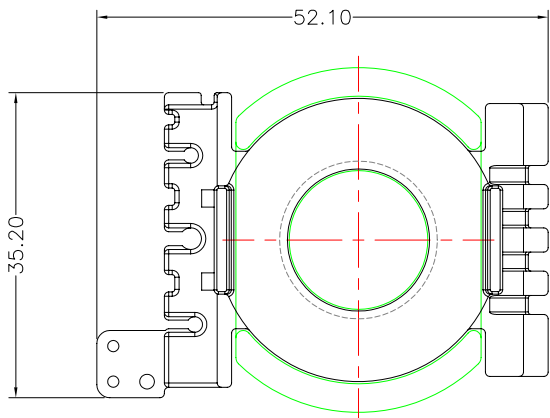
e-mail : sales@acore-ferrite.com

http:// tbi-tw.com e-mail : tb6688@ms46.hinet.net

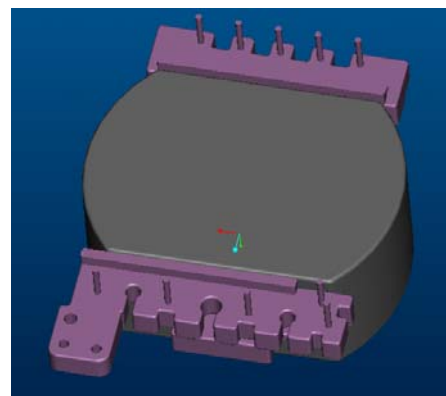
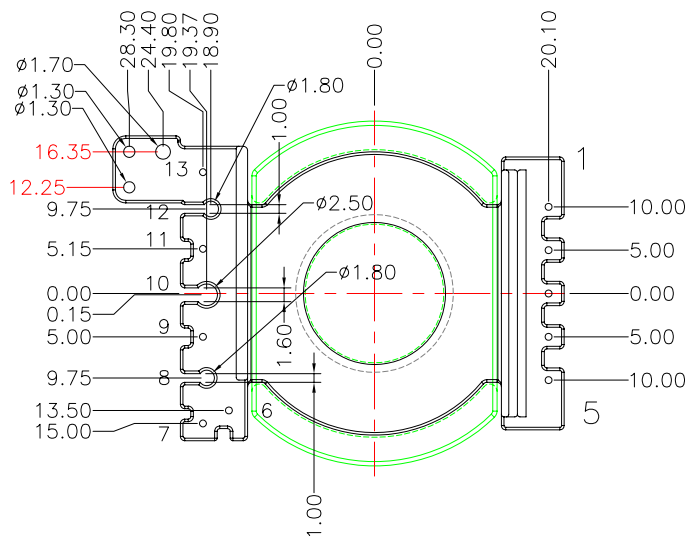
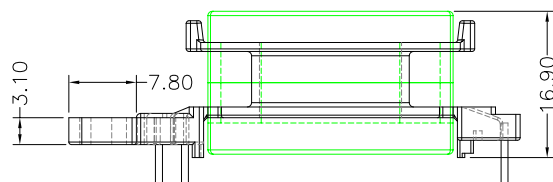
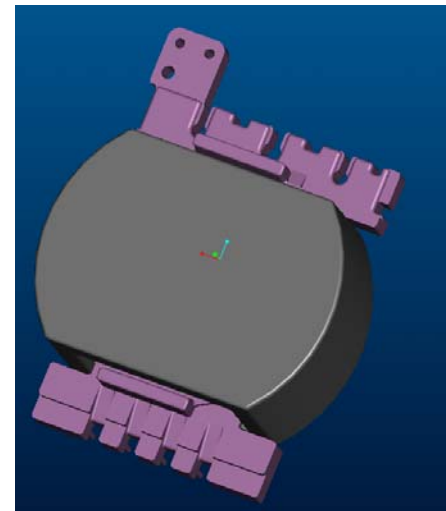
REVISIONS

REV	SYM	DRAFTER	CHECKER	DATE
△		G.F.YANG	W.H.HSU	09/28/09
△		YAN.TANG	G.F.YANG	12/15/09
△		G.F.YANG	W.H.HSU	07/28/10

TOP

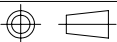


TOP



BOTTOM

BOTTOM

ITEM	PART NO.	MATERIAL	DWG NO.	Core Set Parameters	
CORE	CC40/16.5	JPP-44A		Ae	=206mm ²
CORE	CC40/16.5	JPP-95		Le	=48.05mm
BOBBIN	TBI-239-01061.12XX		CC40-16.5-13P-TH-F-12	C1	=0.234mm ⁻¹
				Ve	=9898.3mm ³
				UNIT : m/m	
				SCALE 1 : 1	
				REV	5