

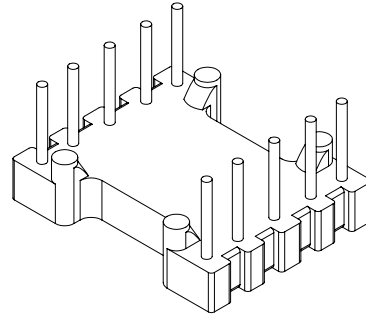
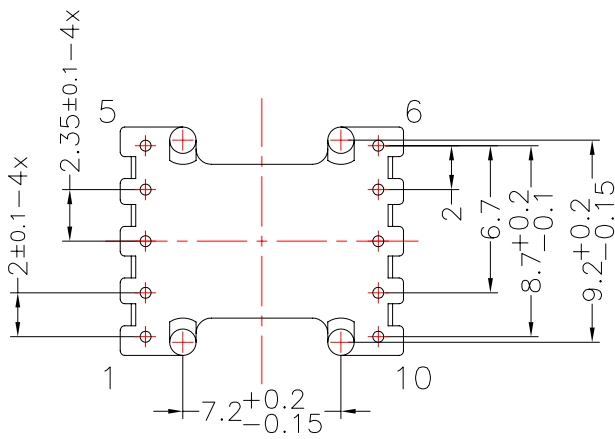
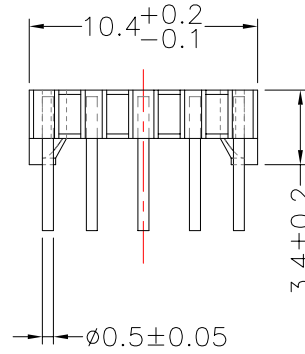
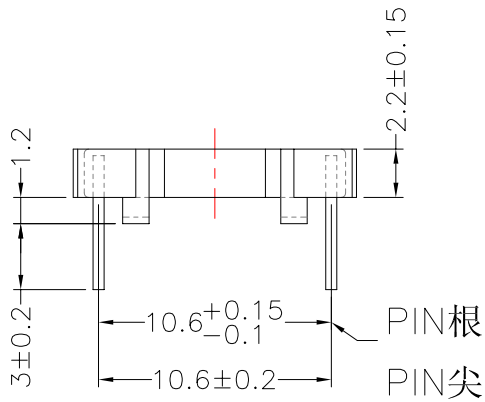
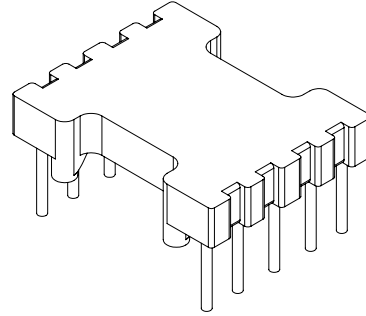
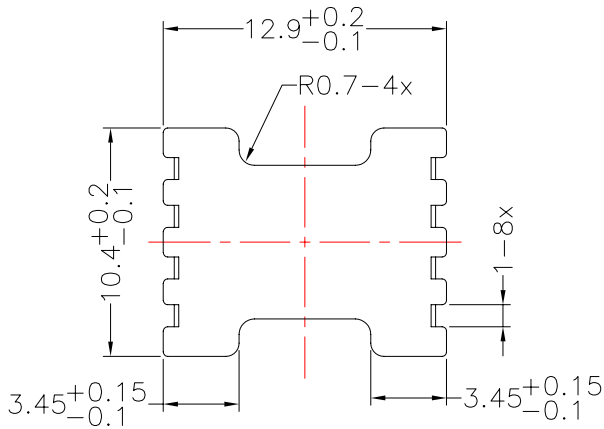


**TRANSFORMER BOBBIN
INDUSTRIAL CO.,LTD.**

Tel : 86-769-88789999 Fax : 86-769-88789989
http:// tbi-tw.com e-mail : tb6688@ms46.hinet.net

REVISIONS

| REV | SYM | DRAFTER | CHECKER | DATE |
|-----|-----|----------|----------|----------|
| ① | | X.X.YUAN | G.F.YANG | 04/02/15 |
| ② | | | | |
| ③ | | | | |



DWG NO. B13X11-10P-TH-2.0-C-11

| PART NO. | MATERIAL (BOBBIN) | MATERIAL (TERMINAL) | TERMINAL (PLATING) | PIN ALLOCATION | NOTE |
|--------------------|-------------------|---------------------|--------------------|-----------------------|----------------|
| TBI-220-11031.1106 | PM-9630 | CP WIRE | Sn | ALL PIN | S |
| TBI-220-11031.1116 | PM-9630 | CP WIRE | Sn | CUT PIN #2,3,4,8 | 53GB13X11101 H |
| TBI-220-11031.1126 | PM-9630 | CP WIRE | Sn | CUT PN #3,8 | 53GB13X11102 |
| TBI-220-11031.1136 | PM-9630 | CP WIRE | Sn | CUT PIN #2,4,8 | 53GB13X11103 |
| TBI-220-11031.1146 | PM-9630 | CP WIRE | Sn | CUT PIN #2,3,4,7,8,9 | 53GB13X11104 |
| TBI-220-11031.1156 | PM-9630 | CP WIRE | Sn | CUT PIN #7,9 | 53GB13X11105 |
| TBI-220-11031.1166 | PM-9630 | CP WIRE | Sn | CUT PIN #4,6,8,10 | 53GB13X11106 |
| TBI-220-11031.1176 | PM-9630 | CP WIRE | Sn | CUT PIN #1,3,5,6,8,10 | 53GB13X11107 |

TOLERANCE: .X±0.15 .XX±0.10 .XXX±0.05 UNIT : m / m SCALE 3 : 1

Finish: 1. PB wire Immersion Sn on terminal : Thickness:Sn plating,100%,5 μm (200 μ inches) min,Base nickel 0.625 μm (25 μ inches) min.
2. CP wire Immersion Sn on terminal : Thickness:Sn plating,100%,5 μm (200 μ inches) min.
3. Coplanarity deviation: 0.10 mm (0.004 inches)max.

REV 1