

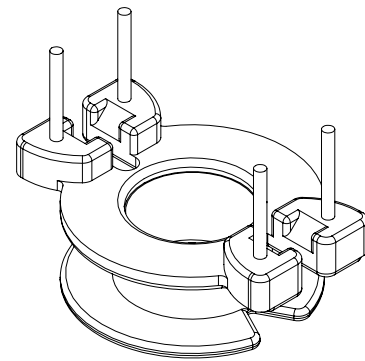
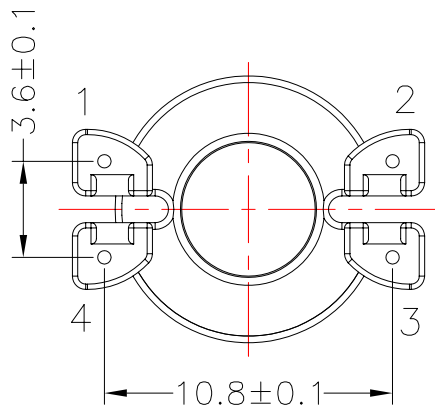
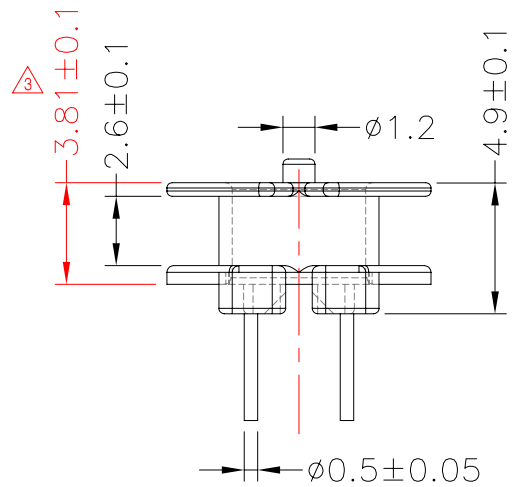
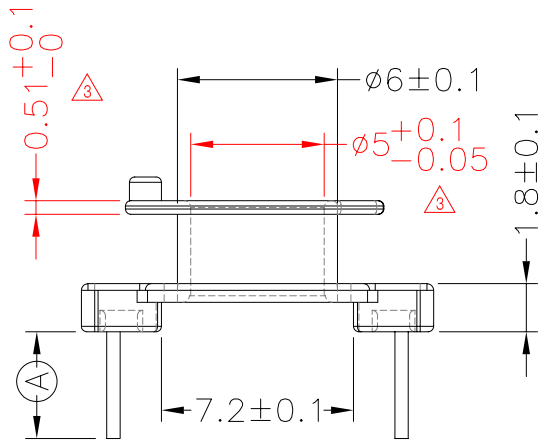
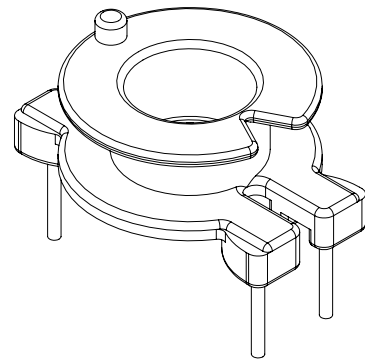
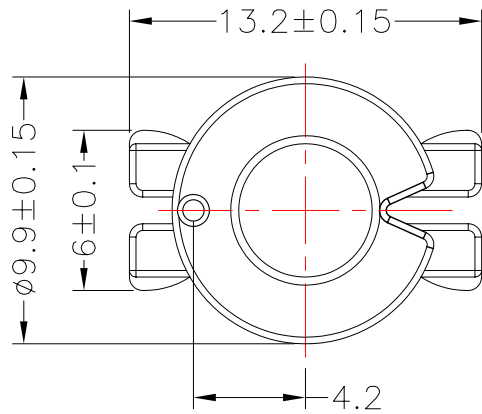


TRANSFORMER BOBBIN  
INDUSTRIAL CO.,LTD.

Tel : 86-769-88789999 Fax : 86-769-88789989  
http:// tbi-tw.com e-mail : tb6688@ms46.hinet.net

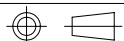
REVISIONS

REV	SYM	DRAFTER	CHECKER	DATE
△1		YAN.TANG	G.F.YANG	01/23/10
△2		G.F.YANG	W.H.HSU	04/06/10
△3		YAN.TANG	G.F.YANG	11/19/10



DWG NO. RM5-4P-TH-D-11

PART NO.	MATERIAL (BOBBIN)	MATERIAL (TERMINAL)	TERMINAL (PLATING)	PIN ALLOCATION	NOTE
TBI-208-03041.1106	PM-9630	CP WIRE	Sn	ALL PIN (A)=4.0±0.2	S
TBI-208-03041.1116	PM-9630	CP WIRE	Sn	CUT PIN #3 (A)=5.0±0.2	H
TBI-208-03041.1126	PM-9630	CP WIRE	Sn	CUT PIN #4 (A)=5.0±0.2	



TOLERANCE: .X±0.15 .XX±0.10 .XXX±0.05

UNIT : m / m

SCALE 1 : 1

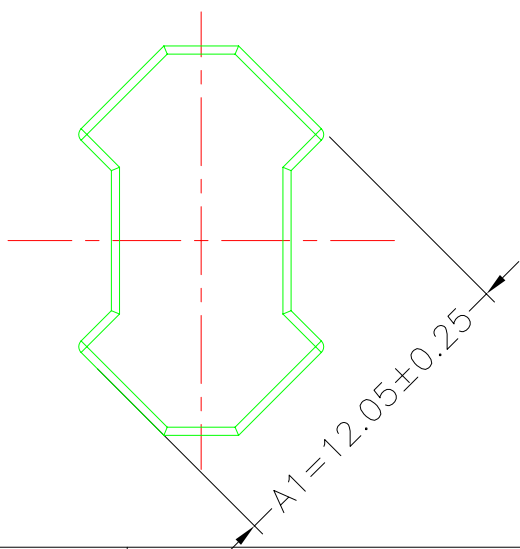
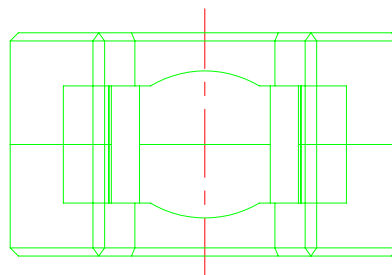
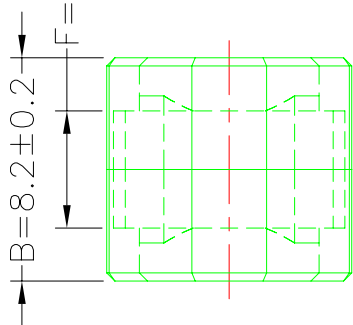
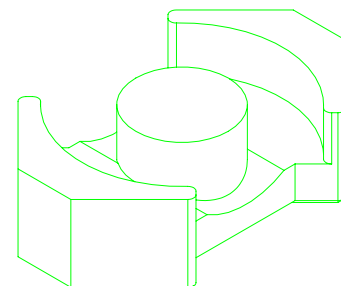
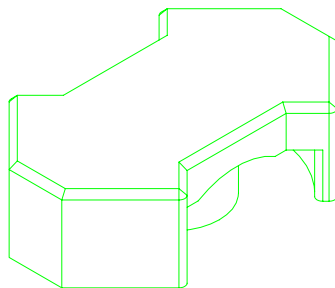
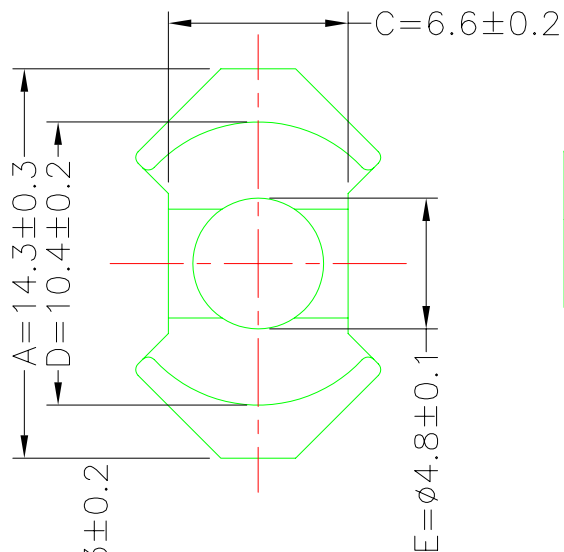
Finish: 1. PB wire Immersion Sn on terminal : Thickness:Sn plating,100,5 μm (200 μ inches) min,Base nickel 0.625 μm (25 μ inches) min.  
2. CP wire Immersion Sn on terminal : Thickness:Sn plating,100,5 μm (200 μ inches) min.  
3. Coplanarity deviation: 0.10 mm (0.004 inches) max.

REV 3

**A-CORE**  
ELECTRICAL CO.

A-CORE JIANGMEN ELECTRONICS CO.,LTD  
江門安磁電子有限公司  
Fax : 86-750-3867787

REVISIONS				
REV	SYM	DRAFTER	CHECKER	DATE
①		G.F.YANG	W.H.HSU	02/27/10
②				
③				

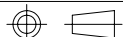


Cross section area

A1 (Limbs)	=29.903mm <sup>2</sup>
A2(Back wall)	=31.57mm <sup>2</sup>
A3(Center post)	=18.096mm <sup>2</sup>
Ae	=24.4mm <sup>2</sup>
Le	=19.5mm
C1	=0.8mm <sup>-1</sup>
Ve	=475.8mm <sup>3</sup>

DWG NO. RM5/8.2CORE

PART NO.	MATERIAL (BOBBIN)	MATERIAL (TERMINAL)	TERMINAL (PLATING)	PIN ALLOCATION	NOTE
RM5/8.2	JPP-44A				
RM5/8.2	JPP-95				



Finish:

UNIT : m/m

SCALE 1 : 1

REV 1

**A-CORE**

A-CORE JIANGMEN ELECTRONICS CO.,LTD  
 江門安磁電子有限公司

**TBI**

TRANSFORMER BOBBIN  
 INDUSTRIAL CO.,LTD.

ELECTRICAL CO. Tel : 86-750-3867791 Fax : 86-750-3867787

Tel : 86-769-88789999 Fax : 86-769-88789989

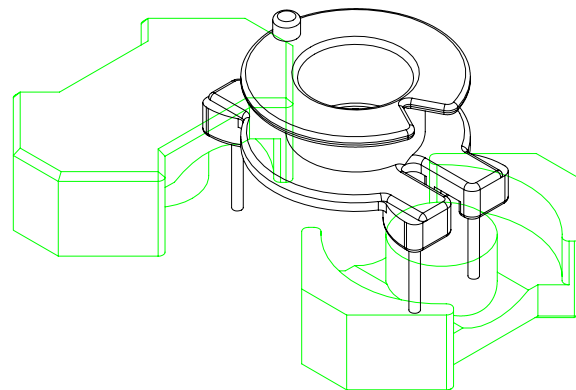
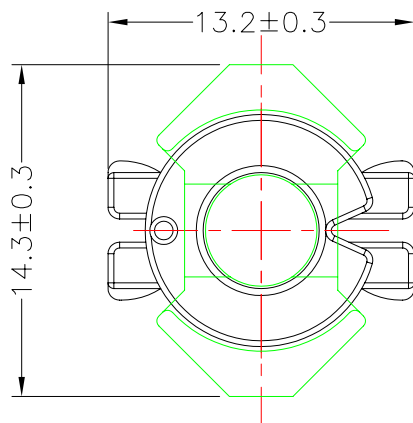
e-mail : sales@acore-ferrite.com

http:// tbi-tw.com e-mail : tb6688@ms46.hinet.net

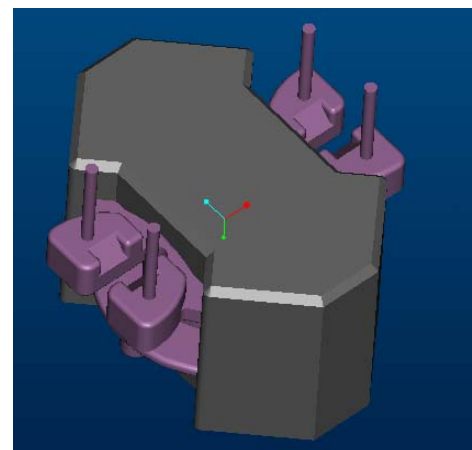
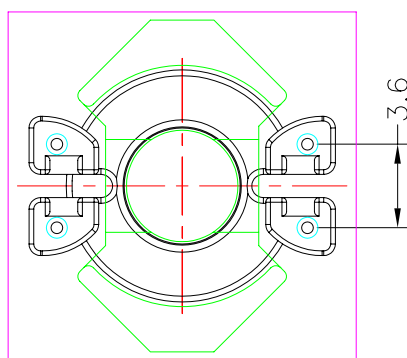
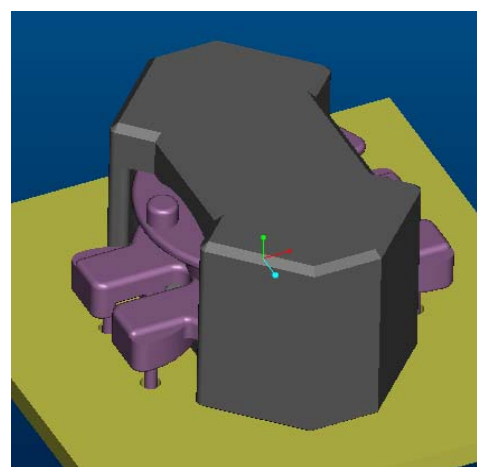
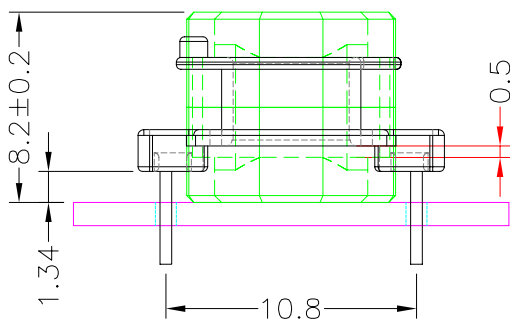
REVISIONS

REV	SYM	DRAFTER	CHECKER	DATE
△1		G.F.YANG	W.H.HSU	02/27/10
△2		G.F.YANG	W.H.HSU	04/06/10
△3		YAN.TANG	G.F.YANG	11/19/10

TOP

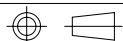


TOP



BOTTOM

ITEM	PART NO.	MATERIAL	DWG NO.	Core Set Parameters
CORE	RM5/8.2	JPP-44A		Ae=24.4mm <sup>2</sup> Le=19.5mm C1=0.8mm <sup>-1</sup> Ve=475.8mm <sup>3</sup>
CORE	RM5/8.2	JPP-95		
BOBBIN	TBI-208-03041.11XX		RM5-4P-TH-D-11	



UNIT : m / m

SCALE 1 : 1

REV 3