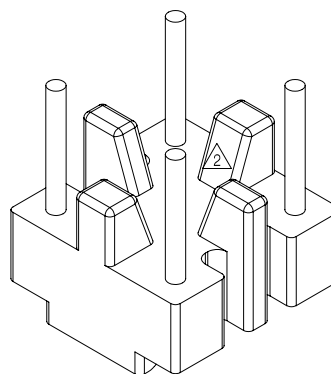
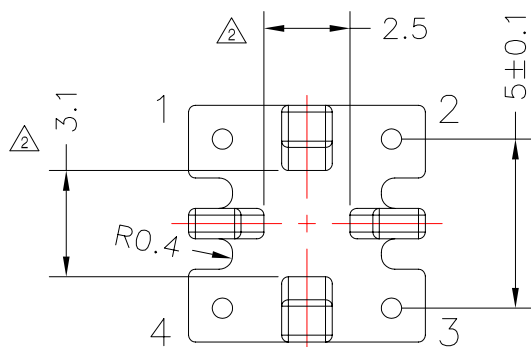
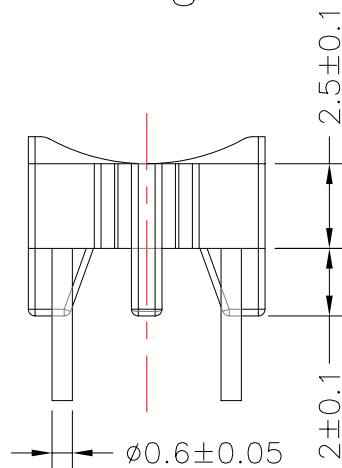
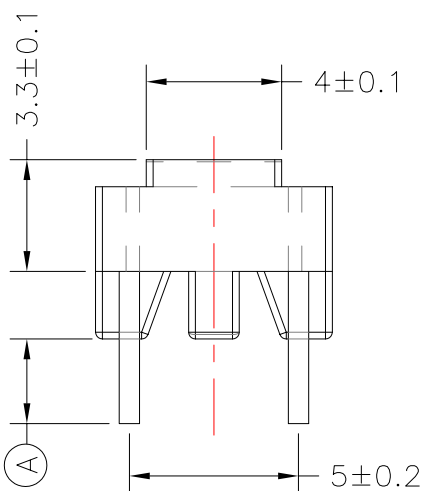
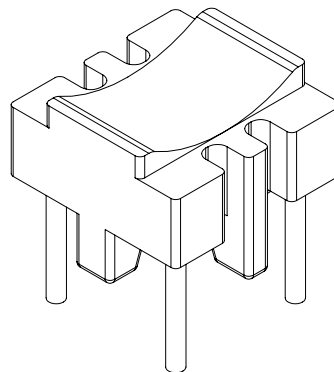
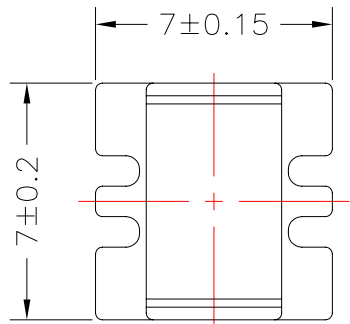




**TRANSFORMER BOBBIN INDUSTRIAL CO.,LTD.**

Tel : 86-769-88789999 Fax : 86-769-88789989  
 http:// tbi-tw.com e-mail : tb6688@ms46.hinet.net

REVISIONS				
REV	SYM	DRAFTER	CHECKER	DATE
△2		X.H.GU	G.F.YANG	10/06/09
△3		YAN.TANG	G.F.YANG	11/11/09
△4		YAN.TANG	G.F.YANG	11/20/09



DWG NO.	B7X7-4P-TH-5.0-B-12				
PART NO.	MATERIAL (BOBBIN)	MATERIAL (TERMINAL)	TERMINAL (PLATING)	PIN ALLOCATION	NOTE
TBI-220-16021.1206	PM-9820	CP WIRE	Sn	ALL PIN (A)=2.5±0.3	H
TBI-220-16021.1216	PM-9820	CP WIRE	Sn	ALL PIN (A)=3.5±0.2 △4	
△2 TBI-220-16021.1226	PM-9820	CP WIRE	Sn	ALL PIN (A)=5.0±0.5	
△4 TBI-220-16021.1236	PM-9820	CP WIRE	Sn	ALL PIN (A)=2.7±0.2	
TBI-220-16021.1246	PM-9820	CP WIRE	Sn	ALL PIN (A)=3.4±0.2	
	TOLERANCE: .X±0.15 .XX±0.10 .XXX±0.05			UNIT : m / m	SCALE 1 : 1
Finish:	1. PB wire Immersion Sn on terminal : Thickness:Sn plating,100,5 μm (200 μ inches) min,Base nickel 0.625 μm (25 μ inches) min. 2. CP wire Immersion Sn on terminal : Thickness:Sn plating,100,5 μm (200 μ inches) min. 3. Coplanarity deviation: 0.10 mm (0.004 inches )max.				REV 4