

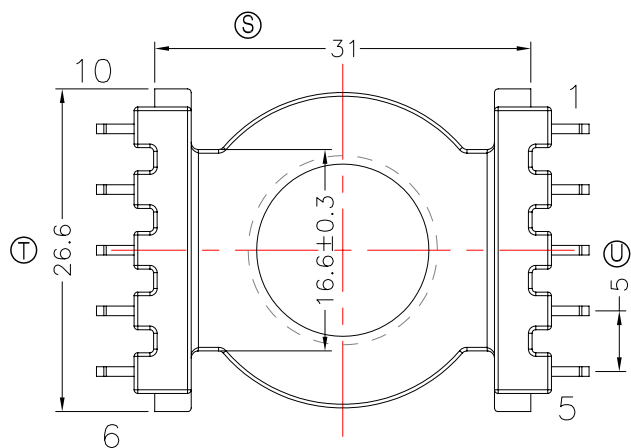
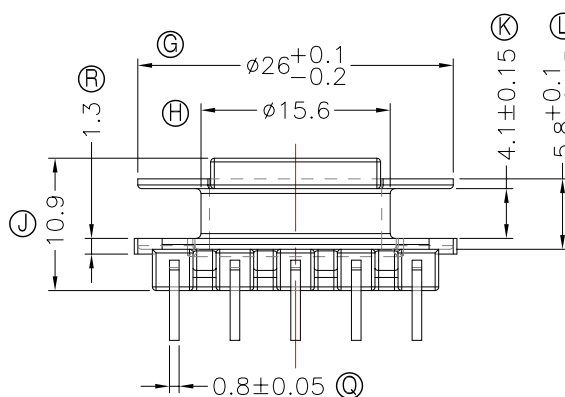
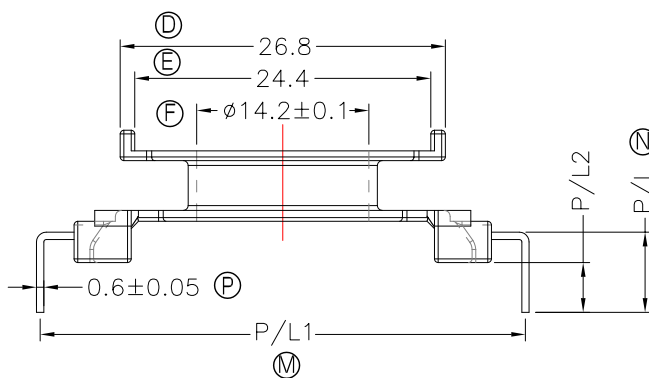
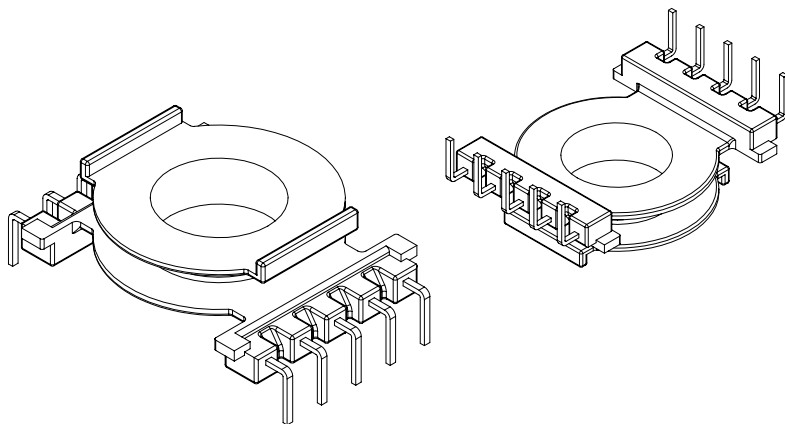
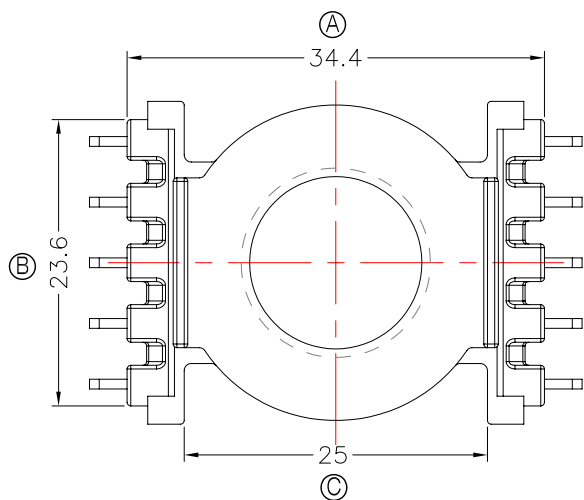


TRANSFORMER BOBBIN  
INDUSTRIAL CO.,LTD.

Tel : 86-769-88789999 Fax : 86-769-88789989  
http:// tbi-tw.com e-mail : tb6688@ms46.hinet.net

REVISIONS

REV	SYM	DRAFTER	CHECKER	DATE
1		X.H.GU	G.F.YANG	08/26/16
2				
3				

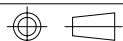


NOTE:

- 1.任意一點強度須1.5kg MIN;
- 2.耐壓4.0Kv /1.5mA 60S;
- 3.焊錫溫度:450°±10° 3SEC;
- 4.焊錫前拉力:1.0KG MIN,焊錫後拉力:1.5KG MIN;

DWG NO. CC33-12.2-10P-THT-5.0-0H-17

PART NO.	MATERIAL (BOBBIN)	MATERIAL (TERMINAL)	TERMINAL (PLATING)	PIN ALLOCATION
TBI-239-04081.1706	PM-9823	CP WIRE	Sn	ALL PIN P/L=6.6±0.2 P/L1= 40±0.3 P/L2= 4.1±0.2
TBI-239-04081.1716	PM-9823	CP WIRE	Sn	CUT PIN#1,6,7,8,9,10, P/L=6.6±0.2 P/L1=40±0.3 P/L2= 4.1±0.2
TBI-239-04081.1726	PM-9823	CP WIRE	Sn	CUT PIN#1,6,7,8,9,10, P/L=6.0±0.2 P/L1=40±0.3 P/L2= 3.5±0.2
TBI-239-04081.1736	PM-9823	CP WIRE	Sn	ALL PIN P/L=6.6±0.2 P/L1= 38.5±0.3 P/L2= 4.1±0.2
TBI-239-04081.1746	PM-9823	CP WIRE	Sn	CUT PIN #3,6,7,10 P/L=6.6±0.2 P/L1= 38.5±0.3 P/L2= 4.1±0.2
TBI-239-04081.1756	PM-9823	CP WIRE	Sn	CUT PIN #3,6,7,10 P/L=6.3±0.2 P/L1= 38.5±0.3 P/L2=3.8±0.2
TBI-239-04081.1766	PM-9823	CP WIRE	Sn	CUT PIN #8 P/L=6.3±0.2 P/L1= 38.5±0.3 P/L2=3.8±0.2



TOLERANCE: 0<L<=4: ±0.1 4<L<=16: ±0.2 16<L<=63: ±0.3

UNIT : m / m

SCALE 1 : 1

Finish: 1. PB wire Immersion Sn on terminal : Thickness:Sn plating,100%,5 μm (200 μ inches) min,Base nickel 0.625 μm (25 μ inches) min.  
2. CP wire Immersion Sn on terminal : Thickness:Sn plating,100%,5 μm (200 μ inches) min.  
3. Coplanarity deviation: 0.10 mm (0.004 inches) max.

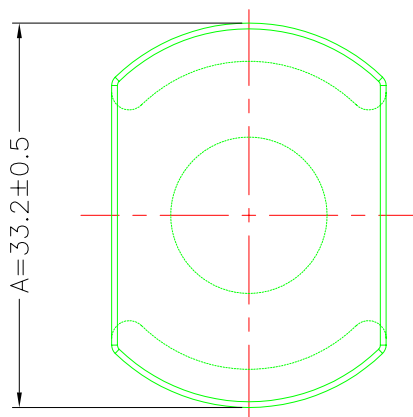
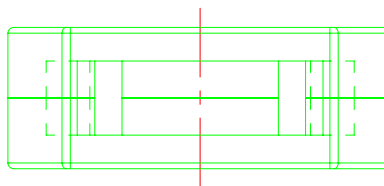
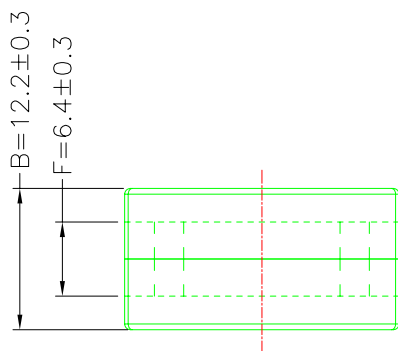
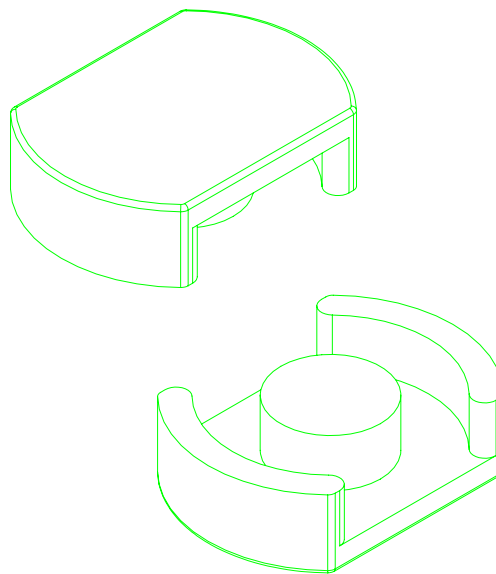
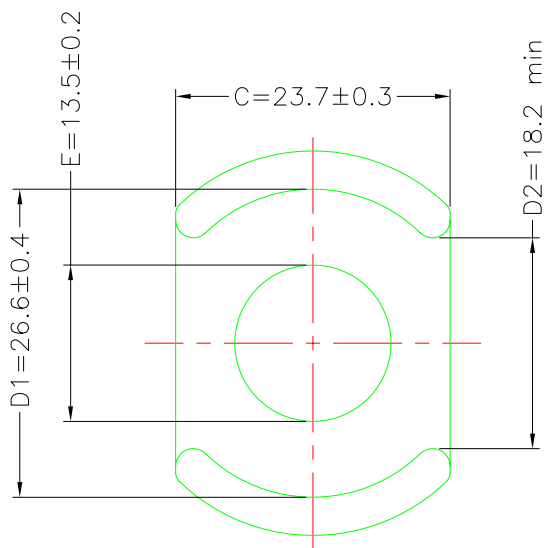
REV 1

**A-CORE**  
ELECTRICAL CO.

A-CORE JIANGMEN ELECTRONICS CO.,LTD  
 江门安磁电子有限公司  
 Tel: 86-750-3867791 Fax : 86-750-3867787

REVISIONS

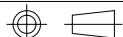
REV	SYM	DRAFTER	CHECKER	DATE
①		X.H.GU	G.F.YANG	11/24/09
②				
③				



Core Set Parameters

$A_e = 145.2 \text{ mm}^2$   
 $L_e = 36.26 \text{ mm}$   
 $C_1 = 0.25 \text{ mm}^{-1}$   
 $V_e = 5264.952 \text{ mm}^3$

DWG NO.	CC33/12.2- CORE				
PART NO.	MATERIAL (BOBBIN)	MATERIAL (TERMINAL)	TERMINAL (PLATING)	PIN ALLOCATION	NOTE
CC33/12.2	JPP-44A				
CC33/12.2	JPP-95				



TOLERANCE:  $0 < L \leq 4: \pm 0.1$   $4 < L \leq 16: \pm 0.2$   $16 < L \leq 63: \pm 0.3$

UNIT : m / m

SCALE 1 : 1

Finish:

REV 1

**A-CORE**

A-CORE JIANGMEN ELECTRONICS CO.,LTD  
 江門安磁電子有限公司

**TBI**

TRANSFORMER BOBBIN  
 INDUSTRIAL CO.,LTD.

ELECTRICAL CO. Tel : 86-750-3867791 Fax : 86-750-3867787

Tel : 86-769-88789999 Fax : 86-769-88789989

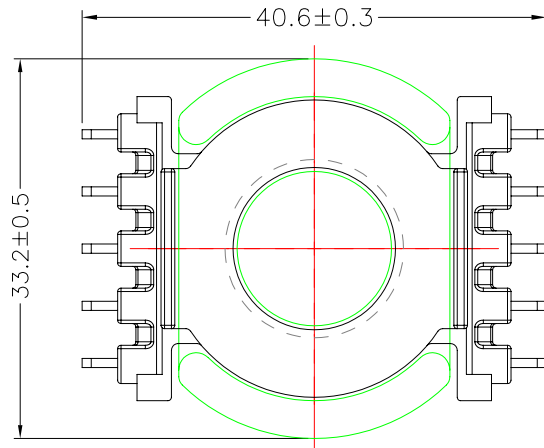
e-mail : sales@acore-ferrite.com

http:// tbi-tw.com e-mail : tb6688@ms46.hinet.net

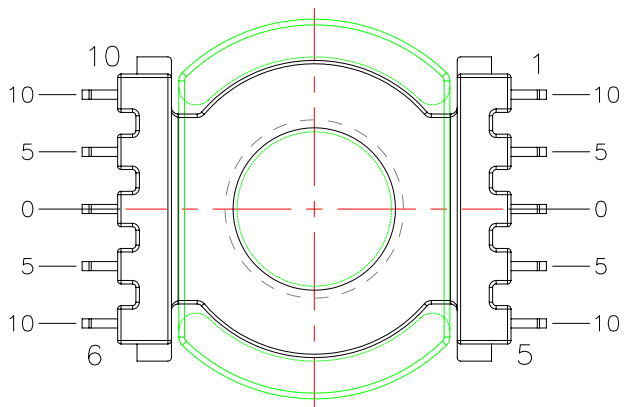
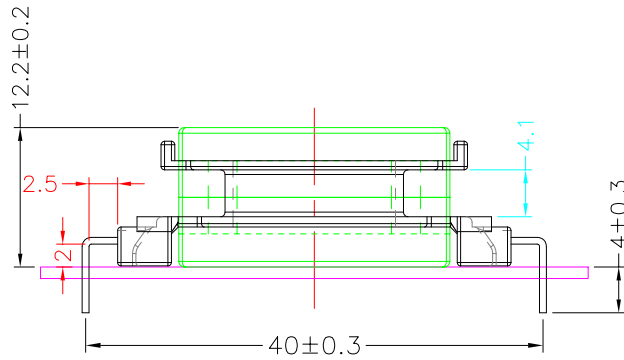
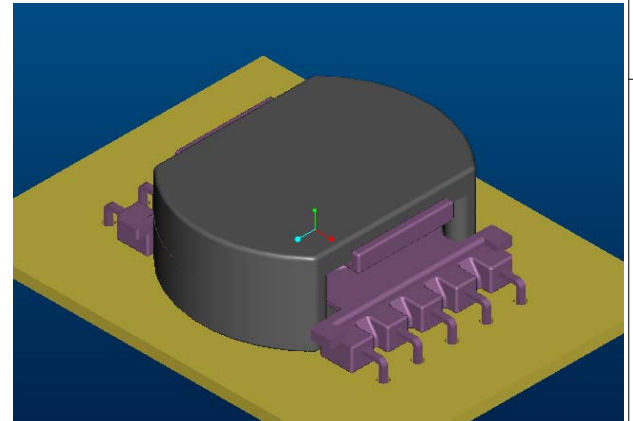
REVISIONS

REV	SYM	DRAFTER	CHECKER	DATE
△1		X.H.GU	G.F.YANG	08/26/16
△2				
△3				

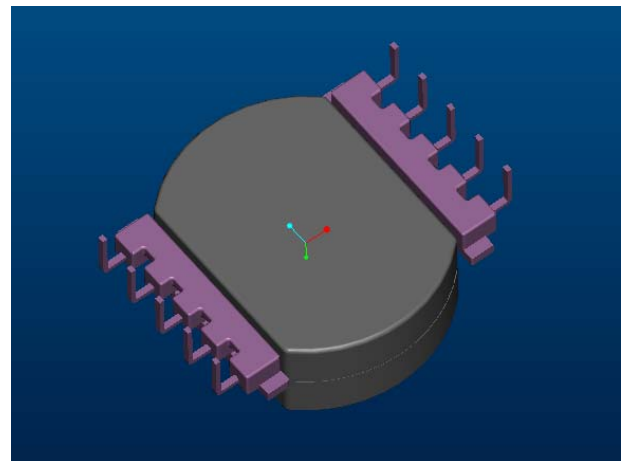
TOP



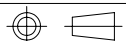
TOP



BOTTOM



ITEM	PART NO.	MATERIAL	DWG NO.	Core Set Parameters
CORE	CC33/12.2	JPP-44A		C1=0.25mm <sup>-1</sup> Le=36.26mm Ae=145.2mm <sup>2</sup> Ve=5264.952mm <sup>3</sup>
CORE	CC33/12.2	JPP-95		
BOBBIN	TBI-239-04081.17XX		CC33-12.2-10P-THT-5.0-0H-17	
			UNIT : m/m	SCALE 1 : 1



REV 1