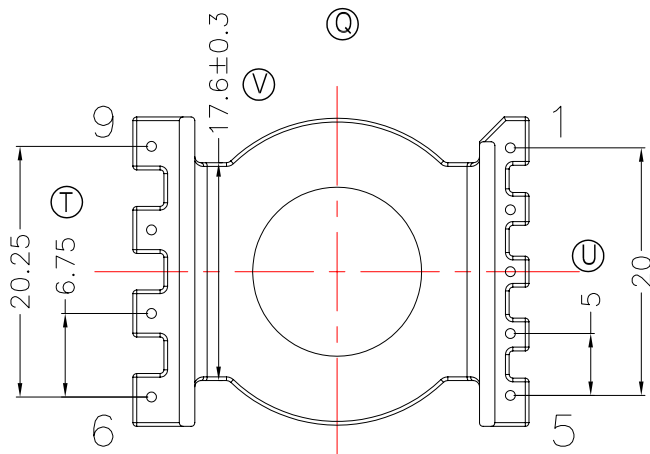
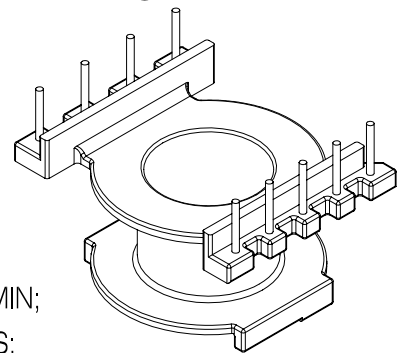
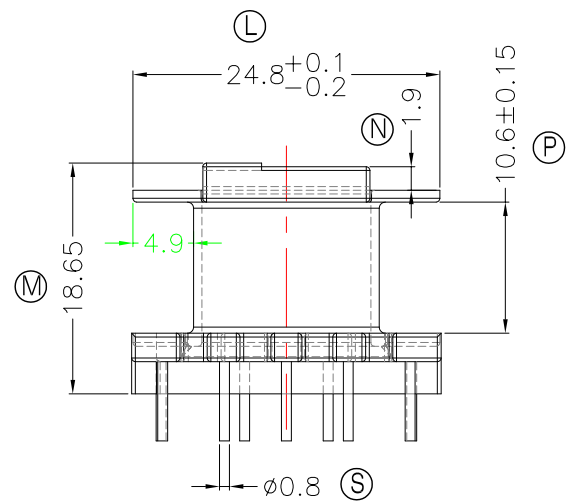
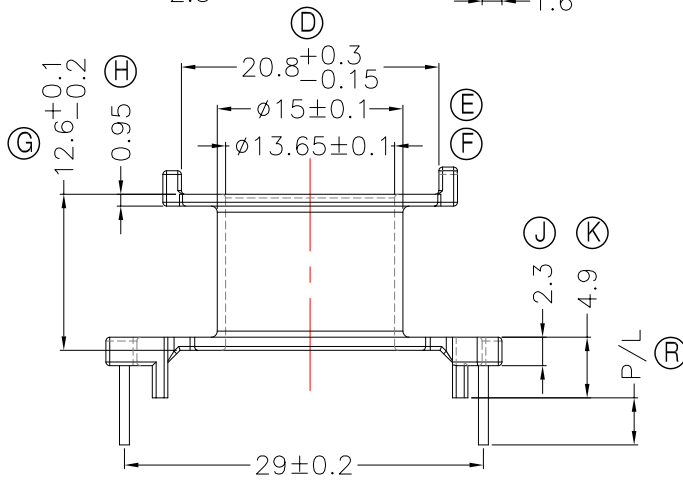
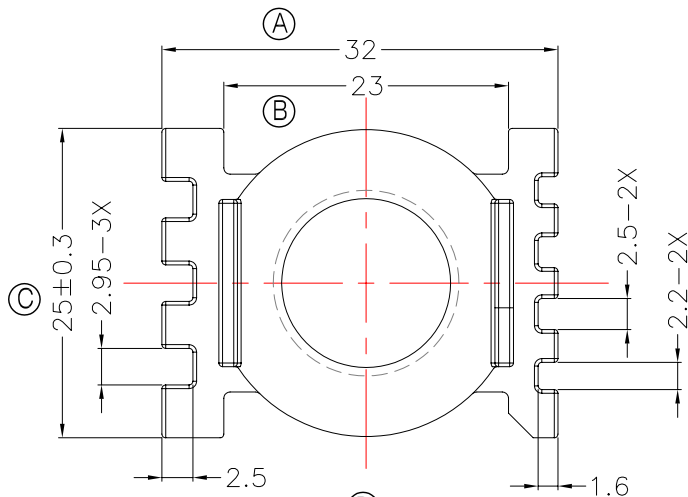




**TRANSFORMER BOBBIN
INDUSTRIAL CO.,LTD.**

Tel : 86-769-88789999 Fax : 86-769-88789989
http:// tbi-tw.com e-mail : tb6688@ms46.hinet.net

REVISIONS				
REV	SYM	DRAFTER	CHECKER	DATE
1		F.LU	G.F.YANG	05/15/17
2				
3				



NOTE:

- 任意一點強度須1.8kg MIN;
 - 耐壓4.0Kv /1.5mA 60S;
 - 焊錫溫度:450°±10° 3SEC;
 - 焊錫前拉力:1.0KG MIN,焊錫後拉力:1.5KG MIN;
- 與TBI-239-02021.91C(CC30-16.6-9P-CASE-B-91)配套使用;

DWG NO. CC30-19-9P-TH-A4-17

PART NO.	MATERIAL (BOBBIN)	MATERIAL (TERMINAL)	TERMINAL (PLATING)	PIN ALLOCATION	NOTE
TBI-239-02141.1706	PM-9823	CP WIRE	Sn	ALL PIN P/L=3.5±0.2	S
TBI-239-02141.1716	PM-9823	CP WIRE	Sn	NO PIN #2,4,7,9 P/L=3.5±0.2	H
TBI-239-02141.1726	PM-9823	CP WIRE	Sn	NO PIN #2,3,7 P/L=3.5±0.2	

TOLERANCE:0<L<=4:±0.1 4<L<=16:±0.2 16<L<=63:±0.3

UNIT : m / m

SCALE 1 : 1

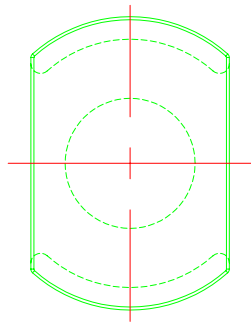
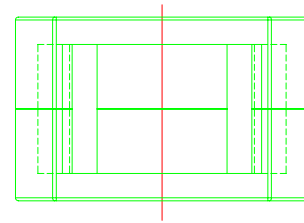
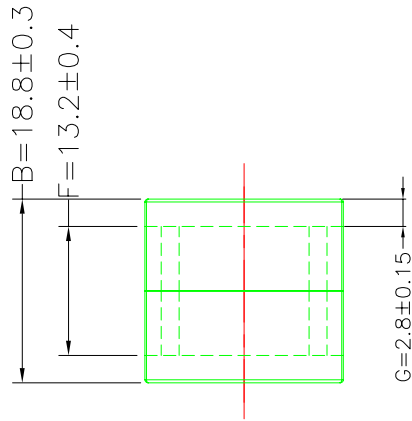
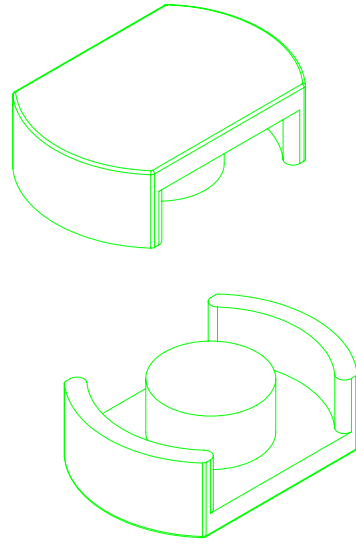
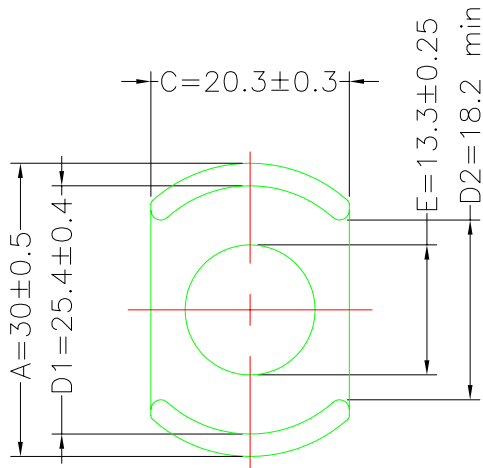
Finish: 1. PB wire Immersion Sn on terminal : Thickness:Sn plating,100%,5 μm (200 μ inches) min,Base nickel 0.625 μm (25 μ inches) min.
2. CP wire Immersion Sn on terminal : Thickness:Sn plating,100%,5 μm (200 μ inches) min.
3. Coplanarity deviation: 0.10 mm (0.004 inches) max.

REV 1

A-CORE
ELECTRICAL CO.

A-CORE JIANGMEN ELECTRONICS CO.,LTD
江門安磁電子有限公司
Tel : 86-750-3867791 Fax : 86-750-3867787

REVISIONS				
REV	SYM	DRAFTER	CHECKER	DATE
①		X.H.GU	G.F.YANG	04/01/10
②				
③				



Cross section area

- A1 (Limbs) = 100mm²
- A2(Back wall) = 113.7mm²
- A3(Center post) = 138.9mm²
- Ae = 117mm²
- Le = 46.2mm
- C1 = 0.39mm⁻¹
- Ve = 5405.4mm³

DWG NO.	CC30/19- CORE				
PART NO.	MATERIAL (BOBBIN)	MATERIAL (TERMINAL)	TERMINAL (PLATING)	PIN ALLOCATION	NOTE
CC30/19	JPP-44A				
CC30/19	JPP-95				

Finish:	TOLERANCE: 0<L<=4:±0.1 4<L<=16:±0.2 16<L<=63:±0.3	UNIT : m / m	SCALE 1 : 1	
			REV	1

A-CORE

A-CORE JIANGMEN ELECTRONICS CO.,LTD
 江門安磁電子有限公司

TBI

TRANSFORMER BOBBIN
 INDUSTRIAL CO.,LTD.

ELECTRICAL CO. Tel : 86-750-3867791 Fax : 86-750-3867787

Tel : 86-769-88789999 Fax : 86-769-88789989

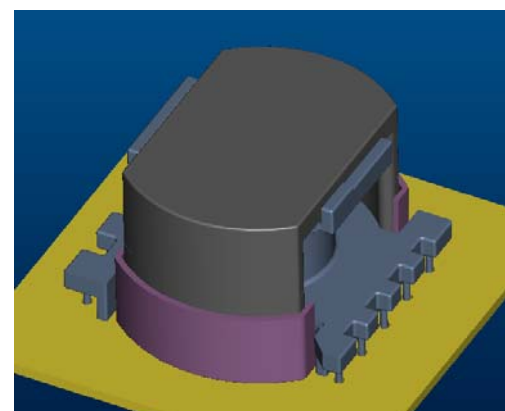
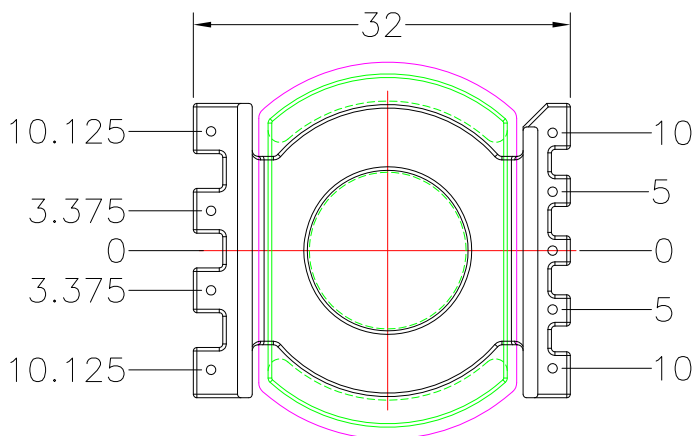
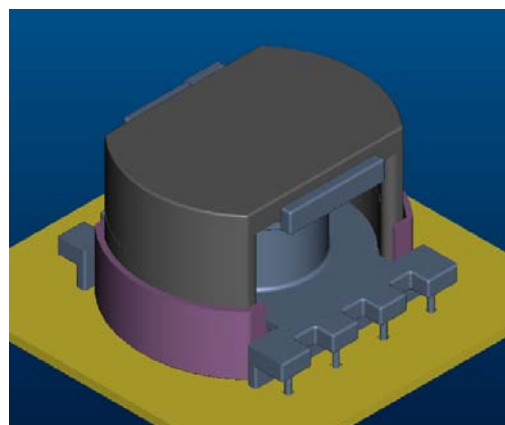
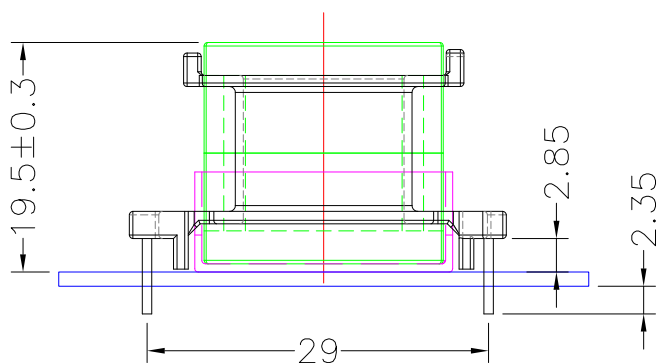
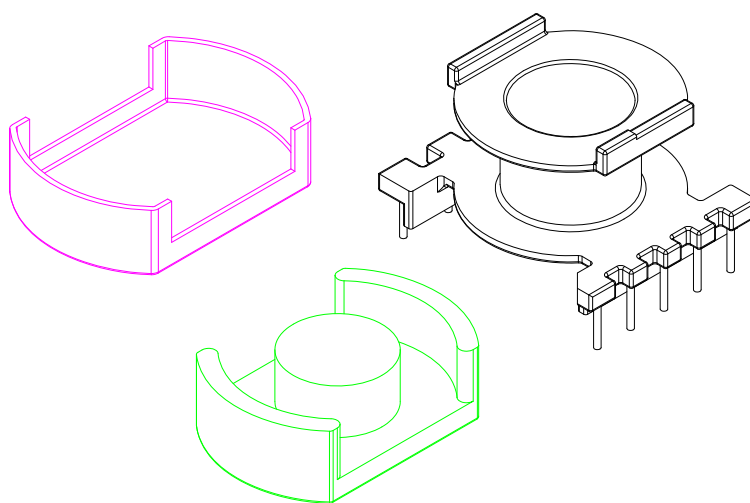
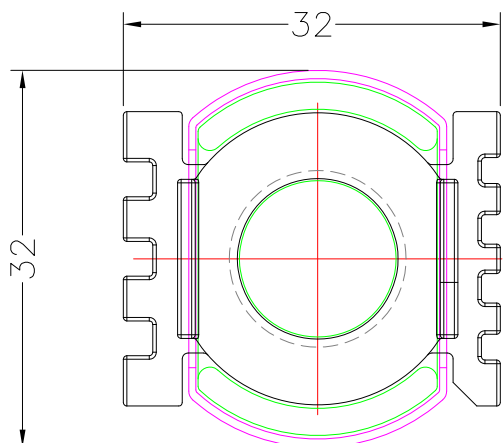
e-mail : sales@acore-ferrite.com

http:// tbi-tw.com e-mail : tb6688@ms46.hinet.net

REVISIONS

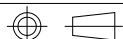
REV	SYM	DRAFTER	CHECKER	DATE
△		F.LU	G.F.YANG	05/15/17
△				
△				

TOP



BOTTOM

ITEM	PART NO.	MATERIAL	DWG NO.	Core Set Parameters
CORE	CC30-19	JPP-44A		$A_e=117\text{mm}^2$ $L_e=46.2\text{mm}$ $C_1=0.39\text{mm}^{-1}$ $V_e=5405.4\text{mm}^3$
CORE	CC30-19	JPP-95		
BOBBIN	TBI-239-02141.17XX		CC30-19-9P-TH-A4-17	
CASE	TBI-239-02021.91C		CC30-16.6-9P-CASE-B-91	



UNIT : m / m

SCALE 1 : 1

REV 1