

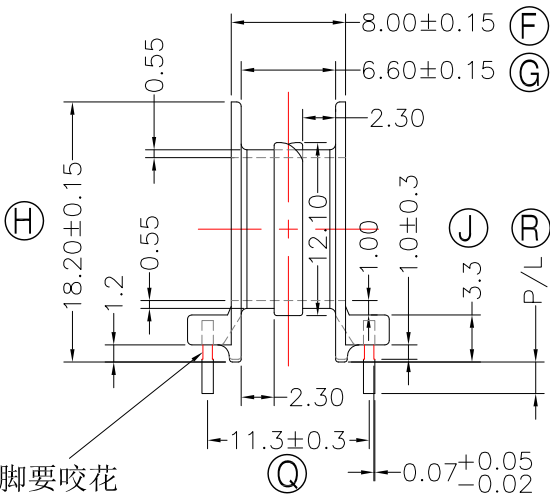
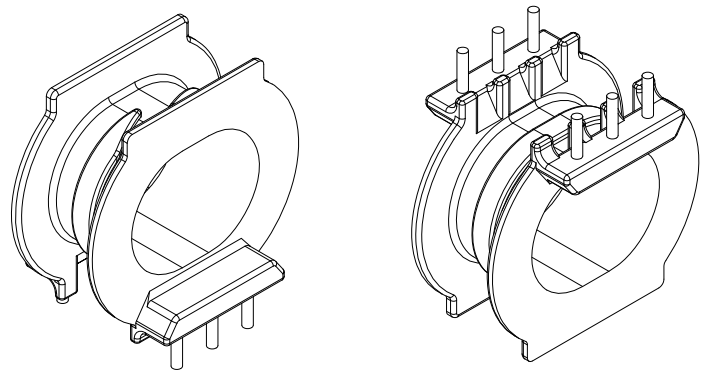
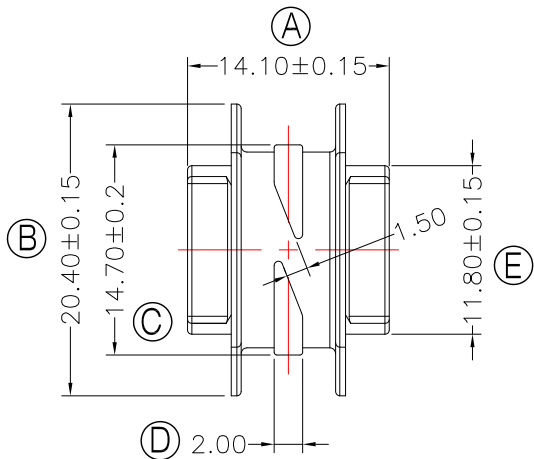


TRANSFORMER BOBBIN
INDUSTRIAL CO.,LTD.

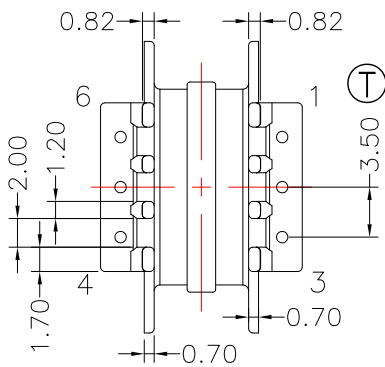
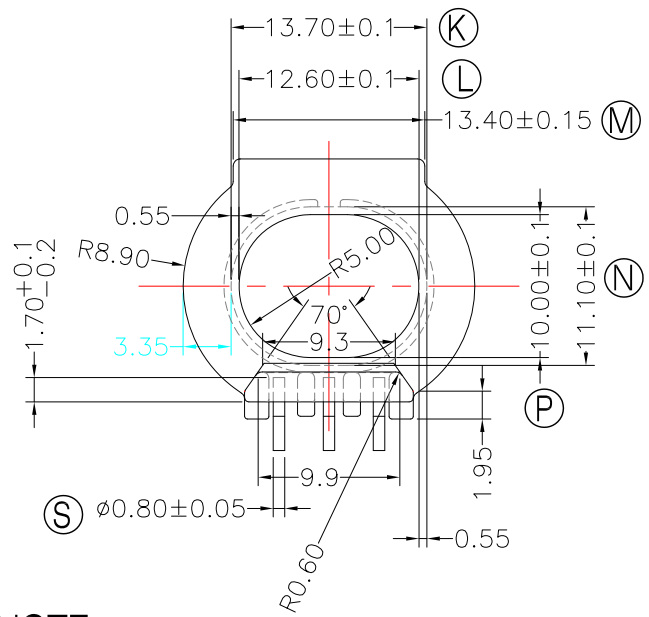
Tel : 86-769-88789999 Fax : 86-769-88789989
http:// tbi-tw.com e-mail : tb6688@ms46.hinet.net

REVISIONS

REV	SYM	DRAFTER	CHECKER	DATE
1		X.H.GU	G.F.YANG	03/03/18
2				
3				



針腳要咬花
外露



NOTE:

- 1.任一點的強度為1.5kgMIN.
- 2.PIN拉力須焊前1.0KgMIN焊后1.5KgMIN.
- 3.切斷面焊錫必須能帶出錫尖.
- 4.耐壓4.0Kv /1.5mA 60S;
- 5.焊錫溫度:450°±10° 3SEC
- 6.PIN咬花外露處不可有露銅現象;
- 7.Winding Space=6.6*3.35=22.11mm ^2

DWG NO. ATQ23.7-14.6-6P-TH-B0-17

PART NO.	MATERIAL (BOBBIN)	MATERIAL (TERMINAL)	TERMINAL (PLATING)	PIN ALLOCATION	NOTE
TBI-238-10201.1706	PM-9823	CP WIRE	Sn	ALL PIN PL=5.0±0.2	S
TBI-238-10201.1716	PM-9823	CP WIRE	Sn	CUT PIN#5 PL=5.0±0.2	H
TBI-238-10201.1726	PM-9823	CP WIRE	Sn	CUT PIN#5 PL=3.2±0.3	

TOLERANCE: 0<L<=4: ±0.1 4<L<=16: ±0.2 16<L<=63: ±0.3 UNIT : m/m SCALE 1 : 1

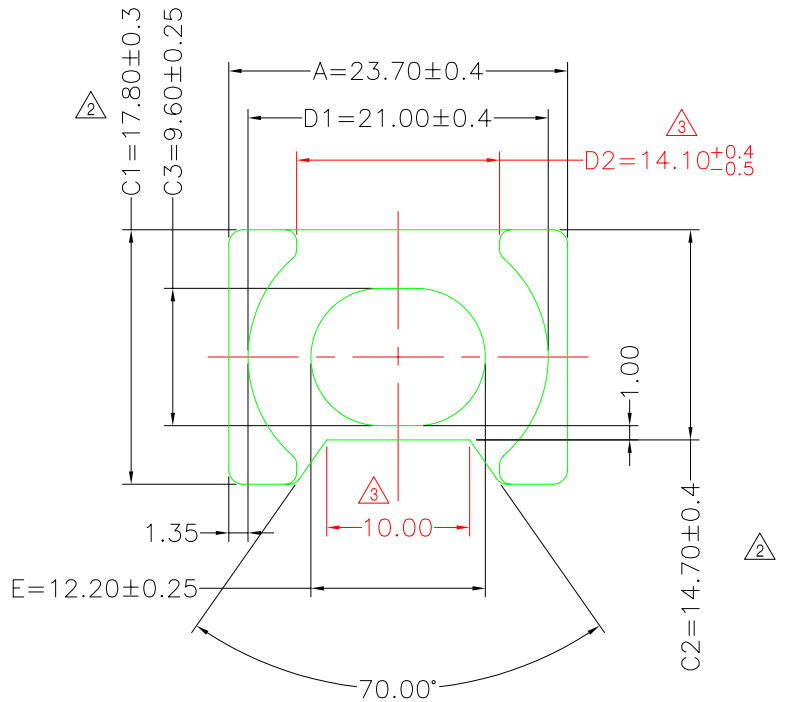
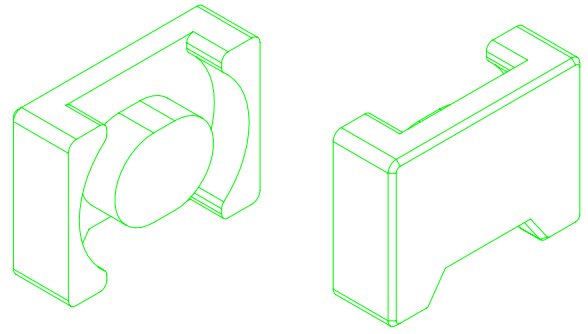
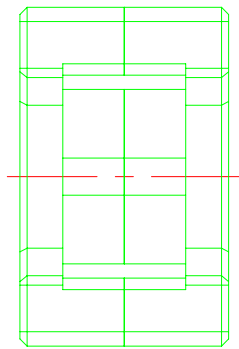
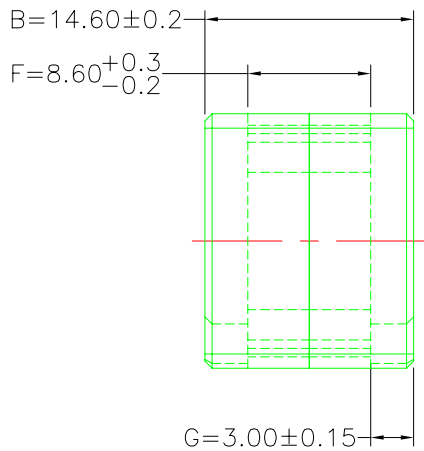
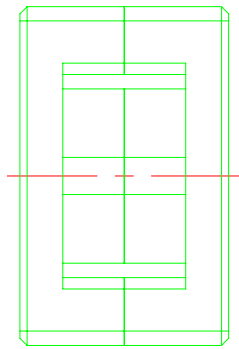
Finish: 1. PB wire Immersion Sn on terminal : Thickness:Sn plating,100,5 μ m (200 μ inches) min,Base nickel 0.625 μ m (25 μ inches) min.
2. CP wire Immersion Sn on terminal : Thickness:Sn plating,100,5 μ m (200 μ inches) min.
3. Coplanarity deviation: 0.10 mm (0.004 inches) max.

REV 1

A-CORE
ELECTRICAL CO.

A-CORE JIANGMEN ELECTRONICS CO.,LTD
江門安磁電子有限公司
Tel : 86-750-3867791 Fax : 86-750-3867787

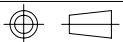
REVISIONS				
REV	SYM	DRAFTER	CHECKER	DATE
①		G.F.YANG	W.H.HSU	07/16/09
②		S.Y.TANG	G.F.YANG	08/11/09
③		X.H.GU	G.F.YANG	12/15/11



Core Set Parameters

$A_e=103\text{mm}^2$
 $L_e=38.2\text{mm}$
 $C1=0.371\text{mm}^{-1}$
 $V_e=3934.6\text{mm}^3$

DWG NO.	ATQ23.7/14.6 CORE				
PART NO.	MATERIAL (BOBBIN)	MATERIAL (TERMINAL)	TERMINAL (PLATING)	PIN ALLOCATION	NOTE
ATQ23.7/14.6	JPP-44A				
ATQ23.7/14.6	JPP-95				



UNIT : m/m

SCALE 1:1

REV 3

A-CORE

A-CORE JIANGMEN ELECTRONICS CO.,LTD
江門安磁電子有限公司

TBI

TRANSFORMER BOBBIN
INDUSTRIAL CO.,LTD.

ELECTRICAL CO. Tel : 86-750-3867791 Fax : 86-750-3867787

Tel : 86-769-88789999 Fax : 86-769-88789989

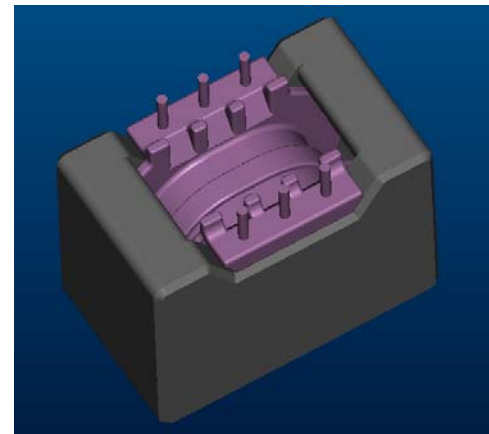
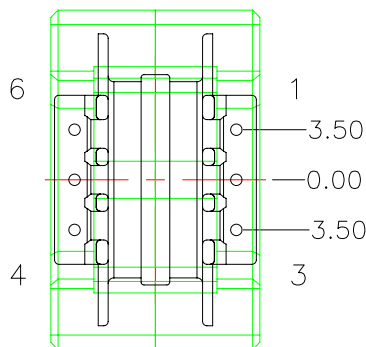
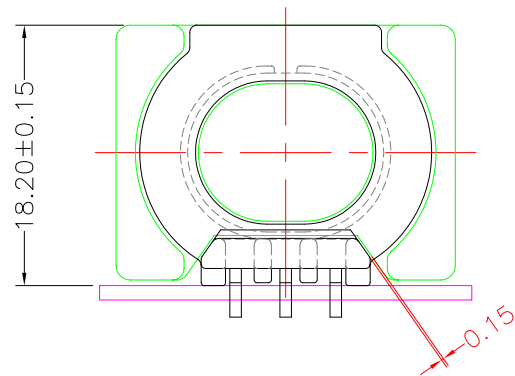
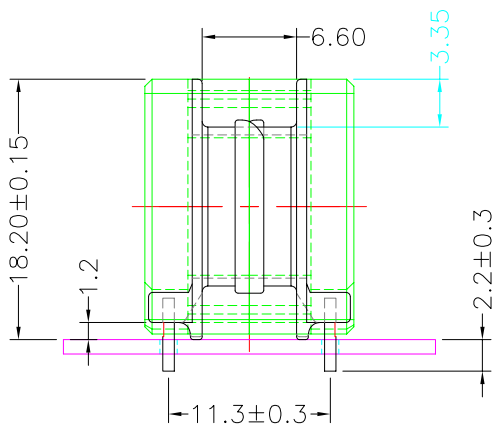
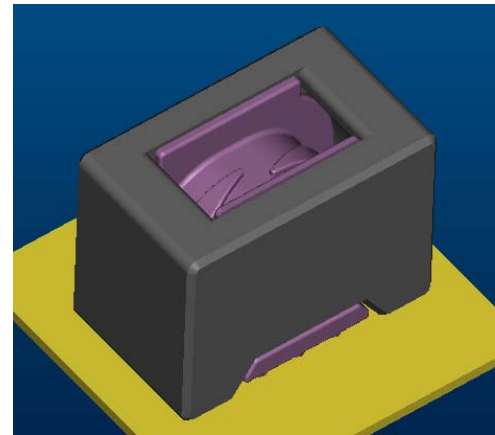
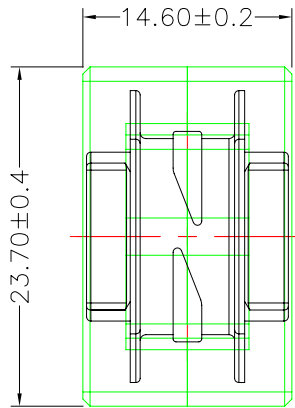
e-mail : sales@acore-ferrite.com

http:// tbi-tw.com e-mail : tb6688@ms46.hinet.net

REVISIONS

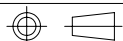
REV	SYM	DRAFTER	CHECKER	DATE
1		X.H.GU	G.F.YANG	03/03/18
2				
3				

TOP



BOTTOM

ITEM	PART NO.	MATERIAL	DWG NO.	Core Set Parameters
CORE	ATQ23.7/14.6	JPP-44A		$A_e=103\text{mm}^2$ $L_e=38.2\text{mm}$ $C_1=0.371\text{mm}^{-1}$ $V_e=3934.6\text{mm}^3$
CORE	ATQ23.7/14.6	JPP-95		
BOBBIN	TBI-238-10201.17XX		ATQ23.7-14.6-6P-TH-B0-17	



UNIT : m/m

SCALE 1 : 1

REV 1