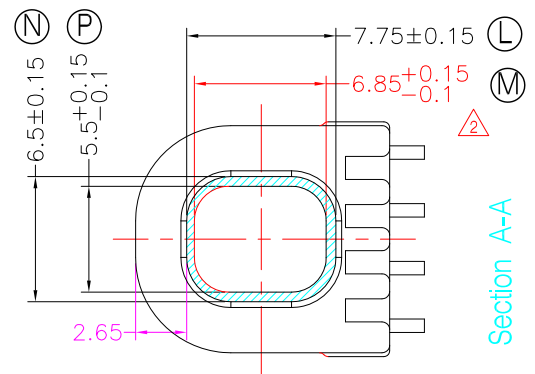
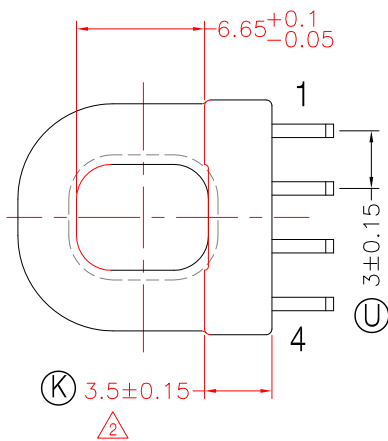
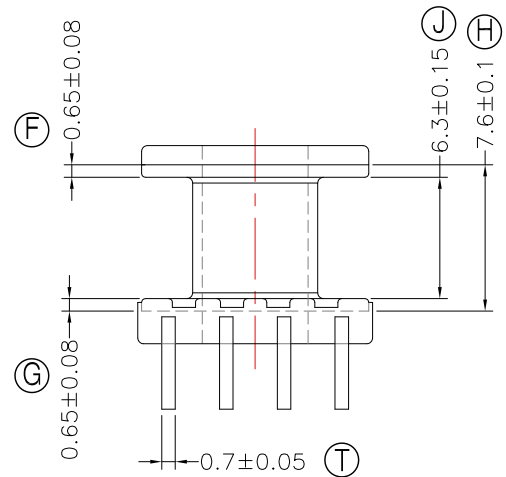
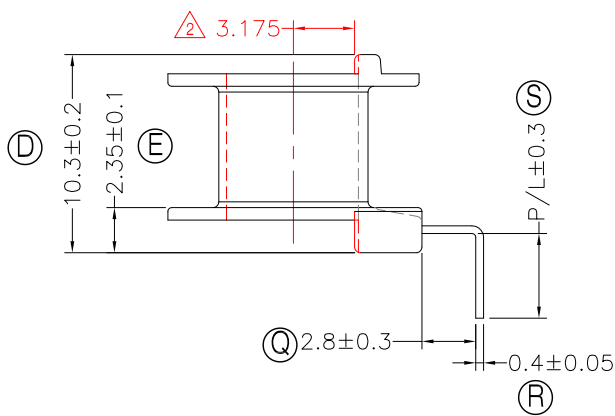
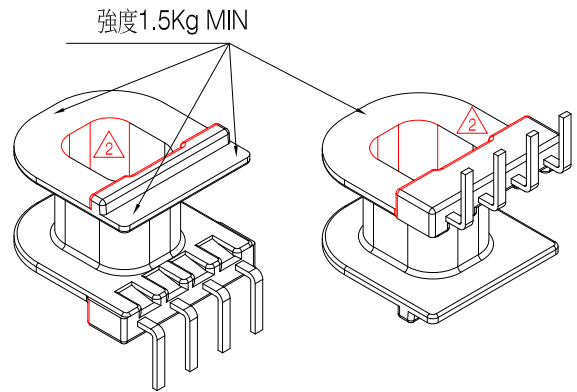
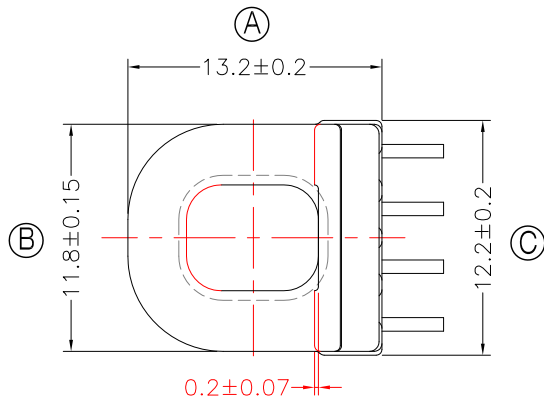




TRANSFORMER BOBBIN  
INDUSTRIAL CO.,LTD.

Tel : 86-769-88789999 Fax : 86-769-88789989  
http:// tbi-tw.com e-mail : tb6688@ms46.hinet.net

| REVISIONS |     |         |          |          |
|-----------|-----|---------|----------|----------|
| REV       | SYM | DRAFTER | CHECKER  | DATE     |
| 1         |     | X.H.GU  | G.F.YANG | 06/07/12 |
| 2         |     | F.LU    | G.F.YANG | 06/01/15 |
| 3         |     |         |          |          |



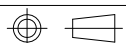
NOTE:

- 耐壓4.0Kv /1.5mA 60S;
- 焊錫溫度:450°±10° 3SEC
- 焊錫前拉力:1.0KG MIN,焊錫後拉力:1.5KG MIN;
- 任意一點強度須2.0kg MIN;(除以下測試點.A.處為1.5kg min).
- WINDING SPACE:6.3mm\*2.65mm=16.7 mm<sup>2</sup>

Section A-A

DWG NO. ATP15-11-4P-TL-0G-11

| PART NO.           | MATERIAL (BOBBIN) | MATERIAL (TERMINAL) | TERMINAL (PLATING) | PIN ALLOCATION          | NOTE |
|--------------------|-------------------|---------------------|--------------------|-------------------------|------|
| TBI-238-27071.1106 | PM-9630           | CP WIRE             | Sn                 | ALL PIN P/L=4.4±0.3     | S    |
| TBI-238-27071.1116 | PM-9630           | CP WIRE             | Sn                 | CUT PIN#4 P/L=5.5±0.3   | H    |
| TBI-238-27071.1126 | PM-9630           | CP WIRE             | Sn                 | CUT PIN#1,3 P/L=5.5±0.3 |      |
| TBI-238-27071.1136 | PM-9630           | CP WIRE             | Sn                 | CUT PIN#3 P/L=5.5±0.3   |      |



TOLERANCE: 0<L<=4:±0.1 4<L<=16:±0.2 16<L<=63:±0.3

UNIT : m / m

SCALE 1 : 1

Finish: 1. PB wire Immersion Sn on terminal : Thickness:Sn plating,100%,5 μm (200 μ inches) min,Base nickel 0.625 μm (25 μ inches) min.  
2. CP wire Immersion Sn on terminal : Thickness:Sn plating,100%,5 μm (200 μ inches) min.  
3. Coplanarity deviation: 0.10 mm (0.004 inches) max.

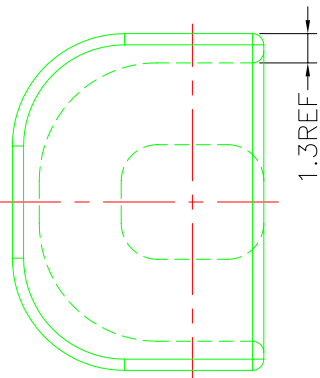
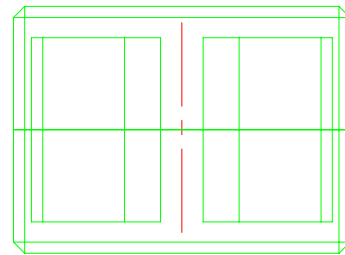
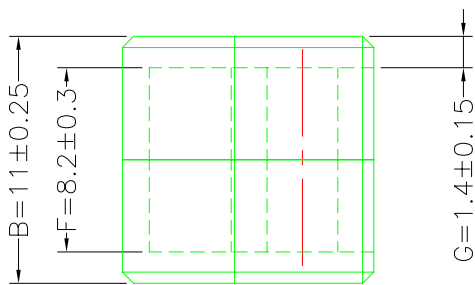
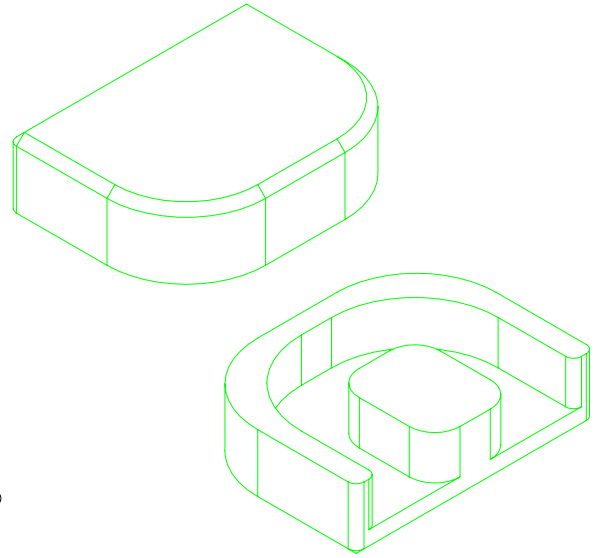
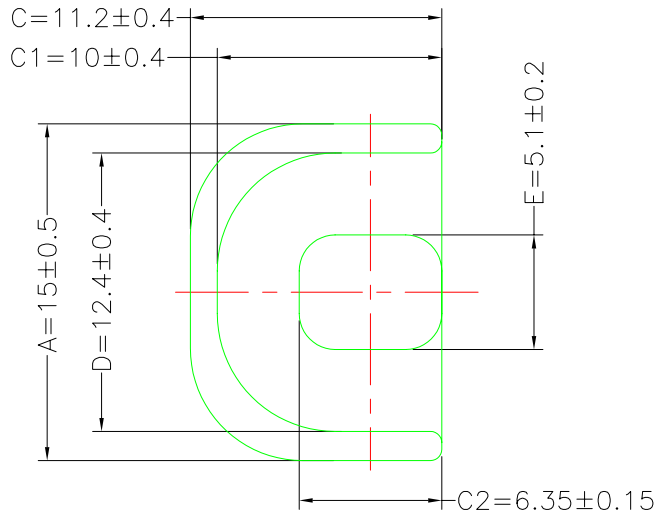
REV 2

**A-CORE**  
ELECTRICAL CO.

A-CORE JIANGMEN ELECTRONICS CO.,LTD  
 江門安磁電子有限公司  
 Tel : 86-750-3867791 Fax : 86-750-3867787

REVISIONS

| REV | SYM | DRAFTER | CHECKER  | DATE     |
|-----|-----|---------|----------|----------|
| ①   |     | X.H.GU  | G.F.YANG | 06/07/12 |
| ②   |     |         |          |          |
| ③   |     |         |          |          |

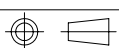


Core Set Parameters

$A_e=33.5\text{mm}^2$   
 $L_e=36.6\text{mm}$   
 $C1=1.09\text{mm}^2-1$   
 $V_e=1226.1\text{mm}^3$

DWG NO. ATP15/11 CORE

| PART NO. | MATERIAL (CORE) | MATERIAL (TERMINAL) | TERMINAL (PLATING) | PIN ALLOCATION | NOTE |
|----------|-----------------|---------------------|--------------------|----------------|------|
| ATP15/11 | JPP-44A         |                     |                    |                |      |
| ATP15/11 | JPP-95          |                     |                    |                |      |



TOLERANCE:  $0 < L \leq 4: \pm 0.1$   $4 < L \leq 16: \pm 0.2$   $16 < L \leq 63: \pm 0.3$

UNIT : m/m

SCALE 1 : 1

REV 1

**A-CORE**

A-CORE JIANGMEN ELECTRONICS CO.,LTD  
 江門安磁電子有限公司

**TBI**

TRANSFORMER BOBBIN  
 INDUSTRIAL CO.,LTD.

ELECTRICAL CO. Tel : 86-750-3867791 Fax : 86-750-3867787

Tel : 86-769-88789999 Fax : 86-769-88789989

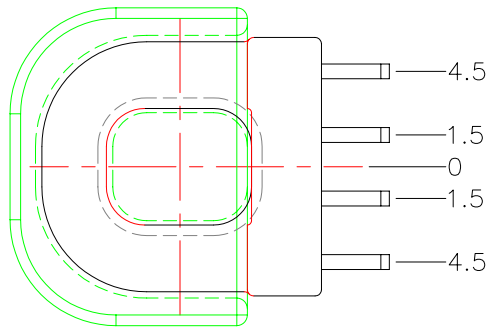
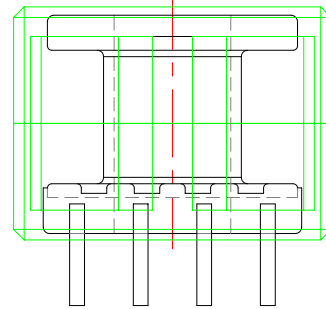
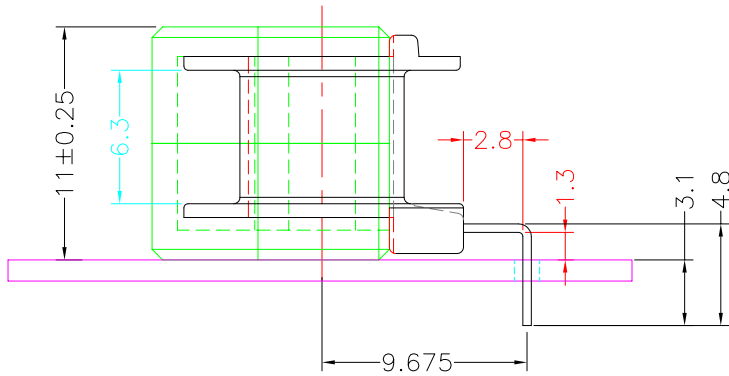
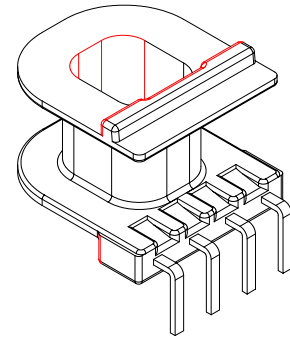
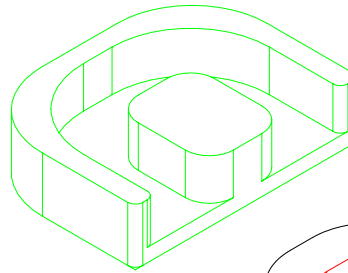
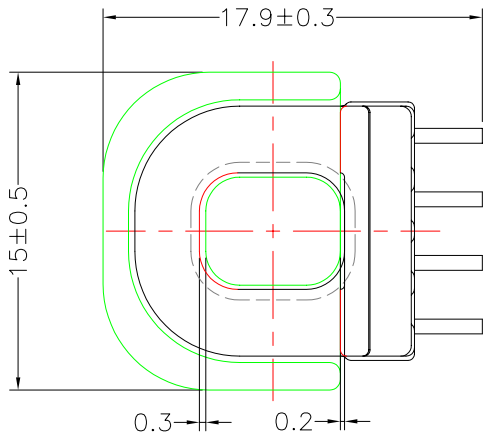
e-mail : sales@acore-ferrite.com

http:// tbi-tw.com e-mail : tb6688@ms46.hinet.net

REVISIONS

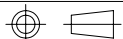
| REV | SYM | DRAFTER | CHECKER  | DATE     |
|-----|-----|---------|----------|----------|
| △1  |     | X.H.GU  | G.F.YANG | 06/07/12 |
| △2  |     | F.LU    | G.F.YANG | 06/01/15 |
| △3  |     |         |          |          |

TOP



BOTTOM

| ITEM   | PART NO.           | MATERIAL | DWG NO.              | Core Set Parameters  |
|--------|--------------------|----------|----------------------|--|
| CORE   | ATP15/11           | JPP-44A  |                      | Ae=33.5mm <sup>2</sup><br>Le=36.6mm<br>C1=1.09mm <sup>-1</sup><br>Ve=1226.1mm <sup>3</sup> |
| CORE   | ATP15/11           | JPP-95   |                      |  |
| BOBBIN | TBI-238-27071.11XX |          | ATP15-11-4P-TL-0G-11 |  |
|        |                    |          |                      |  |

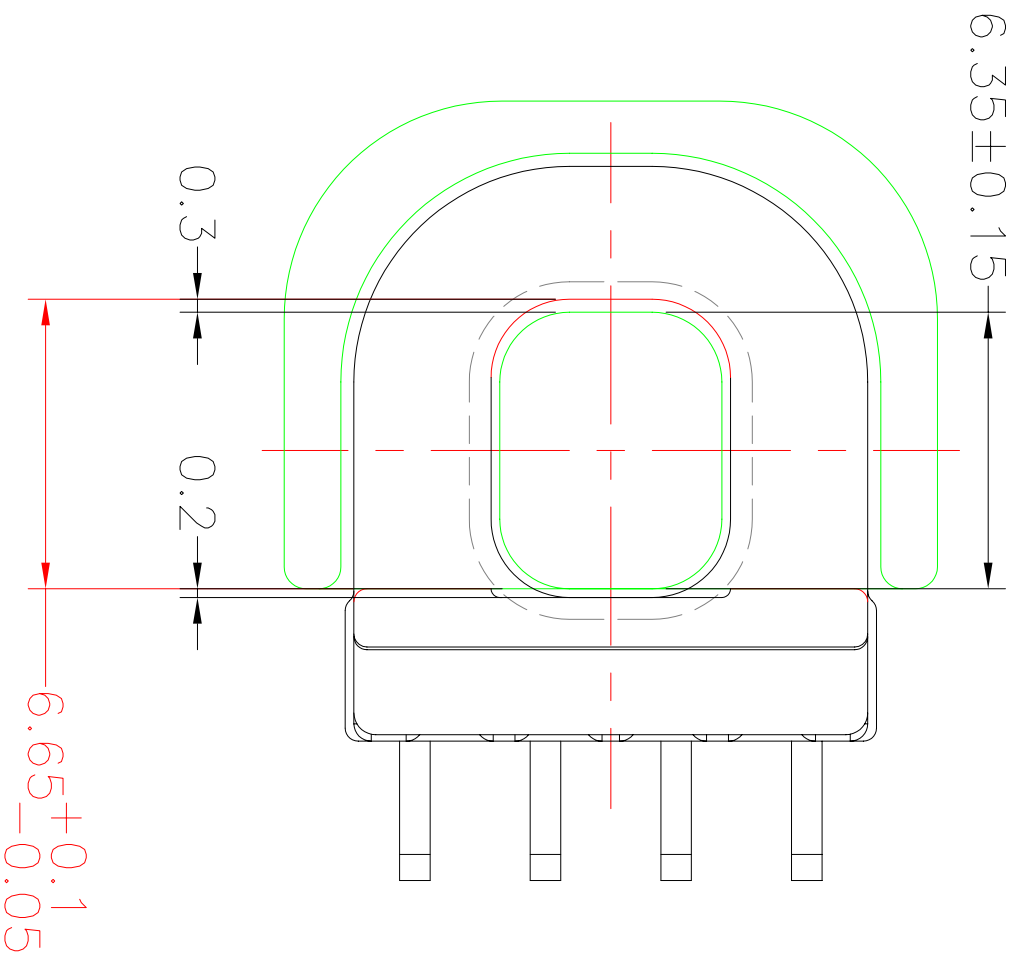


UNIT : m/m

SCALE 1 : 1

REV 2

# BOBBIN與 CORE中值



# BOBBIN下限 CORE上限

