

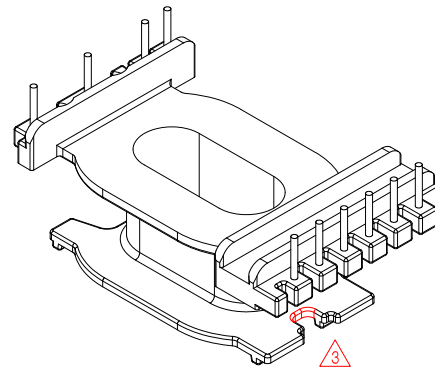
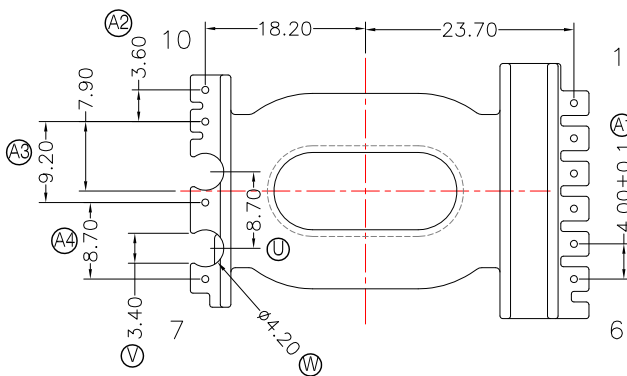
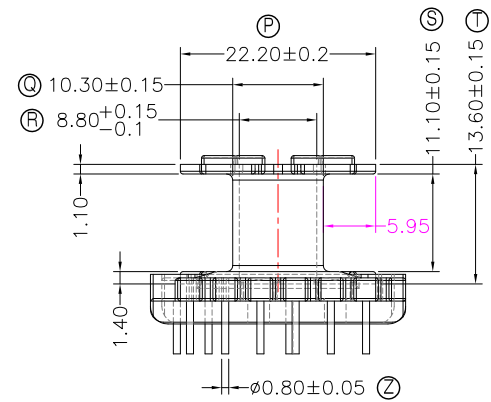
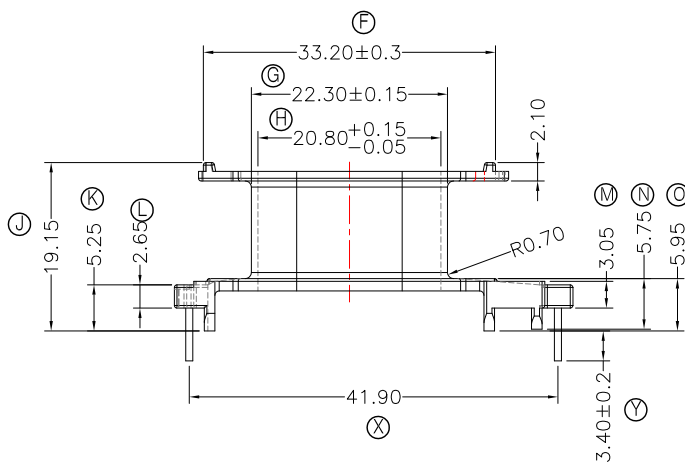
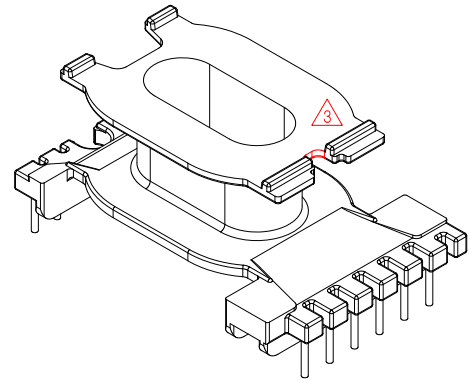
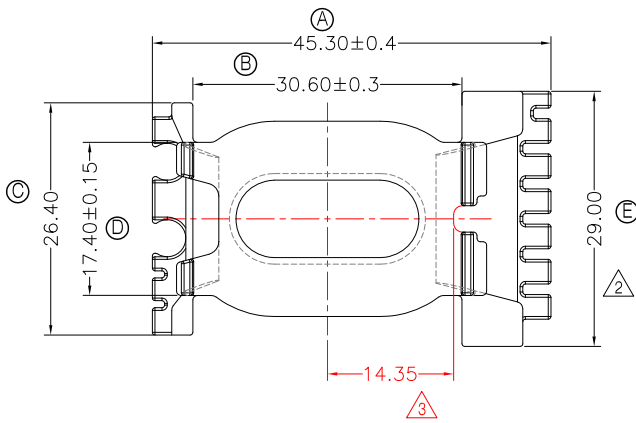


**TRANSFORMER BOBBIN
INDUSTRIAL CO.,LTD.**

Tel : 86-769-88789999 Fax : 86-769-88789989
http:// tbi-tw.com e-mail : tb6688@ms46.hinet.net

REVISIONS

REV	SYM	DRAFTER	CHECKER	DATE
1		F.LU	G.F.YANG	10/05/14
2		F.LU	G.F.YANG	11/03/14
3		F.LU	G.F.YANG	11/18/15



Winding Space=11.1*5.95=66.045mm²

DWG NO.	ATQ27-19.3A-10P-TH-J8-12				
PART NO.	MATERIAL (BOBBIN)	MATERIAL (TERMINAL)	TERMINAL (PLATING)	PIN ALLOCATION	NOTE
TBI-238-03981.1206	PM-9820	CP WIRE	Sn	ALL PIN	S
TBI-238-03981.1216	PM-9820	CP WIRE	Sn	CUT PIN#9,10	H
TBI-238-03981.1226	PM-9820	CP WIRE	Sn	CUT PIN#8,9,10	
TBI-238-03981.1236	PM-9820	CP WIRE	Sn	CUT PIN#8	
	TOLERANCE: 0<L<=4:±0.1 4<L<=16:±0.2 16<L<=50:±0.3			UNIT : m / m	SCALE 1 : 1

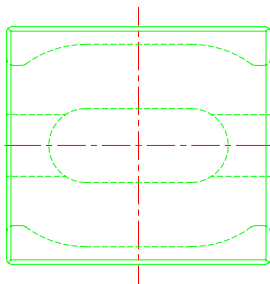
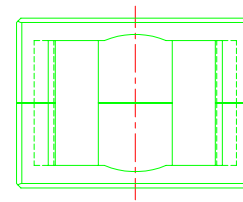
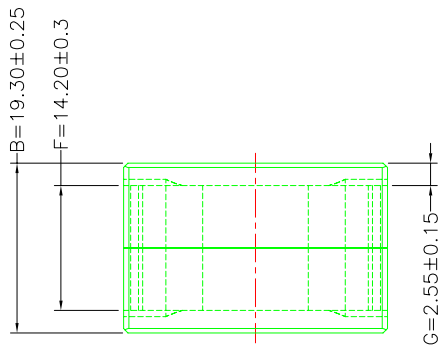
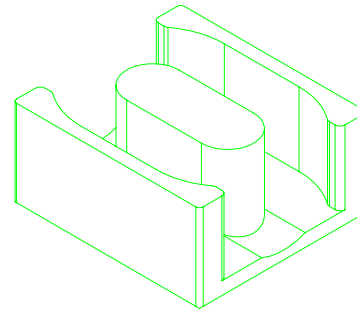
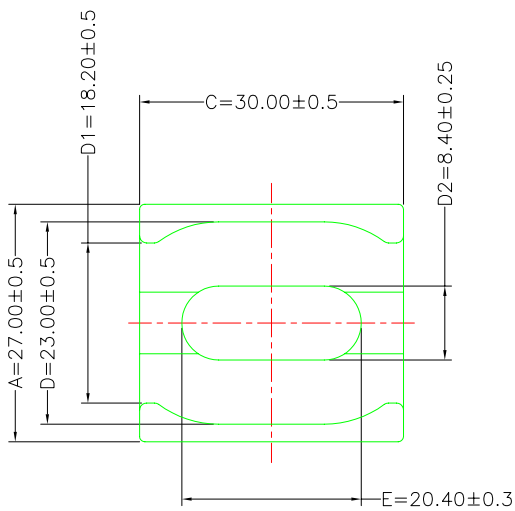
Finish: 1. PB wire Immersion Sn on terminal : Thickness:Sn plating,100%,5 μm (200 μ inches) min,Base nickel 0.625 μm (25 μ inches) min.
2. CP wire Immersion Sn on terminal : Thickness:Sn plating,100%,5 μm (200 μ inches) min.
3. Coplanarity deviation: 0.10 mm (0.004 inches) max.

REV	3
-----	---

A-CORE
ELECTRICAL CO.

A-CORE JIANGMEN ELECTRONICS CO.,LTD
江门安磁电子有限公司
Tel : 86-750-3867791 Fax : 86-750-3867787

REVISIONS				
REV	SYM	DRAFTER	CHECKER	DATE
①		F.LU	G.F.YANG	09/17/14
②				
③				



Core Set Parameters

$A_e=?mm^2$
 $L_e=?mm$
 $C_1=?mm^{-1}$
 $V_e=?mm^3$

DWG NO.	ATQ27/19.3A-CORE				
PART NO.	MATERIAL (BOBBIN)	MATERIAL (TERMINAL)	TERMINAL (PLATING)	PIN ALLOCATION	NOTE
ATQ27/19.3A	JPP-44A				
ATQ27/19.3A	JPP-95				

Finish:	TOLERANCE: 0<L<=4:±0.1 4<L<=16:±0.2 16<L<=50:±0.3	UNIT : m/m	SCALE 1 : 1	
			REV	1

A-CORE

A-CORE JIANGMEN ELECTRONICS CO.,LTD
 江門安磁電子有限公司

TBI

TRANSFORMER BOBBIN
 INDUSTRIAL CO.,LTD.

ELECTRICAL CO. Tel : 86-750-3867791 Fax : 86-750-3867787

Tel : 86-769-88789999 Fax : 86-769-88789989

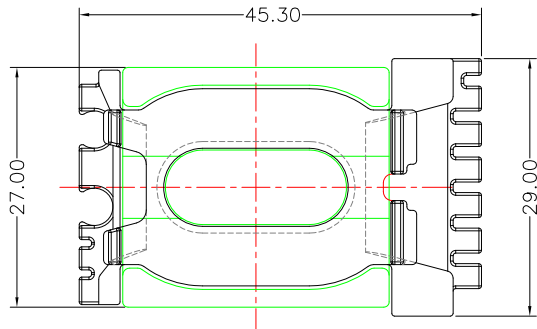
e-mail : sales@acore-ferrite.com

http:// tbi-tw.com e-mail : tb6688@ms46.hinet.net

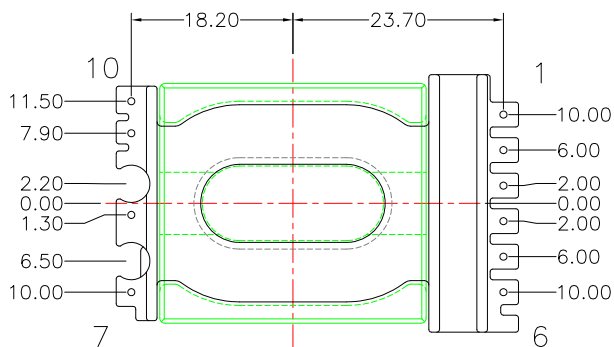
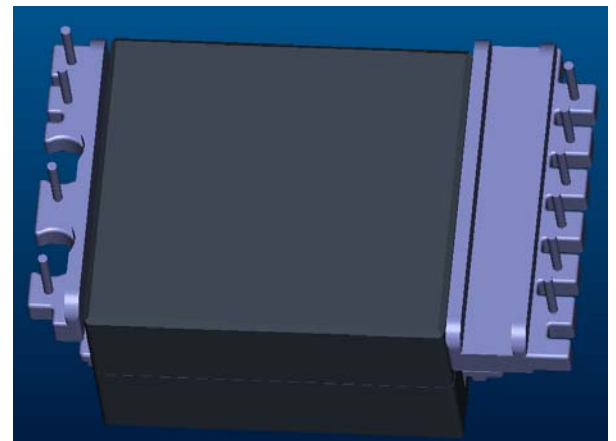
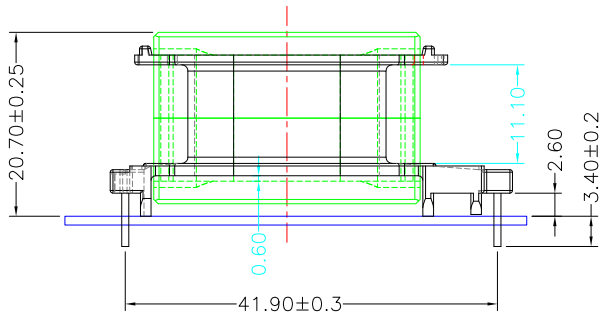
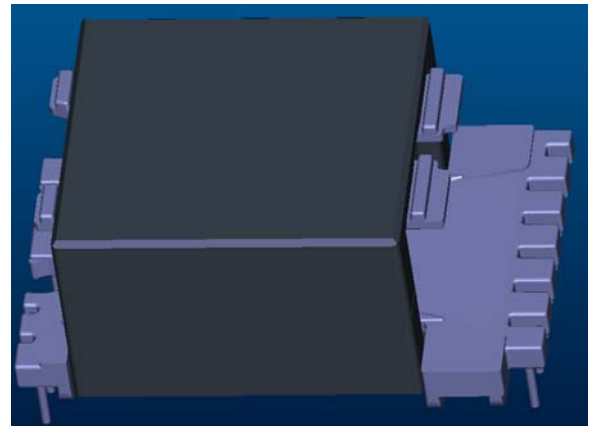
REVISIONS

REV	SYM	DRAFTER	CHECKER	DATE
△1		F.LU	G.F.YANG	10/05/14
△2		F.LU	G.F.YANG	11/03/14
△3		F.LU	G.F.YANG	11/18/15

TOP



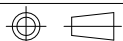
TOP



BOTTOM

BOTTOM

ITEM	PART NO.	MATERIAL	DWG NO.	Core Set Parameters
CORE	ATQ27/19.3A	JPP-44A		$A_e=?mm^2$ $L_e=?mm$ $C_1=?mm^{-1}$ $V_e=?mm^3$
CORE	ATQ27/19.3A	JPP-95		
BOBBIN	TBI-238-03981.1206		ATQ27-19.3A-10P-TH-J8-12	



UNIT : m / m

SCALE 1 : 1

REV

3