

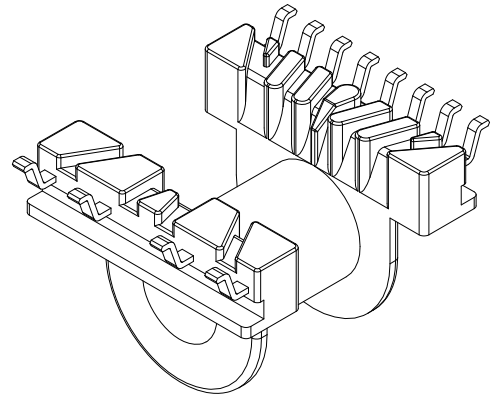
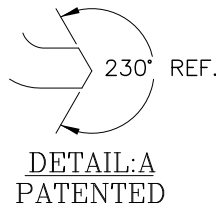
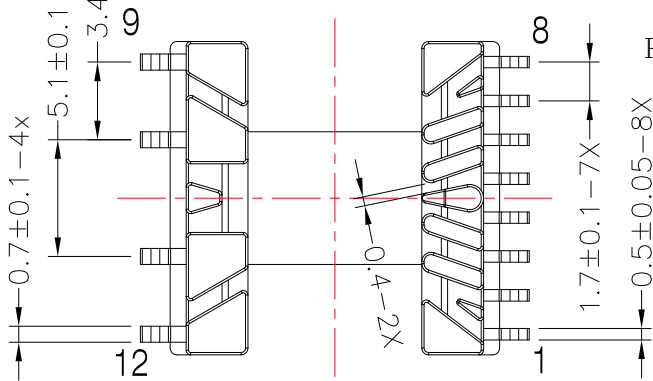
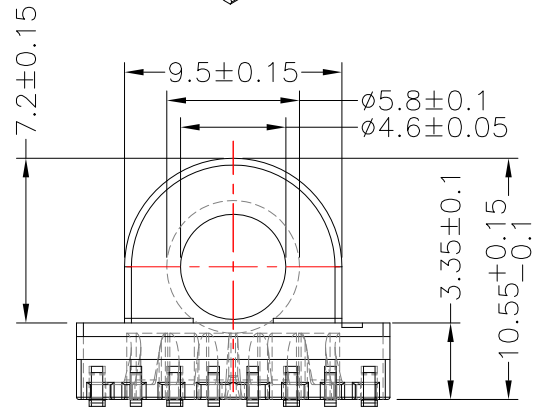
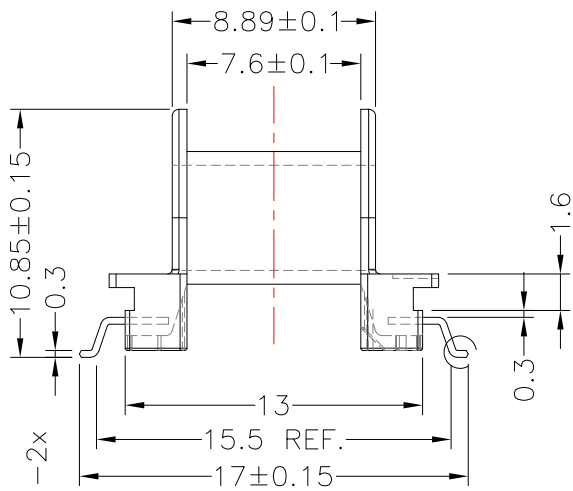
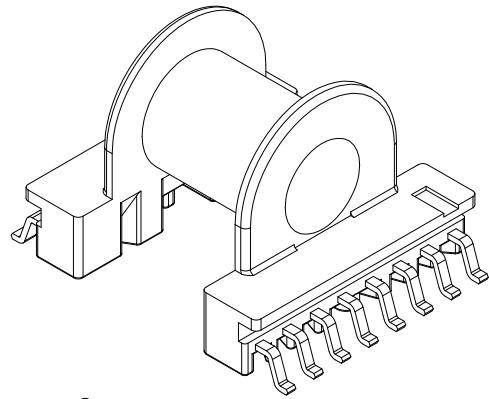
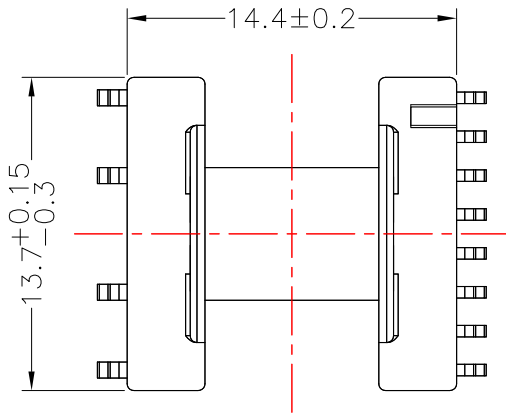


**TRANSFORMER BOBBIN
INDUSTRIAL CO.,LTD.**

Tel : 86-769-88789999 Fax : 86-769-88789989
http:// tbi-tw.com e-mail : tb6688@ms46.hinet.net

REVISIONS

REV	SYM	DRAFTER	CHECKER	DATE
1		M.FANG	G.F.YANG	12/10/13
2				
3				



NOTE: Pin 拉力0.8 Kg Min;

DWG NO. EP13-12P-GW-1.7-6E-11

PART NO.	MATERIAL (BOBBIN)	MATERIAL (TERMINAL)	TERMINAL (PLATING)	PIN ALLOCATION	NOTE
TBI-103-03651.1103	PM-9630	P.B	Sn	ALL PIN	H
TBI-103-03651.1113	PM-9630	P.B	Sn	CUT PIN#4,5,6	
TBI-103-03651.1123	PM-9630	P.B	Sn	CUT PIN#4,5	PIN截面需二次電鍍
TBI-103-03651.1133	PM-9630	P.B	Sn	CUT PIN#8,9	

PART NO.	MATERIAL (BOBBIN)	MATERIAL (TERMINAL)	TERMINAL (PLATING)	PIN ALLOCATION	NOTE
TBI-103-03651.1103	PM-9630	P.B	Sn	ALL PIN	H
TBI-103-03651.1113	PM-9630	P.B	Sn	CUT PIN#4,5,6	
TBI-103-03651.1123	PM-9630	P.B	Sn	CUT PIN#4,5	PIN截面需二次電鍍
TBI-103-03651.1133	PM-9630	P.B	Sn	CUT PIN#8,9	

PART NO.	MATERIAL (BOBBIN)	MATERIAL (TERMINAL)	TERMINAL (PLATING)	PIN ALLOCATION	NOTE
TBI-103-03651.1103	PM-9630	P.B	Sn	ALL PIN	H
TBI-103-03651.1113	PM-9630	P.B	Sn	CUT PIN#4,5,6	
TBI-103-03651.1123	PM-9630	P.B	Sn	CUT PIN#4,5	PIN截面需二次電鍍
TBI-103-03651.1133	PM-9630	P.B	Sn	CUT PIN#8,9	

PART NO.	MATERIAL (BOBBIN)	MATERIAL (TERMINAL)	TERMINAL (PLATING)	PIN ALLOCATION	NOTE
TBI-103-03651.1103	PM-9630	P.B	Sn	ALL PIN	H
TBI-103-03651.1113	PM-9630	P.B	Sn	CUT PIN#4,5,6	
TBI-103-03651.1123	PM-9630	P.B	Sn	CUT PIN#4,5	PIN截面需二次電鍍
TBI-103-03651.1133	PM-9630	P.B	Sn	CUT PIN#8,9	

PART NO.	MATERIAL (BOBBIN)	MATERIAL (TERMINAL)	TERMINAL (PLATING)	PIN ALLOCATION	NOTE
TBI-103-03651.1103	PM-9630	P.B	Sn	ALL PIN	H
TBI-103-03651.1113	PM-9630	P.B	Sn	CUT PIN#4,5,6	
TBI-103-03651.1123	PM-9630	P.B	Sn	CUT PIN#4,5	PIN截面需二次電鍍
TBI-103-03651.1133	PM-9630	P.B	Sn	CUT PIN#8,9	

PART NO.	MATERIAL (BOBBIN)	MATERIAL (TERMINAL)	TERMINAL (PLATING)	PIN ALLOCATION	NOTE
TBI-103-03651.1103	PM-9630	P.B	Sn	ALL PIN	H
TBI-103-03651.1113	PM-9630	P.B	Sn	CUT PIN#4,5,6	
TBI-103-03651.1123	PM-9630	P.B	Sn	CUT PIN#4,5	PIN截面需二次電鍍
TBI-103-03651.1133	PM-9630	P.B	Sn	CUT PIN#8,9	

PART NO.	MATERIAL (BOBBIN)	MATERIAL (TERMINAL)	TERMINAL (PLATING)	PIN ALLOCATION	NOTE
TBI-103-03651.1103	PM-9630	P.B	Sn	ALL PIN	H
TBI-103-03651.1113	PM-9630	P.B	Sn	CUT PIN#4,5,6	
TBI-103-03651.1123	PM-9630	P.B	Sn	CUT PIN#4,5	PIN截面需二次電鍍
TBI-103-03651.1133	PM-9630	P.B	Sn	CUT PIN#8,9	

PART NO.	MATERIAL (BOBBIN)	MATERIAL (TERMINAL)	TERMINAL (PLATING)	PIN ALLOCATION	NOTE
TBI-103-03651.1103	PM-9630	P.B	Sn	ALL PIN	H
TBI-103-03651.1113	PM-9630	P.B	Sn	CUT PIN#4,5,6	
TBI-103-03651.1123	PM-9630	P.B	Sn	CUT PIN#4,5	PIN截面需二次電鍍
TBI-103-03651.1133	PM-9630	P.B	Sn	CUT PIN#8,9	

PART NO.	MATERIAL (BOBBIN)	MATERIAL (TERMINAL)	TERMINAL (PLATING)	PIN ALLOCATION	NOTE
TBI-103-03651.1103	PM-9630	P.B	Sn	ALL PIN	H
TBI-103-03651.1113	PM-9630	P.B	Sn	CUT PIN#4,5,6	
TBI-103-03651.1123	PM-9630	P.B	Sn	CUT PIN#4,5	PIN截面需二次電鍍
TBI-103-03651.1133	PM-9630	P.B	Sn	CUT PIN#8,9	

PART NO.	MATERIAL (BOBBIN)	MATERIAL (TERMINAL)	TERMINAL (PLATING)	PIN ALLOCATION	NOTE
TBI-103-03651.1103	PM-9630	P.B	Sn	ALL PIN	H
TBI-103-03651.1113	PM-9630	P.B	Sn	CUT PIN#4,5,6	
TBI-103-03651.1123	PM-9630	P.B	Sn	CUT PIN#4,5	PIN截面需二次電鍍
TBI-103-03651.1133	PM-9630	P.B	Sn	CUT PIN#8,9	

PART NO.	MATERIAL (BOBBIN)	MATERIAL (TERMINAL)	TERMINAL (PLATING)	PIN ALLOCATION	NOTE
TBI-103-03651.1103	PM-9630	P.B	Sn	ALL PIN	H
TBI-103-03651.1113	PM-9630	P.B	Sn	CUT PIN#4,5,6	
TBI-103-03651.1123	PM-9630	P.B	Sn	CUT PIN#4,5	PIN截面需二次電鍍
TBI-103-03651.1133	PM-9630	P.B	Sn	CUT PIN#8,9	

Finish: 1. Pb wire Immersion Sn on terminal : Thickness:Sn plating,100%,5 μm (200 μ inches) min,Base nickel 0.625 μm (25 μ inches) min.
2. CP wire Immersion Sn on terminal : Thickness:Sn plating,100%,5 μm (200 μ inches) min.
3. Coplanarity deviation: 0.10 mm (0.004 inches) max.

REV 1