

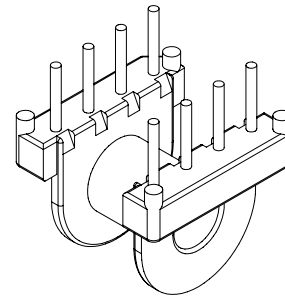
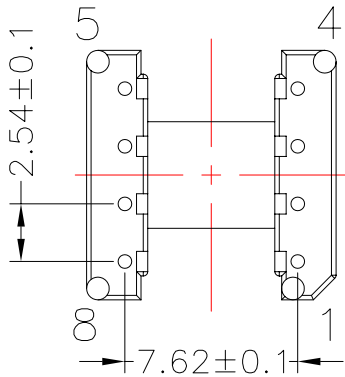
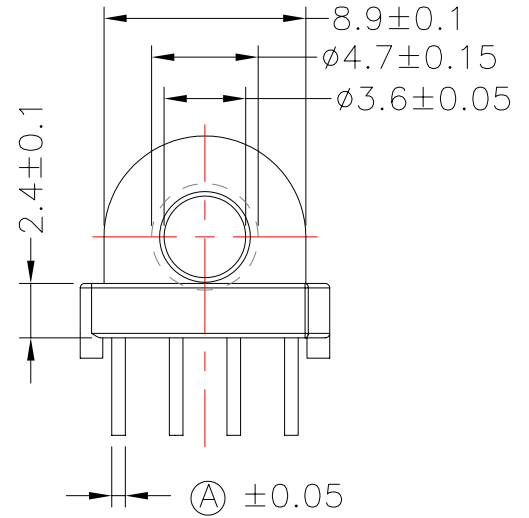
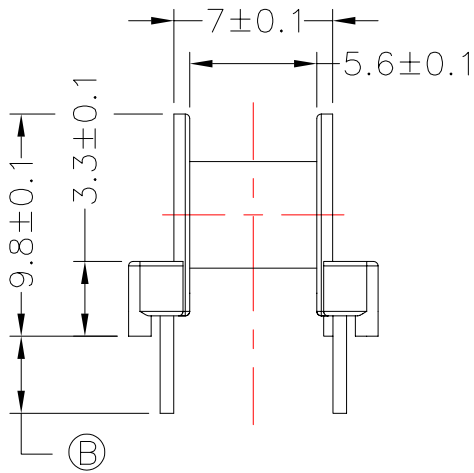
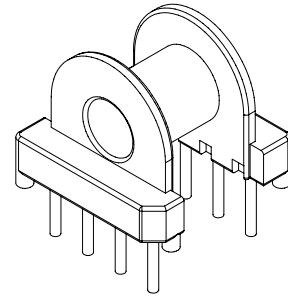
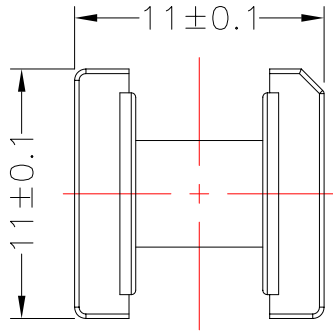


**TRANSFORMER BOBBIN INDUSTRIAL CO.,LTD.**

Tel : 86-769-88789999 Fax : 86-769-88789989  
 http:// tbi-tw.com e-mail : tb6688@ms46.hinet.net

REVISIONS

REV	SYM	DRAFTER	CHECKER	DATE
9		T.S.LII	W.H.HSU	06/24/03
10		T.S.LII	W.H.HSU	06/28/03
11		T.S.LII	W.H.HSU	07/21/06



DWG NO.	EP10-8P-TH-2.54-A-1				
PART NO.	MATERIAL (BOBBIN)	MATERIAL (TERMINAL)	TERMINAL (PLATING)	PIN ALLOCATION	NOTE
TBI-203-02011.106	PM-9630	C.P WIRE	Sn	All Pin (A)= ø0.6 , (B)=3.4±0.3	H
TBI-203-02011.116	PM-9630	C.P WIRE	Sn	All Pin (A)=SQ0.5 ,(B)=3.4±0.3	
TBI-203-02011.126	PM-9630	C.P WIRE	Sn	All Pin (A)= ø0.6 , (B)=3.8±0.3	
TBI-203-02011.136	PM-9630	C.P WIRE	Sn	CUT PIN #2,3,6,7 (A)=ø0.6 ,(B)=3.4±0.3	
TBI-203-02011.146	PM-9630	C.P WIRE	Sn	All Pin (A)= ø0.6 ,(B)=3.3±0.25	
	TOLERANCE: .X±0.15 .XX±0.10 .XXX±0.05			UNIT : m / m	SCALE 3 : 1
Finish:	1. PB wire Immersion Sn on terminal : Thickness:Sn plating,100,5 μ m (200 μ inches) min,Base nickel 0.625 μ m (25 μ inches) min. 2. CP wire Immersion Sn on terminal : Thickness:Sn plating,100,5 μ m (200 μ inches) min. 3. Coplanarity deviation: 0.10 mm (0.004 inches) max.				REV 11