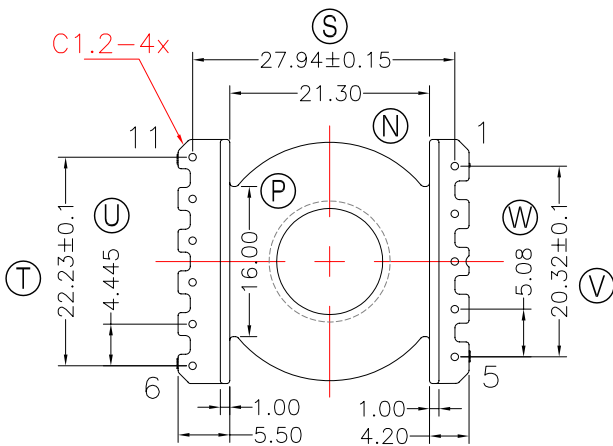
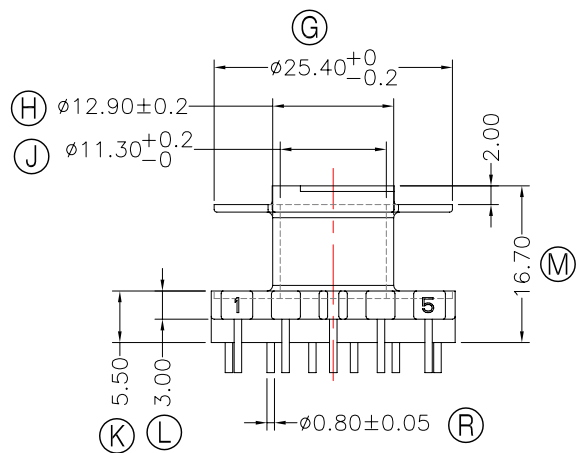
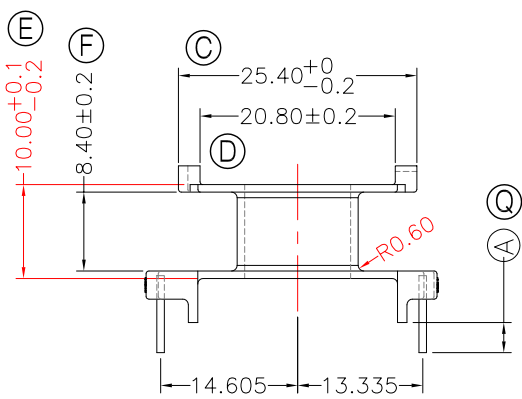
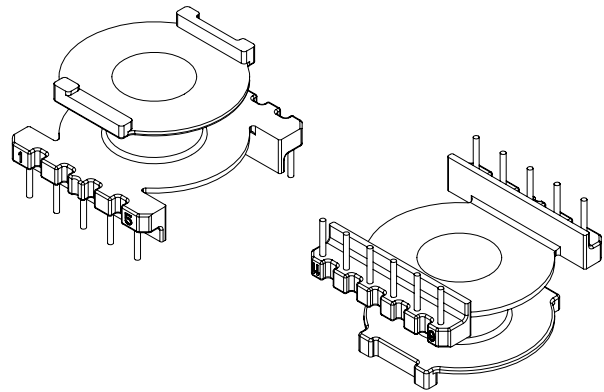
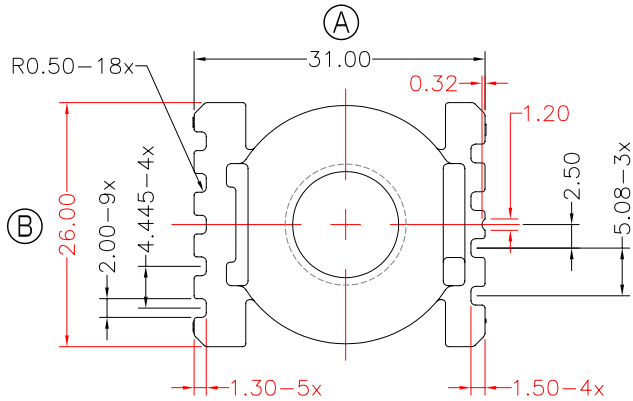




TRANSFORMER BOBBIN INDUSTRIAL CO.,LTD.

Tel : 86-769-88789999 Fax : 86-769-88789989
 http:// tbi-tw.com e-mail : tb6688@ms46.hinet.net

REVISIONS				
REV	SYM	DRAFTER	CHECKER	DATE
①		X.H.GU	G.F.YANG	03/21/12
②				
③				



NOTES:

- The final product must be delivered: clean and without defects.
- Coil former material : Phenolic PM-9750 or PM-9630, UL94 V0, operating temperature : 130 °C, IEC 60085 class H
- Cavities must be identified if there is more than one in the mold
- PINS will be post moulded, for PIN details use CP Steel Wire. PIN pullout force: 1Kg
- Draft to be 0.5° max and degrease mass unless otherwise noted
- Attention: the item must meet the EU RoHS 2002 /95 /EC requirements (Restriction of hazardous substances directive)
- Noted surface to be free of flash, gate, ejector pin marks and shrinkage cavity. Could you accept the burr with 0.1 mm max
- Gate removal must be within print tolerances or recessed 0.5 mm max.
- Dimensions without indication of tolerance: Tolerances UNI ISO 2768-m.

DWG NO.	EQ30-16-11P-TH-G-11				
PART NO.	MATERIAL (BOBBIN)	MATERIAL (TERMINAL)	TERMINAL (PLATING)	PIN ALLOCATION	NOTE
TBI-235-04071.1106	PM-9630	CP WIRE	Sn	ALL PIN ①=3.2±0.2	
TBI-235-04071.1116	PM-9630	CP WIRE	Sn	ALL PIN ①=5.0±0.5	H.C
TBI-235-04071.1126	PM-9630	CP WIRE	Sn	CUT PIN#8,11 ①=5.0±0.5	
TBI-235-04071.1136	PM-9630	CP WIRE	Sn	CUT PIN#8,11 ①=2.8±0.2	
TBI-235-04071.1146	PM-9630	CP WIRE	Sn	CUT PIN#1,3,4,6,8,9,11 ①=2.8±0.3	
TBI-235-04071.1156	PM-9630	CP WIRE	Sn	CUT PIN#1,3,4,6,8,9,11 ①=5.0±0.5	F
TBI-235-04071.1166	PM-9630	CP WIRE	Sn	ALL PIN ①=2.8±0.2	

	TOLERANCE: 0.5-6: ±0.1 6-30: ±0.2 30-120: ±0.3	UNIT : m / m	SCALE 1 : 1
Finish: 1. PB wire Immersion Sn on terminal : Thickness: Sn plating, 100,5 μm (200 μ inches) min, Base nickel 0.625 μm (25 μ inches) min. 2. CP wire Immersion Sn on terminal : Thickness: Sn plating, 100,5 μm (200 μ inches) min. 3. Coplanarity deviation: 0.10 mm (0.004 inches) max.	REV	1	