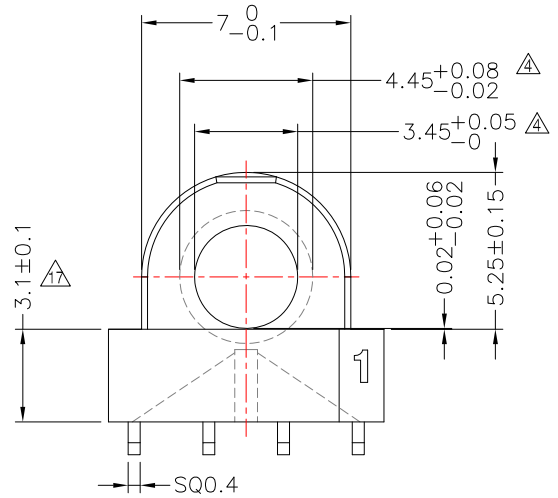
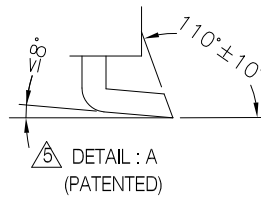
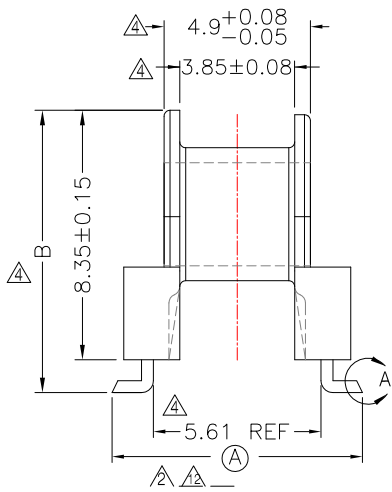
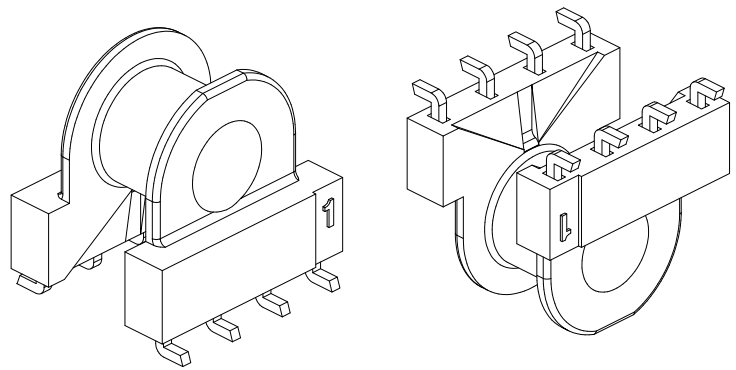
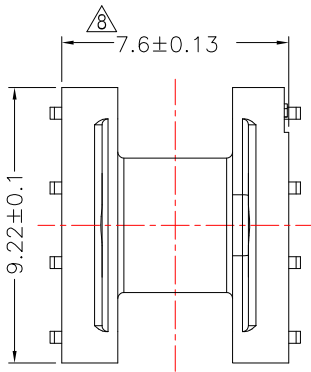




TRANSFORMER BOBBIN INDUSTRIAL CO.,LTD.

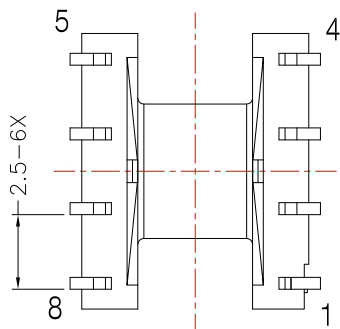
Tel : 86-769-88789999 Fax : 86-769-88789989
 http:// tbi-tw.com e-mail : tb6688@ms46.hinet.net

REVISIONS				
REV	SYM	DRAFTER	CHECKER	DATE
△1		T.S.LII	W.H.HSU	07/20/06
△2		T.S.LII	W.H.HSU	07/24/06
△3		S.Y.TANG	S.M.SHIH	10/31/06

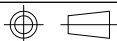


NOTE:

- 針對103-08161.143料號時, 要求Pin1, 4不插
 因產品無防呆機構, 以塑膠Pin1標示數Pin時,
 生產出的產品Pin1, 4不插或者Pin5, 8不插都是OK可接受;
- 針對103-08161.153料號時, 要求Pin6, 7不插
 因產品無防呆機構, 以塑膠Pin1標示數Pin時,
 生產出的產品Pin6, 7不插或者Pin2, 3不插都是OK可接受;
- 針對103-08161.163料號時, 要求Pin1不插
 因產品無防呆機構, 以塑膠Pin1標示數Pin時,
 生產出的產品Pin1不插或者Pin5不插都是OK可接受;



DWG NO.	EP7-8P-L-2.5V-A6-1					
PART NO.	MATERIAL (BOBBIN)	MATERIAL (TERMINAL)	TERMINAL (PLATING)	PIN ALLOCATION	NOTE	
△14 TBI-103-08161.103	PM-9630	P.B	Sn	ALL PIN (A)=8.65±0.15 (B)=9.45 ⁺⁰ / _{-0.25}		H
△14 TBI-103-08161.113	PM-9630	P.B	Sn	ALL PIN (A)=8.15±0.15 (B)=9.45 ⁺⁰ / _{-0.25}		
△14 TBI-103-08161.123	PM-9630	P.B	Sn	ALL PIN (A)=8.15 ^{+0.15} / _{-0.05} (B)=9.45 ⁺⁰ / _{-0.25}		
TBI-103-08161.133	PM-9630	P.B	Sn	ALL PIN (A)=8.65±0.15 (B)=9.45 ^{+0.15} / ₋₀		
TBI-103-08161.143	PM-9630	P.B	Sn	CUT PIN#1,4 (A)=8.65±0.15 (B)=9.45 ⁺⁰ / _{-0.25}		
TBI-103-08161.153	PM-9630	P.B	Sn	CUT PIN#6,7 (A)=8.65±0.15 (B)=9.45 ⁺⁰ / _{-0.25}		
TBI-103-08161.163	PM-9630	P.B	Sn	CUT PIN#1 (A)=8.65±0.15 (B)=9.45 ⁺⁰ / _{-0.25}		



TOLERANCE: .X±0.15 .XX±0.10 .XXX±0.05

UNIT : m/m

SCALE 4 : 1

Finish: 1. Immersion gold on terminal : Thickness gold 0.075 μm (3 μ inches) min, Base nickel 0.625 μm (25 μ inches) min.
 2. Immersion Sn on terminal : Terminal: Sn plating, 100, 5 μm (200 μ inches) min , Base nickel 0.625 μm (25 μ inches) min.
 3. Coplanarity deviation: 0.10 mm (0.004 inches) max.
 4. Pin pull strenght = 1.0 kg (min) . △3

REV 19