



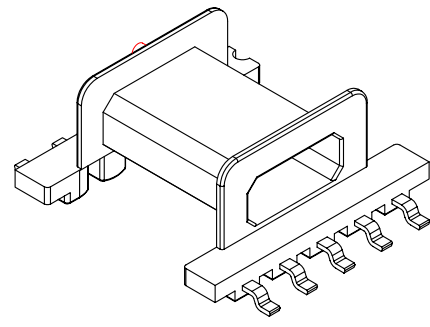
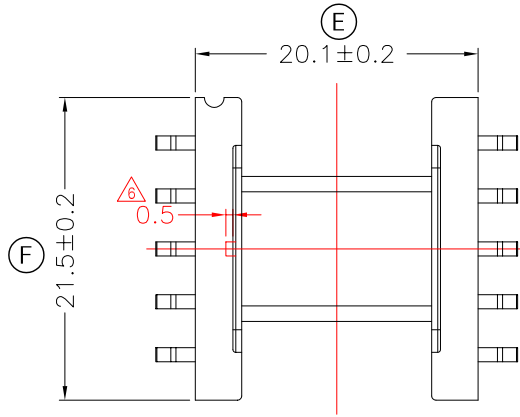
**TRANSFORMER BOBBIN
INDUSTRIAL CO.,LTD.**

Tel : 86-769-88789999 Fax : 86-769-88789989
http:// tbi-tw.com e-mail : tb6688@ms46.hinet.net

REVISIONS				
REV	SYM	DRAFTER	CHECKER	DATE
4		YAN.TANG	W.H.HSU	08/05/07
5		YAN.TANG	G.F.YANG	01/02/08
6		YAN.TANG	G.F.YANG	04/19/10

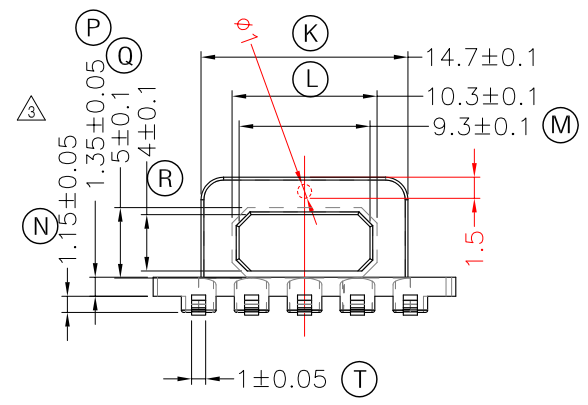
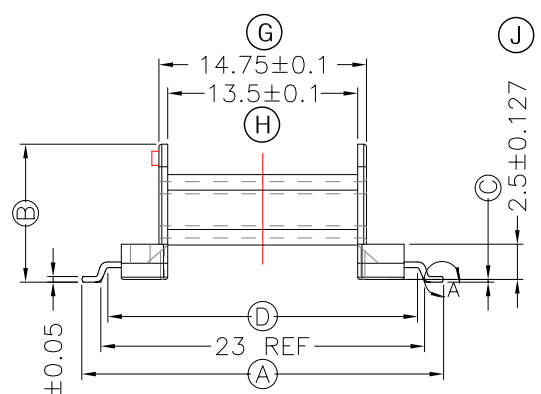
A

A



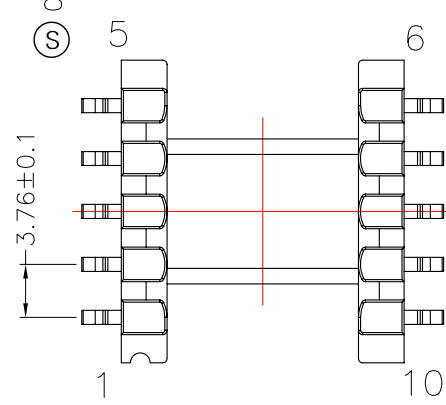
B

B

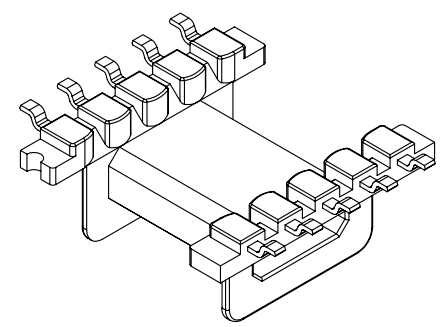


C

C



230° REF
**DETAIL:A
PATENTED**



D

D

DWG NO. EFD20-10P-GW-3.76-0G-1					S
PART NO. MATERIAL (BOBBIN) MATERIAL (TERMINAL) TERMINAL (PLATING)				PIN ALLOCATION	
TBI-107-01071.103	PM-9630	PB(C5191)	Sn	ALL PIN(A)=25.7 ± 0.15(B)=9.8±0.1 (C) =0.2±0.127 (D) =22 REF	
TBI-107-01071.113	PM-9630	PB(C5191)	Sn	ALL PIN(A)= 25.08 ± 0.2(B)=9.8±0.1 (C) =0.2±0.127 (D) =22 REF	
TBI-107-01071.123	PM-9630	PB(C5191)	Sn	ALL PIN(A)= 25.5 ± 0.2(B)=9.8±0.1 (C) =0.2±0.127 (D) =22 REF	
TBI-107-01071.133	PM-9630	PB(C5191)	Sn	ALL PIN(A)= 25.08 ± 0.2(B)=11+0/-0.3 (C) =1.4+0/-0.3 (D) =22 REF	
TBI-107-01071.143	PM-9630	PB(C5191)	Sn	ALL PIN(A)=25.7 ± 0.15(B)=9.8±0.1 (C) =0.2±0.127 (D) =22.4 REF	
TBI-107-01071.153	PM-9630	PB(C5191)	Sn	CUT PIN#3,8(A)= 25.08 ± 0.2(B)=9.8±0.1 (C) =0.2±0.127 (D) =22 REF	
TBI-107-01071.163	PM-9630	PB(C5191)	Sn	CUT PIN #6(A)=25.7 ± 0.15(B)=9.8±0.1 (C) =0.2±0.127 (D) =22 REF	
TBI-107-01071.173	PM-9630	PB(C5191)	Sn	CUT PIN #7(A)=25.7 ± 0.15(B)=9.8±0.1 (C) =0.2±0.127 (D) =22 REF	
TBI-107-01071.183	PM-9630	PB(C5191)	Sn	CUT PIN #6(A)= 25.08 ± 0.2(B)=9.8±0.1 (C) =0.2±0.127 (D) =22 REF	
TBI-107-01071.193	PM-9630	PB(C5191)	Sn	CUT PIN#6,7,8,9,10(A)= 25.08 ± 0.2(B)=11+0/-0.3(C)=1.4+0/-0.3(D)=22REF	
TBI-107-01071.1A3	PM-9630	PB(C5191)	Sn	ALL PIN (A) = 25.1±0.2 (B)=10.6±0.2 (C) =1.0±0.1 (D) =22REF	
TBI-107-01071.1B3	PM-9630	PB(C5191)	Sn	ALL PIN (A) = 25.08±0.2 (B)=10.5±0.2 (C) =0.9±0.15 (D) =22REF	
TOLERANCE: .X±0.15 .XX±0.10 .XXX±0.05				UNIT : m / m	SCALE 1 : 1

Finish: 1. PB wire Immersion Sn on terminal : Thickness:Sn plating,100,5 μm (200 μ inches) min,Base nickel 0.625 μm (25 μ inches) min.
2. CP wire Immersion Sn on terminal : Thickness:Sn plating,100,5 μm (200 μ inches) min.
3. Coplanarity deviation: 0.10 mm (0.004 inches) max.

REV	6
-----	---

E

E

F

F